

香港統計月刊

Hong Kong Monthly Digest of Statistics

二零零三年十一月
November 2003

專題文章
Feature Article

一九八二至二零零二年香港豬肉及牛肉食用回顧

A Review of Pork and Beef Consumption
in Hong Kong, 1982 - 2002

一九八二至二零零二年香港豬肉及牛肉食用回顧

A Review of Pork and Beef Consumption in Hong Kong, 1982 - 2002

豬肉及牛肉(包括新鮮、冰鮮和冷藏三類)是本港市民常吃的肉類。根據估計，二零零二年香港市民每日平均食用的豬肉及牛肉共為 128.5 克，當中 105.2 克為豬肉，23.3 克為牛肉。自一九九八年起，冰鮮和冷藏豬肉及牛肉的總食用量已超過新鮮豬肉及牛肉的總食用量。本文回顧過去二十年本港市民食用豬肉及牛肉的情況，並分析其趨勢。

Pork and beef (including fresh, chilled and frozen) are the usual diet of Hong Kong people. It was estimated that a person in Hong Kong consumed, on average, a total of 128.5 g of pork and beef per day in 2002, comprising 105.2 g of pork and 23.3 g of beef. Since 1998, the total consumption of chilled and frozen pork and beef has exceeded that of fresh pork and beef. This article reviews the local consumption of pork and beef in the past twenty years and analyses their consumption trends.

如對本文有任何查詢，請致電食物環境衛生署調查及統計小組 (電話：2923 5305)。

If you have any enquiries on this article, please call the Survey and Statistics Unit, Food and Environmental Hygiene Department (Tel. : 2923 5305).

一九八二至二零零二年香港豬肉及牛肉食用回顧

A Review of Pork and Beef Consumption in Hong Kong, 1982 - 2002

1. 引言

1.1 豬肉及牛肉(包括新鮮、冰鮮和冷藏三類)是本港市民常吃的肉類。根據估計,二零零二年香港市民每日平均食用的豬肉及牛肉共為 128.5 克,當中 105.2 克為豬肉,23.3 克為牛肉。

1.2 目前,80% 的新鮮豬肉和新鮮牛肉來自內地進口的牲畜,20% 來自本地農場。現時,活豬和活牛是由上水、荃灣及長洲三所持牌私營屠房屠宰。它們的屠宰量分別佔豬牛總屠宰量的 73.6%、25.9% 及 0.5%。這三所屠房由私人公司經營,其牌照則由食物環境衛生署簽發。二零零二年屠宰豬隻和牛隻的數目,分別佔總屠宰豬牛量的 98% 及 2%。

1.3 現時,冰鮮和冷藏的豬肉及牛肉全部由外地入口。冰鮮豬肉及牛肉是指由屠宰、貯存、運送以至售賣階段,均以零度以上溫度處理的入口豬肉及牛肉。冷藏豬肉及牛肉是指屠宰後於攝氏零下 18 度以下繼續處理,並在此冷凍情況下出售的豬肉及牛肉。

1.4 本文回顧過去二十年本港市民食用豬肉及牛肉的情況,並分析其趨勢。

1.5 本文沒有涵蓋任何經非法屠宰活動和走私得來的豬肉及牛肉。

1. Introduction

1.1 Pork and beef (including fresh, chilled and frozen) are the usual diet of Hong Kong people. It was estimated that a person in Hong Kong consumed, on average, a total of 128.5 g of pork and beef per day in 2002, comprising 105.2 g of pork and 23.3 g of beef.

1.2 At present, 80% of fresh pork and fresh beef comes from imported livestock from the mainland of China and 20% from local production. The live pigs and cattle are currently slaughtered by three licensed slaughter-houses in Sheung Shui, Tsuen Wan and Cheung Chau. Their percentage shares among the total kills of pigs and cattle were 73.6%, 25.9% and 0.5% respectively. These slaughter-houses were privately operated and licensed by the Food and Environmental Hygiene Department. Of the total pigs and cattle slaughtered in 2002, 98% were pigs and 2% were cattle.

1.3 The supply of chilled and frozen pork and beef comes solely from imports currently. Chilled pork and beef refer to imported processed pork and beef which have been preserved *at a temperature above freezing point* from the point of slaughter, storage and transportation to the point of sale. Frozen pork and beef refer to the pork and beef which have been *kept to below $-18^{\circ}C$* after slaughter and sold in a frozen state.

1.4 This article reviews the local consumption of pork and beef in the past twenty years and analyses their consumption trends.

1.5 Pork and beef from illegal slaughtering activities and smuggling are excluded from the coverage of this article.

2. 豬肉的食用量

2.1 按年齡和未屠宰前的重量，活豬可分為肉豬（9個月大或以上及屠宰前約重100公斤的大豬）、燒種豬（約4個月大及屠宰前約重40公斤的中豬）及乳豬（不足4星期大及屠宰前重量少於10公斤的幼豬）。

2.2 肉豬佔豬隻總屠宰量的百分比，由一九九四年的78%，明顯上升至二零零二年的89%。在同期，燒種豬的有關百分比則由20%顯著下降至11%。值得注意的是，乳豬的屠宰量由一九九四年的39 800頭，銳減至二零零二年的只有2頭。（圖一）

2.3 對新鮮豬肉食用量進行的估計，是以屠宰豬隻的數目，乘以豬隻屠宰後所得的平均肉量。豬隻屠宰後所得的平均肉量是指從豬隻去臟屠體平均肉量中所得的新鮮豬肉的淨重。根據早前一項研究，新鮮豬肉的淨重訂為豬隻去臟屠體重量的70%。

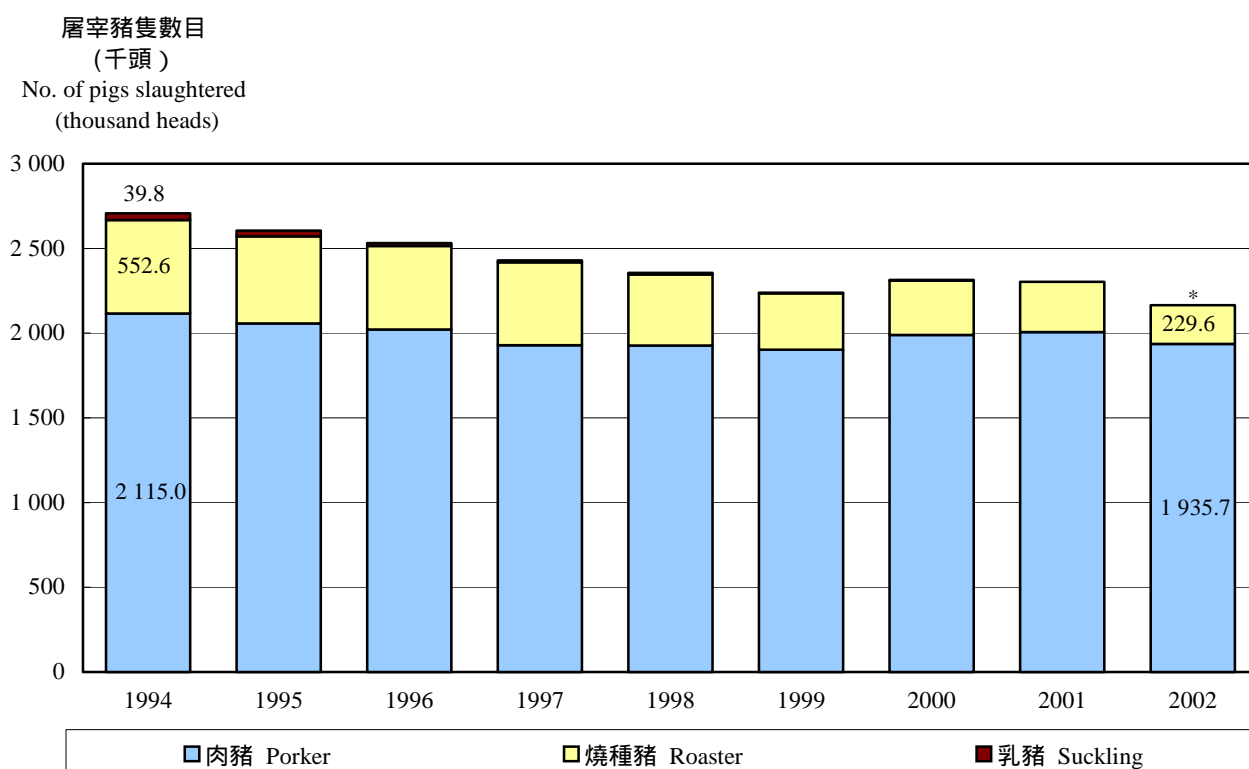
2. Pork Consumption

2.1 Live pigs are classified by their age and live weight into porkers (large pigs of 9 months old or above, with live weight around 100 kg), roasters (medium size pigs of around 4 months old, with live weight around 40 kg), and sucklings (young pigs of less than 4 weeks old, with live weight below 10 kg).

2.2 The percentage share of porkers among total kills grew significantly from 78% in 1994 to 89% in 2002, while that for roasters noted a markedly decrease from 20% to 11% during the same period. It is noteworthy that the kills of sucklings dropped rapidly from 39 800 in 1994 to only 2 in 2002. (Chart 1)

2.3 To estimate the fresh pork consumption, the number of pigs slaughtered is multiplied by the average meat yield of pigs. The average meat yield of pigs refers to the net weight of fresh pork available from the average dressed carcass weight per pig after the pig is slaughtered. The net weight of fresh pork is taken to be 70% of the dressed carcass weight of pigs, according to a study conducted earlier.

圖一 一九九四年至二零零二年按豬隻類別劃分的在香港屠宰的豬隻數目
Chart 1 Number of Pigs Slaughtered in Hong Kong by Type of Pig, 1994 – 2002



註釋：一九九四年前按豬隻類別劃分的屠宰數目未有記錄。
* 二零零二年乳豬的屠宰數目是2頭。

Note: Statistical breakdowns by type of pig among total kills are not available before 1994.
* The number of sucklings slaughtered in 2002 was 2 heads.

2.4 一九八二年至二零零二年間，屠宰豬隻的數量明顯下降 37.6%，由一九八二年的 347 萬頭，下跌至二零零二年的 217 萬頭。（圖二）

2.5 另一方面，豬隻屠宰後所得的平均肉量，在同期上升 40.0%。自一九九四年起，上升的趨勢更加明顯，其原因可能是由於豬隻繁殖的方法有所改良，以及肉豬的屠宰量有所增加所致。（圖二）

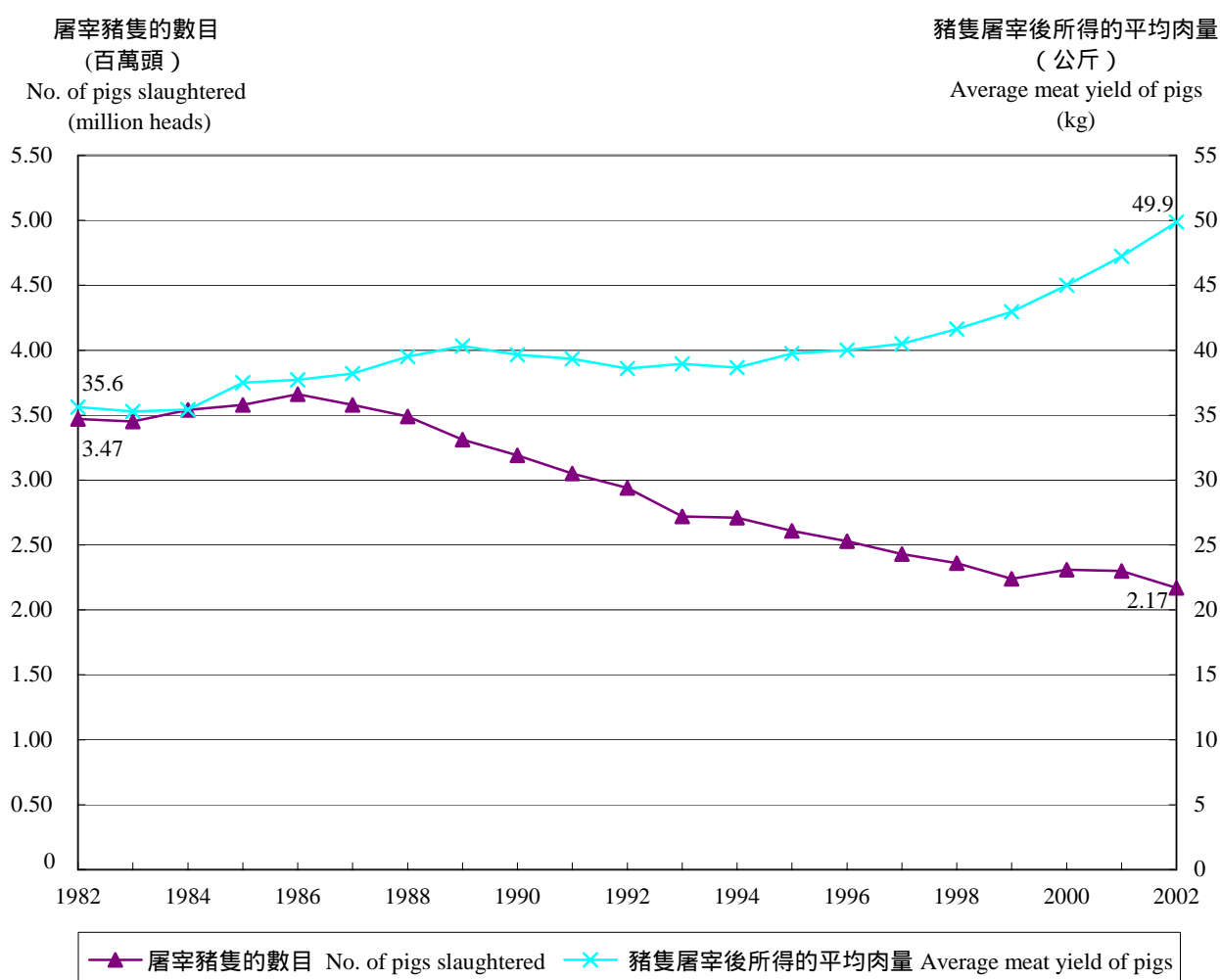
2.6 整體而言，一九八二年至二零零二年間新鮮豬肉的食用量下降了 12.6%。（圖三）

2.4 From 1982 to 2002, the number of pigs slaughtered in Hong Kong decreased significantly by 37.6%, from 3.47 million heads in 1982 to 2.17 million heads in 2002. (Chart 2)

2.5 The average meat yield of pigs rose remarkably by 40.0% over the same period. The increasing trend was more obvious since 1994, possibly due to the improvement on pig breeding method and the increase in number of total kills of porkers. (Chart 2)

2.6 Overall speaking, the total consumption of fresh pork declined by 12.6% from 1982 to 2002. (Chart 3)

圖二 一九八二年至二零零二年在香港屠宰的豬隻數目及豬隻屠宰後所得的平均肉量
Chart 2 Number of Pigs Slaughtered and Average Meat Yield of Pigs in Hong Kong, 1982 – 2002



註釋：一九八二年至一九八八年豬隻屠宰後所得的平均肉量為修訂數字。

Note: The figures for average meat yield of pigs from 1982 to 1988 are revised figures.

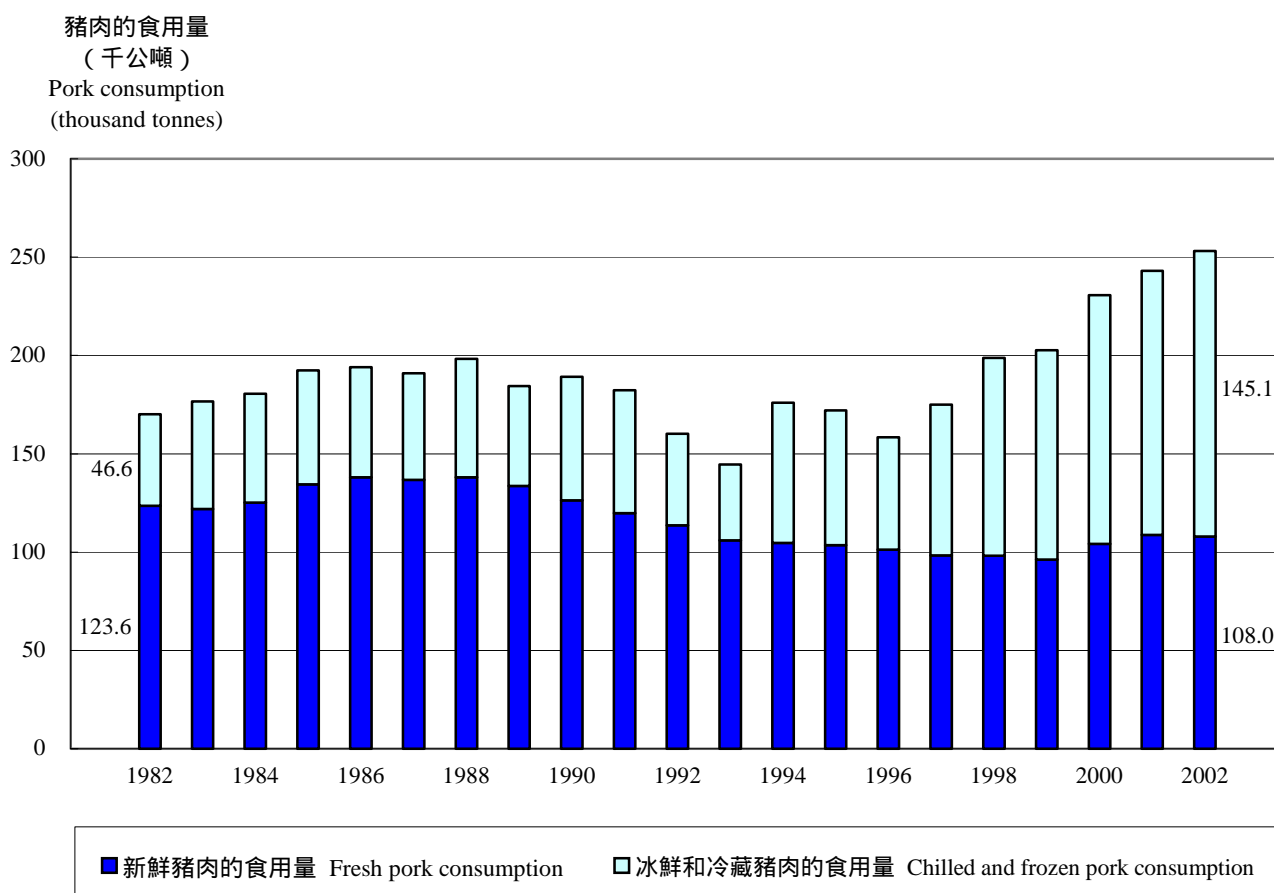
2.7 對冰鮮和冷藏豬肉食用量進行的估計，是以入口冰鮮和冷藏豬肉的總肉量，減去轉口的冰鮮和冷藏豬肉的總肉量。冰鮮和冷藏豬肉的總食用量，由一九八二年的 4.66 萬公噸，急劇上升至二零零二年的 14.51 萬公噸，暴升超過 200%。（圖三）

2.7 To estimate the chilled and frozen pork consumption, the total import amount of chilled and frozen pork is subtracted by the re-export amount of chilled and frozen pork. The consumption of chilled and frozen beef increased rapidly from 46.6 thousand tonnes in 1982 to 145.1 thousand tonnes in 2002, representing a sharp growth of more than 200%. (Chart 3)

2.8 值得注意的是，市民食用新鮮豬肉與食用冰鮮和冷藏豬肉量的比例，由一九八二年的 2.7 比 1 大幅下降至二零零二年的 0.7 比 1。（圖三）

2.8 It is noteworthy that the ratio of fresh pork consumption to chilled and frozen consumption substantially decreased from 2.7 : 1 in 1982 to 0.7 : 1 in 2002. (Chart 3)

圖三 一九八二年至二零零二年香港新鮮、冰鮮和冷藏豬肉的食用量
Chart 3 Fresh Pork and Chilled and Frozen Pork Consumption in Hong Kong, 1982 – 2002



註釋：一九八二年至一九八八年新鮮豬肉的食用量為修訂數字。

Note: The figures for fresh pork consumption of pigs from 1982 to 1988 are revised figures.

2.9 表一列載的數字，是新鮮、冰鮮和冷藏豬肉的人均食用量。將全港豬肉的總食用量除以全港年中人口，便能計算出豬肉的人均食用量。根據估計，每年本港遊客食用豬肉量相比於每年本港市民食用豬肉量是微不足道的。因此，遊客食用豬肉量對本港人均食用豬肉量的分析影響微乎其微。

2.10 一九八二年至二零零二年間，市民食用新鮮豬肉的人均食用量顯著減少 30.3%，然而，冰鮮和冷藏豬肉的人均食用量則大幅上升 148.6%。整體而言，同期間食用豬肉的人均總食用量有 18.7% 的升幅，即由一九八二年的 32.3 公斤上升至二零零二年的 38.4 公斤。(表一)

2.11 自一九九八年起，冰鮮及冷藏豬肉的人均食用量已超過新鮮豬肉的人均食用量。(表一)

2.9 Statistics on the per capita consumption of fresh pork, chilled and frozen pork are presented in Table 1. They are obtained by dividing the total consumption of pork by the mid-year population. The annual pork consumption by Hong Kong visitors is estimated to be insignificant, if compared with the annual population consumption of pork. Therefore, the visitor consumption of pork has very little impact on the analysis of per capita pork consumption.

2.10 From 1982 to 2002, the per capita fresh pork consumption decreased markedly by 30.3%, while the per capita chilled and frozen pork consumption increased substantially by 148.6%. Overall speaking, the per capita total pork consumption grew by 18.7% during the same period, from 32.3 kg in 1982 to 38.4 kg in 2002. (Table 1)

2.11 Since 1998, the per capita consumption of chilled and frozen pork has exceeded that of fresh pork. (Table 1)

表一 一九八二年至二零零二年按豬肉類別劃分的香港人均豬肉食用量

Table 1 Per Capita Pork Consumption in Hong Kong by Type of Pork, 1982 – 2002

年份 Year	人均豬肉食用量 (公斤) Per Capita Pork Consumption (kg)		
	新鮮豬肉 Fresh Pork	冰鮮和冷藏豬肉 Chilled and Frozen Pork	總計 Total
1982	23.5 * (72.6)	8.8 (27.4)	32.3 *
1983	22.8 * (69.0)	10.3 (31.0)	33.1 *
1984	23.2 * (69.4)	10.2 (30.6)	33.4 *
1985	24.6 * (69.9)	10.6 (30.1)	35.3 *
1986	25.0 * (71.1)	10.1 (28.9)	35.1 *
1987	24.5 * (71.6)	9.7 * (28.4)	34.2 *
1988	24.5 * (69.6)	10.7 * (30.4)	35.2 *
1989	23.5 (72.5)	8.9 (27.5)	32.4
1990	22.1 (66.8)	11.0 (33.2)	33.2
1991	20.8 (65.8)	10.8 (34.2)	31.7
1992	19.6 (70.9)	8.0 (29.1)	27.6
1993	18.0 (73.4)	6.5 (26.6)	24.5
1994	17.3 (59.5)	11.8 (40.5)	29.2
1995	16.8 (60.2)	11.1 (39.8)	27.9
1996	16.2 (63.9)	9.2 (36.1)	25.4
1997	15.6 (56.2)	12.2 (43.8)	27.8
1998	15.4 (49.3)	15.8 (50.7)	31.3
1999	15.0 (47.5)	16.6 (52.5)	31.5
2000	16.1 (45.2)	19.5 (54.8)	35.6
2001	16.6 (44.8)	20.5 (55.2)	37.1
2002	16.4 (42.7)	22.0 (57.3)	38.4

註釋：* 修訂數字

括號內的數字為相關的百分比。

由於進位原因，有些數字相加後未必與總計相符。

Notes : * Revised figures

Figures in brackets refer to the respective percentage share.

Figures may not add up to their respective totals due to rounding.

3. 牛肉的食用量

3.1 對新鮮牛肉食用量進行的估計，是以屠宰牛隻的數目，乘以牛隻屠宰後所得的平均肉量。牛隻屠宰後所得的平均肉量是指從牛隻去臟屠體平均肉量中所得的新鮮牛肉的淨重。根據早前一項研究，新鮮牛肉的淨重訂為牛隻去臟屠體重量的 80%。

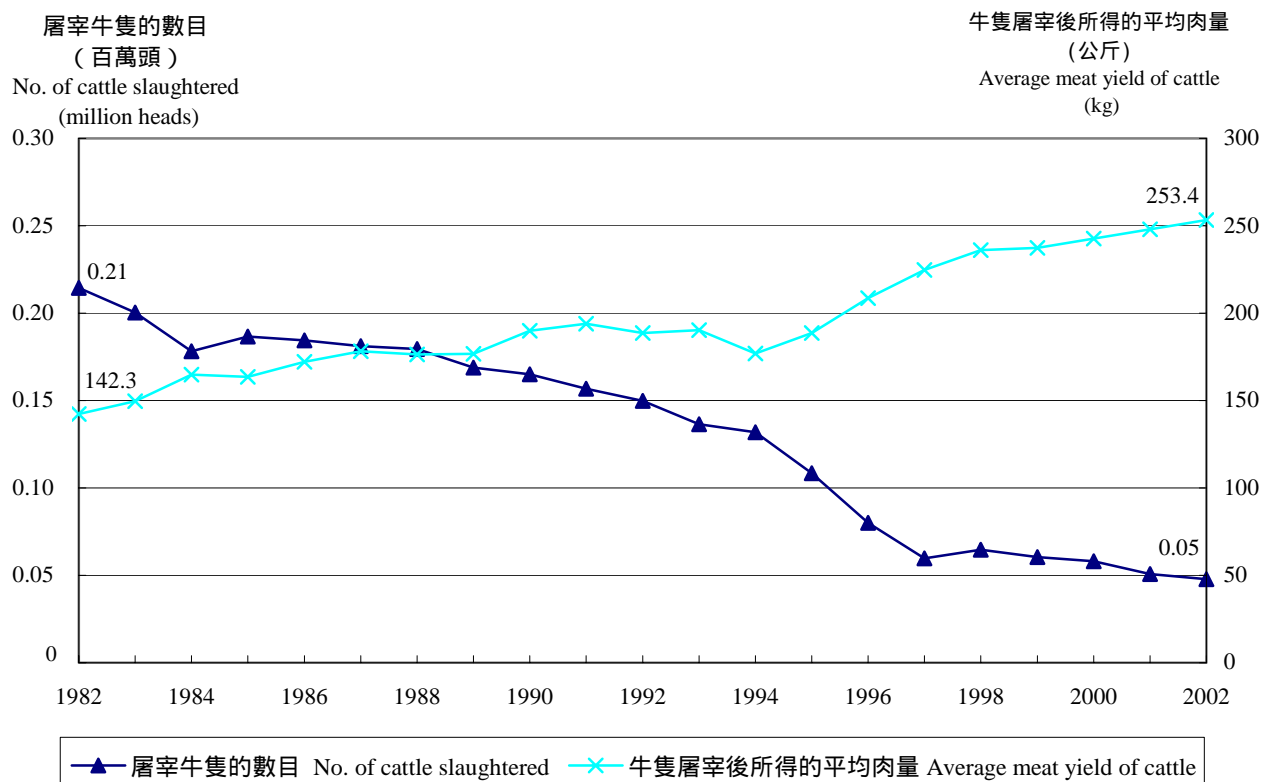
3.2 一九八二年至二零零二年間，屠宰牛隻的數量明顯縮減 77.7%，由一九八二年的 21 萬頭，減至二零零二年的 5 萬頭。在同期，牛隻經屠宰後所得的平均肉量大幅上升了 78.0%，這可能是由於牛隻繁殖方法有所改良。整體來說，同期間新鮮牛肉的食用量下降 60.4%。（圖四及圖五）

3. Beef Consumption

3.1 To estimate the fresh beef consumption, the number of cattle slaughtered is multiplied by the average meat yield of cattle. The average meat yield of cattle refers to the net weight of fresh beef available from the average dressed carcass weight per head of cattle after slaughter. The net weight of fresh beef is taken to be 80% of the dressed carcass weight of cattle, according to a study conducted earlier.

3.2 From 1982 to 2002, the number of cattle slaughtered diminished significantly by 77.7%, from 0.21 million heads in 1982 to 0.05 million heads in 2002. In the same period, the average meat yield of cattle increased substantially by 78.0%. It was possibly due to the improvement on cattle breeding method. Overall speaking, the total consumption of fresh beef declined by 60.4% during the same period. (Chart 4 and Chart 5)

圖四 一九八二年至二零零二年在香港屠宰的牛隻數目及牛隻屠宰後所得的平均肉量
Chart 4 Number of Cattle Slaughtered and Average Meat Yield of Cattle in Hong Kong, 1982 – 2002



3.3 對冰鮮和冷藏牛肉食用量進行的估計，是以入口冰鮮和冷藏牛肉的總肉量，減去轉口的冰鮮和冷藏牛肉的總肉量。冰鮮和冷藏牛肉的總食用量，由一九八二年的 2.16 萬公噸，迅速上升至二零零二年的 4.40 萬公噸。（圖五）

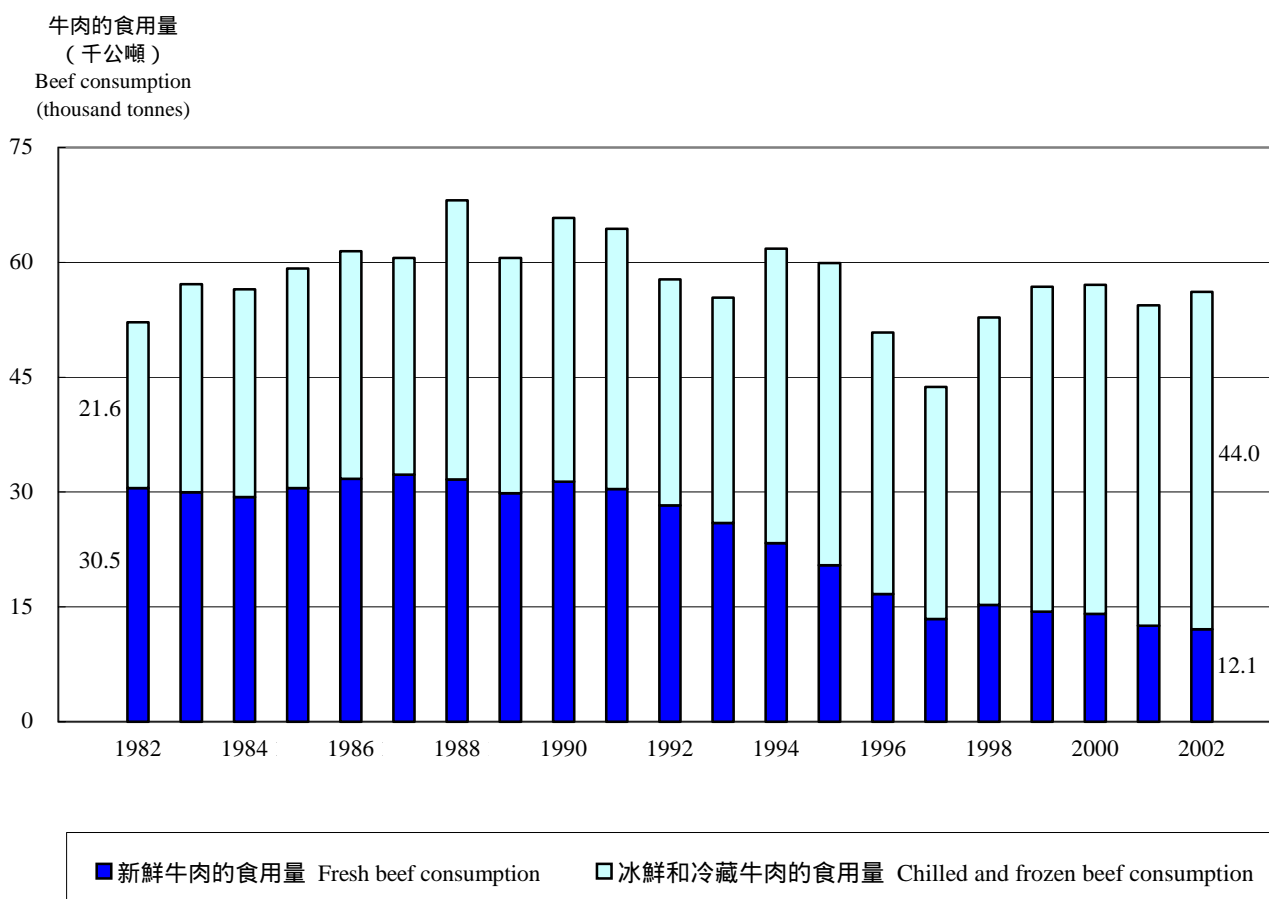
3.3 To estimate the chilled and frozen beef consumption, the total import amount of chilled and frozen beef is subtracted by the re-export amount of chilled and frozen beef. The consumption of chilled and frozen beef rose rapidly from 21.6 thousand tonnes in 1982 to 44.0 thousand tonnes in 2002. (Chart 5)

3.4 值得注意的是，市民食用新鮮牛肉與食用冰鮮和冷藏牛肉量的比例，由一九八二年的 1.4 比 1 暴跌至二零零二年的 0.3 比 1。（圖五）

3.4 It is noteworthy that the ratio of fresh beef consumption to chilled and frozen consumption decreased sharply from 1.4 : 1 in 1982 to 0.3 : 1 in 2002. (Chart 5)

圖五 一九八二年至二零零二年香港新鮮、冰鮮和冷藏牛肉的食用量

Chart 5 Fresh Beef and Chilled and Frozen Beef Consumption in Hong Kong, 1982 – 2002



3.5 表二列載的數字，是新鮮、冰鮮和冷藏牛肉的人均食用量。計算牛肉的人均食用量與計算人均豬肉食用量的方法相同。

3.6 一九八二年至二零零二年間，市民食用新鮮牛肉的人均食用量顯著下降 68.4%，冰鮮和冷藏牛肉的人均食用量卻明顯上升 62.4%。整體而言，同期間食用牛肉的人均總食用量有 14.1% 的減幅，即由一九八二年的 9.9 公斤至二零零二年的 8.5 公斤。（表二）

3.7 自一九八八年起，冰鮮和冷藏牛肉的人均食用量已超過新鮮牛肉的人均食用量。人均食用豬肉的情況，在一九九八年起，即十年後，也出現同樣的現象。（表二）

3.5 Statistics on the per capita consumption of fresh beef, chilled and frozen beef are presented in Table 2. The compilation method of the per capita consumption of beef is the same as that of pork.

3.6 From 1982 to 2002, the per capita fresh beef consumption declined remarkably by 68.4%, while the per capita chilled and frozen beef consumption increased significantly by 62.4%. Overall speaking, the per capita beef consumption decreased by 14.1% during the same period, from 9.9 kg in 1982 to 8.5 kg in 2002. (Table 2)

3.7 Since 1988, the per capita consumption of chilled and frozen beef has exceeded that of fresh beef. The same phenomenon for pork was observed in 1998, 10 years after its occurrence in the case of beef. (Table 2)

表二 一九八二年至二零零二年按牛肉類別劃分的香港人均牛肉食用量
Table 2 Per Capita Beef Consumption in Hong Kong by Type of Beef, 1982 – 2002

年份 Year	人均牛肉食用量 (公斤) Per capita beef consumption (kg)		
	新鮮牛肉 Fresh beef	冰鮮和冷藏牛肉 Chilled and frozen beef	總計 Total
1982	5.8 (58.5)	4.1 (41.5)	9.9
1983	5.6 (52.5)	5.1 (47.5)	10.7
1984	5.4 (52.0)	5.0 (48.0)	10.5
1985	5.6 (51.6)	5.3 (48.4)	10.8
1986	5.7 (51.6)	5.4 (48.4)	11.1
1987	5.8 (53.3)	5.1 (46.7)	10.9
1988	5.6 (46.5)	6.5 * (53.5)	12.1 *
1989	5.2 (49.2)	5.4 (50.8)	10.7
1990	5.5 (47.7)	6.0 (52.3)	11.5
1991	5.3 (47.2)	5.9 (52.8)	11.2
1992	4.9 (48.9)	5.1 (51.1)	10.0
1993	4.4 (46.8)	5.0 (53.2)	9.4
1994	3.9 (37.8)	6.4 (62.2)	10.2
1995	3.3 (34.1)	6.4 (65.9)	9.7
1996	2.7 (32.9)	5.5 (67.1)	8.1
1997	2.1 (30.7)	4.8 (69.3)	6.9
1998	2.4 (28.9)	5.9 (71.1)	8.3
1999	2.2 (25.3)	6.6 (74.7)	8.8
2000	2.2 (24.7)	6.6 (75.3)	8.8
2001	1.9 (23.1)	6.4 (76.9)	8.3
2002	1.8 (21.6)	6.7 (78.4)	8.5

註釋：* 修訂數字
括號內的數字為相關的百分比。
由於進位原因，有些數字相加後未必與總計相符。

Notes : * Revised figures
Figures in brackets refer to the respective percentage share.
Figures may not add up to their respective totals due to rounding.

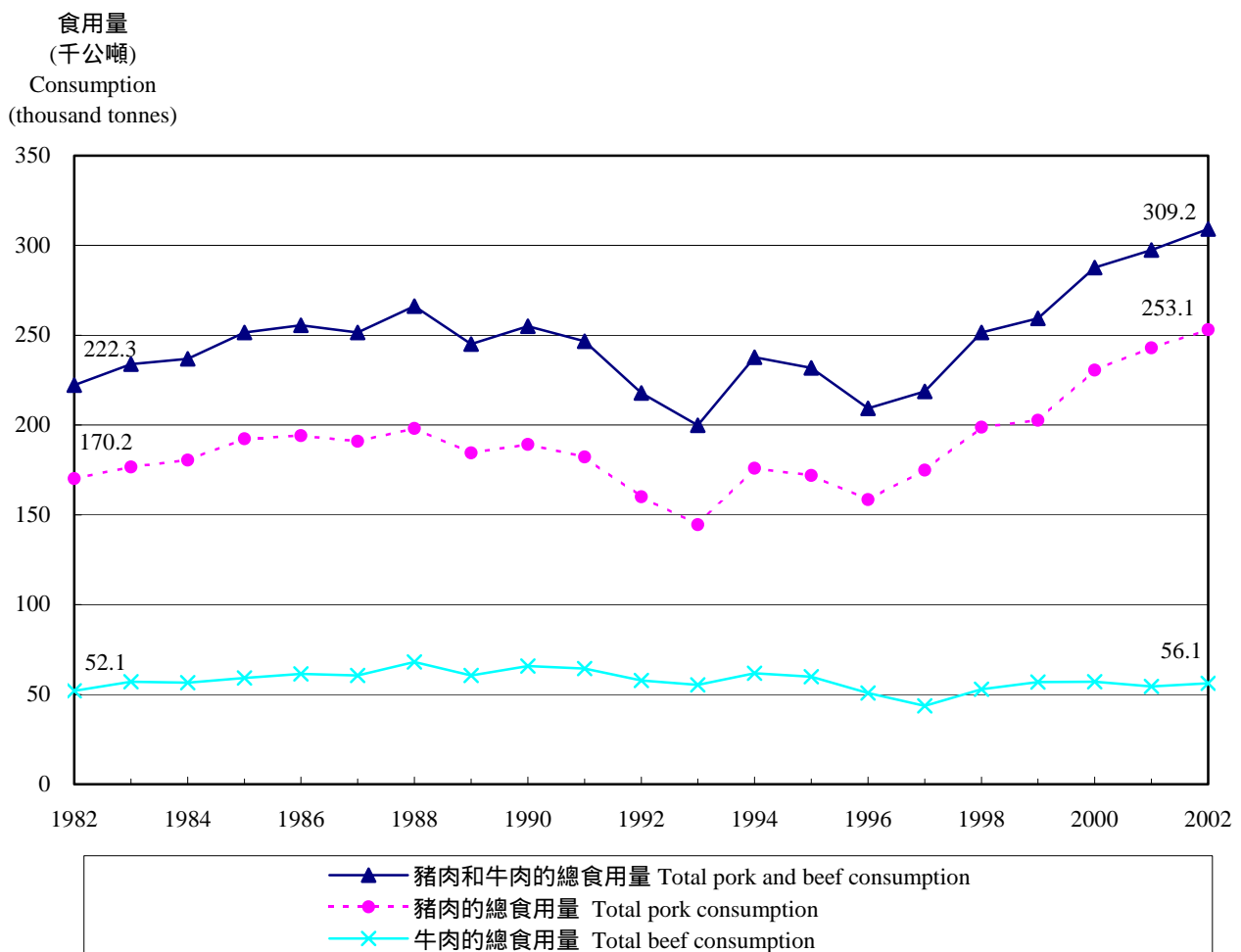
4. 豬肉及牛肉的總食用量

4.1 一九八二年至二零零二年間，豬肉及牛肉的總食用量上升 39.1%，平均按年增長率為 1.6%。（圖六）

4. Total Pork and Beef Consumption

4.1 From 1982 to 2002, the pork and beef consumption increased by 39.1%, representing an average annual rate of increase of 1.6%. (Chart 6)

圖六 一九八二年至二零零二年香港豬肉及牛肉的總食用量
Chart 6 Total Pork and Beef Consumption in Hong Kong, 1982 – 2002



註釋：一九八二至一九八八年豬肉和牛肉的總食用量及豬肉的總食用量為修訂數字。

Note: The figures for total pork and beef consumption and total pork consumption from 1982 to 1988 are revised figures.

4.2 若將同期的人口增長計算在內，人均豬肉及牛肉的總食用量，由一九八二年的42.2公斤增加至二零零二年的46.9公斤，升幅為11.0%。（表三）

4.3 值得注意的是，在一九八二年至一九九六年間，人均豬肉總食用量與人均牛肉總食用量之比例大致保持穩定，約為3比1。由一九九七年起，該比例開始出現上升趨勢，至二零零二年已達4.5比1。（表三）

4.2 Taking into account the growth of population, the per capita total pork and beef consumption had increased by 11.0%, from 42.2 kg in 1982 to 46.9 kg in 2002. (Table 3)

4.3 It is of interest to note that the ratio of per capita total pork consumption to per capita total beef consumption remained rather stable at around 3:1 from 1982 to 1996. Since 1997, the ratio was on an upward trend and rose to 4.5 : 1 in 2002. (Table 3)

表三 一九八二年至二零零二年香港人均豬肉及牛肉的食用量
Table 3 Per Capita Consumption of Pork and Beef in Hong Kong, 1982 – 2002

年份 Year	人均食用量 (公斤) Per capita consumption (kg)			人均豬肉食用量與 人均牛肉食用量之比例 Ratio of per capita pork consumption to per capita beef consumption
	豬肉 Pork	牛肉 Beef	豬肉和牛肉 Pork and beef	
1982	32.3 *	9.9	42.2 *	3.3 : 1
1983	33.1 *	10.7	43.7 *	3.1 : 1
1984	33.4 *	10.5	43.9 *	3.2 : 1
1985	35.3 *	10.8	46.1 *	3.3 : 1
1986	35.1 *	11.1	46.2 *	3.2 : 1
1987	34.2 *	10.9	45.1 *	3.2 : 1
1988	35.2 *	12.1 *	47.3 *	2.9 : 1
1989	32.4	10.7	43.1	3.0 : 1
1990	33.2	11.5	44.7	2.9 : 1
1991	31.7	11.2	42.9	2.8 : 1
1992	27.6	10.0	37.6	2.8 : 1
1993	24.5	9.4	33.9	2.6 : 1
1994	29.2	10.2	39.4	2.8 : 1
1995	27.9	9.7	37.7	2.9 : 1
1996	25.4	8.1	33.5	3.1 : 1
1997	27.8	6.9	34.7	4.0 : 1
1998	31.3	8.3	39.6	3.8 : 1
1999	31.5	8.8	40.4	3.6 : 1
2000	35.6	8.8	44.4	4.0 : 1
2001	37.1	8.3	45.5	4.5 : 1
2002	38.4	8.5	46.9	4.5 : 1

註釋：* 修訂數字

由於進位原因，有些數字相加後未必與總計相符。

Note : * Revised figures

Figures may not add up to their respective totals due to rounding.

二零零三年一月至 一月刊載的專題文章目錄

List of Feature Articles Published during January to November 2003

月份	文章題目	Month	Title of Article
1	(i) 對外直接投資統計 (ii) 一九九三至二零零二年中層經理級與專業僱員薪金統計數字 (iii) 一九九一至二零零一年的香港專利統計數字 (iv) 勞動人口推算 2002-2021	1	(i) External direct investment statistics (ii) Salary statistics of middle-level managerial and professional employees 1993-2002 (iii) Patent statistics for Hong Kong, 1991-2001 (iv) Labour force projections for 2002-2021
2	(i) 從事製造業相關活動的貿易公司 (ii) 服務業的生產者價格指數 (iii) 電子產品及電子行業統計數字	2	(i) Trading firms with manufacturing-related activities (ii) Producer price indices of service industries (iii) Statistics on electronic products and the electronics industry
3	(i) 經季節性調整的消費物價指數 (ii) 香港水務概覽 (iii) 一九八一年至二零零二年職位空缺統計數字 (iv) 一九九八至二零零一年香港的研究及發展統計數字	3	(i) Seasonally adjusted Consumer Price Indices (ii) An overview of water supplies in Hong Kong (iii) Statistics on job vacancies from 1981 to 2002 (iv) Research and development statistics of Hong Kong, 1998-2001
4	(i) 二零零二年就業綜合估計數字 (ii) 一九九三至二零零二年綜合社會保障援助計劃的統計數字 (iii) 二零零二年失業率的走勢 (iv) 二零零二年香港的中醫藥業	4	(i) Composite employment estimates 2002 (ii) Statistics on comprehensive social security assistance scheme, 1993-2002 (iii) The movement of the unemployment rate in 2002 (iv) The Chinese medicine sector in Hong Kong, 2002
5	(i) 香港進口貿易分析 (ii) 本港居民到中國內地旅行的消費開支 (iii) 一九九二至二零零二年香港的高科技產品貿易 (iv) 一九九八 / 九九至二零零二 / 零三年幼稚園學費統計	5	(i) Analysis of Hong Kong's imports (ii) Consumption expenditure of Hong Kong residents travelling to the mainland of China (iii) Trade in high technology products in Hong Kong, 1992-2002 (iv) Statistics on school fees of kindergartens, 1998/99-2002/03
6	(i) 二零零二年按區議會分區劃分的香港人口概況剖析 (ii) 香港的資訊科技及電訊業 (iii) 香港服務貿易的發展	6	(i) A profile of Hong Kong population analysed by District Council District, 2002 (ii) The information technology and telecommunications sector in Hong Kong (iii) Development of trade in services of Hong Kong
7	(i) 二零零二年香港國際投資頭寸 (ii) 香港的金融及商用服務業 (iii) 到中國內地作私人旅行的本港居民的社會經濟特徵 (iv) 一九九五 / 九六至二零零一 / 零二年度政府對研究及發展、創新及科技提升的資助 (v) 香港的印刷及出版業	7	(i) Hong Kong's international investment position for 2002 (ii) The financing and business services industries in Hong Kong (iii) Socio-economic characteristics of Hong Kong residents making personal travel to the mainland of China (iv) Government funding of research and development, innovation and technology upgrading, 1995/96-2001/02 (v) Printing and publishing industry in Hong Kong
8	(i) 一九八一至二零零二年香港的結婚及離婚趨勢 (ii) 消費者開支的趨勢 (iii) 一九九七年至二零零二年港口貨物統計	8	(i) Marriage and divorce trends in Hong Kong, 1981-2002 (ii) Trends in consumer spending (iii) Port cargo statistics, 1997-2002
9	(i) 一九九七年至二零零二年貨櫃統計 (ii) 空運貨物統計 (iii) 一九九三年至二零零二年香港道路交通意外統計 (iv) 一九九二至二零零二年香港能源統計數字 (v) 一九九五 / 九六至二零零一 / 零二年度香港高等教育機構的研究成果	9	(i) Container statistics, 1997-2002 (ii) Air cargo statistics (iii) Road traffic accidents statistics in Hong Kong, 1993-2002 (iv) Hong Kong energy statistics, 1992-2002 (v) Research output of higher education institutions in Hong Kong, 1995/96 to 2001/02
10	(i) 機構單位記錄庫及其服務簡介 (ii) 二零零二年香港國際投資頭寸與選定經濟體系的比較 (iii) 二零零二年香港的藥物濫用情況	10	(i) Introduction of the Central Register of Establishments and its services (ii) Comparing Hong Kong's international investment position with selected economies, 2002 (iii) Drug abuse situation in Hong Kong in 2002
11	(i) 一九八二至二零零二年香港豬肉及牛肉食用回顧 (ii) 香港主要經濟活動的勞工生產力指數	11	(i) A review of pork and beef consumption in Hong Kong, 1982 – 2002 (ii) Labour Productivity Index for major economic activities of Hong Kong

二零零三年十二月至二零零四年三月
政府統計處定期性統計數據發布日期一覽表

**Schedule for Issuing Regular Releases of Statistical Data by
the Census and Statistics Department, December 2003 - March 2004**

每年九月底，本處會向傳媒公布翌年定期性統計數據新聞發布的詳細時間表。本附錄載列未來四個月的發布日期。數據於發布日期下午四時十五分向傳媒公布。有關的新聞公布於稍後時間列載於政府統計處的網站上，網址是 <http://www.info.gov.hk/censtat/>。發布日期下午四時十五分後致電本處，亦可查詢有關統計數據。

The date schedule for issuing regular press releases of statistical data in the ensuing year is issued to the mass media in end September of each year. This Annex gives the schedule for the coming four months. Data are issued to the media at 4:15 p.m. on the date of release. The press releases are posted shortly afterwards on the Department's website (Address-<http://www.info.gov.hk/censtat/>). Telephone enquiries may also be made to the Department after 4:15 p.m. on the release date.

統計數據 Statistical Data		發布日期 (日/月/年) Release Date (Day/Month/Year)
人口統計 Population Statistics		
1. 二零零三年年底人口數字	End-year Population for 2003	17.02.2004
<i>查詢電話</i> Enquiry Telephone Number	2716 8044	
勞工統計 Labour Statistics		
1. 失業及就業不足統計	Unemployment and Underemployment Statistics	
二零零三年九月至十一月	September - November 2003	18.12.2003
二零零三年十月至十二月	October - December 2003	19.01.2004
二零零三年十一月至二零零四年一月	November 2003 - January 2004	19.02.2004
二零零三年十二月至二零零四年二月	December 2003 - February 2004	18.03.2004
<i>查詢電話</i> Enquiry Telephone Number	2887 5506	
2. 就業及空缺統計	Employment and Vacancies Statistics	
二零零三年九月	September 2003	22.12.2003
二零零三年十二月	December 2003	22.03.2004
<i>查詢電話</i> Enquiry Telephone Number	2582 4751	
3. 薪金總額及工資統計	Payroll and Wage Statistics	
二零零三年第三季	3rd Quarter 2003	30.12.2003
二零零三年第四季	4th Quarter 2003	30.03.2004
<i>查詢電話</i> Enquiry Telephone Number	2582 4746	

對外貿易統計

External Trade Statistics

1.	對外商品貿易總計數字	External Merchandise Trade Aggregate Figures	
	二零零三年十一月	November 2003	29.12.2003
	二零零三年十二月	December 2003	29.01.2004
	二零零四年一月	January 2004	26.02.2004
	二零零四年二月	February 2004	26.03.2004
	<i>查詢電話</i>		
	<i>Enquiry Telephone Number</i>	2582 5041	
2.	按國家 / 地區及貨品分析的對外商品貿易統計	External Merchandise Trade Statistics Classified by Country/Territory and Commodity	
	二零零三年十月	October 2003	05.12.2003
	二零零三年十一月	November 2003	06.01.2004
	二零零三年十二月	December 2003	03.02.2004
	二零零四年一月	January 2004	02.03.2004
	<i>查詢電話</i>		
	<i>Enquiry Telephone Number</i>	2582 5041	
3.	對外商品貿易貨量及價格統計	Volume and Price Statistics of External Merchandise Trade	
	二零零三年十月	October 2003	23.12.2003
	二零零三年十一月	November 2003	26.01.2004
	二零零三年十二月	December 2003	24.02.2004
	二零零四年一月	January 2004	25.03.2004
	<i>查詢電話</i>		
	<i>Enquiry Telephone Number</i>	2582 4914	
4.	按產品所屬工業劃分的本港製造業產品出口統計	Domestic Export Statistics Classified by Industrial Origin	
	二零零三年	2003	10.02.2004
	<i>查詢電話</i>		
	<i>Enquiry Telephone Number</i>	2805 6641	
5.	船隻、港口貨物及貨櫃統計	Statistics on Vessels, Port Cargo and Containers	
	二零零三年第三季	3rd Quarter 2003	11.12.2003
	二零零三年第四季	4th Quarter 2003	11.03.2004
	<i>查詢電話</i>		
	<i>Enquiry Telephone Number</i>	2582 4889	
6.	涉及外發中國內地加工貿易統計	Statistics on Trade Involving Outward Processing in the Mainland of China	
	二零零三年第三季	3rd Quarter 2003	23.12.2003
	二零零三年第四季	4th Quarter 2003	23.03.2004
	<i>查詢電話</i>		
	<i>Enquiry Telephone Number</i>	2565 7446	

物價統計

Price Statistics

1. 消費物價指數	Consumer Price Index	
二零零三年十一月	November 2003	22.12.2003
二零零三年十二月	December 2003	20.01.2004
二零零四年一月	January 2004	23.02.2004
二零零四年二月	February 2004	22.03.2004

查詢電話

Enquiry Telephone Number 2805 6401

國民收入及國際收支平衡統計

National Income and Balance of Payments Statistics

1. 本地生產總值	Gross Domestic Product	
二零零三年第四季 ⁽¹⁾	4th Quarter 2003 ⁽¹⁾	03.03.2004

查詢電話

Enquiry Telephone Number 2582 4787

註： (1) 財經事務及庫務局經濟分析部發布有關二零零三年第三季經濟報告及二零零三年全年本地生產總值暨物價預測最後修訂的新聞稿時，二零零三年第三季本地生產總值亦於該新聞稿中發布。政府統計處不會在當日就本地生產總值另發新聞稿。

Note: (1) The Economic Analysis Division of the Financial Services and the Treasury Bureau will issue a press release on the Third Quarter Economic Report 2003 and final update of GDP and prices forecasts for 2003 as a whole. The GDP for the third quarter of 2003 will also be released there. No separate press release on the GDP will be issued by the Census and Statistics Department on that day.

2. 以固定價格計算按經濟活動劃分的 按季本地生產總值	Quarterly Constant Price Gross Domestic Product by economic activity	
二零零三年第三季	3rd Quarter 2003	29.12.2003
二零零三年第四季	4th Quarter 2003	29.03.2004

查詢電話

Enquiry Telephone Number 2116 5188

3. 本地居民生產總值及對外要素收益 流動數字	Gross National Product and External Factor Income Flows	
二零零三年第三季	3rd Quarter 2003	19.12.2003
二零零三年第四季	4th Quarter 2003	19.03.2004

查詢電話

Enquiry Telephone Number 2116 5101

4. 國際收支平衡統計	Balance of Payments Statistics	
二零零三年第三季	3rd Quarter 2003	30.12.2003
二零零三年第四季	4th Quarter 2003	30.03.2004

查詢電話

Enquiry Telephone Number 2116 8660

其他各類統計
Various Other Types of Statistics

1.	手頭訂單按月統計 二零零三年十月 <i>查詢電話</i> <i>Enquiry Telephone Number</i>	Orders-on-hand Statistics October 2003 2805 6641	04.12.2003
2.	零售業銷貨額統計 二零零三年十月 二零零三年十一月 二零零三年十二月 二零零四年一月 <i>查詢電話</i> <i>Enquiry Telephone Number</i>	Retail Sales Statistics October 2003 November 2003 December 2003 January 2004 2802 1367	08.12.2003 08.01.2004 06.02.2004 08.03.2004
3.	工業生產指數和製造業生產者 價格指數 二零零三年第三季 二零零三年第四季 <i>查詢電話</i> <i>Enquiry Telephone Number</i>	Quarterly Index of Industrial Production and Quarterly Producer Price Indices for Manufacturing Industries 3rd Quarter 2003 4th Quarter 2003 2805 6641	19.12.2003 18.03.2004
4.	建造工程完成量統計 二零零三年第三季 二零零三年第四季 <i>查詢電話</i> <i>Enquiry Telephone Number</i>	Construction Output Statistics 3rd Quarter 2003 4th Quarter 2003 2805 6424	18.12.2003 18.03.2004
5.	食肆的收入及購貨額統計 二零零三年第四季 <i>查詢電話</i> <i>Enquiry Telephone Number</i>	Restaurant Receipts and Purchases Statistics 4th Quarter 2003 2802 1367	16.02.2004
6.	服務行業按季業務收益指數 二零零三年第三季 二零零三年第四季 <i>查詢電話</i> <i>Enquiry Telephone Number</i>	Quarterly Business Receipts Indices for Service Industries 3rd Quarter 2003 4th Quarter 2003 2802 1269	19.12.2003 19.03.2004
7.	按季業務展望統計調查結果 二零零四年第一季 <i>查詢電話</i> <i>Enquiry Telephone Number</i>	Results of the Quarterly Business Tendency Survey 1st Quarter 2004 2805 6112	03.02.2004

名稱	Title	售價不包括 郵費(港元) Price Not Including Postage (HK\$)	售價連本地 郵費(港元) Price Including Local Postage (HK\$)
(一) 刊物	(A) Publications		
綜合性統計刊物	General Statistical Digests		
香港經濟趨勢 (半月刊)	Hong Kong Economic Trends (<i>half-monthly</i>)	13.0	16.0
香港統計月刊 ** §	Hong Kong Monthly Digest of Statistics ** §	60.0	76.5
香港統計年刊, 二零零三年版 §	Hong Kong Annual Digest of Statistics, 2003 Edition §	74.0	102.0
香港社會及經濟趨勢, 二零零一年版 (雙年刊)	Hong Kong Social and Economic Trends, 2001 Edition (<i>biennial</i>)	84.0	100.4
香港的發展(1967 - 2002) - 統計圖表集 §	A Graphic Guide on Hong Kong's Development (1967 - 2002) §	38.0	54.4
香港統計數字一覽, 二 三年版 (年刊) ++	Hong Kong in Figures, 2003 Edition (<i>annual</i>) ++	免費 Free	-
對外貿易	External Trade		
商品貿易統計	Merchandise Trade Statistics		
香港商品貿易統計:	Hong Kong Merchandise Trade Statistics:		
進口 (月刊)	Imports (<i>monthly</i>)	208.0	236.0
港產品出口及轉口 (月刊)	Domestic Exports and Re-exports (<i>monthly</i>)	208.0	236.0
二零零二年周年附刊, 按國家及貨品劃分:	Annual Supplement 2002, Country by Commodity:		
- 進口	- Imports	198.0	226.0
- 港產品出口及轉口	- Domestic Exports and Re-exports	198.0	245.0
上述商品貿易統計刊物亦備電腦輸出縮微膠片 (COM)+:	The above merchandise trade statistics publications are also available in Computer Output Microfiche (COM) +:		
進口 (月刊)	Imports (<i>monthly</i>)	52.5	##
港產品出口 (月刊)	Domestic Exports (<i>monthly</i>)	33.0	##
轉口 (月刊)	Re-exports (<i>monthly</i>)	70.0	##
周年附刊	Annual Supplement		
- 進口	- Imports	93.5	##
- 港產品出口	- Domestic Exports	70.5	##
- 轉口	- Re-exports	146.5	##
香港對外商品貿易 (月刊)	Hong Kong External Merchandise Trade (<i>monthly</i>)	55.0	71.5
二零零二年香港對外商品貿易回顧 (年刊)	Annual Review of Hong Kong External Merchandise Trade 2002 (<i>annual</i>)	56.0	64.2
香港商品貿易指數 (月刊)	Hong Kong Merchandise Trade Index Numbers (<i>monthly</i>)	13.0	17.0
對外商品貿易數字 (月刊)	External Merchandise Trade Figures (<i>monthly</i>)	免費 Free	-
按產品所屬工業劃分的本港產品出口貨值 (季刊)	Merchandise Domestic Exports Statistics Classified by Industrial Origin (<i>quarterly</i>)	免費 Free	-
船務統計	Shipping Statistics		
香港船務統計 (季刊)	Hong Kong Shipping Statistics (<i>quarterly</i>)	48.0	56.5
服務貿易統計	Trade in Services Statistics		
二零零一年香港服務貿易統計報告 (年刊)	Report on Hong Kong Trade in Services Statistics for 2001 (<i>annual</i>)	30.0	34.4
國民收入	National Income		
本地生產總值 (季刊)	Gross Domestic Product (<i>quarterly</i>)	30.0	34.5
二 二年本地生產總值 (年刊) ++	2002 Gross Domestic Product (<i>annual</i>) ++	47.0	55.2
本地生產總值特刊, 二零零二年八月 (特刊)	Special Report on Gross Domestic Product, August 2002 (<i>ad hoc</i>)	46.0	54.2
國際收支平衡	Balance of Payments		
香港國際收支平衡統計 一九九七年至一九九九年 (特刊)	Balance of Payments Statistics of Hong Kong 1997 to 1999 (<i>ad hoc</i>)	14.0	18.0
香港國際收支平衡統計 (季刊)	Balance of Payments Statistics of Hong Kong (<i>quarterly</i>)	27.0	31.0
勞工	Labour		
勞動人口、就業及空缺統計	Labour Force, Employment and Vacancy Statistics		
綜合住戶統計調查按季統計報告書	Quarterly Report on General Household Survey	40.0	48.5
就業及空缺按季統計報告	Quarterly Report of Employment and Vacancies Statistics	32.0	36.5
建築地盤就業及空缺按季統計報告	Quarterly Report of Employment and Vacancies at Construction Sites	23.0	27.0
就業及空缺統計 (詳細統計表) (年刊):	Employment and Vacancies Statistics (Detailed Tables) (<i>annual</i>):		
甲系列 (服務業), 2003	Series A (Services Sectors), 2003	55.0	71.4
乙系列 (批發、零售、飲食及酒店業), 2003	Series B (Wholesale and Retail Trades, Restaurants and Hotels), 2003	35.0	39.4
丙系列 (工業), 2002	Series C (Industrial Sectors), 2002	80.0	96.4
丁系列 (進出口貿易業), 2002	Series D (Import/Export Trades), 2002	30.0	34.0

名稱	Title	售價不包括 郵費(港元) Price Not Including Postage (HK\$)	售價連本地 郵費(港元) Price Including Local Postage (HK\$)
(一) 刊物 (續)	(A) Publications (Cont'd.)		
勞工(續)	Labour (Cont'd.)		
工資及勞工收入統計	Wages and Labour Earnings Statistics		
工資及薪金總額按季統計報告	Quarterly Report of Wage and Payroll Statistics	35.0	43.5
二零零二年經理級與專業僱員薪金及 僱員福利統計報告 (高層管理人員除外) (年刊) §	2002 Report of Salaries and Employee Benefits Statistics Managerial and Professional Employees (Excluding Top Management) (annual) §	22.0	26.4
僱用於政府建築工程的工人每日平均工資 (月刊)	Average Daily Wages of Workers Engaged in Government Building and Construction Projects (monthly)	免費 Free	-
人力統計	Manpower Statistics		
二零零二年人力培訓及工作技能需求機構單位 統計調查報告 (特刊)	Report on 2002 Establishment Survey on Manpower Training and Job Skills Requirements (ad hoc)	48.0	56.2
消費物價及住戶開支	Consumer Prices and Household Expenditure		
消費物價指數月報	Monthly Report on the Consumer Price Index	35.0	39.5
二零零二年消費物價指數年報	Annual Report on the Consumer Price Index 2002	36.0	44.2
一九九九年至二零零零年住戶開支統計調查 及重訂消費物價指數基期 (特刊)	1999/2000 Household Expenditure Survey and the Rebasing of the Consumer Price Indices (ad hoc)	28.0	36.2
工商業	Commerce and Industry		
工業生產	Industrial Production		
二零零一年工業生產按年統計調查報告	Report on 2001 Annual Survey of Industrial Production	48.0	56.2
工業生產按季指數	Quarterly Index of Industrial Production	11.0	14.0
製造業按季生產者價格指數	Quarterly Producer Price Indices for Manufacturing Industries	10.0	13.0
紡織業生產按季統計數字	Quarterly Textile Production Statistics	4.0	7.0
經銷及服務業	Distribution and Services		
二零零一年批發、零售、進口與出口貿易、 食肆及酒店按年統計調查報告	Report on 2001 Annual Survey of Wholesale, Retail and Import and Export Trades, Restaurants and Hotels	44.0	52.2
食肆的收入及購貨額按季統計調查報告	Report on Quarterly Survey of Restaurant Receipts and Purchases	5.0	8.0
零售業銷貨額按月統計調查報告	Report on Monthly Survey of Retail Sales	8.0	11.0
二零零一年運輸及有關服務按年統計調查報告	Report on 2001 Annual Survey of Transport and Related Services	34.0	38.0
二零零一年倉庫、通訊、財務、保險及 商用服務按年統計調查報告	Report on 2001 Annual Survey of Storage, Communication, Financing, Insurance and Business Services	34.0	42.2
服務行業按季業務收益指數	Quarterly Business Receipts Indices for Service Industries	9.0	12.0
服務業統計摘要, 二零零三年版 (年刊)	Statistical Digest of the Services Sector, 2003 Edition (annual)	94.0	110.4
服務業統計摘要按季補充資料	Quarterly Supplement to Statistical Digest of the Services Sector	65.0	73.2
屋宇建築及建造	Building and Construction		
二零零一年屋宇建築、建造及地產業按 年統計調查報告	Report on 2001 Annual Survey of Building, Construction and Real Estate Sectors	32.0	36.4
建造工程完成量按季統計調查報告	Report on the Quarterly Survey of Construction Output	12.0	16.0
特選建築材料平均批發價格 (月刊)	Average Wholesale Prices of Selected Building Materials (monthly)	免費 Free	-
政府合約的工資及材料成本指數 (月刊)	Index Numbers of the Costs of Labour and Selected Materials Used in Government Contracts (monthly)	免費 Free	-
公營建築工程的工資及材料成本指數 (月刊)	Index Numbers of the Costs of Labour and Materials Used in Public Sector Construction Projects (monthly)	免費 Free	-
能源	Energy		
香港能源統計 (季刊)	Hong Kong Energy Statistics (quarterly)	23.0	27.0
香港能源統計, 二零零二年版	Hong Kong Energy Statistics, 2002 Edition	24.0	28.0
其他經濟及工商業統計	Other Economic and Business Statistics		
業務展望按季統計調查報告	Report on Quarterly Business Tendency Survey	9.0	12.0
手頭訂單按月統計調查	Monthly Survey of Orders-on-hand	8.0	11.0
二零零一年香港對外直接投資統計 (年刊)	External Direct Investment Statistics of Hong Kong 2001 (annual)	24.0	28.0
二零零二年海外公司駐香港的地區代表 按年統計調查報告 (年刊)	Report on 2002 Annual Survey of Regional Offices Representing Overseas Companies in Hong Kong (annual)	26.0	30.0
二零零二年資訊科技在工商業的使用情況 和普及程度按年統計調查報告 (年刊)	Report on 2002 Annual Survey on Information Technology Usage and Penetration in the Business Sector (annual)	68.0	76.2
二零零一年工商業創新活動按年統計調查 報告 (年刊)	Report on 2001 Annual Survey of Innovation Activities in the Business Sector (annual)	32.0	40.2
香港 - 資訊社會, 二零零二年版 (特刊)	Hong Kong as an Information Society, 2002 Edition (ad hoc)	42.0	50.2

名稱	Title	售價不包括	售價連本地
		郵費(港元) Price Not Including Postage (HK\$)	郵費(港元) Price Including Local Postage (HK\$)
(一) 刊物 (續)	(A) Publications (Cont'd.)		
人口	Population		
香港二零零一年人口普查	Hong Kong 2001 Population Census		
二零零一年人口普查 (特刊)	2001 Population Census (<i>ad hoc</i>)		
簡要報告	Summary Results	38.0	46.2
主要報告 - 第一冊	Main Report - Volume I	84.0	100.4
主要報告 - 第二冊	Main Report - Volume II	66.0	82.4
主要統計表	Main Tables	70.0	86.4
統計圖解	Graphic Guide	30.0	38.2
有關各區議會分區的基本統計表	Basic Tables for District Council Districts	34.0	42.2
有關香港島各選區的基本統計表	Basic Tables for Constituency Areas : Hong Kong Island	40.0	56.4
有關九龍各選區的基本統計表	Basic Tables for Constituency Areas : Kowloon	48.0	64.4
有關新界各選區的基本統計表	Basic Tables for Constituency Areas : New Territories	74.0	102.0
區議會分區及選區統計表的附件 - 區域分界地圖	Boundary Maps Complementary to Tables for District Council Districts and Constituency Areas	122.0	150.0
有關各規劃統計小區的基本統計表	Basic Tables for Tertiary Planning Units	82.0	110.0
規劃統計小區統計表的附件 - 區域分界地圖	Boundary Maps Complementary to Tables for Tertiary Planning Units	42.0	50.2
主題性報告 - 青年	Thematic Report - Youths	36.0	44.2
主題性報告 - 女性及男性	Thematic Report - Women and Men	40.0	48.2
主題性報告 - 長者	Thematic Report - Older Persons	36.0	44.2
主題性報告 - 少數族裔人士	Thematic Report - Ethnic Minorities	44.0	52.2
主題性報告 - 內地來港定居未足七年人士	Thematic Report - Persons from the Mainland Having Resided in Hong Kong for Less Than 7 Years	38.0	46.2
主題性報告 - 單親人士	Thematic Report - Single Parents	36.0	44.2
其他與人口有關的刊物	Other Publications relating to Population		
香港人口推算 2002-2031 (特刊)	Hong Kong Population Projections 2002-2031 (<i>ad hoc</i>)	12.0	16.4
香港人口生命表 1996-2031 (特刊)	Hong Kong Life Tables 1996-2031 (<i>ad hoc</i>)	20.0	24.4
香港人口趨勢 1981-2001 (特刊)	Demographic Trends in Hong Kong 1981-2001 (<i>ad hoc</i>)	28.0	36.2
社會資料	Social Data		
從綜合住戶統計調查搜集所得的社會資料	Social Data Collected via the General Household Survey		
第三 四號專題報告書 (特刊):	Special Topics Report No. 34 (<i>ad hoc</i>):	65.0	73.2
就業人士轉工情況	Job-changing of employed persons		
臨時僱員就業情況	Casual employment		
僱員離職情況	Worker displacement		
主題性住戶統計調查第 四號報告書 (特刊):	Thematic Household Survey Report No. 14 (<i>ad hoc</i>):	66.0	74.2
運用時間的模式	Time Use Pattern		
參與無酬活動的情況	Pattern of Participation in Unpaid Activities		
參與社交活動的情況	Pattern of Participation in Social Activities		
家務分擔的情況	Sharing of Housework		
對料理家務者的意見	Views on Home-makers		
按區議會分區劃分的人口及住戶統計資料	Population and Household Statistics Analysed by District Council	22.0	25.7
2002 (年刊)	District 2002 (<i>annual</i>)		
一九九八年在香港發生的罪案及罪案事主 (特刊)	Crime and Its Victims in Hong Kong in 1998 (<i>ad hoc</i>)	38.0	54.4
香港的女性及男性 - 主要統計數字, 二零零三年版 (年刊)	Women and Men in Hong Kong - Key Statistics, 2003 Edition (<i>annual</i>)	40.0	48.2
統計分類表	Classification Lists		
香港進出口貨物分類表 (協調制度)	Hong Kong Imports and Exports Classification List		
二零零二年版 (特刊)	(Harmonized System) 2002 Edition (<i>ad hoc</i>)		
第一冊: 第一至第 類貨物	Volume One: Commodity Section I - X	24.0	40.4
第二冊: 第 一至第二 二類貨物	Volume Two: Commodity Section XI - XXII	26.0	42.4
第三冊: 按字母次序排列的貨物目錄	Volume Three: Alphabetical List of Articles	28.0	44.4

名稱	Title	售價不包括 郵費(港元) Price Not Including Postage (HK\$)	售價連本地 郵費(港元) Price Including Local Postage (HK\$)
(一) 刊物 (續)	(A) Publications (Cont'd.)		
統計分類表 (續)	Classification Lists (Cont'd)		
香港商品貿易統計分類表二零零二年版 (特刊)	Hong Kong Merchandise Trade Statistics Classification 2002 Edition (<i>ad hoc</i>)	62.0	78.4
香港標準行業分類 (第一冊) (特刊)++	Hong Kong Standard Industrial Classification (Volume One) (<i>ad hoc</i>)++	135.0	163.0
統計發展報告	Report on Statistical Development		
統計發展概要, 二零零三年版 (年刊)	An Outline of Statistical Development, 2003 Edition (<i>annual</i>)	44.0	52.2
(二) 唯讀光碟產品	(B) CD-ROM Products		
二零零一年人口普查	2001 Population Census		
- 統計表唯讀光碟 (不定期) ++ 載有372個常用統計表, 有關統計表涉及的主題廣泛, 包括人口、住戶、教育、經濟、房屋、內部遷移及人口分組等本港住戶及人口特徵。選定統計表亦載列按區議會分區 / 選區及規劃統計小區 / 街段劃分的統計數字。	- TAB on CD-ROM (<i>ad hoc</i>) ++ Contains 372 commonly used statistical tables. The tables cover a wide range of topics including demographic, household, education, economic, housing, internal migration and home moving, and population sub-group characteristics of the households and population in Hong Kong. There are also geographical breakdown of the statistics by District Council District/Constituency Area and Tertiary Planning Unit/Street Block in selected tables.	1,690.0	1,711.2
- 地圖唯讀光碟 (不定期) 以常用的格式提供一套數碼化的香港地圖, 內載的地域分界數碼地圖包括香港海岸線、區議會分區 / 選區分界、規劃統計小區 (及其合併組) 分界、街段 - 小合併組分界及新市鎮分界。配合適當的電腦軟件, 這套數碼地圖可把載於《二零零一年人口普查 - 統計表唯讀光碟》內的統計數據作地理顯示之用。	- MAP on CD-ROM (<i>ad hoc</i>) Contains a set of digital maps of Hong Kong in commonly used formats. The digital maps for geographical delineation included therein are Coastline of Hong Kong, District Council District/Constituency Area Boundary, Tertiary Planning Unit (and Groupings) Boundary, Small Street Block Group Boundary and New Town Boundary. When used with suitable computer software, the digital maps can be used for geographical presentation of the statistical data contained in the 2001 Population Census - TAB on CD-ROM.	840.0	857.0
關於購買以上兩套光碟事宜, 請致電人口統計組 (電話: (852) 2716 8025)。	Please call the Demographic Statistics Section at (852) 2716 8025 for matters relating to the purchase of the above two sets of CD-ROM.		
- 普查易2001 (不定期) 普查易2001人口普查光碟套裝是一套功能強大的知識為本產品, 它能幫助使用者有效地進行客戶資訊分析和客戶關係管理的工作。普查易2001光碟內載有超過400個由政府統計處提供的香港二零零一年人口普查統計表, 分區數碼地圖及功能超卓的地理訊息系統, 當中包含了全香港居民的人口特徵、經濟、教育、住戶、房屋等統計數據, 使用者可以透過簡單和容易使用的功能介面, 來選擇和提取資料。	- Hong Kong CensusPro 2001 (<i>ad hoc</i>) CensusPro 2001 GIS CD-ROM Package is a powerful knowledge-based product that enables users to perform customer profiling and Customer Relationship Management (CRM) easily and efficiently. CensusPro 2001 includes over 400 statistical tables of the Hong Kong 2001 Population Census provided by the Census and Statistics Department, digital boundary maps, and the superb Geographical Information System (GIS) functions and features. Statistical data on the demographic, economic, education, household and housing characteristics of the population are included and can be easily selected and retrieved through intuitive and easy-to-use application interface. CensusPro 2001 provides output in mainly 4 ways: thematic maps, formatted reports, bar/pie charts, and export files in dbf/Excel files/text files. CensusPro 2001 can be used in areas like strategic business/service planning, direct marketing and promotion, customer analysis and profiling, and many other business analysis purposes and applications.		這光碟產品由Info Mapping (Hong Kong) Limited生產及銷售。有關查詢及訂購, 請直接與該公司聯絡。(電話: (852) 2779 6088)。 This CD-ROM is produced and marketed by the Info Mapping (Hong Kong) Limited. For enquiries and purchase, please contact the company direct at (852) 2779 6088.
普查易2001共有4種資料輸出模式: 主題性地圖、預設格式報表、統計圖表、及檔案匯出(支援數據庫/試算表/純文字等格式)。普查易2001光碟可應用於規劃業務策略、直接市場推廣或宣傳、客戶資料分析、以及作其他的商業性分析等。			

名稱	Title	售價不包括	售價連本地
		郵費(港元) Price Not Including Postage (HK\$)	郵費(港元) Price Including Local Postage (HK\$)
(二) 唯讀光碟產品(續)	(B) CD-ROM Products (Cont'd.)		
二零零一年人口普查(續)	2001 Population Census (Cont'd)		
- <i>SUPERMAP Hong Kong 2001 (不定期)</i> • 涵蓋全面的人口普查數據, 配合最新數碼地圖作介面 • 採用具世界領導地位之地理信息系統進行處理及分析 • 可作多重圖像化分析人口普查數據 • 有助機構進行深入的市場及客戶資訊分析	- <i>SUPERMAP Hong Kong 2001 (ad hoc)</i> • Covers comprehensive population census datasets with the use of the latest digital maps as interface • Manipulates and analyses through employing world leading Geographical Information System (GIS) technology • Provides multiple views of population census data • Helps organizations with in-depth market analysis or customer profiling through data linkage) 這些光碟產品由數碼門有限公司生產及銷售, 有關查詢及訂購, 請直接與該公司聯絡 (電話: (852) 2811 0079)。)) These CD-ROMs are produced and marketed by Smartal Solutions Limited. For enquiries and purchase, please contact the company direct at (852) 2811 0079.
對外商品貿易	External Merchandise Trade		
- <i>香港對外商品貿易唯讀光碟</i> 列載過去二 四個月的按月貿易統計數字及過往八年的按年貿易統計數字 (按年數字只載於周年報), 並包括按貨品類別 (《標準國際貿易分類 (第三次修訂版)》或《協調制度》)、國家/地區及運輸方式劃分的詳細貿易統計數字。	- <i>Hong Kong External Merchandise Trade CD-ROM</i> Contains monthly trade data for past 24 months and annual trade data for past 8 years (annual figures are only available in the annual edition). Detailed statistics classified by commodity (using the "Standard International Trade Classification (Revision 3)" or the "Harmonized System"), by country/territory and by mode of transport are also included.))
- <i>香港船務統計唯讀光碟 (按季產品)</i> 列載自一九九三年以來, 按運輸方式、裝運種類、裝貨/卸貨國家/地區及港口、貨品、貨物種類、貨物裝卸地點及與中國內地有關的轉運劃分的貨物及載貨貨櫃吞吐量統計數字。	- <i>Hong Kong Shipping Statistics CD-ROM (quarterly)</i> Contains data back-dated to 1993 on cargo and laden container throughput statistics analysed by mode of transport, shipment type, country/territory and port of loading/discharge, commodity cargo type, cargo handling location and transshipment related to the mainland of China.))

註釋: 除另有註明外, 所有刊物均以中、英文對照形式出版。獲取刊物的方法載於下頁。

Notes: Unless otherwise specified, all publications are published in bilingual format. Means of obtaining the publications are given in the following page.

** 由二零零三年五月號起, 《香港統計月刊》的五個選定章節(目前只提供下載版)可在網上「香港統計數據書店」(網址: <http://www.statisticalbookstore.gov.hk>)購買。有關詳情, 請瀏覽該書店內「《香港統計月刊》的選定章節」一節。

** As from the May 2003 issue, five selected sections of the *Hong Kong Monthly Digest of Statistics*, currently available in softcopy only, can be purchased at the online "Statistical Bookstore, Hong Kong" (Address: <http://www.statisticalbookstore.gov.hk>). For details, please visit the "Selected Sections of Hong Kong Monthly Digest of Statistics (HKMDS)" section of the Bookstore.

++ 分別備有中文版和英文版。

++ Available in separate Chinese and English versions.

+ 祇有英文版。

+ Available in English version only.

期刊的郵費不相同, 請致電政府統計處貿易統計資料發布組查詢(電話: (852) 2582 4917)。

Postage varies among issues, please call the Trade Statistics Dissemination Section of the Census and Statistics Department at (852) 2582 4917.

§ 本刊物的印刷版亦於部分郵局出售(查詢熱線: (852) 2921 2222)。

§ Hardcopy of this publication is also put for sale at selected Post Offices (enquiry hotline: (852) 2921 2222).

所列售價及郵費日後或有修訂。外地郵費將於收到訂購要求後另行通知。

All quoted prices and postages are subject to revision. Postage for external mailings will be advised upon receipt of orders.

有關政府統計處刊物及其他統計產品的最新資料, 請瀏覽本處網站內「產品及服務」一節(網址: http://www.info.gov.hk/censtatd/chinese/prod_serv/index.html)或致電刊物出版組查詢(電話: (852) 2582 3025)。

For up-to-date information of the publications and other statistical products of the Census and Statistics Department, please visit the "Products & Services" section on the website of the department (Address: http://www.info.gov.hk/censtatd/eng/prod_serv/index.html) or call the Publications Unit of the department at (852) 2582 3025.

獲取政府統計處刊物的方法

Means of Obtaining Publications of the Census and Statistics Department

網上銷售服務

互聯網用戶可在「香港統計數據書店」(網址：<http://www.statisticalbookstore.gov.hk>)購買刊物，並即時付款。購買刊物的下載版可即時從網上下載，而購買印刷版則會以郵遞方式送達。用戶亦可於網上安排訂閱期刊或行將出版的刊物。除刊物外，一些較刊物所載統計數據更詳細的統計表亦於網上書店有售。「香港統計數據書店」與其他公共服務集中設於「公共服務電子化」計劃(ESD)的入門網站內(網址：<http://www.esd.gov.hk>)。

由即日起至二零零四年二月二十九日止，在「香港統計數據書店」選購指定刊物，可享有七五折優惠。

郵購服務

大部分政府統計處的刊物均附有郵購表格，供訂購或按期訂閱刊物的印刷版。填妥的郵購表格可連同支付所需費用和郵費的支票或匯票寄回。郵購表格亦可從政府統計處網站下載(網址：http://www.info.gov.hk/censtatd/chinese/prod_serv/forms_index.html)。

銷售中心

香港灣仔港灣道 二號
灣仔政府大樓 九樓
政府統計處刊物出版組
電話：(852) 2582 3025
圖文傳真：(852) 2827 1708

市民可親臨政府統計處刊物出版組購買刊物的印刷版，並可即時提取，或在此訂購刊物或統計表的下載版，然後於網上提取。該組設有一個閱讀區，讓使用者在舒適的環境下翻閱陳列於架上的各類統計處出版的刊物。閱讀區也備有統計處的免費刊物，歡迎索閱。

Online Purchase

Internet users may purchase the publications online at the "Statistical Bookstore, Hong Kong" (Address : <http://www.statisticalbookstore.gov.hk>) with payment made instantly. Softcopies of the publications purchased are available for immediate downloading while hardcopies purchased will be delivered by mail. Subscription to regular publications and advance ordering of upcoming releases are also available. Apart from publications, softcopies of statistical tables containing more detailed statistics than those in publications are also available for sale. The Statistical Bookstore is hosted on the ESD portal (Address : <http://www.esd.gov.hk>) together with other public services.

From now until 29 February 2004, the Statistical Bookstore is offering a special 25% discount on selected publications.

Mail Order Service

A mail order form for ordering or arranging subscription to hardcopies of the publications is available in most publications of the Census and Statistics Department. It may be completed and sent back together with a cheque or bank draft covering all necessary cost and postage. The order form is also available for downloading from the website of the Department (Address : http://www.info.gov.hk/censtatd/eng/prod_serv/forms_index.html).

Sales Centre

Publications Unit
Census and Statistics Department
19/F Wanchai Tower
12 Harbour Road
Wan Chai, Hong Kong
Tel. : (852) 2582 3025
Fax : (852) 2827 1708

Hardcopies of the publications are available for purchase and can be collected on the spot at the Unit. The Unit also accepts orders for softcopies of publications and statistical tables, which will be delivered online. It provides a comfortable reading area where users may browse through various publications of the Department on display. Free publications of the Department are also available for collection.

郵購表格 (只適用於印刷版)⁽¹⁾

致：香港花園道 美利大廈4樓 政府新聞處 刊物銷售小組 電話：(852) 2842 8844 或 (852) 2842 8845 圖文傳真：(852) 2598 7482	售價			請註明 刊期(月份/季/ 期號及年份)		合計 所需的 期數 (b)	總計 (港元) (a) x (b)
	每本 (港元)	本地 郵費 (⁽²⁾ 及 ⁽³⁾) (港元)	合計 (港元) (a)	由	至		
1. 香港統計月刊 (二零零三年期刊) (J470003 B0)	60.0	16.5	76.5	/2003	12/2003		
2. 香港經濟趨勢 (二零零三年期刊) (半月刊) (J410003 B0)	13.0	3.0	16.0	/2003	24/2003		
3. 香港統計年刊 (二零零三年版) (J47010300B0)	74.0	28.0	102.0	-	-		
4. 香港社會及經濟趨勢 (二零零一年版) (雙年刊) (J57290100B0)	84.0	16.4	100.4	-	-		
5. 統計發展概要 (二零零三年版) (年刊) (J33110300B0)	44.0	8.2	52.2	-	-		
6. 香港的發展 (1967-2002) - 統計圖表集 (J69090300B0)	38.0	16.4	54.4	-	-		
7. 二零零三年海外公司駐香港的地區代表 按年統計調查報告 (J69030300B0)	26.0	4.0	30.0	-	-		
8.							
9.							

本人現附上支票 (編號：_____) 港幣 _____ 元，購買上述刊物。
(註：支票應予劃線，並註明支付「香港特別行政區政府」。)

姓名：_____ 職銜：_____

機構名稱：_____ 地址：_____

電話：_____ 圖文傳真：_____

日期：_____

- 註：(1) 如欲訂購或定期訂閱本處出版刊物的下載版，請到網上「香港統計數據書店」
(<http://www.statisticalbookstore.gov.hk>)。
- (2) 外地訂購人士暫時毋須附上支票，所需郵費將於收到訂購要求後另行通知。
- (3) 訂購超過一本相同名稱的年刊或特刊，請向政府新聞處查詢所需本地郵費 (電話：(852) 2842 8844
或 (852) 2842 8845，圖文傳真：(852) 2598 7482)。

你在表格上所提供的資料，只會用作辦理書刊訂購事宜，不會向任何和訂購無關的人士透露。如欲查看或更改所填報的資料，請與政府新聞處刊物銷售小組聯絡。地址：香港花園道美利大廈4樓。



Mail Order Form (Applicable to hardcopies only) ⁽¹⁾

	To : Publications Sales Section Information Services Department 4/F, Murray Building Garden Road Hong Kong Tel. : (852) 2842 8844 or (852) 2842 8845 Fax : (852) 2598 7482	Price			Please indicate Month/Quarter/ Issue no. and Year		Total no. of issue(s) required (b)	Total amount (HK\$) (a) x (b)
		Per copy (HK\$)	Local postage (2) & (3) (HK\$)	Total (HK\$) (a)	From	To		
1.	Hong Kong Monthly Digest of Statistics 2003 issues (J470003 B0)	60.0	16.5	76.5	/2003	12/2003		
2.	Hong Kong Economic Trends 2003 issues (half-monthly) (J410003 B0)	13.0	3.0	16.0	/2003	24/2003		
3.	Hong Kong Annual Digest of Statistics 2003 edition (J47010300B0)	74.0	28.0	102.0	-	-		
4.	Hong Kong Social and Economic Trends 2001 edition (biennial) (J57290100B0)	84.0	16.4	100.4	-	-		
5.	An Outline of Statistical Development 2003 edition (annual) (J33110300B0)	44.0	8.2	52.2	-	-		
6.	A Graphic Guide on Hong Kong's Development (1967-2002) (J69090300B0)	38.0	16.4	54.4	-	-		
7.	Report on 2003 Annual Survey of Regional Offices Representing Overseas Companies in Hong Kong (J69030300B0)	26.0	4.0	30.0	-	-		
8.								
9.								

I enclose a cheque (No. _____) of HK\$ _____ for the payment of the above order. (Note : Please have the cheque crossed and made payable to 'The Government of the Hong Kong Special Administrative Region' or 'The Government of the HKSAR'.)

Name : _____ Title of post : _____

Name of organization : _____ Address : _____

Tel. : _____ Fax : _____

Date : _____

- Notes:
- (1) For ordering or arranging subscription to softcopies, please visit the online "Statistical Bookstore, Hong Kong" (<http://www.statisticalbookstore.gov.hk>).
 - (2) For mailings to addresses outside Hong Kong, please do not send in a cheque now. The required postage will be advised upon receipt of order.
 - (3) For an order of more than one copy of an annual or ad hoc publication with the same title, please consult the Information Services Department about the required local postage. (Tel.: (852) 2842 8844 or (852) 2842 8845, Fax: (852) 2598 7482).

The information provided herein will only be used for processing your order of publications and will not be disclosed to parties which are not involved in the processing. You may seek access to or correction of the information by addressing your request to the Publications Sales Section, *Information Services Department, 4/F, Murray Building, Garden Road, Hong Kong.*





訂閱表格⁽¹⁾
香港統計月刊 (二零零三年期刊)

Subscription Form ⁽¹⁾

Hong Kong Monthly Digest of Statistics (2003 Issues)

致：香港灣仔港灣道 二號
灣仔政府大樓 九樓
政府統計處綜合統計組 (一) 乙
電話：(852)2582 3025 圖文傳真：(852)2827 1708

To：General Statistics Section (1) B,
Census and Statistics Department
19/F., Wanchai Tower,
12 Harbour Road, Wan Chai, Hong Kong.
Tel. : (852) 2582 3025 Fax : (852) 2827 1708

請在適當空格 (□) 內加上 (√) 號。Please tick (√) in the appropriate box (□). (港元 HK\$)

刊物名稱 Title of Publication	每本 售價 Price per copy	每本 本地郵費 Local postage (2) & (3)	每本 合計 Total price (a)	期數 No. of issues (b)	總計 Total amount (a) x (b)
<input type="checkbox"/> 香港統計月刊 二零零三年期刊，一月至 二月 (共 二期) Hong Kong Monthly Digest of Statistics, 2003 January to December 2003 (total 12 issues)	60.0	16.5	76.5	12	918.0
<input type="checkbox"/> 香港統計月刊 二零零三年期刊____月至十二月 (共____期) Hong Kong Monthly Digest of Statistics, 2003 _____ to December, 2003 (total _____ issues)	60.0	16.5	76.5		
<input type="checkbox"/>					
合計 Total					

本人現附上支票 (編號：_____) 港幣 _____ 元，購買上述刊物。
I enclose a cheque (No. _____) of HK\$ _____ for the payment of the above order.

註：支票應予劃線，並註明支付「香港特別行政區政府」。

Note: Cheque should be crossed and made payable to 'The Government of the Hong Kong Special Administrative Region' or 'The Government of the HKSAR'.

訂戶資料 Subscriber's Information

姓名 Name : _____ 機構名稱 Name of organization : _____
職銜 Title of post : _____ 地址 Address : _____
部門 Department : _____
電話 Tel.: _____
圖文傳真 Fax : _____ 日期 Date : _____

機構主要從事業務類別 Major type of business of organization:

- 進出口貿易業 Import/export trade 建造業 Construction
 零售貿易業 Retail trade 金融、保險及地產業 Financing, insurance and real estate
 製造業 Manufacturing 商用服務業 Business services
 教育機構 Educational institution 社區、社會及個人服務業 Community, social and personal services
 其他，請註明 Others, please specify _____

讀者類別 (可選多項) Type of readers (more than one choice allowed):

- 經理 Manager 市場、推廣部人員 Marketing / promotional personnel
 分析員、研究員 Analyst / researcher 教師、大專院校講師 Teaching staff / lecturer
 學生 Student 其他，請註明 Others, please specify _____

訂戶類別 Type of subscriber:

- 機構 Organization 私人 Individual

你是否願意收到本處推廣其他刊物的資料？Do you want to receive promotional materials of other publications of this department ?

- 是 Yes 否 No

HKMDS

註：(1) 只適用於印刷版。如欲定期訂閱下載版，請到網上「香港統計數據書店」(<http://www.statisticalbookstore.gov.hk>)。

Notes: Applicable to hardcopies only. For arranging subscription to softcopies, please visit the online "Statistical Bookstore, Hong Kong" (<http://www.statisticalbookstore.gov.hk>).

(2) 外地訂購人士暫時毋須附上支票，所需郵費將於收到訂購要求後另行通知。

For mailings to addresses outside Hong Kong, please do not send in a cheque now. The required postage will be advised upon receipt of order.

(3) 訂閱超過一本相同名稱及期號的刊物，請向政府新聞處查詢所需本地郵費 (電話：(852) 2842 8844 或 (852) 2842 8845，圖文傳真：(852) 2598 7482)。

For arranging subscription to more than one copy per issue with the same title, please consult the Information Services Department about the required local postage. (Tel.: (852) 2842 8844 or (852) 2842 8845, Fax: (852) 2598 7482).

你在表格上所提供的資料，只會用作辦理書刊訂購事宜，不會向任何和訂購無關的人士透露。如欲查看或更改所填報的資料，請與政府統計處的資料管理人員聯絡。地址：香港灣仔港灣道 二號灣仔政府大樓二 一樓。

The information provided herein will only be used for processing your order of publications and will not be disclosed to parties which are not involved in the subscription of these publications. You may seek access to or correction of the information by addressing your request to the Data Controlling Officer, Census and Statistics Department, 21/F, Wanchai Tower, 12 Harbour Road, Wan Chai, Hong Kong.

資料豐富圖表簡潔 香港發展一目了然

Informative, Easy-to-read, A graphic guide that reviews Hong Kong's development



香港的發展(1967-2002)統計圖表集

A Graphic Guide on Hong Kong's Development (1967-2002)



中華人民共和國
香港特別行政區 政府統計處
Census and Statistics Department
Hong Kong Special Administrative Region
People's Republic of China

一本為政府統計處於
2002年紀念成立
35周年而出版的特刊

A publication dedicated to the
commemoration of the 35th
Anniversary of the Census and
Statistics Department in 2002

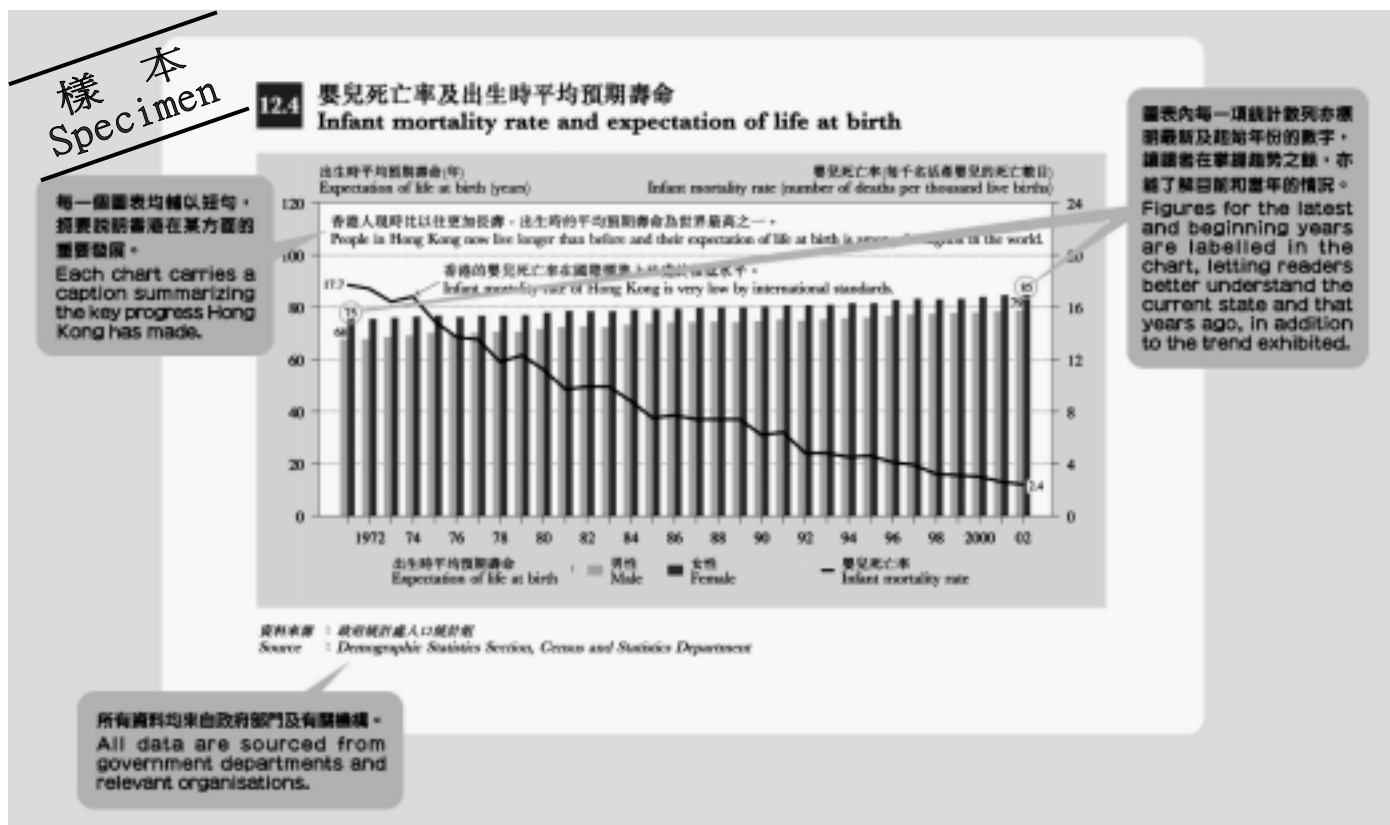
香港的發展 (1967-2002) – 統計圖表集

A Graphic Guide on Hong Kong's Development (1967 – 2002)

備有印刷版及下載版
每本售價\$38

Available in both hardcopy and softcopy
at \$38 per copy

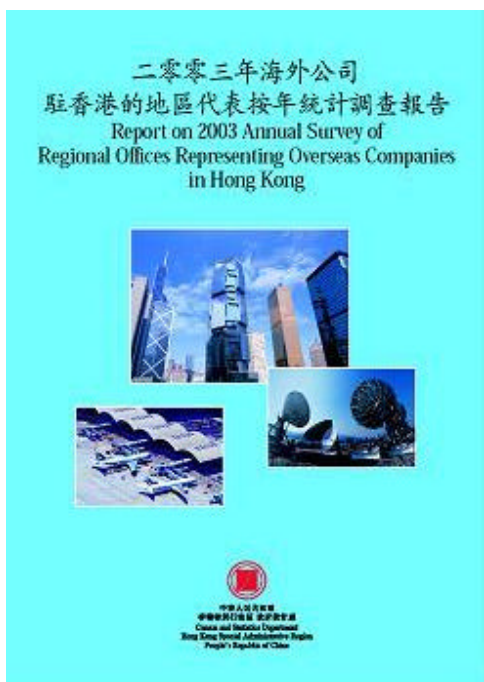
- | | |
|---|--|
| <ul style="list-style-type: none"> ➢ 全書以中、英文對照形式出版，全彩色印刷，分為 16 節，共輯錄了約 140 個統計圖表，記載香港社會在過去 35 年來的變遷，能引發讀者深思香港社會在多個範疇的轉變。 ✓ 人口及生命事件 ✓ 勞工 ✓ 工資及收入 ✓ 國民收入及國際收支平衡 ✓ 對外貿易 ✓ 工商業 ✓ 政府收支、貨幣、金融 ✓ 運輸、通訊及旅遊 | <ul style="list-style-type: none"> ➢ Collecting some 140 statistical charts presented in bilingual format and grouped into 16 sections, this full-colour Graphic Guide provides a fascinating insight into the many changes in the whole fabric of Hong Kong's society over the past 35 year. ✓ Population and Vital Events ✓ Labour ✓ Wages and Earnings ✓ National Income and Balance of Payments ✓ External Trade ✓ Commerce and Industry ✓ Public Accounts, Money and Finance ✓ Transport, Communications and Tourism |
| <ul style="list-style-type: none"> ✓ 消費物價及住戶開支 ✓ 房屋及物業 ✓ 教育 ✓ 衛生 ✓ 社會福利 ✓ 公共秩序及安全 ✓ 環境 ✓ 雜項統計 | <ul style="list-style-type: none"> ✓ Consumer Prices and Household Expenditure ✓ Housing and Property ✓ Education ✓ Health ✓ Social Welfare ✓ Public Order and Safety ✓ The Environment ✓ Miscellaneous |
| <ul style="list-style-type: none"> ➢ 本書所載統計圖表一覽，上載於 http://www.info.gov.hk/censtatd/chinese/graphicguide.html | <ul style="list-style-type: none"> ➢ For a complete list of charts included, please visit http://www.info.gov.hk/censtatd/eng/graphicguide.html |



有關這本統計圖表集的銷售途徑，請參閱本刊物內第A10頁。郵購表格刊載於第A11頁。此外，這本統計圖表集亦於部分郵局出售（查詢熱線：(852) 2921 2222）。如有其他查詢，請致電(852) 2582 4733。

For the purchase channels of this Graphic Guide, please see page A10 of this publication. A mail order form is available on page A12. The Graphic Guide is also put for sale at selected Post Offices (enquiry hotline: (852) 2921 2222). For other enquiries, please call (852) 2582 4733.

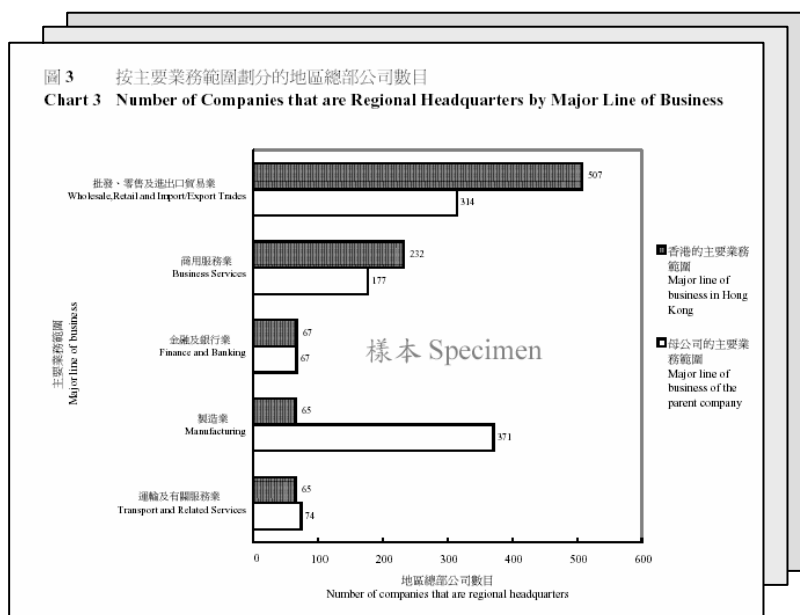
二零零三年海外公司駐香港的地區代表按年統計調查報告 Report on 2003 Annual Survey of Regional Offices Representing Overseas Companies in Hong Kong



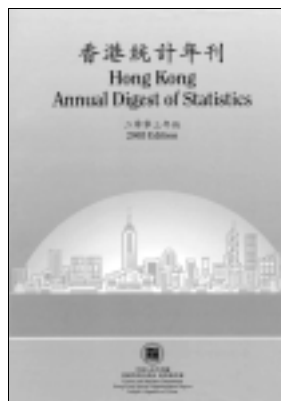
備有印刷版及下載版
每本售價 \$26
現已發售！
Available in both
hardcopy and softcopy
at \$26 per issue!

- ◆ 本刊提供在 2003 年 6 月 2 日香港以外註冊公司駐港的地區總部、地區辦事處及當地辦事處的數目和經濟特性以及地區總部和地區辦事處對以香港作為設立地區總部及地區辦事處地點的利弊意見的綜合統計資料。

- ◆ This publication provides summary statistics on the number and economic characteristics of the regional headquarters, regional offices and local offices in Hong Kong of companies incorporated outside Hong Kong as at 2 June 2003, as well as the views from the regional headquarters and regional offices on the advantages and disadvantages of Hong Kong as a location for setting up regional headquarters and regional offices.



有關刊物的銷售途徑，請參閱本月刊內第A10頁。此外，刊物的郵購表格亦刊載於第A11頁。
For the purchase channels of the publication, please see page A10 of this Digest. A mail order form is also available on page A12 for ordering the publication.



掌握本港各種統計資料 *Holding Hong Kong in Your Hands*

香港統計年刊 (二零零三年版) Hong Kong Annual Digest of Statistics (2003 Edition)

- 載有三百個統計表，所涉及的題材廣泛，包括：
 - 人口及生命事件
 - 勞工
 - 對外貿易
 - 工業生產
 - 商業
 - 科技
 - 土地、樓宇、建造
 - 房屋
 - 運輸、通訊、旅遊
 - 政府收支、貨幣、金融
 - 物價、食物供應
 - 教育
 - 衛生
 - 社會福利
 - 治安
 - 文化、娛樂、康樂
 - 環境、氣候、地理
 - 國民收入及國際收支平衡
 - 提供詳盡按年統計數列，所載大部分數據是以七個年份發表，即最近六年和先前第十一年，以助讀者比較過去十年或每五年期的發展
 - 載有各用語的定義和概念解釋，方便讀者理解有關數據
 - 亦列出相關參考刊物，供讀者作進一步參考
- contains 300 tables, covering a wide range of topics:
 - Population and Vital Events
 - Labour
 - External Trade
 - Industrial Production
 - Commerce
 - Science and Technology
 - Land, Building and Construction
 - Housing
 - Transport, Communications and Tourism
 - Public Accounts, Money and Finance
 - Prices and Food Supplies
 - Education
 - Health
 - Social Welfare
 - Law and Order
 - Culture, Entertainment and Recreation
 - Environment, Climate and Geography
 - National Income and Balance of Payments
 - provides detailed annual statistical series with data presented mostly for seven years, i.e. the most recent six years and the last 11th year, to facilitate comparisons over the past decade or at five-year intervals
 - contains definitions of terms and explanations of concepts to facilitate understanding of the relevant statistics
 - includes also a list of related publications for further reference

新增統計表

二零零三年版加添十八個統計表，所涉及的課題包括科技、勞工、服務業、物業以及貪污和破產情況，讓讀者更能掌握香港近年的發展。

New tables

As from 2003 edition, 18 new tables have been added for understanding better Hong Kong's development in recent years. Topics involved include science and technology, labour, service industries, property, corruption and bankruptcy.

備有印刷版及下載版
每本售價 \$74
現已發售

Available in both
hardcopy and softcopy
at \$74 per copy

香港統計年刊對不同領域的專業人士而言，是一個全面和方便的官方統計資料來源

Hong Kong Annual Digest of Statistics is a comprehensive and convenient source of official statistics for experts in various fields

《香港統計年刊》及其他政府統計處刊物可透過以下途徑購買：

網上銷售服務

互聯網用戶可在「香港統計數據書店」(網址：<http://www.statisticalbookstore.gov.hk>)購買刊物，並即時付款。購買刊物的下載版可即時從網上下載，而購買印刷版則會以郵遞方式送達。用戶亦可於網上安排訂閱期刊或行將出版的刊物。除刊物外，一些較刊物所載統計數據更詳細的統計表亦於網上書店有售。「香港統計數據書店」與其他公共服務集中設於「公共服務電子化」計劃(ESD)的入門網站內(網址：<http://www.esd.gov.hk>)。

由即日起至二零零四年二月二十九日止，在「香港統計數據書店」選購《香港統計年刊》及指定刊物，可享有七五折優惠。

郵購服務

大部分政府統計處的刊物均附有郵購表格，供訂購或按期訂閱刊物的印刷版。填妥的郵購表格可連同支付所需費用和郵費的支票或匯票寄回。郵購表格亦可從政府統計處網站下載(網址：http://www.info.gov.hk/censtatd/chinese/prod_serv/forms_index.html)。

銷售中心

香港灣仔港灣道 二號
灣仔政府大樓 九樓
政府統計處刊物出版組
電話：(852) 2582 3025
圖文傳真：(852) 2827 1708

市民可親臨政府統計處刊物出版組購買刊物的印刷版，並可即時提取，或在此訂購刊物或統計表的下載版，然後於網上提取。該組設有一個閱讀區，讓使用者在舒適的環境下翻閱陳列於架上的各類統計處出版的刊物。閱讀區也備有統計處的免費刊物，歡迎索閱。

The Annual Digest and other publications of the Census and Statistics department can be purchased from the following channels:

Online Purchase

Internet users may purchase the publications online at the "Statistical Bookstore, Hong Kong" (Address : <http://www.statisticalbookstore.gov.hk>) with payment made instantly. Softcopies of the publications purchased are available for immediate downloading while hardcopies purchased will be delivered by mail. Subscription to regular publications and advance ordering of upcoming releases are also available. Apart from publications, softcopies of statistical tables containing more detailed statistics than those in publications are also available for sale. The Statistical Bookstore is hosted on the ESD portal (Address : <http://www.esd.gov.hk>) together with other public services.

From now until 29 February 2004, the Statistical Bookstore is offering a special 25% discount on the Annual Digest and other selected publications.

Mail Order Service

A mail order form for ordering or arranging subscription to hardcopies of the publications is available in most publications of the Census and Statistics Department. It may be completed and sent back together with a cheque or bank draft covering all necessary cost and postage. The order form is also available for downloading from the website of the Department (Address : http://www.info.gov.hk/censtatd/eng/prod_serv/forms_index.html).

Sales Centre

Publications Unit, Census and Statistics Department
19/F Wanchai Tower
12 Harbour Road
Wan Chai, Hong Kong
Tel. : (852) 2582 3025
Fax : (852) 2827 1708

Hardcopies of the publications are available for purchase and can be collected on the spot at the Unit. The Unit also accepts orders for softcopies of publications and statistical tables, which will be delivered online. It provides a comfortable reading area where users may browse through various publications of the Department on display. Free publications of the Department are also available for collection.

除上述外，本刊物亦於部分郵局出售 (查詢熱線：(852) 2921 2222)。

Apart from the above, this publication is also put for sale at selected Post Offices (enquiry hotline: (852) 2921 2222).



郵購表格⁽¹⁾
香港統計年刊（二零零三年版）

致：香港灣仔港灣道十二號灣仔政府大樓十九樓
政府統計處綜合統計組（一）乙
（電話：(852) 2582 3025，圖文傳真：(852) 2827 1708）

請在適當空格 (□) 內加上 (√) 號。

(港元)

刊物名稱	每本售價	每本本地郵費 (2) & (3)	每本合計 (a)	數目 (b)	總計 (a) x (b)
<input type="checkbox"/> 香港統計年刊（二零零三年版） (J47010300B0)	74.0	28.0	102.0		
<input type="checkbox"/>					
合計					

本人現附上支票（編號：_____）港幣 _____ 元，購買上述刊物。（註：支票應予劃線，並註明支付「香港特別行政區政府」。）

訂戶資料

姓名：_____ 地址：_____
職銜：_____
部門：_____
機構名稱：_____ 電話：_____ 圖文傳真：_____
日期：_____

機構主要從事業務類別：

- 進出口貿易業 建造業 零售貿易業
 金融、保險及地產業 製造業 商用服務業
 教育機構 社區、社會及個人服務業 其他，請註明 _____

讀者類別（可選多項）：

- 經理 分析員、研究員 市場、推廣部人員
 教師、大專院校講師 學生 其他，請註明 _____

訂戶類別：

- 機構 私人

你是否願意收到本處推廣其他刊物的資料？

- 是 否

MDS

- 註：(1) 只適用於印刷版。如欲訂購下載版，請到網上「香港統計數據書店」(<http://www.statisticalbookstore.gov.hk>)。
(2) 外地訂購人士暫時毋須附上支票，所需郵費將於收到訂購要求後另行通知。
(3) 訂購超過一本年刊，請向政府新聞處查詢所需本地郵費（電話：(852) 2842 8844 或 (852) 2842 8845，圖文傳真：(852) 2598 7482）。

你在表格上所提供的資料，只會用作辦理書刊訂購事宜，不會向任何和訂購無關的人士透露。如欲查看或更改所填報的資料，請與政府統計處的資料管理人員聯絡。地址：香港灣仔港灣道十二號灣仔政府大樓二十一樓。



Mail Order Form ⁽¹⁾ Hong Kong Annual Digest of Statistics 2003 Edition

To : General Statistics Section (1) B, Census and Statistics Department
19/F., Wanchai Tower, 12 Harbour Road, Wan Chai, Hong Kong.
(Tel. : (852) 2582 3025, Fax : (852) 2827 1708)

Please tick (✓) in the appropriate box (□).

(HK\$)

	Title of Publication	Price per copy	Local postage (2) & (3)	Total price (a)	No. of copies (b)	Total amount (a) x (b)
<input type="checkbox"/>	Hong Kong Annual Digest of Statistics 2003 Edition (J47010300B0)	74.0	28.0	102.0		
<input type="checkbox"/>						
TOTAL						

I enclose a cheque (No. _____) of HK\$ _____ for the payment of the above order.
(Cheque should be crossed and made payable to 'The Government of the Hong Kong Special Administrative Region' or 'The Government of the HKSAR'.)

Purchaser's Information

Name : _____ Address : _____

Title of Post : _____

Department : _____

Name of Organization : _____ Tel. : _____ Fax : _____

Date : _____

Major type of business of organization :

- | | | |
|---|--|--|
| <input type="checkbox"/> Import/export trade | <input type="checkbox"/> Construction | <input type="checkbox"/> Retail trade |
| <input type="checkbox"/> Financing, insurance and real estate | <input type="checkbox"/> Manufacturing | <input type="checkbox"/> Business services |
| <input type="checkbox"/> Educational institution | <input type="checkbox"/> Community, social and personal services | |
| <input type="checkbox"/> Others, please specify _____ | | |

Type of readers (more than one choice allowed) :

- | | | |
|--|---|--|
| <input type="checkbox"/> Manager | <input type="checkbox"/> Analyst / researcher | <input type="checkbox"/> Marketing / promotional personnel |
| <input type="checkbox"/> Teaching staff / lecturer | <input type="checkbox"/> Student | <input type="checkbox"/> Others, please specify _____ |

Type of purchaser :

- Organization Individual

Do you want to receive promotional materials of other publications of this department?

- Yes No

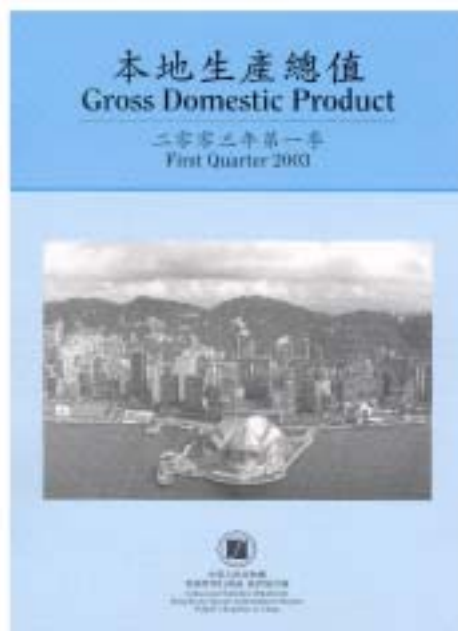
MDS

- Notes: (1) Applicable to hardcopies only. For ordering softcopies, please visit the online "Statistical Bookstore, Hong Kong" (<http://www.statisticalbookstore.gov.hk>).
- (2) For mailings to addresses outside Hong Kong, please do not send in a cheque now. The required postage will be advised upon receipt of order.
- (3) For an order of more than one copy, please consult the Information Services Department about the required local postage. (Tel.: (852) 2842 8844 or (852) 2842 8845, Fax: (852) 2598 7482).

The information provided herein will only be used for processing your order of publications and will not be disclosed to parties which are not involved in the subscription of these publications. You may seek access to or correction of the information by addressing your request to the Data Controlling Officer, Census and Statistics Department, 21/F, Wanchai Tower, 12 Harbour Road, Wan Chai, Hong Kong.

本地生產總值按季報告 (二零零三年期刊)

Quarterly report of Gross Domestic Product (2003 Issues)



備有印刷版及下載版
每本售價\$30
現已發售！

Available in both
hardcopy and softcopy
at \$30 per issue!

本地生產總值是量度香港經濟表現的重要指標，本季刊內容包括香港的經濟概況，並載錄下列最新數字：

- 按開支組成部分劃分的本地生產總值
- 按經濟活動劃分的本地生產總值
- 本地居民生產總值

GDP is an important indicator of the performance of the Hong Kong economy. The quarterly report covers the general observations of Hong Kong's economy, and also contains the latest figures on :

- Gross Domestic Product by expenditure component
- Gross Domestic Product by economic activity
- Gross National Product

有關刊物的銷售途徑，請參閱本月刊內第A10頁。此外，刊物的訂閱表格亦刊載於下頁。
For the purchase channels of the publication, please see page A10 of this Digest. A subscription form is also available on the following page for ordering the publication.



訂閱表格⁽¹⁾
本地生產總值按季報告(二零零三年期刊)
Subscription Form⁽¹⁾
Quarterly report of Gross Domestic Product (2003 Issues)

致：香港灣仔港灣道十二號灣仔政府大樓二十二樓
 政府統計處國民收入統計組（一）—
 （電話：（852）2582 5077 傳真：（852）2157 9295）

To : National Income Section (1)1
 Census and Statistics Department
 22/F, Wanchai Tower, 12 Harbour Road
 Wan Chai, Hong Kong
 (Tel. : (852) 2582 5077, Fax : (852) 2157 9295)

請在適當空格 (□) 內加上 (√) 號。 Please tick (√) in the appropriate box (□)

	刊期 Issue	刊物出版日期 Date of publication	每本售價 Price per copy	每本本地郵費 Local postage (2) & (3)	每本合計 Total price (a)	本數 No. of copies (b)	總計 Total amount (a) x (b)
<input type="checkbox"/>	二零零三年第一季 First Quarter 2003 (J35730301B0)	二零零三年五月 May 2003	30.0	4.5	34.5		
<input type="checkbox"/>	二零零三年第二季 Second Quarter 2003 (J35730302B0)	二零零三年八月 August 2003	30.0	4.5	34.5		
<input type="checkbox"/>	二零零三年第三季 Third Quarter 2003 (J35730303B0)	二零零三年十一月 November 2003	30.0	4.5	34.5		
<input type="checkbox"/>	二零零三年第四季 Fourth Quarter 2003 (J35730304B0)	二零零四年三月 March 2004	30.0	4.5	34.5		
合計 Total :							

本人現附上支票（編號：_____）港幣_____元，購買上述刊物。（註：支票應予劃線，並註明支付「香港特別行政區政府」。）

I enclose a cheque (No. _____) of HK\$ _____ for the payment of the above order. (Cheque should be crossed and made payable to 'The Government of the Hong Kong Special Administrative Region' or 'The Government of the HKSAR'.)

訂戶資料 Subscriber's Information

姓名 Name : _____ 機構名稱 Name of Organization : _____
 職銜 Title of post : _____ 地址 Address : _____
 部門 Department : _____
 電話 Tel. No. : _____
 傳真 Fax No. : _____ 日期 Date : _____

機構主要從事業務類別 Major type of business of organization :

- | | |
|---|--|
| <input type="checkbox"/> 進出口貿易業 Import/export trade | <input type="checkbox"/> 建造業 Construction |
| <input type="checkbox"/> 零售貿易業 Retail trade | <input type="checkbox"/> 金融、保險及地產業 Financing, insurance and real estate |
| <input type="checkbox"/> 製造業 Manufacturing | <input type="checkbox"/> 商用服務業 Business services |
| <input type="checkbox"/> 教育機構 Educational institution | <input type="checkbox"/> 社區、社會及個人服務業 Community, social and personal services |
| <input type="checkbox"/> 其他 Others (請註明 Please specify) : _____ | |

讀者類別 Type of readers (可選多項 more than one choice allowed) :

- | | |
|---|---|
| <input type="checkbox"/> 經理 Manager | <input type="checkbox"/> 市場、推廣部人員 Marketing / promotional personnel |
| <input type="checkbox"/> 分析員、研究員 Analyst / researcher | <input type="checkbox"/> 教師、大專院校講師 Teaching staff / lecturer |
| <input type="checkbox"/> 學生 Student | <input type="checkbox"/> 其他 Others (請註明 Please specify) : _____ |

訂戶類別 Type of subscriber :

- 機構 Organization 私人 Individual

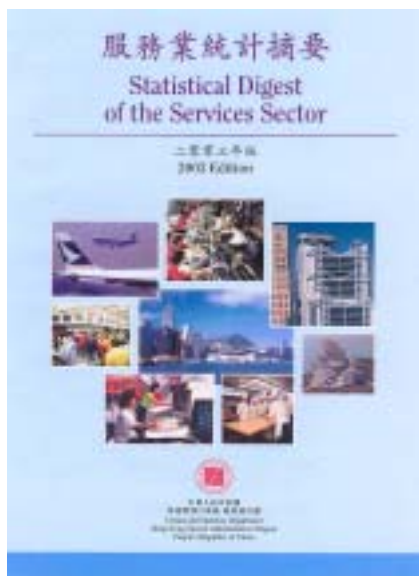
你是否願意收到本處推廣其他刊物的資料？ Do you want to receive promotional materials of other publications of this department?

- 是 Yes 否 No

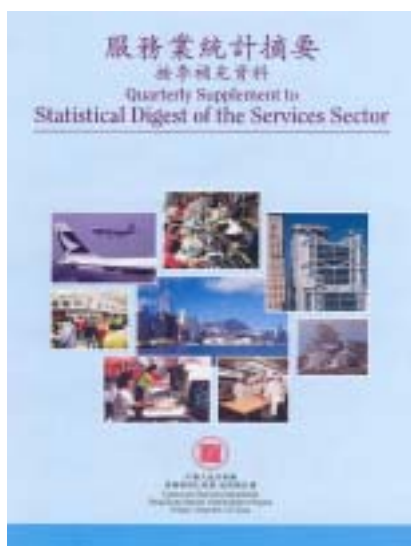
註：(1) 只適用於印刷版。如欲定期訂閱下載版，請到網上「香港統計數據書店」(http://www.statisticalbookstore.gov.hk)。
 Note : Applicable to hardcopies only. For arranging subscription to softcopies, please visit the online "Statistical Bookstore, Hong Kong" (http://www.statisticalbookstore.gov.hk).
 (2) 外地訂購人士暫時毋須附上支票，所需郵費將於收到訂購要求後另行通知。
 For mailings to addresses outside Hong Kong, please do not send in a cheque now. The required postage will be advised upon receipt of order.
 (3) 訂購超過一本相同期號的刊物，請向政府新聞處查詢所需本地郵費(電話：(852) 2842 8844 或(852) 2842 8845，圖文傳真：(852) 2598 7482)。
 For arranging subscription to more than one copy, please consult the Information Services Department about the required local postage. (Tel.: (852) 2842 8844 or (852) 2842 8845, Fax: (852) 2598 7482).

你在表格上所提供的資料，只會用作辦理書刊訂購事宜，不會向任何和訂購無關的人士透露。如欲查看或更改所填報的資料，請與政府統計處的資料管理人員聯絡。地址：香港灣仔港灣道十二號灣仔政府大樓二十一樓。
 The information provided herein will only be used for processing your order of publications and will not be disclosed to parties which are not involved in the subscription of these publications. You may seek access to or correction of the information by addressing your request to the Data Controlling Officer, Census and Statistics Department, 21/F, Wanchai Tower, 12 Harbour Road, Wan Chai, Hong Kong.

《服務業統計摘要》 / 《服務業統計摘要按季補充資料》
*Statistical Digest of the Services Sector / Quarterly
Supplement to Statistical Digest of the Services Sector*



- 二零零三年版《服務業統計摘要》匯集了香港十四個主要服務行業 / 界別的主要統計數字，包括機構單位數目、就業人數、業務收益指數、生產總額、增加價值及其他與該行業 / 界別相關的數據。
- 本刊登載一九九二年至二零零二年的統計資料，大致上以六個年份的時間數列依每年年底的數字顯示，並在適當之處輔以二零零二年第四季的數字
- The 2003 Edition of *Statistical Digest of the Services Sector* brings together in one volume some of the important statistical series, including number of establishments and persons engaged, business receipts index, gross output, value added and other industry/domain specific statistics on the fourteen major service industries/domains of Hong Kong.
- The *Digest* provides statistical data for the period from 1992 to 2002, in the form of six yearly figures as at the year-end position in the main, and where appropriate supplemented with statistics for the fourth quarter of 2002.



- 《服務業統計摘要按季補充資料》提供在《服務業統計摘要》內刊載的香港十四個主要服務行業 / 界別的一些最新按季統計數字。
- 本刊同時刊載專題文章，分析有關服務行業 / 界別的統計數字，以及闡述有關的統計方法。
- The *Quarterly Supplement to Statistical Digest of the Services Sector* provides some up-to-date quarterly statistics on the 14 major service industries/domains of Hong Kong presented in the *Statistical Digest of the Services Sector*.
- The publication also contains feature articles that analyse statistics of interest and present methodological materials of relevance to the service industries/domains.

二零零三年系列現可訂閱

有關本刊物的查詢，請聯絡：
政府統計處
莊士紅磡廣場分處
經銷及服務業統計科(二)
香港九龍紅磡蕪湖街八十三號
莊士紅磡廣場二十樓
電話：(852) 2123 1038
傳真：(852) 2123 1048
電子郵遞：services@censtatd.gov.hk

2003 Series available for subscription now

Enquiries on this publication can be directed to：
Distribution and Services Statistics Branch (2)
Census and Statistics Department
Chuang's Hung Hom Plaza Sub-office
20/F, 83 Wuhu Street, Hung Hom,
Kowloon, Hong Kong.
Tel. No.: (852) 2123 1038
Fax. No.: (852) 2123 1048
E-mail：services@censtatd.gov.hk

有關刊物的銷售途徑，請參閱本刊內第A10頁。此外，刊物的訂閱表格亦刊載於下頁。
*For the purchase channels for the publication, please see page A10 of this Digest. A mail
subscription form is also available on next page for ordering the publication.*



訂閱表格⁽¹⁾
服務業統計摘要 / 服務業統計摘要按季補充資料 (二零零三年期刊)
Subscription Form⁽¹⁾
Statistical Digest of the Services Sector / Quarterly Supplement to Statistical Digest of the Services Sector (2003 Issues)

致：政府統計處經銷及服務業統計科(二)
 香港九龍紅磡蕪湖街八十三號
 莊士紅磡廣場二十樓
 電話：(852) 2123 1038 傳真：(852) 2123 1048

To: Distribution and Services Statistics Branch (2),
 Census and Statistics Department
 20/F, 83 Wuhu Street,
 Hung Hom, Kowloon, Hong Kong
 Tel. No.: (852) 2123 1038 Fax. No.: (852) 2123 1048

請在適當空格 (□) 內加上 (√) 號。Please tick (√) in the appropriate box (□). (港元 HK\$)

刊物名稱 Title of Publication	每本 售價 Price per copy	每本 本地郵費 Local postage (2) & (3)	每本 合計 Total price (a)	本數 No. of copies (b)	總計 Total amount (a) x (b)
<input type="checkbox"/> 二零零三年版 2003 Edition (J68010300B0)	94.0	16.4	110.4		
<input type="checkbox"/> 二零零三年第一季 First Quarter 2003 (J68000301B0)	65.0	9.0	74.0		
<input type="checkbox"/> 二零零三年第二季 Second Quarter 2003 (J68000302B0)	65.0	9.0	74.0		
<input type="checkbox"/> 二零零三年第三季 Third Quarter 2003 (J68000303B0)	65.0	9.0	74.0		
合計 Total					

本人現附上支票 (編號：_____) 港幣 _____ 元，購買上述刊物。
 I enclose a cheque (No. _____) of HK\$ _____ for the payment of the above order.

註：支票應予劃線，並註明支付「香港特別行政區政府」。

Note: Cheque should be crossed and made payable to 'The Government of the Hong Kong Special Administrative Region' or 'The Government of the HKSAR'.

訂戶資料 Subscriber's Information

姓名 Name: _____ 機構名稱 Name of organization: _____
 職銜 Title of post: _____ 地址 Address: _____
 部門 Department: _____
 電話 Tel.: _____
 圖文傳真 Fax: _____ 日期 Date: _____

機構主要從事業務類別 Major type of business of organization:

- | | |
|--|--|
| <input type="checkbox"/> 進出口貿易業 Import/export trade | <input type="checkbox"/> 建造業 Construction |
| <input type="checkbox"/> 零售貿易業 Retail trade | <input type="checkbox"/> 金融、保險及地產業 Financing, insurance and real estate |
| <input type="checkbox"/> 製造業 Manufacturing | <input type="checkbox"/> 商用服務業 Business services |
| <input type="checkbox"/> 教育機構 Educational institution | <input type="checkbox"/> 社區、社會及個人服務業 Community, social and personal services |
| <input type="checkbox"/> 其他，請註明 Others, please specify _____ | |

讀者類別 (可選多項) Type of readers (more than one choice allowed):

- | | |
|---|---|
| <input type="checkbox"/> 經理 Manager | <input type="checkbox"/> 市場、推廣部人員 Marketing / promotional personnel |
| <input type="checkbox"/> 分析員、研究員 Analyst / researcher | <input type="checkbox"/> 教師、大專院校講師 Teaching staff / lecturer |
| <input type="checkbox"/> 學生 Student | <input type="checkbox"/> 其他，請註明 Others, please specify _____ |

訂戶類別 Type of subscriber:

- 機構 Organization 私人 Individual

你是否願意收到本處推廣其他刊物的資料? Do you want to receive promotional materials of other publications of this department?

- 是 Yes 否 No

註：(1) 只適用於印刷版。如欲定期訂閱下載版，請到網上「香港統計數據書店」(<http://www.statisticalbookstore.gov.hk>)。
 Notes: Applicable to hardcopies only. For arranging subscription to softcopies, please visit the online "Statistical Bookstore, Hong Kong" (<http://www.statisticalbookstore.gov.hk>).

(2) 外地訂購人士暫時毋須附上支票，所需郵費將於收到訂購要求後另行通知。
 For mailings to addresses outside Hong Kong, please do not send in a cheque now. The required postage will be advised upon receipt of order.

(3) 訂閱超過一本相同名稱及期號的刊物，請向政府新聞處查詢所需本地郵費 (電話：(852) 2842 8844 或 (852) 2842 8845，圖文傳真：(852) 2598 7482)。

For arranging subscription to more than one copy per issue with the same title, please consult the Information Services Department about the required local postage. (Tel.: (852) 2842 8844 or (852) 2842 8845, Fax: (852) 2598 7482).

你在表格上所提供的資料，只會用作辦理書刊訂購事宜，不會向任何和訂購無關的人士透露。如欲查看或更改所填報的資料，請與政府統計處的資料管理人員聯絡。地址：香港灣仔港灣道二號灣仔政府大樓二一樓。

The information provided herein will only be used for processing your order of publications and will not be disclosed to parties which are not involved in the subscription of these publications. You may seek access to or correction of the information by addressing your request to the Data Controlling Officer, Census and Statistics Department, 21/F, Wanchai Tower, 12 Harbour Road, Wan Chai, Hong Kong.

政府統計處網站 The C&SD Website

請到
Please visit <http://www.info.gov.hk/censtatd/>



網站特色 Key Features

香港統計資料 Hong Kong Statistics



最新香港統計
資料及圖表
Latest Hong Kong
statistics and charts

政府統計處簡介 About C&SD



產品及服務 Products & Services



連結到國際組織及
外地官方統計機構
Links to international
organizations and other
statistical authorities

新聞稿 Press Releases



統計數據新聞稿在公布當天
下午 5 時前在網站內看到
Press releases available by 5:00 p.m.
on the date of release

相關網頁 Web Links



服務台 Service Desk

電子郵件查詢及聯絡
E-mail enquiries & contact



專業統計
We Provide Quality Statistics



服務市民
We Serve the Community