

# 香港統計月刊

## **Hong Kong Monthly Digest of Statistics**

二零零三年十二月  
December 2003

專題文章  
*Feature Article*

至二零三一年的香港家庭住戶推算

Hong Kong Domestic Household Projections up to 2031

## 至二零三一年的香港家庭住戶推算 Hong Kong Domestic Household Projections up to 2031

政府統計處現已編製一套至二零三一年的家庭住戶數目、平均住戶人數及家庭住戶人數分布的推算。這篇文章簡述推算的方法及列載推算的結果。

The Census and Statistics Department has compiled a set of projections up to 2031 on the number of domestic households, average household size and domestic household size distribution. This article gives a brief account of the projection method and presents the projection results.

如對本文有任何查詢，請致電政府統計處人口統計組（電話：2716 8044）。

If you have any enquiries on this article, please call Demographic Statistics Section, Census and Statistics Department (Tel.: 2716 8044).

# 至二零三一年的香港家庭住戶推算

## Hong Kong Domestic Household Projections up to 2031

### 1. 引言

1.1 家庭住戶是各類服務及商品的消費單位，推算未來的家庭住戶數目及其按住戶人數的分布是規劃的重要參數。

1.2 這篇文章展示運用「戶主率」方法去推算至二零三一年的家庭住戶數目及其按住戶人數的分布。

### 2. 定義

#### 人口

2.1 編製人口估計的「居住人口」方法於二零零零年八月採用和公布，以取代以前使用的「廣義時點」方法。「居住人口」方法較「廣義時點」方法更為合適地反映近年香港人口的居住及流動形態的轉變。

2.2 「居住人口」的概念在國際統計標準中是清晰的，但各地應用的具體定義並不一致，而需要充份考慮各個地方獨特的人口居住及流動形態。國際統計機構特別指出由於工商業及社會的發展，一些國家／地區的居民，「流動性」相當高，處理這些國家／地區的人口統計時，有關當局要深入考慮這類情況。

2.3 以香港而言，研究結果顯示香港的「居住人口」（我們稱為「居港人口」）定義應該包括「常住居民」和「流動居民」。

### 1. Introduction

1.1 As domestic households are consumption units for various services and goods, the projected number of domestic households and their distribution by household size in the future are important parameters for various planning applications.

1.2 This article presents the projections of the total number of domestic households and their distribution by household size up to 2031. The projection exercise has been performed using the “headship rate” method.

### 2. Definition

#### Population

2.1 The “resident population” method for compiling population estimates was introduced and announced in August 2000 to replace the “extended de facto” method previously used. The “resident population” method is considered more appropriate than the “extended de facto” method in reflecting changes in the residency and mobility patterns of the Hong Kong Population in recent years.

2.2 “Resident population” is a clear-cut concept in international statistical standard but the practical definitions adopted vary from place to place, as the residency and mobility patterns unique to each place need to be given adequate consideration. International statistical organizations have pointed out in particular that, owing to business and social development, the “mobility” of residents of certain countries/territories is rather high. In handling the population statistics of these countries/territories, the appropriate authorities should consider the situation in depth.

2.3 In the case of Hong Kong, studies have shown that the “resident population” of Hong Kong (which we refer to as the “Hong Kong Resident Population”) should be defined to include “Usual Residents” and “Mobile Residents”.

2.4 考慮到概念和可用數據等方面的問題，「常住居民」的技術定義包括兩類人士：（一）在統計時點之前的六個月內，在港逗留最少三個月，又或在統計時點之後的六個月內，在港逗留最少三個月的香港永久性居民，不論在統計時點他們是否身在香港；及（二）在統計時點身在香港的香港非永久性居民。

2.5 至於「流動居民」，是指在統計時點之前的六個月內，在港逗留最少一個月但少於三個月，又或在統計時點之後的六個月內，在港逗留最少一個月但少於三個月的香港永久性居民，不論在統計時點他們是否身在香港。

2.6 有關「居港人口」、「常住居民」及「流動居民」定義及具體涵蓋範圍的較詳細闡釋，可參考本月刊在二零零二年二月版刊載的《香港人口估計的編製》文章內的相關段落。

### 住戶

2.7 住戶是指一群住在一起一同分享膳食的社會及經濟單位。在同一屋宇單位住在一起及分享生活所需的人士為同一住戶的成員。因此，若一個人和另一家庭分享居所，可是他負責自己的膳食及生活開支，他是被界定為一人住戶。「家庭」及「住戶」是兩種不同的社會單位。組成家庭的人士通常有婚姻、血緣或領養的關係。大多情況下「家庭」和「住戶」都是相同的，但事實上，因為家庭成員未必有親屬關係，「家庭」和「住戶」有時並不相同。

2.4 In consideration of issues relating to concepts and availability of data, the technical definition of the “Usual Residents” would include two categories of people: (1) Hong Kong Permanent Residents who have stayed in Hong Kong for at least three months during the six months before or for at least three months during the six months after the reference time-point, regardless of whether they are in Hong Kong or not at the reference time-point; and (2) Hong Kong Non-permanent Residents who are in Hong Kong at the reference time-point.

2.5 As for “Mobile Residents”, they are Hong Kong Permanent Residents who have stayed in Hong Kong for at least one month but less than three months during the six months before or for at least one month but less than three months during the six months after the reference time-point, regardless of whether they are in Hong Kong or not at the reference time-point.

2.6 For more detailed explanations regarding the definition and practical coverage of the Hong Kong Resident Population, Usual Residents and Mobile Residents, please refer to relevant paragraphs in the article “Compiling Population Estimates of Hong Kong” published in the February 2002 issue of this Digest.

### Households

2.7 Household is a socio-economic unit consisting of individuals who share the living quarters and meals. Persons who make common provisions for essentials for living inside a unit of quarters are regarded as members of the same household. Thus, a person who shares his quarters with another family but cooks his own meals and keeps his own account of household expenses is regarded as a one-person household. “Family” and “household” are different social units. People forming a family are related either by marriage, kinship or adoption. Most often a family coincides with a household but the two may, in effect, differ because members of the same household need not be related.

2.8 住戶可分為「家庭住戶」和「非家庭住戶」兩類。家庭住戶包括一群住在一起分享食物及生活開支的人士，而他們之間不一定有親戚關係。非家庭住戶包括居於大型居所（例如老人院，醫院及工廠的員工宿舍）及不屬於香港家庭住戶的流動居民。

2.9 家庭住戶推算的集中點在家庭住戶，非家庭住戶不包括在推算內。

#### 家庭住戶戶主

2.10 當家庭住戶包括多人，其中一人會被認定為戶主，其他人則被視為住戶成員。在過去的人口普查／中期人口統計，家庭住戶的戶主是住戶成員所認同的住戶的重要決策人。

2.11 因為每個家庭住戶有一個戶主，戶主數目及家庭住戶數目是可以互換的。這種關聯對分析戶主率及推算家庭住戶數目至為重要。

#### 戶主率

2.12 戶主率是按年齡及性別劃分的家庭住戶人口中戶主的比例。通常用百分比表示。如果 $x$ 代表年齡， $y$ 代表性別及 $t$ 代表年份，戶主率 $h(x,y,t)$ 就是

$$h(x,y,t) = \frac{H(x,y,t)}{P(x,y,t)}$$

而 $H(x,y,t)$ 是年齡 $x$ 、性別 $y$ 及年份 $t$ 居於家庭住戶的戶主數目及 $P(x,y,t)$ 是年齡 $x$ 、性別 $y$ 及年份 $t$ 居於家庭住戶的人數。

2.8 Households can be distinguished into domestic and non-domestic households. Domestic households consist of people living under the same roof, whether related or not, and sharing food and expenses. Non-domestic households mainly consist of people living in institutions (such as homes for the aged, infirmaries, and staff quarters of factories) and Mobile Residents who do not belong to domestic households in Hong Kong.

2.9 The main focus of the domestic household projections is on domestic households. Non-domestic households are not covered in the projection.

#### Domestic household heads

2.10 When a domestic household contains several persons, one of them will be regarded as the household head while the others are members. In the past population censuses/by-censuses, household head is defined as a person acknowledged as such by other members of the household to be responsible for making major decisions affecting the household.

2.11 Bearing in mind that there is one head for each domestic household, the number of domestic household heads can be interchanged with the number of domestic households. Such linkage is fundamental to analysing and projecting domestic households using the headship rate method.

#### Headship rate

2.12 Headship rate denotes a ratio of the number of domestic household heads by age and sex to the corresponding categories of domestic population, usually expressed as a percentage. Algebraically, headship rate for age  $x$ , sex  $y$  and year  $t$ ,  $h(x,y,t)$ , is defined as

$$h(x,y,t) = \frac{H(x,y,t)}{P(x,y,t)}$$

where  $H(x,y,t)$  is the number of household heads of age  $x$ , sex  $y$  and year  $t$  residing in domestic households and  $P(x,y,t)$  is the number of persons of age  $x$ , sex  $y$  and year  $t$  residing in domestic households.

### 3. 方法

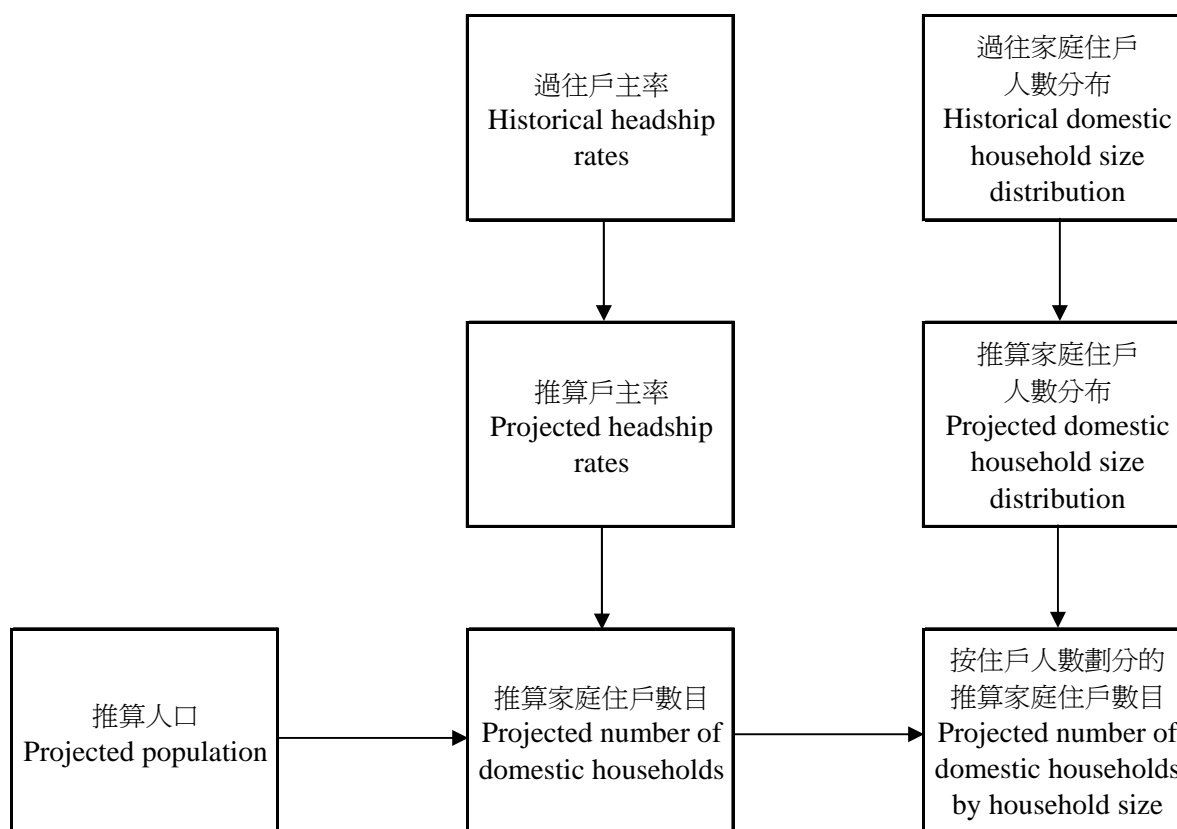
3.1 家庭住戶數目的推算採用「戶主率」的方法。推算的計算方法如圖一所示。

### 3. Methodology

3.1 The “headship rate” method is adopted for the household projections. The framework of household projections is shown in Figure 1.

圖一 家庭住戶數目推算架構

Figure 1 Framework of Domestic Household Projections



3.2 推算家庭住戶的數目是由推算的戶主率乘以推算人口（數字來自《香港人口推算 2002-2031》）。戶主率是根據過去人口普查／中期人口統計的數據而推算。家庭住戶推算是以「生命週期」的統計模型為基礎。這模型建基於在某年齡的戶主率隨著時間而平穩地轉變。雖然過去的戶主率是以人口普查／中期人口統計時刻為時間基準，使用生命週期模型時會作出調整，使推算的戶主率以年中時點為參照基準。

3.2 The projected number of domestic households is calculated by multiplying the projected population (which is available from “Hong Kong Population Projections 2002-2031”) by the projected headship rates. Headship rates are projected from the historical data from the past population censuses/by-censuses. A “life cycle” model forms the basis of the household projections. This model makes use of the fact that the headship rates in a particular cohort will vary smoothly with time. While the historical headship rates refer to the population census/by-census moments, adjustments are made in the life-cycle model so that the projected headship rates refer to the mid-year time-points.

3.3 按住戶人數劃分的家庭住戶數目是用推算的家庭住戶數目乘以推算的按住戶人數的分布。按住戶人數劃分的百分比分布是使用線性回歸或外推過去的趨勢推算而得出。由於所有百分比相加等於一，而其加權平均等於平均住戶人數，住戶人數的分布使用一個特別的程式「最少平方調整」來加以改良。

3.3 The projected number of domestic households by household size is calculated by multiplying the projected number of domestic households by the projected household size distribution. The percentage distribution for each household size is projected separately using linear regression or simple trend extrapolation. Since the percentage must add up to unity and the weighted average must equal to the average household size, a special algorithm called the least squares adjustment is developed to fine-tune the household size distribution.

## 4. 結果

## 4. Results

### 過往趨勢

### Historical trend

4.1 家庭住戶的人口由一九八一年的489萬上升至二零零一年的654萬，增幅為34%。同時，家庭住戶數目由一九八一年的124萬上升至二零零一年的205萬，增幅為65%。根據二零零二年五月至七月及二零零三年五月至七月期間進行的綜合住戶統計調查結果編製而成的家庭住戶數目分別為214萬及218萬。由於家庭住戶數目的增長較人口為快，因此平均住戶人數相對地由一九八一年的3.9下降至二零零一年的3.1。（表一）

4.1 Population in domestic households increased from 4.89 million in 1981 to 6.54 million in 2001, showing an increase of 34% over the period. Concurrently, the number of domestic households grew from 1.24 million in 1981 to 2.05 million in 2001, representing an increase of 65%. The number of domestic households in May–July 2002 and May–July 2003, compiled from the results of General Household Survey (GHS) were 2.14 million and 2.18 million respectively. The growth in domestic households was faster than that of the population, leading to a declining trend of average household size, from 3.9 in 1981 to 3.1 in 2001. (Table 1)

表一 居住在家庭住戶的人口數目、家庭住戶數目和平均住戶人數

**Table 1 Population in Domestic Households, Number of Domestic Households and Average Household Size**

年份* Year*	居住在家庭住戶的人口數目 Population in domestic households	家庭住戶數目 Number of domestic households	平均住戶人數 Average household size
1981	4 888 200	1 244 700	3.9
1986	5 316 100	1 452 600	3.7
1991	5 425 200	1 582 200	3.4
1996	6 146 100	1 855 600	3.3
2001	6 539 200	2 053 400	3.1

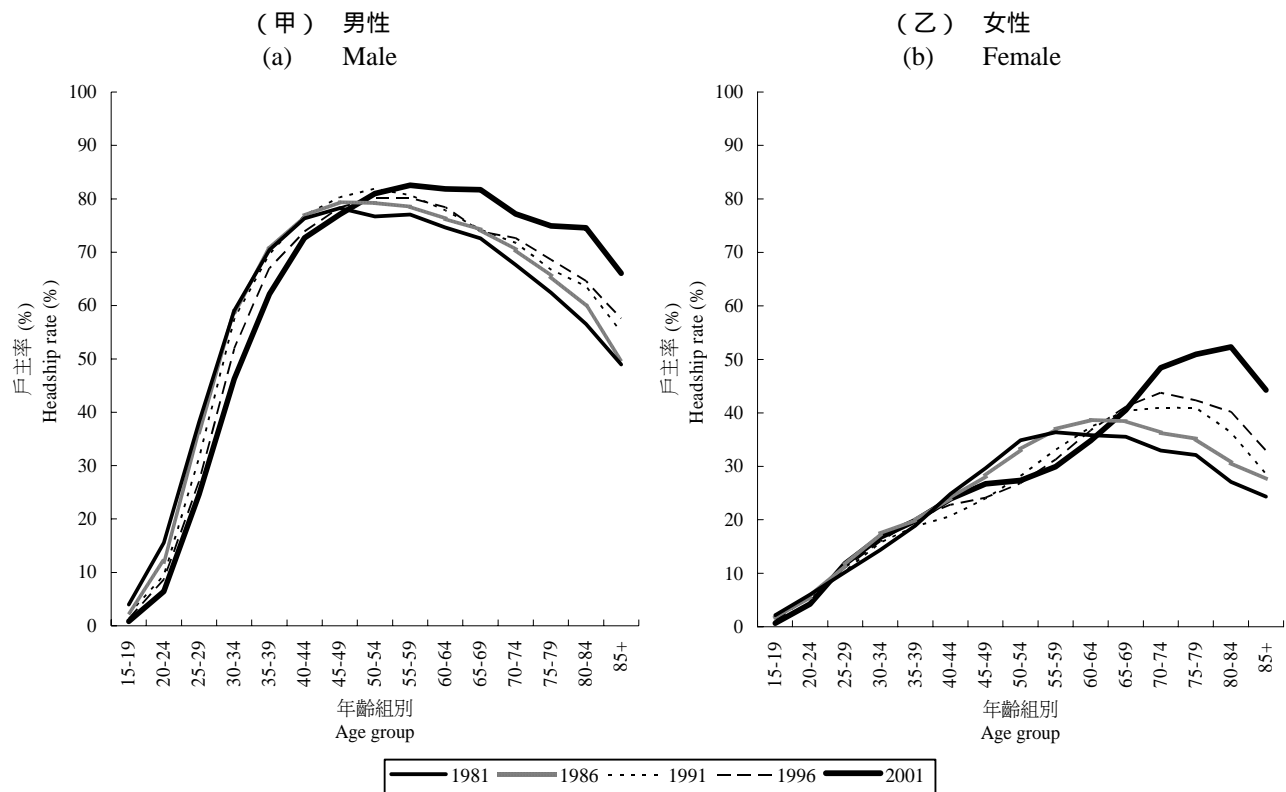
註釋：\* 人口普查／中期人口統計時刻。

Note: \* As at population census/by-census reference moments.

4.2 在過去期間，男性及女性的戶主率在不同的年齡組別呈現不同的趨勢。男性戶主率通常在年齡40歲以下呈現下跌趨勢，尤其是15-19歲及20-24歲的青年組別，分別下跌79%及59%。相對地，60歲及以上的戶主率則持續上升，其中85歲及以上的戶主率升幅最為顯著，達35%。（圖二）

4.2 Changes of male and female headship rates varied amongst different age groups over the past years. Declines in male headship rates were generally observed for household heads aged below 40. Significant decreases of 79% and 59% were recorded for the male household heads in the young age groups of 15-19 and 20-24 respectively. In contrast, the increase in male headship rates was persistent for those household heads aged 60 and over. Among them, those aged 85+ had the most prominent rate of increase of 35%. (Figure 2)

圖二 過往的戶主率  
Figure 2 Historical Headship Rates



註釋：人口普查／中期人口統計時刻。

Note: As at population census/by-census reference moments.

4.3 女性戶主率顯示同樣趨勢。女性戶主率在年齡24歲及以下下跌，在中間年齡組別大致平穩，在年齡65歲及以上則持續上升。（圖二）

4.3 Female headship rates also showed a similar trend. Decreases in female headship rates were observed for those aged less than 24. Female headship rates were rather steady in the middle age groups and an increasing trend was observed for those aged 65 and over. (Figure 2)

4.4 戶主率的轉變反映新家庭住戶組成的傾向，和社會經濟方面的生命週期有關。所以，辨識社會經濟因素對戶主率的趨勢是有其必要的。

4.4 The changes in headship rates over time reflect the changing propensities to form new households, which are in effect related to the life cycle in a socio-economic context. Therefore it would be enlightening to identify those socio-economic factors and review their effects on the trend of headship rates.



(i) 遲婚

4.5 男性初婚年齡中位數由一九八一年的27.0歲上升至二零零一年的30.2歲，女性則由23.9歲上升至27.5歲。這會影響新家庭的形成。值得注意的是年青年齡組別曾經結婚的比例下降，同時間這些年齡組別的戶主率亦有下降。（表二及表三）

(i) Delay of marriage

4.5 The median age at first marriage for men increased steadily from 27.0 in 1981 to 30.2 in 2001 while that for women from 23.9 to 27.5. This would affect the formation of new families. It is noted that the proportions of population ever married for the young age groups dropped to some extent, while at the same time a decline in the headship rates in these age groups was also observed. (Tables 2 and 3)

表二 初婚年齡  
Table 2 Median Age at First Marriage

年份 Year	男性 Male	女性 Female
1981	27.0	23.9
1986	28.0	25.3
1991	29.1	26.2
1996	30.0	26.9
2001	30.2	27.5

表三 一九九一年、一九九六年及二零零一年按年齡組別劃分的戶主率和曾經結婚比例  
Table 3 Headship Rates and Proportion of Population Ever Married, 1991, 1996 and 2001

年齡組別 Age Group	1991*		1996*		2001*	
	戶主率 Headship rate	曾經結婚比例 Proportion ever married	戶主率 Headship rate	曾經結婚比例 Proportion ever married	戶主率 Headship rate	曾經結婚比例 Proportion ever married
	百分比 %					
15-19	1.9	1.1	1.2	1.2	0.7	0.5
20-24	7.5	11.8	7.2	10.4	5.4	7.8
25-29	21.0	44.0	18.8	39.2	18.1	33.1
30-34	37.2	73.5	33.7	67.9	30.7	63.1
35-39	45.2	86.7	44.2	83.6	40.1	79.2
40-44	50.6	91.6	49.1	90.4	48.7	88.0
45-49	55.0	94.8	53.0	93.3	52.4	91.9
50-54	57.5	95.7	56.4	95.6	55.4	94.3
55-59	58.2	95.9	57.6	96.1	58.4	96.4
60-64	58.0	95.8	58.4	96.3	59.8	96.5
65-69	56.7	95.5	57.3	95.8	61.6	96.3
70-74	55.2	95.4	57.2	95.7	62.4	96.1
75-79	52.3	94.4	53.9	96.0	61.7	95.9
80-84	46.3	94.0	50.0	95.1	61.6	95.4
85+	35.7	94.3	40.8	94.6	52.1	94.5

註釋：\* 人口普查／中期人口統計時刻。

Note: \* As at population census/by-census reference moments.

(ii) 延遲生育

4.6 初婚至第一次活產的間距中位數由一九八一年的14.7個月增加至二零零一年的27.5個月。初婚至第二次活產的間距中位數上升幅度較顯著，由一九八一年的44.5個月上升至二零零一年的72.1個月。此外，統計假設檢驗証實有小孩的夫婦比較傾向自組家庭。因為延遲生育，夫婦離開父母而獨立生活的需求減少，對新家庭住戶的組成有負面作用。（表四）

(ii) *Delay of giving births*

4.6 An increase in the median interval between first marriage and first live birth was observed, from 14.7 months in 1981 to 27.5 months in 2001. The increase in median interval between first marriage and second live birth was more obvious, from 44.5 months in 1981 to 72.1 months in 2001. In addition, results of statistical tests ascertained that couples with children are more likely to form their own households. Since the delay of birth lessens the necessity and urgency of the married couples to live separately from their parents, it may induce a negative effect on the formation of new domestic households. (Table 4)

表四 由初婚至第一次及第二次活產的間距中位數（月）

**Table 4 Median of the Interval (in months) between First Marriage and First/Second Live Births**

年份 Year	初婚至第一次活產的間距中位數 Median of the interval between first marriage and first live birth	初婚至第二次活產的間距中位數 Median of the interval between first marriage and second live birth
1981	14.7	44.5
1986	19.6	54.2
1991	22.9	62.0
1996	26.6	66.0
2001	27.5	72.1

(iii) 香港居民在香港以外地方結婚

4.7 在一九八六至二零零一年間，香港居民意欲在香港以外地方結婚而成功申請無結婚紀錄證明書的數目在每年15 000宗至25 000宗之間。由於其配偶需要申請香港居留權，這種情況會在某程度上減低對在香港組成住戶的需要，從而減低戶主率。而這現象在中間年齡組別尤為普遍。（表五）

(iii) *Hong Kong residents marrying outside Hong Kong*

4.7 The number of persons applying for Certificate of Absence of Marriage Record with the intention to marry outside Hong Kong ranged from 15 000 to 25 000 per year during 1986-2001. This arrangement may somehow lessen the urgency and necessity for them to establish households in Hong Kong since their spouses have to apply for residence in Hong Kong. Therefore a negative effect on the increase of headship rate may be induced. The effect is most likely to occur in the middle age groups. (Table 5)

表五 成功申請無結婚紀錄證明書的數目

**Table 5 Number of Persons Granted Certificate of Absence of Marriage Record on Application**

年份 Year	數目 Number
1986	17 647
1991	24 647
1996	25 404
2001	15 578

(iv) 預期壽命更長

4.8 在傳統中國社會如香港，長者備受尊重。長者通常被認為是家庭住戶戶主。因為預期壽命的延長，導致香港長者增多，這會增加年長年齡組別及減低年青年齡組別的戶主率。  
(表六)

(iv) *Longer life expectancy*

4.8 In a traditional Chinese society like Hong Kong, older persons are much respected. The older person will likely be nominated as the household head. With a longer life expectancy, there are more older persons in Hong Kong. This will have a positive effect on the headship rate for the old age groups and a negative effect on the headship rate for the young age groups. (Table 6)

表六 出生時平均預期壽命

**Table 6 Expectation of Life at Birth**

年份 Year	男性 Male	女性 Female
1981	72.3	78.5
1986	74.1	79.4
1991	75.2	80.7
1996	76.7	82.7
2001	78.4	84.6

4.9 過去二十年，一人住戶佔住戶數目的比例維持在15%左右。二人及三人住戶的比例則增加。二人住戶由一九八一年的15.4%增加至二零零一年的21.8%，三人住戶則由15.4%上升至21.3%。另一方面，五人及以上的住戶則由一九八一年的36.8%下跌至二零零一年的17.8%。  
(表七)

4.9 The percentage of 1-person households remained steady at around 15% during the past 20 years. An increase in 2-person and 3-person households was observed, with the percentage of 2-person households increasing from 15.4% in 1981 to 21.8% in 2001 and the corresponding figures for 3-person households being 15.4% and 21.3% respectively. On the other hand, the percentage of households of size 5 and over declined from 36.8% in 1981 to 17.8% in 2001. (Table 7)

4.10 在一九八一年至二零零一年年間，由於住戶人數分布的眾數從五人及以上的住戶轉移至四人住戶，平均住戶人數由一九八一年的3.9人跌至二零零一年的3.1人。青年人要求私隱及獨居，同時很多年青夫婦不願與父母同住。結婚率和生育率下跌也引致少人數住戶。（表七）

4.10 During 1981 to 2001, the mode of the household size distribution shifted from 5+ to 4, and the average household size decreased from 3.9 in 1981 to 3.1 in 2001. Young persons demand more privacy and many would want to live alone. There are young couples who would not want to live with their parents. The decline in marriage rates and fertility rates also contribute to small households. (Table 7)

表七 過往的家庭住戶人數分布和平均住戶人數

Table 7 Historical Domestic Household Size Distribution and Average Household Size

年份* Year*	住戶人數 Household size					平均住戶人數 Average household size
	1	2	3	4	5+	
1981	15.2%	15.4%	15.4%	17.2%	36.8%	3.9
1986	14.8%	16.3%	17.3%	20.6%	31.0%	3.7
1991	14.8%	18.2%	19.4%	22.5%	25.1%	3.4
1996	14.9%	19.2%	20.1%	24.0%	21.7%	3.3
2001	15.7%	21.8%	21.3%	23.4%	17.8%	3.1

註釋：\* 人口普查／中期人口統計時刻。

Note: \* As at population census/by-census reference moments.

#### 未來趨勢

4.11 戶主率的推算根據過往的趨勢外推而成。為了符合合理的人口假設，推算的戶主率比過往戶主率的升／跌幅較為溫和。與過往的戶主率比較，年齡40歲以下的男性戶主率會緩和地下跌，而60歲及以上的男性戶主率緩慢上升。女性方面，25歲以下的戶主率預期下跌，25至64歲則維持穩定。而65歲及以上的年齡組別戶主率則溫和上升。（表八及圖三）

#### Future trend

4.11 The headship rates are projected by extrapolating past trends. To be in line with reasonable demographic assumptions, the projected headship rates are assumed to rise/decline in a rate that is less drastic than the past trends. As compared with the historical changes, a moderate rate of decline of male headship rates for those aged less than 40 is assumed, whilst the growth for those aged 60 and over is slower. A decline of female headship rates for those aged less than 25 is assumed. A fairly steady trend of female headship rates is assumed for those aged 25 to 64. A mild increase for the age group 65 and over is projected. (Table 8 and Figure 3)

表八 推算的戶主率  
Table 8 Projected Headship Rate

(甲) 男性 (a) Male															
年齡組別 Age group															
年 Year	15-19	20-24	25-29	30-34	35-39	40-44	45-49	50-54	55-59	60-64	65-69	70-74	75-79	80-84	85+
1981	4.0	15.6	38.2	59.1	70.4	76.3	78.2	76.7	77.1	74.7	72.6	67.7	62.4	56.6	49.0
1986	2.5	12.0	36.3	58.9	70.6	76.9	79.4	79.2	78.5	76.2	74.2	70.4	65.4	59.8	49.9
1991	2.2	9.4	31.4	57.5	69.6	76.9	80.3	81.9	80.7	77.8	74.2	71.8	66.7	63.6	55.0
1996	1.3	8.7	26.9	51.9	67.0	73.9	78.4	80.2	80.2	78.4	73.9	72.6	68.6	64.6	57.6
2001	0.8	6.4	24.6	46.2	62.2	72.7	77.1	81.0	82.6	81.9	81.7	77.2	74.9	74.6	66.1
2006	0.7	5.7	22.9	44.5	61.0	72.2	77.0	81.2	83.0	82.6	82.7	78.4	76.4	76.4	68.2
2011	0.6	5.2	21.5	42.8	60.0	71.7	76.9	81.4	83.4	83.2	83.5	79.5	77.7	77.9	70.0
2016	0.5	4.7	20.2	41.2	58.9	71.2	76.8	81.6	83.8	83.8	84.3	80.4	78.9	79.4	71.7
2021	0.5	4.4	19.1	39.7	57.8	70.7	76.7	81.7	84.2	84.3	85.0	81.3	80.0	80.7	73.3
2026	0.4	4.1	18.1	38.2	56.6	70.2	76.6	81.9	84.6	84.8	85.6	82.1	80.9	81.8	74.7
2031	0.4	3.9	17.3	36.8	55.5	69.6	76.5	82.1	84.9	85.3	86.2	82.8	81.8	82.9	75.9

(乙) 女性 (b) Female															
年齡組別 Age group															
年 Year	15-19	20-24	25-29	30-34	35-39	40-44	45-49	50-54	55-59	60-64	65-69	70-74	75-79	80-84	85+
1981	2.2	6.0	10.2	14.3	18.9	24.8	29.7	34.9	36.4	35.8	35.5	33.0	32.1	27.1	24.4
1986	1.6	5.6	11.5	17.4	19.9	24.0	28.2	33.2	36.9	38.7	38.5	36.3	35.1	30.6	27.6
1991	1.5	5.5	10.4	15.7	18.8	20.7	24.0	28.1	33.0	37.3	40.4	41.0	40.9	36.3	28.6
1996	1.1	5.7	11.0	15.9	20.2	22.8	24.1	26.8	31.2	36.7	41.1	43.8	42.3	40.2	33.0
2001	0.7	4.2	11.8	16.7	19.8	23.9	26.7	27.4	29.9	34.8	40.5	48.4	50.9	52.3	44.3
2006	0.6	4.1	11.8	16.8	19.8	23.7	26.4	26.9	29.4	34.6	40.9	49.7	53.3	55.9	49.2
2011	0.5	4.0	11.8	16.9	19.8	23.5	26.0	26.4	29.0	34.4	41.2	50.8	55.5	59.2	53.6
2016	0.5	3.9	11.8	17.0	19.8	23.4	25.7	26.0	28.6	34.2	41.6	52.0	57.6	62.3	57.4
2021	0.4	3.8	11.8	17.0	19.8	23.2	25.4	25.5	28.1	34.0	41.9	53.2	59.7	65.1	60.5
2026	0.4	3.7	11.8	17.1	19.8	23.1	25.0	25.1	27.7	33.8	42.3	54.3	61.6	67.5	63.0
2031	0.4	3.7	11.8	17.2	19.8	22.9	24.7	24.7	27.3	33.7	42.6	55.5	63.4	69.6	64.9

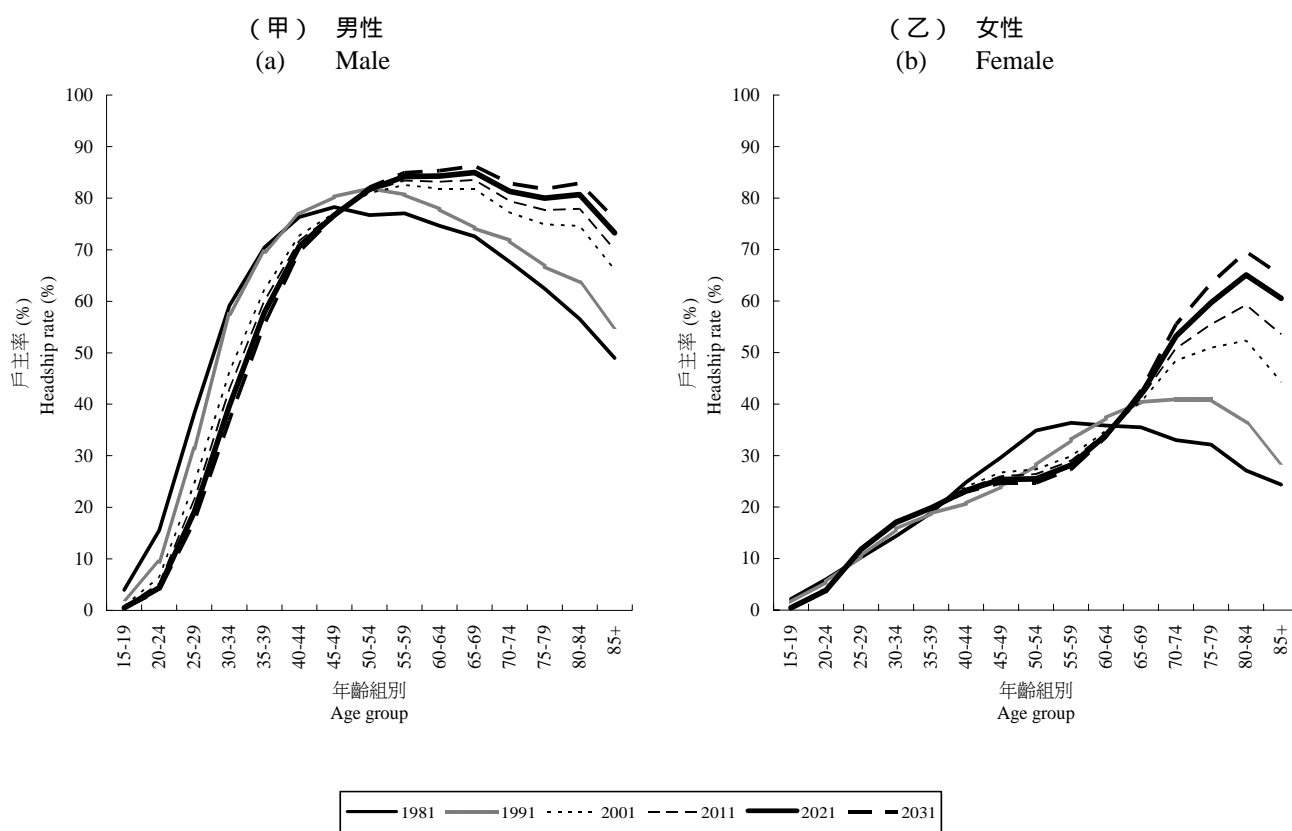
註釋：(1) 虛線以下的數字是推算數字。

(2) 本統計表上的數字應從每一欄閱讀。例如，表八(甲)的第一欄表示15-19歲的男性戶主率由一九八一年之4.0下降至二零三一年之0.4。

Notes: (1) Figures below the broken lines are based on projections.

(2) The figures in this table should be read for each column. For example, the first column Table 8(a) showed that the male headship rate for those aged 15-19 dropped from 4.0 in 1981 to 0.4 in 2031.

圖三 過往及推算的戶主率  
**Figure 3 Historical and Projected Headship Rates**



註釋：在一九八一年、一九九一年及二零零一年的數字是人口普查時刻數字，而二零一一年、二零二一年及二零三一年的數字則是年中數字。

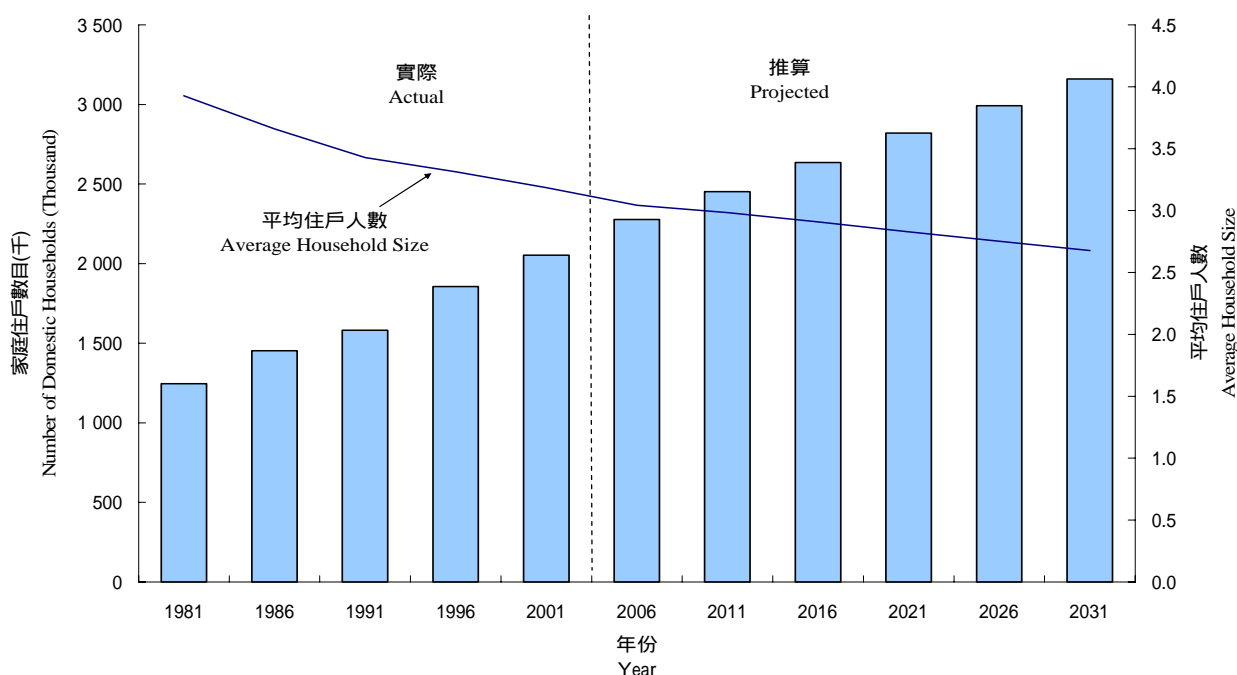
Note: The reference moments for the figures for 1981, 1991 and 2001 are the respective population census moments whereas the reference time-points for the figures for 2011, 2021 and 2031 are the respective mid-year time-points.

4.12 家庭住戶數目推算由二零零一年的205萬上升至二零三一年的316萬，平均每年增長率為1.4%。家庭住戶數目比人口數目（約每年0.9%）的增長快，導致平均住戶人數下跌。平均住戶人數推算由二零零一年的3.1人下跌至二零三一年的2.7人。（圖四及表九）

4.12 The number of domestic households is projected to increase from 2.05 million in 2001 to 3.16 million in 2031, representing an average annual growth rate of 1.4%. The growth of domestic households is faster than the growth of population (around 0.9% per annum), leading to a decrease in the average household size. The average household size is projected to decrease from 3.1 in 2001 to 2.7 in 2031. (Figure 4 and Table 9)

圖四 家庭住戶數目及平均住戶人數

Figure 4 Number of Domestic Households and Average Household Size



註釋：在一九八一年、一九八六年、一九九一年、一九九六年及二零零一年的數字是人口普查時刻／中期人口統計時刻數字，而二零零六年、二零一一年、二零一六年、二零二一年、二零二六年及二零三一年的數字則是年中數字。

Note: The reference moments for the figures for 1981, 1986, 1991, 1996 and 2001 are the respective population census/by-census moments whereas the reference time-points for the figures for 2006, 2011, 2016, 2021, 2026 and 2031 are the respective mid-year time-points.

表九 家庭住戶數目及平均住戶人數

Table 9 Number of Domestic Households and Average Household Size

年份 Year	家庭住戶數目 Number of domestic households	平均住戶人數 Average household size
<i>實際<sup>(1)</sup></i> <i>Actual<sup>(1)</sup></i>		
1981	1 244 700	3.9
1986	1 452 600	3.7
1991	1 582 200	3.4
1996	1 855 600	3.3
2001	2 053 400	3.1
<i>推算<sup>(2)</sup></i> <i>Projected<sup>(2)</sup></i>		
2006	2 277 000	3.0
2011	2 452 500	3.0
2016	2 635 500	2.9
2021	2 819 600	2.8
2026	2 992 000	2.8
2031	3 160 200	2.7

註釋：(1) 人口普查／中期人口統計時刻。

Notes: (1) As at population census/by-census reference moments.

(2) 年中時點。

(2) As at mid-year reference time-points.

4.13 一人住戶推算會有持續的增長（二零三一年為17.2%）。此外，二人住戶會取代三人住戶成為家庭住戶人數分布的眾數。在二零三一年，32.0%為二人住戶，而三人住戶則只有25.1%。由於低生育及結婚率的關係，大家庭不再是社會風氣。在二零三一年，五人及以上的住戶佔全部家庭住戶的5.3%。（表十）

4.13 There is a continuous growth in 1-person households (17.2% in 2031). The 2-person households will take over 3-person households as the mode of the distribution. In 2031, 32.0% of the households will be 2-person households, as compared to 25.1% 3-person households. Large family size ceases to be a norm owing to low fertility and marriage rates. Households of size 5 and over will constitute only 5.3% of all domestic households in 2031. (Table 10)

表十 家庭住戶人數分布  
Table 10 Domestic Household Size Distribution

年份 Year	住戶人數 Household size					平均住戶人數 Average household size
	1	2	3	4	5+	
<i>實際<sup>(1)</sup></i> <i>Actual<sup>(1)</sup></i>						
1981	15.2%	15.4%	15.4%	17.2%	36.8%	3.9
1986	14.8%	16.3%	17.3%	20.6%	31.0%	3.7
1991	14.8%	18.2%	19.4%	22.5%	25.1%	3.4
1996	14.9%	19.2%	20.1%	24.0%	21.7%	3.3
2001	15.7%	21.8%	21.3%	23.4%	17.8%	3.1
<i>推算<sup>(2)</sup></i> <i>Projected<sup>(2)</sup></i>						
2006	16.6%	23.7%	22.4%	22.3%	15.0%	3.0
2011	16.4%	25.2%	23.1%	22.0%	13.3%	3.0
2016	16.6%	26.9%	23.7%	21.5%	11.3%	2.9
2021	16.8%	28.6%	24.3%	21.1%	9.2%	2.8
2026	17.0%	30.3%	24.8%	20.7%	7.2%	2.8
2031	17.2%	32.0%	25.1%	20.3%	5.3%	2.7

註釋：（1）人口普查／中期人口統計時刻。

（2）年中時點。

Notes: (1) As at population census/by-census reference moments.

(2) As at mid-year reference time-points.

4.14 表十一及十二展示由二零零四年至二零三一年推算的家庭住戶數目平均住戶人數及按住戶人數劃分的推算家庭住戶數目。

4.14 Tables 11 and 12 show the projected number of domestic households with average household size and projected number of domestic households by household size for every year from 2004 to 2031.



表十一 二零零四年至二零三一年推算家庭住戶數目及平均住戶人數

**Table 11 Projected Number of Domestic Households and Average Household Size, 2004–2031**

年中 Mid-year	家庭住戶數目 Number of domestic households	與上一統計時點的變動 Change over preceding reference time-point	平均住戶人數 Average household size
2004	2 209 900	37 800	3.1
2005	2 243 600	33 700	3.1
2006	2 277 000	33 400	3.0
2007	2 310 800	33 800	3.0
2008	2 345 700	34 900	3.0
2009	2 381 200	35 500	3.0
2010	2 417 100	35 900	3.0
2011	2 452 500	35 500	3.0
2012	2 488 200	35 600	3.0
2013	2 524 500	36 400	3.0
2014	2 561 900	37 300	2.9
2015	2 599 200	37 400	2.9
2016	2 635 500	36 300	2.9
2017	2 671 800	36 300	2.9
2018	2 708 500	36 600	2.9
2019	2 745 700	37 300	2.9
2020	2 783 100	37 400	2.8
2021	2 819 600	36 500	2.8
2022	2 853 900	34 300	2.8
2023	2 888 200	34 300	2.8
2024	2 922 700	34 600	2.8
2025	2 957 500	34 800	2.8
2026	2 992 000	34 500	2.8
2027	3 026 300	34 300	2.7
2028	3 060 600	34 300	2.7
2029	3 094 300	33 700	2.7
2030	3 127 700	33 400	2.7
2031	3 160 200	32 500	2.7

表十二 二零零四年至二零三一年按住戶人數劃分的推算家庭住戶數目  
**Table 12 Projected Number of Domestic Households by Household Size, 2004–2031**

年中 Mid-year	住戶人數 Household size									
	1		2		3		4		5+	
	家庭住戶數目 No. of domestic households	%	家庭住戶數目 No. of domestic households	%	家庭住戶數目 No. of domestic households	%	家庭住戶數目 No. of domestic households	%	家庭住戶數目 No. of domestic households	%
2004	370 700	16.8	513 100	23.2	481 500	21.8	496 500	22.5	348 100	15.8
2005	374 400	16.7	526 700	23.5	495 300	22.1	502 600	22.4	344 600	15.4
2006	377 400	16.6	540 200	23.7	509 400	22.4	508 800	22.3	341 100	15.0
2007	382 200	16.5	555 000	24.0	519 900	22.5	514 400	22.3	339 300	14.7
2008	387 500	16.5	570 300	24.3	530 900	22.6	520 200	22.2	336 700	14.4
2009	392 900	16.5	586 100	24.6	542 400	22.8	526 200	22.1	333 500	14.0
2010	398 300	16.5	602 300	24.9	554 300	22.9	532 300	22.0	329 800	13.6
2011	403 400	16.4	618 500	25.2	566 400	23.1	538 400	22.0	325 900	13.3
2012	409 200	16.4	635 300	25.5	577 400	23.2	544 200	21.9	321 900	12.9
2013	415 700	16.5	652 900	25.9	588 800	23.3	550 100	21.8	317 000	12.6
2014	422 800	16.5	671 300	26.2	600 800	23.5	556 000	21.7	311 000	12.1
2015	430 000	16.5	689 900	26.5	613 100	23.6	561 900	21.6	304 300	11.7
2016	436 400	16.6	708 300	26.9	625 300	23.7	567 800	21.5	297 600	11.3
2017	443 400	16.6	727 200	27.2	637 000	23.8	573 600	21.5	290 700	10.9
2018	450 400	16.6	746 500	27.6	648 800	24.0	579 300	21.4	283 400	10.5
2019	457 900	16.7	766 300	27.9	660 900	24.1	585 000	21.3	275 600	10.0
2020	465 400	16.7	786 400	28.3	673 100	24.2	590 700	21.2	267 400	9.6
2021	472 400	16.8	806 300	28.6	685 100	24.3	596 300	21.1	259 500	9.2
2022	479 100	16.8	825 900	28.9	696 100	24.4	601 300	21.1	251 500	8.8
2023	485 900	16.8	845 600	29.3	707 100	24.5	606 300	21.0	243 300	8.4
2024	492 900	16.9	865 800	29.6	718 200	24.6	611 200	20.9	234 600	8.0
2025	500 200	16.9	886 400	30.0	729 500	24.7	616 000	20.8	225 400	7.6
2026	507 300	17.0	907 100	30.3	740 700	24.8	620 800	20.7	216 200	7.2
2027	514 500	17.0	928 000	30.7	751 600	24.8	625 400	20.7	206 800	6.8
2028	521 900	17.1	949 200	31.0	762 500	24.9	629 900	20.6	197 200	6.4
2029	528 900	17.1	970 300	31.4	773 200	25.0	634 400	20.5	187 500	6.1
2030	536 000	17.1	991 500	31.7	784 000	25.1	638 700	20.4	177 500	5.7
2031	542 700	17.2	1012 600	32.0	794 500	25.1	642 900	20.3	167 600	5.3

註釋：由於四捨五入關係，數字可能與表十一所示的總數略有出入。

Note: Figures may not add up to total shown in Table 11 owing to rounding.

二零零三年一月至 二月刊載的專題文章目錄

List of Feature Articles Published during January to December 2003

月份	文章題目	Month	Title of Article
1	(i) 對外直接投資統計 (ii) 一九九三至二零零二年中層經理級與專業僱員薪金統計數字 (iii) 一九九一至二零零一年的香港專利統計數字 (iv) 勞動人口推算 2002-2021	1	(i) External direct investment statistics (ii) Salary statistics of middle-level managerial and professional employees 1993-2002 (iii) Patent statistics for Hong Kong, 1991-2001 (iv) Labour force projections for 2002-2021
2	(i) 從事製造業相關活動的貿易公司 (ii) 服務業的生產者價格指數 (iii) 電子產品及電子行業統計數字	2	(i) Trading firms with manufacturing-related activities (ii) Producer price indices of service industries (iii) Statistics on electronic products and the electronics industry
3	(i) 經季節性調整的消費物價指數 (ii) 香港水務概覽 (iii) 一九八一年至二零零二年職位空缺統計數字 (iv) 一九九八至二零零一年香港的研究及發展統計數字	3	(i) Seasonally adjusted Consumer Price Indices (ii) An overview of water supplies in Hong Kong (iii) Statistics on job vacancies from 1981 to 2002 (iv) Research and development statistics of Hong Kong, 1998-2001
4	(i) 二零零二年就業綜合估計數字 (ii) 一九九三至二零零二年綜合社會保障援助計劃的統計數字 (iii) 二零零二年失業率的走勢 (iv) 二零零二年香港的中醫藥業	4	(i) Composite employment estimates 2002 (ii) Statistics on comprehensive social security assistance scheme, 1993-2002 (iii) The movement of the unemployment rate in 2002 (iv) The Chinese medicine sector in Hong Kong, 2002
5	(i) 香港進口貿易分析 (ii) 本港居民到中國內地旅行的消費開支  (iii) 一九九二至二零零二年香港的高科技產品貿易 (iv) 一九九八 / 九九至二零零二 / 零三年幼稚園學費統計	5	(i) Analysis of Hong Kong's imports (ii) Consumption expenditure of Hong Kong residents travelling to the mainland of China  (iii) Trade in high technology products in Hong Kong, 1992-2002 (iv) Statistics on school fees of kindergartens, 1998/99-2002/03
6	(i) 二零零二年按區議會分區劃分的香港人口概況剖析 (ii) 香港的資訊科技及電訊業 (iii) 香港服務貿易的發展	6	(i) A profile of Hong Kong population analysed by District Council District, 2002 (ii) The information technology and telecommunications sector in Hong Kong (iii) Development of trade in services of Hong Kong
7	(i) 二零零二年香港國際投資頭寸 (ii) 香港的金融及商用服務業 (iii) 到中國內地作私人旅行的本港居民的社會經濟特徵 (iv) 一九九五 / 九六至二零零一 / 零二年度政府對研究及發展、創新及科技提升的資助 (v) 香港的印刷及出版業	7	(i) Hong Kong's international investment position for 2002 (ii) The financing and business services industries in Hong Kong (iii) Socio-economic characteristics of Hong Kong residents making personal travel to the mainland of China (iv) Government funding of research and development, innovation and technology upgrading, 1995/96-2001/02 (v) Printing and publishing industry in Hong Kong
8	(i) 一九八一至二零零二年香港的結婚及離婚趨勢 (ii) 消費者開支的趨勢 (iii) 一九九七年至二零零二年港口貨物統計	8	(i) Marriage and divorce trends in Hong Kong, 1981-2002 (ii) Trends in consumer spending (iii) Port cargo statistics, 1997-2002
9	(i) 一九九七年至二零零二年貨櫃統計 (ii) 空運貨物統計 (iii) 一九九三年至二零零二年香港道路交通意外統計 (iv) 一九九二至二零零二年香港能源統計數字 (v) 一九九五 / 九六至二零零一 / 零二年度香港高等教育機構的研究成果	9	(i) Container statistics, 1997-2002 (ii) Air cargo statistics (iii) Road traffic accidents statistics in Hong Kong, 1993-2002 (iv) Hong Kong energy statistics, 1992-2002 (v) Research output of higher education institutions in Hong Kong, 1995/96 to 2001/02
10	(i) 機構單位記錄庫及其服務簡介 (ii) 二零零二年香港國際投資頭寸與選定經濟體系的比較 (iii) 二零零二年香港的藥物濫用情況	10	(i) Introduction of the Central Register of Establishments and its services (ii) Comparing Hong Kong's international investment position with selected economies, 2002 (iii) Drug abuse situation in Hong Kong in 2002
11	(i) 一九八二至二零零二年香港豬肉及牛肉食用回顧 (ii) 香港主要經濟活動的勞工生產力指數	11	(i) A review of pork and beef consumption in Hong Kong, 1982 – 2002 (ii) Labour Productivity Index for major economic activities of Hong Kong
12	(i) 至二零三一年的香港家庭住戶推算 (ii) 工商業的資訊科技開支 (iii) 入境旅遊統計數字 (iv) 一九八一年至二零零二年貨物及服務貿易的增長 (v) 香港經濟的四大支柱行業	12	(i) Hong Kong domestic household projections up to 2031 (ii) Expenditure on information technology in the business sector (iii) Statistics on inbound tourism (iv) Growth of trade in goods and services from 1981 to 2002 (v) The four pillar industries in the Hong Kong economy



**二零零四年一月至四月**  
**政府統計處定期性統計數據發布日期一覽表**  
**Schedule for Issuing Regular Releases of Statistical Data by**  
**the Census and Statistics Department, January - April 2004**

每年九月底，本處會向傳媒公布翌年定期性統計數據新聞發布的詳細時間表。本附錄載列未來四個月的發布日期。數據於發布日期下午四時十五分向傳媒公布。有關的新聞公布於稍後時間列載於政府統計處的網站上，網址是 <http://www.info.gov.hk/censtatd/>。發布日期下午四時十五分後致電本處，亦可查詢有關統計數據。

The date schedule for issuing regular press releases of statistical data in the ensuing year is issued to the mass media in end September of each year. This Annex gives the schedule for the coming four months. Data are issued to the media at 4:15 p.m. on the date of release. The press releases are posted shortly afterwards on the Department's website (Address-<http://www.info.gov.hk/censtatd/>). Telephone enquiries may also be made to the Department after 4:15 p.m. on the release date.

統計數據 Statistical Data	發布日期 (日/月/年) Release Date (Day/Month/Year)
<b>人口統計</b> <b>Population Statistics</b>	
1. 二零零三年年底人口數字 <i>查詢電話</i> <i>Enquiry Telephone Number</i> 2716 8044	End-year Population for 2003  17.02.2004
<b>勞工統計</b> <b>Labour Statistics</b>	
1. 失業及就業不足統計 二零零三年十月至十二月 二零零三年十一月至二零零四年一月 二零零三年十二月至二零零四年二月 二零零四年一月至三月 <i>查詢電話</i> <i>Enquiry Telephone Number</i> 2887 5506	Unemployment and Underemployment Statistics October - December 2003 November 2003 - January 2004 December 2003 - February 2004 January - March 2004  19.01.2004 19.02.2004 18.03.2004 22.04.2004
2. 就業及空缺統計 二零零三年十二月 <i>查詢電話</i> <i>Enquiry Telephone Number</i> 2582 4751	Employment and Vacancies Statistics December 2003  22.03.2004
3. 薪金總額及工資統計 二零零三年第四季 <i>查詢電話</i> <i>Enquiry Telephone Number</i> 2582 4746	Payroll and Wage Statistics 4th Quarter 2003  30.03.2004

## 對外貿易統計

### External Trade Statistics

1.	對外商品貿易總計數字	External Merchandise Trade Aggregate Figures	
	二零零三年十二月	December 2003	29.01.2004
	二零零四年一月	January 2004	26.02.2004
	二零零四年二月	February 2004	26.03.2004
	二零零四年三月	March 2004	27.04.2004
	查詢電話		
	Enquiry Telephone Number	2582 5041	
2.	按國家 / 地區及貨品分析的對外商品貿易統計	External Merchandise Trade Statistics Classified by Country/Territory and Commodity	
	二零零三年十一月	November 2003	06.01.2004
	二零零三年十二月	December 2003	03.02.2004
	二零零四年一月	January 2004	02.03.2004
	二零零四年二月	February 2004	02.04.2004
	查詢電話		
	Enquiry Telephone Number	2582 5041	
3.	對外商品貿易貨量及價格統計	Volume and Price Statistics of External Merchandise Trade	
	二零零三年十一月	November 2003	26.01.2004
	二零零三年十二月	December 2003	24.02.2004
	二零零四年一月	January 2004	25.03.2004
	二零零四年二月	February 2004	26.04.2004
	查詢電話		
	Enquiry Telephone Number	2582 4914	
4.	按產品所屬工業劃分的本港製造業產品出口統計	Domestic Export Statistics Classified by Industrial Origin	
	二零零三年	2003	10.02.2004
	查詢電話		
	Enquiry Telephone Number	2805 6641	
5.	船隻、港口貨物及貨櫃統計	Statistics on Vessels, Port Cargo and Containers	
	二零零三年第四季	4th Quarter 2003	11.03.2004
	查詢電話		
	Enquiry Telephone Number	2582 4889	
6.	涉及外發中國內地加工貿易統計	Statistics on Trade Involving Outward Processing in the Mainland of China	
	二零零三年第四季	4th Quarter 2003	23.03.2004
	查詢電話		
	Enquiry Telephone Number	2565 7446	

## 物價統計

### Price Statistics

1. 消費物價指數	Consumer Price Index	
二零零三年十二月	December 2003	20.01.2004
二零零四年一月	January 2004	23.02.2004
二零零四年二月	February 2004	22.03.2004
二零零四年三月	March 2004	23.04.2004

*查詢電話*

*Enquiry Telephone Number* 2805 6401

## 國民收入及國際收支平衡統計

### National Income and Balance of Payments Statistics

1. 本地生產總值	Gross Domestic Product	
二零零三年第四季 <sup>(1)</sup>	4th Quarter 2003 <sup>(1)</sup>	10.03.2004

*查詢電話*

*Enquiry Telephone Number* 2582 4787

註： (1) 當二零零四年至二零零五年度財政預算案在二零零四年三月十日發表時，二零零三年第四季及二零零三年全年的本地生產總值會在財政預算案的輔助文件內公布。有關的輔助文件是《二 三年經濟概況》、《二 四年經濟展望》和《二 三年本地生產總值》。政府統計處不會在當日就二零零三年第四季及二零零三年全年的本地生產總值另發新聞稿。

Note: (1) When the 2004-2005 Budget is presented on 10 March 2004, the Gross Domestic Product (GDP) for the fourth quarter of 2003 and the whole year of 2003 will be released in the Budget supporting documents, specifically the “2003 Economic Background”, the “2004 Economic Prospects” and the “2003 Gross Domestic Product”. No separate press release will be issued on the GDP for the fourth quarter of 2003 and the whole year of 2003 by the Census and Statistics Department on that day.

2. 以固定價格計算按經濟活動劃分的按季本地生產總值	Quarterly Constant Price Gross Domestic Product by Economic Activity	
二零零三年第四季	4th Quarter 2003	29.03.2004

*查詢電話*

*Enquiry Telephone Number* 2116 5188

3. 本地居民生產總值及對外要素收益流動數字	Gross National Product and External Factor Income Flows	
二零零三年第四季	4th Quarter 2003	19.03.2004

*查詢電話*

*Enquiry Telephone Number* 2116 5101

4. 國際收支平衡統計	Balance of Payments Statistics	
二零零三年第四季	4th Quarter 2003	30.03.2004

*查詢電話*

*Enquiry Telephone Number* 2116 8660

---

**其他各類統計**  
**Various Other Types of Statistics**

1.	零售業銷貨額統計	Retail Sales Statistics	
	二零零三年十一月	November 2003	08.01.2004
	二零零三年十二月	December 2003	06.02.2004
	二零零四年一月	January 2004	08.03.2004
	二零零四年二月	February 2004	06.04.2004
	查詢電話		
	Enquiry Telephone Number	2802 1367	
2.	工業生產指數和製造業生產者 價格指數	Quarterly Index of Industrial Production and Quarterly Producer Price Indices for Manufacturing Industries	
	二零零三年第四季	4th Quarter 2003	18.03.2004
	查詢電話		
	Enquiry Telephone Number	2805 6641	
3.	建造工程完成量統計	Construction Output Statistics	
	二零零三年第四季	4th Quarter 2003	18.03.2004
	查詢電話		
	Enquiry Telephone Number	2805 6424	
4.	食肆的收入及購貨額統計	Restaurant Receipts and Purchases Statistics	
	二零零三年第四季	4th Quarter 2003	16.02.2004
	查詢電話		
	Enquiry Telephone Number	2802 1367	
5.	服務行業按季業務收益指數	Quarterly Business Receipts Indices for Service Industries	
	二零零三年第四季	4th Quarter 2003	19.03.2004
	查詢電話		
	Enquiry Telephone Number	2802 1269	
6.	按季業務展望統計調查結果	Results of the Quarterly Business Tendency Survey	
	二零零四年第一季	1st Quarter 2004	03.02.2004
	查詢電話		
	Enquiry Telephone Number	2805 6112	

---



名稱	Title	售價不包括 郵費(港元) Price Not Including Postage (HK\$)	售價連本地 郵費(港元) Price Including Local Postage (HK\$)
<b>(一) 刊物</b>	<b>(A) Publications</b>		
<b>綜合性統計刊物</b>	<b>General Statistical Digests</b>		
香港經濟趨勢 (半月刊)	Hong Kong Economic Trends ( <i>half-monthly</i> )	13.0	16.0
香港統計月刊 ** §	Hong Kong Monthly Digest of Statistics ** §	60.0	76.5
香港統計年刊, 二零零三年版 §	Hong Kong Annual Digest of Statistics, 2003 Edition §	74.0	102.0
香港社會及經濟趨勢, 二零零一年版 (雙年刊)	Hong Kong Social and Economic Trends, 2001 Edition ( <i>biennial</i> )	84.0	100.4
香港的發展(1967 - 2002) - 統計圖表集 §	A Graphic Guide on Hong Kong's Development (1967 - 2002) §	38.0	54.4
香港統計數字一覽, 二 三年版 (年刊) ++	Hong Kong in Figures, 2003 Edition ( <i>annual</i> ) ++	免費 Free	-
<b>對外貿易</b>	<b>External Trade</b>		
<b>商品貿易統計</b>	<b>Merchandise Trade Statistics</b>		
香港商品貿易統計:	Hong Kong Merchandise Trade Statistics:		
進口 (月刊)	Imports ( <i>monthly</i> )	208.0	236.0
港產品出口及轉口 (月刊)	Domestic Exports and Re-exports ( <i>monthly</i> )	208.0	236.0
二零零二年周年附刊, 按國家及貨品劃分:	Annual Supplement 2002, Country by Commodity:		
- 進口	- Imports	198.0	226.0
- 港產品出口及轉口	- Domestic Exports and Re-exports	198.0	245.0
上述商品貿易統計刊物亦備電腦輸出縮微膠片 (COM)+:	The above merchandise trade statistics publications are also available in Computer Output Microfiche (COM) +:		
進口 (月刊)	Imports ( <i>monthly</i> )	52.5	##
港產品出口 (月刊)	Domestic Exports ( <i>monthly</i> )	33.0	##
轉口 (月刊)	Re-exports ( <i>monthly</i> )	70.0	##
周年附刊	Annual Supplement		
- 進口	- Imports	93.5	##
- 港產品出口	- Domestic Exports	70.5	##
- 轉口	- Re-exports	146.5	##
香港對外商品貿易 (月刊)	Hong Kong External Merchandise Trade ( <i>monthly</i> )	55.0	71.5
二零零二年香港對外商品貿易回顧 (年刊)	Annual Review of Hong Kong External Merchandise Trade 2002 ( <i>annual</i> )	56.0	64.2
香港商品貿易指數 (月刊)	Hong Kong Merchandise Trade Index Numbers ( <i>monthly</i> )	13.0	17.0
對外商品貿易數字 (月刊)	External Merchandise Trade Figures ( <i>monthly</i> )	免費 Free	-
按產品所屬工業劃分的本港產品出口貨值 (季刊)	Merchandise Domestic Exports Statistics Classified by Industrial Origin ( <i>quarterly</i> )	免費 Free	-
<b>船務統計</b>	<b>Shipping Statistics</b>		
香港船務統計 (季刊)	Hong Kong Shipping Statistics ( <i>quarterly</i> )	48.0	56.5
<b>服務貿易統計</b>	<b>Trade in Services Statistics</b>		
二零零一年香港服務貿易統計報告 (年刊)	Report on Hong Kong Trade in Services Statistics for 2001 ( <i>annual</i> )	30.0	34.4
<b>國民收入</b>	<b>National Income</b>		
本地生產總值 (季刊)	Gross Domestic Product ( <i>quarterly</i> )	30.0	34.5
二 二年本地生產總值 (年刊) ++	2002 Gross Domestic Product ( <i>annual</i> ) ++	47.0	55.2
本地生產總值特刊, 二零零二年八月 (特刊)	Special Report on Gross Domestic Product, August 2002 ( <i>ad hoc</i> )	46.0	54.2
<b>國際收支平衡</b>	<b>Balance of Payments</b>		
香港國際收支平衡統計 一九九七年至一九九九年 (特刊)	Balance of Payments Statistics of Hong Kong 1997 to 1999 ( <i>ad hoc</i> )	14.0	18.0
香港國際收支平衡統計 (季刊)	Balance of Payments Statistics of Hong Kong ( <i>quarterly</i> )	27.0	31.0
<b>勞工</b>	<b>Labour</b>		
<b>勞動人口、就業及空缺統計</b>	<b>Labour Force, Employment and Vacancy Statistics</b>		
綜合住戶統計調查按季統計報告書	Quarterly Report on General Household Survey	40.0	48.5
就業及空缺按季統計報告	Quarterly Report of Employment and Vacancies Statistics	32.0	36.5
建築地盤就業及空缺按季統計報告	Quarterly Report of Employment and Vacancies at Construction Sites	23.0	27.0
就業及空缺統計 (詳細統計表) (年刊):	Employment and Vacancies Statistics (Detailed Tables) ( <i>annual</i> ):		
甲系列 (服務業), 2003	Series A (Services Sectors), 2003	55.0	71.4
乙系列 (批發、零售、飲食及酒店業), 2003	Series B (Wholesale and Retail Trades, Restaurants and Hotels), 2003	35.0	39.4
丙系列 (工業), 2002	Series C (Industrial Sectors), 2002	80.0	96.4
丁系列 (進出口貿易業), 2002	Series D (Import/Export Trades), 2002	30.0	34.0

名稱	Title	售價不包括 郵費(港元) Price Not Including Postage (HK\$)	售價連本地 郵費(港元) Price Including Local Postage (HK\$)
<b>(一) 刊物 (續)</b>	<b>(A) Publications (Cont'd.)</b>		
<b>勞工(續)</b>	<b>Labour (Cont'd.)</b>		
<b>工資及勞工收入統計</b>	<b>Wages and Labour Earnings Statistics</b>		
工資及薪金總額按季統計報告	Quarterly Report of Wage and Payroll Statistics	35.0	43.5
二零零三年經理級與專業僱員薪金及 僱員福利統計報告 (高層管理人員除外) (年刊) §	2003 Report of Salaries and Employee Benefits Statistics Managerial and Professional Employees (Excluding Top Management) (annual) §	20.0	24.4
僱用於政府建築工程的工人每日平均工資 (月刊)	Average Daily Wages of Workers Engaged in Government Building and Construction Projects (monthly)	免費 Free	-
<b>人力統計</b>	<b>Manpower Statistics</b>		
二零零二年人力培訓及工作技能需求機構單位 統計調查報告 (特刊)	Report on 2002 Establishment Survey on Manpower Training and Job Skills Requirements (ad hoc)	48.0	56.2
<b>消費物價及住戶開支</b>	<b>Consumer Prices and Household Expenditure</b>		
消費物價指數月報	Monthly Report on the Consumer Price Index	35.0	39.5
二零零二年消費物價指數年報	Annual Report on the Consumer Price Index 2002	36.0	44.2
一九九九至二零零零年住戶開支統計調查 及重訂消費物價指數基期 (特刊)	1999/2000 Household Expenditure Survey and the Rebasing of the Consumer Price Indices (ad hoc)	28.0	36.2
<b>工商業</b>	<b>Commerce and Industry</b>		
<b>工業生產</b>	<b>Industrial Production</b>		
二零零一年工業生產按年統計調查報告	Report on 2001 Annual Survey of Industrial Production	48.0	56.2
工業生產按季指數	Quarterly Index of Industrial Production	11.0	14.0
製造業按季生產者價格指數	Quarterly Producer Price Indices for Manufacturing Industries	10.0	13.0
紡織業生產按季統計數字	Quarterly Textile Production Statistics	4.0	7.0
<b>經銷及服務業</b>	<b>Distribution and Services</b>		
二零零一年批發、零售、進口與出口貿易、 食肆及酒店按年統計調查報告	Report on 2001 Annual Survey of Wholesale, Retail and Import and Export Trades, Restaurants and Hotels	44.0	52.2
食肆的收入及購貨額按季統計調查報告	Report on Quarterly Survey of Restaurant Receipts and Purchases	5.0	8.0
零售業銷貨額按月統計調查報告	Report on Monthly Survey of Retail Sales	8.0	11.0
二零零一年運輸及有關服務按年統計調查報告	Report on 2001 Annual Survey of Transport and Related Services	34.0	38.0
二零零一年倉庫、通訊、財務、保險及 商用服務按年統計調查報告	Report on 2001 Annual Survey of Storage, Communication, Financing, Insurance and Business Services	34.0	42.2
服務行業按季業務收益指數	Quarterly Business Receipts Indices for Service Industries	9.0	12.0
服務業統計摘要, 二零零三年版 (年刊)	Statistical Digest of the Services Sector, 2003 Edition (annual)	94.0	110.4
服務業統計摘要按季補充資料	Quarterly Supplement to Statistical Digest of the Services Sector	65.0	73.2
<b>屋宇建築及建造</b>	<b>Building and Construction</b>		
二零零一年屋宇建築、建造及地產業按 年統計調查報告	Report on 2001 Annual Survey of Building, Construction and Real Estate Sectors	32.0	36.4
建造工程完成量按季統計調查報告	Report on the Quarterly Survey of Construction Output	12.0	16.0
特選建築材料平均批發價格 (月刊)	Average Wholesale Prices of Selected Building Materials (monthly)	免費 Free	-
政府合約的工資及材料成本指數 (月刊)	Index Numbers of the Costs of Labour and Selected Materials Used in Government Contracts (monthly)	免費 Free	-
公營建築工程的工資及材料成本指數 (月刊)	Index Numbers of the Costs of Labour and Materials Used in Public Sector Construction Projects (monthly)	免費 Free	-
<b>能源</b>	<b>Energy</b>		
香港能源統計 (季刊)	Hong Kong Energy Statistics (quarterly)	23.0	27.0
香港能源統計, 二零零二年版	Hong Kong Energy Statistics, 2002 Edition	24.0	28.0
<b>其他經濟及工商業統計</b>	<b>Other Economic and Business Statistics</b>		
業務展望按季統計調查報告	Report on Quarterly Business Tendency Survey	9.0	12.0
手頭訂單按月統計調查	Monthly Survey of Orders-on-hand	8.0	11.0
二零零一年香港對外直接投資統計 (年刊)	External Direct Investment Statistics of Hong Kong 2001 (annual)	24.0	28.0
二零零三年海外公司駐香港的地區代表 按年統計調查報告 (年刊)	Report on 2003 Annual Survey of Regional Offices Representing Overseas Companies in Hong Kong (annual)	26.0	30.0
二零零二年資訊科技在工商業的使用情況 和普及程度按年統計調查報告 (年刊)	Report on 2002 Annual Survey on Information Technology Usage and Penetration in the Business Sector (annual)	68.0	76.2
二零零二年工商業創新活動按年統計調查 報告 (年刊)	Report on 2002 Annual Survey of Innovation Activities in the Business Sector (annual)	32.0	40.2
香港 - 資訊社會, 二零零二年版 (特刊)	Hong Kong as an Information Society, 2002 Edition (ad hoc)	42.0	50.2

名稱	Title	售價不包括	售價連本地
		郵費(港元) Price Not Including Postage (HK\$)	郵費(港元) Price Including Local Postage (HK\$)
<b>(一) 刊物 (續)</b>	<b>(A) Publications (Cont'd.)</b>		
<b>人口</b>	<b>Population</b>		
<b>香港二零零一年人口普查</b>	<b>Hong Kong 2001 Population Census</b>		
二零零一年人口普查 (特刊)	2001 Population Census ( <i>ad hoc</i> )		
簡要報告	Summary Results	38.0	46.2
主要報告 - 第一冊	Main Report - Volume I	84.0	100.4
主要報告 - 第二冊	Main Report - Volume II	66.0	82.4
主要統計表	Main Tables	70.0	86.4
統計圖解	Graphic Guide	30.0	38.2
有關各區議會分區的基本統計表	Basic Tables for District Council Districts	34.0	42.2
有關香港島各選區的基本統計表	Basic Tables for Constituency Areas : Hong Kong Island	40.0	56.4
有關九龍各選區的基本統計表	Basic Tables for Constituency Areas : Kowloon	48.0	64.4
有關新界各選區的基本統計表	Basic Tables for Constituency Areas : New Territories	74.0	102.0
區議會分區及選區統計表的附件 - 區域分界地圖	Boundary Maps Complementary to Tables for District Council Districts and Constituency Areas	122.0	150.0
有關各規劃統計小區的基本統計表	Basic Tables for Tertiary Planning Units	82.0	110.0
規劃統計小區統計表的附件 - 區域分界地圖	Boundary Maps Complementary to Tables for Tertiary Planning Units	42.0	50.2
主題性報告 - 青年	Thematic Report - Youths	36.0	44.2
主題性報告 - 女性及男性	Thematic Report - Women and Men	40.0	48.2
主題性報告 - 長者	Thematic Report - Older Persons	36.0	44.2
主題性報告 - 少數族裔人士	Thematic Report - Ethnic Minorities	44.0	52.2
主題性報告 - 內地來港定居未足七年人士	Thematic Report - Persons from the Mainland Having Resided in Hong Kong for Less Than 7 Years	38.0	46.2
主題性報告 - 單親人士	Thematic Report - Single Parents	36.0	44.2
<b>其他與人口有關的刊物</b>	<b>Other Publications relating to Population</b>		
香港人口推算 2002-2031 (特刊)	Hong Kong Population Projections 2002-2031 ( <i>ad hoc</i> )	12.0	16.4
香港人口生命表 1996-2031 (特刊)	Hong Kong Life Tables 1996-2031 ( <i>ad hoc</i> )	20.0	24.4
香港人口趨勢 1981-2001 (特刊)	Demographic Trends in Hong Kong 1981-2001 ( <i>ad hoc</i> )	28.0	36.2
<b>社會資料</b>	<b>Social Data</b>		
從綜合住戶統計調查搜集所得的社會資料	Social Data Collected via the General Household Survey		
第三 四號專題報告書 (特刊):	Special Topics Report No. 34 ( <i>ad hoc</i> ):	65.0	73.2
就業人士轉工情況	Job-changing of employed persons		
臨時僱員就業情況	Casual employment		
僱員離職情況	Worker displacement		
主題性住戶統計調查第 四號報告書 (特刊):	Thematic Household Survey Report No. 14 ( <i>ad hoc</i> ):	66.0	74.2
運用時間的模式	Time Use Pattern		
參與無酬活動的情況	Pattern of Participation in Unpaid Activities		
參與社交活動的情況	Pattern of Participation in Social Activities		
家務分擔的情況	Sharing of Housework		
對料理家務者的意見	Views on Home-makers		
按區議會分區劃分的人口及住戶統計資料	Population and Household Statistics Analysed by District Council	22.0	25.7
2002 (年刊)	District 2002 ( <i>annual</i> )		
一九九八年在香港發生的罪案及罪案事主 (特刊)	Crime and Its Victims in Hong Kong in 1998 ( <i>ad hoc</i> )	38.0	54.4
香港的女性及男性 - 主要統計數字, 二零零三年版 (年刊)	Women and Men in Hong Kong - Key Statistics, 2003 Edition ( <i>annual</i> )	40.0	48.2
<b>統計分類表</b>	<b>Classification Lists</b>		
香港進出口貨物分類表 (協調制度)	Hong Kong Imports and Exports Classification List		
二零零二年版 (特刊)	(Harmonized System) 2002 Edition ( <i>ad hoc</i> )		
第一冊: 第一至第 類貨物	Volume One: Commodity Section I - X	24.0	40.4
第二冊: 第 一至第二 二類貨物	Volume Two: Commodity Section XI - XXII	26.0	42.4
第三冊: 按字母次序排列的貨物目錄	Volume Three: Alphabetical List of Articles	28.0	44.4

名稱	Title	售價不包括 郵費(港元) Price Not Including Postage (HK\$)	售價連本地 郵費(港元) Price Including Local Postage (HK\$)
<b>(一) 刊物 (續)</b>	<b>(A) Publications (Cont'd.)</b>		
<b>統計分類表 (續)</b>	<b>Classification Lists (Cont'd)</b>		
香港商品貿易統計分類表二零零二年版 (特刊)	Hong Kong Merchandise Trade Statistics Classification 2002 Edition (ad hoc)	62.0	78.4
香港標準行業分類 (第一冊) (特刊)++	Hong Kong Standard Industrial Classification (Volume One) (ad hoc)++	135.0	163.0
<b>統計發展報告</b>	<b>Report on Statistical Development</b>		
統計發展概要, 二零零三年版 (年刊)	An Outline of Statistical Development, 2003 Edition (annual)	44.0	52.2
<b>(二) 唯讀光碟產品</b>	<b>(B) CD-ROM Products</b>		
<b>二零零一年人口普查</b>	<b>2001 Population Census</b>		
- <b>統計表唯讀光碟 (不定期) ++</b> 載有372個常用統計表, 有關統計表涉及的主題廣泛, 包括人口、住戶、教育、經濟、房屋、內部遷移及人口分組等本港住戶及人口特徵。選定統計表亦載列按區議會分區 / 選區及規劃統計小區 / 街段劃分的統計數字。	- <b>TAB on CD-ROM (ad hoc) ++</b> Contains 372 commonly used statistical tables. The tables cover a wide range of topics including demographic, household, education, economic, housing, internal migration and home moving, and population sub-group characteristics of the households and population in Hong Kong. There are also geographical breakdown of the statistics by District Council District/Constituency Area and Tertiary Planning Unit/Street Block in selected tables.	1,690.0	1,711.2
- <b>地圖唯讀光碟 (不定期)</b> 以常用的格式提供一套數碼化的香港地圖, 內載的地域分界數碼地圖包括香港海岸線、區議會分區 / 選區分界、規劃統計小區 (及其合併組) 分界、街段 - 小合併組分界及新市鎮分界。配合適當的電腦軟件, 這套數碼地圖可把載於《二零零一年人口普查 - 統計表唯讀光碟》內的統計數據作地理顯示之用。	- <b>MAP on CD-ROM (ad hoc)</b> Contains a set of digital maps of Hong Kong in commonly used formats. The digital maps for geographical delineation included therein are Coastline of Hong Kong, District Council District/Constituency Area Boundary, Tertiary Planning Unit (and Groupings) Boundary, Small Street Block Group Boundary and New Town Boundary. When used with suitable computer software, the digital maps can be used for geographical presentation of the statistical data contained in the 2001 Population Census - TAB on CD-ROM.	840.0	857.0
關於購買以上兩套光碟事宜, 請致電人口統計組 (電話: (852) 2716 8025)。	Please call the Demographic Statistics Section at (852) 2716 8025 for matters relating to the purchase of the above two sets of CD-ROM.		
- <b>普查易2001 (不定期)</b> 普查易2001人口普查光碟套裝是一套功能強大的知識為本產品, 它能幫助使用者有效地進行客戶資訊分析和客戶關係管理的工作。普查易2001光碟內載有超過400個由政府統計處提供的香港二零零一年人口普查統計表, 分區數碼地圖及功能超卓的地理訊息系統, 當中包含了全香港居民的人口特徵、經濟、教育、住戶、房屋等統計數據, 使用者可以透過簡單和容易使用的功能介面, 來選擇和提取資料。	- <b>Hong Kong CensusPro 2001 (ad hoc)</b> CensusPro 2001 GIS CD-ROM Package is a powerful knowledge-based product that enables users to perform customer profiling and Customer Relationship Management (CRM) easily and efficiently. CensusPro 2001 includes over 400 statistical tables of the Hong Kong 2001 Population Census provided by the Census and Statistics Department, digital boundary maps, and the superb Geographical Information System (GIS) functions and features. Statistical data on the demographic, economic, education, household and housing characteristics of the population are included and can be easily selected and retrieved through intuitive and easy-to-use application interface. CensusPro 2001 provides output in mainly 4 ways: thematic maps, formatted reports, bar/pie charts, and export files in dbf/Excel files/text files. CensusPro 2001 can be used in areas like strategic business/service planning, direct marketing and promotion, customer analysis and profiling, and many other business analysis purposes and applications.		這光碟產品由Info Mapping (Hong Kong) Limited生產及銷售。有關查詢及訂購, 請直接與該公司聯絡。(電話: (852) 2779 6088)。 This CD-ROM is produced and marketed by the Info Mapping (Hong Kong) Limited. For enquiries and purchase, please contact the company direct at (852) 2779 6088.
普查易2001共有4種資料輸出模式: 主題性地圖、預設格式報表、統計圖表、及檔案匯出 (支援數據庫/試算表/純文字等格式)。普查易2001光碟可應用於規劃業務策略、直接市場推廣或宣傳、客戶資料分析、以及作其他的商業性分析等。			

名稱	Title	售價不包括	售價連本地
		郵費(港元) Price Not Including Postage (HK\$)	郵費(港元) Price Including Local Postage (HK\$)
<b>(二) 唯讀光碟產品(續)</b>	<b>(B) CD-ROM Products (Cont'd.)</b>		
<b>二零零一年人口普查(續)</b>	<b>2001 Population Census (Cont'd)</b>		
- <i>SUPERMAP Hong Kong 2001 (不定期)</i>	- <i>SUPERMAP Hong Kong 2001 (ad hoc)</i>		
<ul style="list-style-type: none"> <li>涵蓋全面的人口普查數據, 配合最新數碼地圖作介面</li> <li>採用具世界領導地位之地理信息系統進行處理及分析</li> <li>可作多重圖像化分析人口普查數據</li> <li>有助機構進行深入的市場及客戶資訊分析</li> </ul>	<ul style="list-style-type: none"> <li>Covers comprehensive population census datasets with the use of the latest digital maps as interface</li> <li>Manipulates and analyses through employing world leading Geographical Information System (GIS) technology</li> <li>Provides multiple views of population census data</li> <li>Helps organizations with in-depth market analysis or customer profiling through data linkage</li> </ul>	<p>) 這些光碟產品由數碼門有限公司生產及銷售, 有關查詢及訂購, 請直接與該公司聯絡 (電話: (852) 2811 0079)。</p> <p>) These CD-ROMs are produced and marketed by Smartal Solutions Limited. For enquiries and purchase, please contact the company direct at (852) 2811 0079.</p>	<p>) 這些光碟產品由數碼門有限公司生產及銷售, 有關查詢及訂購, 請直接與該公司聯絡 (電話: (852) 2811 0079)。</p> <p>) These CD-ROMs are produced and marketed by Smartal Solutions Limited. For enquiries and purchase, please contact the company direct at (852) 2811 0079.</p>
<b>對外商品貿易</b>	<b>External Merchandise Trade</b>		
- <i>香港對外商品貿易唯讀光碟</i>	- <i>Hong Kong External Merchandise Trade CD-ROM</i>		
<p>列載過去二 四個月的按月貿易統計數字及過往八年的按年貿易統計數字 (按年數字只載於周年報), 並包括按貨品類別 (《標準國際貿易分類 (第三次修訂版)》或《協調制度》)、國家/地區及運輸方式劃分的詳細貿易統計數字。</p>	<p>Contains monthly trade data for past 24 months and annual trade data for past 8 years (annual figures are only available in the annual edition). Detailed statistics classified by commodity (using the "Standard International Trade Classification (Revision 3)" or the "Harmonized System"), by country/territory and by mode of transport are also included.</p>		
- <i>香港船務統計唯讀光碟 (按季產品)</i>	- <i>Hong Kong Shipping Statistics CD-ROM (quarterly)</i>		
<p>列載自一九九三年以來, 按運輸方式、裝運種類、裝貨/卸貨國家/地區及港口、貨品、貨物種類、貨物裝卸地點及與中國內地有關的轉運劃分的貨物及載貨貨櫃吞吐量統計數字。</p>	<p>Contains data back-dated to 1993 on cargo and laden container throughput statistics analysed by mode of transport, shipment type, country/territory and port of loading/discharge, commodity cargo type, cargo handling location and transshipment related to the mainland of China.</p>		

註釋: 除另有註明外, 所有刊物均以中、英文對照形式出版。獲取刊物的方法載於下頁。

Notes: Unless otherwise specified, all publications are published in bilingual format. Means of obtaining the publications are given in the following page.

\*\* 由二零零三年五月號起, 《香港統計月刊》的五個選定章節(目前只提供下載版)可在網上「香港統計數據書店」(網址: <http://www.statisticalbookstore.gov.hk>)購買。有關詳情, 請瀏覽該書店內「《香港統計月刊》的選定章節」一節。

\*\* As from the May 2003 issue, five selected sections of the *Hong Kong Monthly Digest of Statistics*, currently available in softcopy only, can be purchased at the online "Statistical Bookstore, Hong Kong" (Address: <http://www.statisticalbookstore.gov.hk>). For details, please visit the "Selected Sections of Hong Kong Monthly Digest of Statistics (HKMDS)" section of the Bookstore.

++ 分別備有中文版和英文版。

++ Available in separate Chinese and English versions.

+ 祇有英文版。

+ Available in English version only.

## 期刊的郵費不相同, 請致電政府統計處貿易統計資料發布組查詢(電話: (852) 2582 4917)。

## Postage varies among issues, please call the Trade Statistics Dissemination Section of the Census and Statistics Department at (852) 2582 4917.

§ 本刊物的印刷版亦於部分郵局出售(查詢熱線: (852) 2921 2222)。

§ Hardcopy of this publication is also put for sale at selected Post Offices (enquiry hotline: (852) 2921 2222).

所列售價及郵費日後或有修訂。外地郵費將於收到訂購要求後另行通知。

All quoted prices and postages are subject to revision. Postage for external mailings will be advised upon receipt of orders.

有關政府統計處刊物及其他統計產品的最新資料, 請瀏覽本處網站內「產品及服務」一節(網址: [http://www.info.gov.hk/censtatd/chinese/prod\\_serv/index.html](http://www.info.gov.hk/censtatd/chinese/prod_serv/index.html))或致電刊物出版組查詢(電話: (852) 2582 3025)。

For up-to-date information of the publications and other statistical products of the Census and Statistics Department, please visit the "Products & Services" section on the website of the department (Address: [http://www.info.gov.hk/censtatd/eng/prod\\_serv/index.html](http://www.info.gov.hk/censtatd/eng/prod_serv/index.html)) or call the Publications Unit of the department at (852) 2582 3025.

## 獲取政府統計處刊物的方法

### Means of Obtaining Publications of the Census and Statistics Department

#### 網上銷售服務

互聯網用戶可在「香港統計數據書店」(網址：<http://www.statisticalbookstore.gov.hk>)購買刊物，並即時付款。購買刊物的下載版可即時從網上下載，而購買印刷版則會以郵遞方式送達。用戶亦可於網上安排訂閱期刊或行將出版的刊物。除刊物外，一些較刊物所載統計數據更詳細的統計表亦於網上書店有售。「香港統計數據書店」與其他公共服務集中設於「公共服務電子化」計劃(ESD)的入門網站內(網址：<http://www.esd.gov.hk>)。

由即日起至二零零四年二月二十九日止，在「香港統計數據書店」選購指定刊物，可享有七五折優惠。

#### 郵購服務

大部分政府統計處的刊物均附有郵購表格，供訂購或按期訂閱刊物的印刷版。填妥的郵購表格可連同支付所需費用和郵費的支票或匯票寄回。郵購表格亦可從政府統計處網站下載(網址：[http://www.info.gov.hk/censtatd/chinese/prod\\_serv/forms\\_index.html](http://www.info.gov.hk/censtatd/chinese/prod_serv/forms_index.html))。

#### 銷售中心

香港灣仔港灣道 二號  
灣仔政府大樓 九樓  
政府統計處刊物出版組  
電話：(852) 2582 3025  
圖文傳真：(852) 2827 1708

市民可親臨政府統計處刊物出版組購買刊物的印刷版，並可即時提取，或在此訂購刊物或統計表的下載版，然後於網上提取。該組設有一個閱讀區，讓使用者在舒適的環境下翻閱陳列於架上的各類統計處出版的刊物。閱讀區也備有統計處的免費刊物，歡迎索閱。

#### Online Purchase

Internet users may purchase the publications online at the "Statistical Bookstore, Hong Kong" (Address : <http://www.statisticalbookstore.gov.hk>) with payment made instantly. Softcopies of the publications purchased are available for immediate downloading while hardcopies purchased will be delivered by mail. Subscription to regular publications and advance ordering of upcoming releases are also available. Apart from publications, softcopies of statistical tables containing more detailed statistics than those in publications are also available for sale. The Statistical Bookstore is hosted on the ESD portal (Address : <http://www.esd.gov.hk>) together with other public services.

From now until 29 February 2004, the Statistical Bookstore is offering a special 25% discount on selected publications.

#### Mail Order Service

A mail order form for ordering or arranging subscription to hardcopies of the publications is available in most publications of the Census and Statistics Department. It may be completed and sent back together with a cheque or bank draft covering all necessary cost and postage. The order form is also available for downloading from the website of the Department (Address : [http://www.info.gov.hk/censtatd/eng/prod\\_serv/forms\\_index.html](http://www.info.gov.hk/censtatd/eng/prod_serv/forms_index.html)).

#### Sales Centre

Publications Unit  
Census and Statistics Department  
19/F Wanchai Tower  
12 Harbour Road  
Wan Chai, Hong Kong  
Tel. : (852) 2582 3025  
Fax : (852) 2827 1708

Hardcopies of the publications are available for purchase and can be collected on the spot at the Unit. The Unit also accepts orders for softcopies of publications and statistical tables, which will be delivered online. It provides a comfortable reading area where users may browse through various publications of the Department on display. Free publications of the Department are also available for collection.

# 郵購表格 (只適用於印刷版)<sup>(1)</sup>

致：香港花園道 美利大廈4樓 政府新聞處 刊物銷售小組 電話：(852) 2842 8844 或 (852) 2842 8845 圖文傳真：(852) 2598 7482	售價			請註明 刊期(月份/季/ 期號及年份)		合計 所需的 期數 (b)	總計 (港元) (a) x (b)
	每本 (港元)	本地 郵費 ( <sup>2</sup> )及( <sup>3</sup> ) (港元)	合計 (港元) (a)	由	至		
1. 香港統計月刊 (二零零四年期刊) (J470004 B0)	65.0	16.5	81.5	/2004	12/2004		
2. 香港經濟趨勢 (二零零四年期刊) (半月刊) (J410004 B0)	12.0	3.0	15.0	/2004	24/2004		
3. 香港統計年刊 (二零零三年版) (J47010300B0)	74.0	28.0	102.0	-	-		
4. 香港社會及經濟趨勢 (二零零一年版) (雙年刊) (J57290100B0)	84.0	16.4	100.4	-	-		
5. 統計發展概要 (二零零三年版) (年刊) (J33110300B0)	44.0	8.2	52.2	-	-		
6. 香港的發展 (1967-2002) - 統計圖表集 (J69090300B0)	38.0	16.4	54.4	-	-		
7. 二零零二年工商業創新活動按年統計 報告 (J69080200B0)	32.0	8.2	40.2	-	-		
8. 二零零三年經理及行政級與專業僱員 薪金及僱員福利統計報告 (高層管理人員除外) (J55050300B0)	20.0	4.4	24.4				
9.							

本人現附上支票 (編號： ) 港幣 元，購買上述刊物。  
(註：支票應予劃線，並註明支付「香港特別行政區政府」。)

姓名： \_\_\_\_\_ 職銜： \_\_\_\_\_  
 機構名稱： \_\_\_\_\_ 地址： \_\_\_\_\_  
 電話： \_\_\_\_\_ 圖文傳真： \_\_\_\_\_  
 日期： \_\_\_\_\_

- 註： (1) 如欲訂購或定期訂閱本處出版刊物的下載版，請到網上「香港統計數據書店」  
(<http://www.statisticalbookstore.gov.hk>)。  
 (2) 外地訂購人士暫時毋須附上支票，所需郵費將於收到訂購要求後另行通知。  
 (3) 訂購超過一本相同名稱的年刊或特刊，請向政府新聞處查詢所需本地郵費 (電話：(852) 2842 8844  
或 (852) 2842 8845，圖文傳真：(852) 2598 7482)。

你在表格上所提供的資料，只會用作辦理書刊訂購事宜，不會向任何和訂購無關的人士透露。如欲查看或更改所填報的資料，請與政府新聞處刊物銷售小組聯絡。地址：香港花園道美利大廈4樓。



# Mail Order Form (Applicable to hardcopies only) <sup>(1)</sup>

	To : Publications Sales Section Information Services Department 4/F, Murray Building Garden Road Hong Kong Tel. : (852) 2842 8844 or (852) 2842 8845 Fax : (852) 2598 7482	Price			Please indicate Month/Quarter/ Issue no. and Year		Total no. of issue(s) required (b)	Total amount (HK\$) (a) x (b)
		Per copy (HK\$)	Local postage (2) & (3) (HK\$)	Total (HK\$) (a)	From	To		
1.	Hong Kong Monthly Digest of Statistics 2004 issues (J470004 B0)	65.0	16.5	81.5	/2004	12/2004		
2.	Hong Kong Economic Trends 2004 issues (half-monthly) (J410004 B0)	12.0	3.0	15.0	/2004	24/2004		
3.	Hong Kong Annual Digest of Statistics 2003 edition (J47010300B0)	74.0	28.0	102.0	-	-		
4.	Hong Kong Social and Economic Trends 2001 edition (biennial) (J57290100B0)	84.0	16.4	100.4	-	-		
5.	An Outline of Statistical Development 2003 edition (annual) (J33110300B0)	44.0	8.2	52.2	-	-		
6.	A Graphic Guide on Hong Kong's Development (1967-2002) (J69090300B0)	38.0	16.4	54.4	-	-		
7.	Report on 2002 Annual Survey of Innovation Activities in the Business Sector (J69080200B0)	32.0	8.2	40.2	-	-		
8.	2003 Report of Salaries and Employee Benefits Statistics Managerial and Professional Employees (Excluding Top Management) (J55050300B0)	20.0	4.4	24.4				
9.								

I enclose a cheque (No. \_\_\_\_\_) of HK\$ \_\_\_\_\_ for the payment of the above order. (Note : Please have the cheque crossed and made payable to 'The Government of the Hong Kong Special Administrative Region' or 'The Government of the HKSAR'.)

Name : \_\_\_\_\_ Title of post : \_\_\_\_\_

Name of organization : \_\_\_\_\_ Address : \_\_\_\_\_

Tel. : \_\_\_\_\_ Fax : \_\_\_\_\_

Date : \_\_\_\_\_

- Notes:
- (1) For ordering or arranging subscription to softcopies, please visit the online "Statistical Bookstore, Hong Kong" (<http://www.statisticalbookstore.gov.hk>).
  - (2) For mailings to addresses outside Hong Kong, please do not send in a cheque now. The required postage will be advised upon receipt of order.
  - (3) For an order of more than one copy of an annual or ad hoc publication with the same title, please consult the Information Services Department about the required local postage. (Tel.: (852) 2842 8844 or (852) 2842 8845, Fax: (852) 2598 7482).

The information provided herein will only be used for processing your order of publications and will not be disclosed to parties which are not involved in the processing. You may seek access to or correction of the information by addressing your request to the Publications Sales Section, *Information Services Department, 4/F, Murray Building, Garden Road, Hong Kong.*







訂閱表格<sup>(1)</sup>  
香港統計月刊(二零零四年期刊)

Subscription Form<sup>(1)</sup>

Hong Kong Monthly Digest of Statistics (2004 Issues)

致：香港灣仔港灣道 二號  
灣仔政府大樓 九樓  
政府統計處綜合統計組(一)乙  
電話：(852)2582 3025 圖文傳真：(852)2827 1708

To: General Statistics Section (1) B,  
Census and Statistics Department  
19/F., Wanchai Tower,  
12 Harbour Road, Wan Chai, Hong Kong.  
Tel.: (852) 2582 3025 Fax: (852) 2827 1708

請在適當空格(□)內加上(√)號。Please tick(√) in the appropriate box(□). (港元 HK\$)

刊物名稱 Title of Publication	每本 售價 Price per copy	每本 本地郵費 Local postage (2)&(3)	每本 合計 Total price (a)	期數 No. of issues (b)	總計 Total amount (a) x (b)
<input type="checkbox"/> 香港統計月刊 二零零四年期刊一月至 二月(共 二期) Hong Kong Monthly Digest of Statistics, 2004 January to December 2004 (total 12 issues)	65.0	16.5	81.5	12	978.0
<input type="checkbox"/> 香港統計月刊 二零零四年期刊____月至十二月(共____期) Hong Kong Monthly Digest of Statistics, 2004 _____to December 2004 (total _____ issues)	65.0	16.5	81.5		
<input type="checkbox"/>					
合計 Total					

本人現附上支票(編號：\_\_\_\_\_)港幣\_\_\_\_\_元，購買上述刊物。  
I enclose a cheque (No. \_\_\_\_\_) of HK\$ \_\_\_\_\_ for the payment of the above order.

註：支票應予劃線，並註明支付「香港特別行政區政府」。

Note: Cheque should be crossed and made payable to 'The Government of the Hong Kong Special Administrative Region' or 'The Government of the HKSAR'.

訂戶資料 Subscriber's Information

姓名 Name: \_\_\_\_\_ 機構名稱 Name of organization: \_\_\_\_\_  
職銜 Title of post: \_\_\_\_\_ 地址 Address: \_\_\_\_\_  
部門 Department: \_\_\_\_\_  
電話 Tel.: \_\_\_\_\_  
圖文傳真 Fax: \_\_\_\_\_ 日期 Date: \_\_\_\_\_

機構主要從事業務類別 Major type of business of organization:

- 進出口貿易業 Import/export trade  建造業 Construction  
 零售貿易業 Retail trade  金融、保險及地產業 Financing, insurance and real estate  
 製造業 Manufacturing  商用服務業 Business services  
 教育機構 Educational institution  社區、社會及個人服務業 Community, social and personal services  
 其他，請註明 Others, please specify \_\_\_\_\_

讀者類別(可選多項) Type of readers (more than one choice allowed):

- 經理 Manager  市場、推廣部人員 Marketing / promotional personnel  
 分析員、研究員 Analyst / researcher  教師、大專院校講師 Teaching staff / lecturer  
 學生 Student  其他，請註明 Others, please specify \_\_\_\_\_

訂戶類別 Type of subscriber:

- 機構 Organization  私人 Individual

你是否願意收到本處推廣其他刊物的資料? Do you want to receive promotional materials of other publications of this department?

- 是 Yes  否 No

HKMDS

註：(1) 只適用於訂閱印刷版。二零零四年期號的《香港統計月刊》下載版定價為每期港幣48.8元，如欲訂閱，請到網上「香港統計數據書店」  
Notes: (http://www.statisticalbookstore.gov.hk).

Applicable to subscription to hardcopies only. Softcopy of the 2004 issues of the *Hong Kong Monthly Digest of Statistics* is available at HK\$48.8 per issue. For arranging subscription to softcopies, please visit the online "Statistical Bookstore, Hong Kong" (http://www.statisticalbookstore.gov.hk).

(2) 外地訂購人士暫時毋須附上支票，所需郵費將於收到訂購要求後另行通知。

For mailings to addresses outside Hong Kong, please do not send in a cheque now. The required postage will be advised upon receipt of order.

(3) 訂閱超過一本相同名稱及期號的刊物，請向政府新聞處查詢所需本地郵費(電話：(852) 2842 8844 或 (852) 2842 8845，圖文傳真：(852) 2598 7482)。

For arranging subscription to more than one copy per issue with the same title, please consult the Information Services Department about the required local postage. (Tel.: (852) 2842 8844 or (852) 2842 8845, Fax: (852) 2598 7482).

你在表格上所提供的資料，只會用作辦理書刊訂購事宜，不會向任何和訂購無關的人士透露。如欲查看或更改所填報的資料，請與政府統計處的資料管理人員聯絡。地址：香港灣仔港灣道 二號灣仔政府大樓二 一樓。

The information provided herein will only be used for processing your order of publications and will not be disclosed to parties which are not involved in the subscription of these publications. You may seek access to or correction of the information by addressing your request to the Data Controlling Officer, Census and Statistics Department, 21/F, Wanchai Tower, 12 Harbour Road, Wan Chai, Hong Kong.

# 資料豐富圖表簡潔 香港發展一目了然

Informative, Easy-to-read, A graphic guide that reviews Hong Kong's development



## 香港的發展(1967-2002)統計圖表集

### A Graphic Guide on Hong Kong's Development (1967-2002)



中華人民共和國  
香港特別行政區 政府統計處  
Census and Statistics Department  
Hong Kong Special Administrative Region  
People's Republic of China

一本為政府統計處於  
2002年紀念成立  
35周年而出版的特刊

A publication dedicated to the  
commemoration of the 35<sup>th</sup>  
Anniversary of the Census and  
Statistics Department in 2002

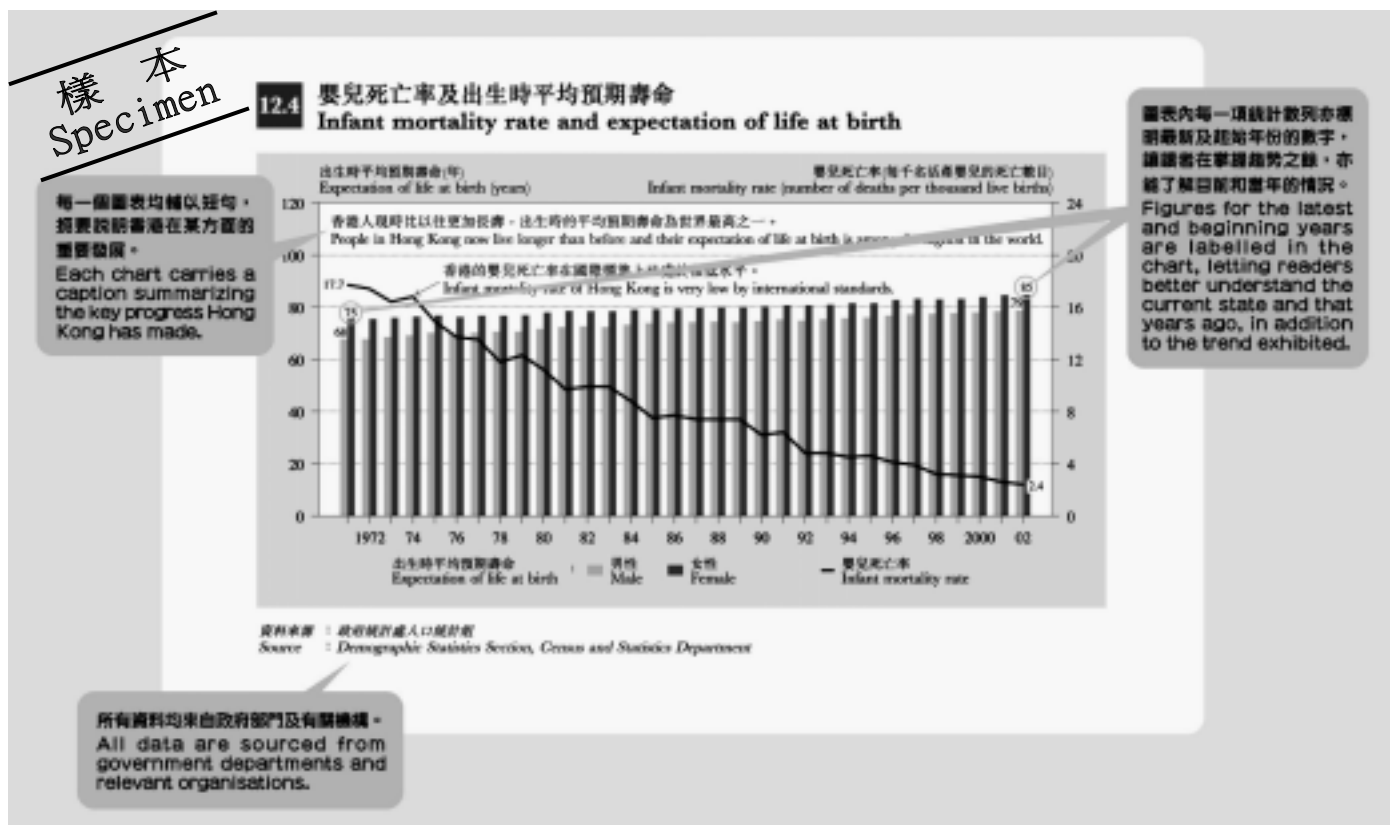
## 香港的發展 (1967-2002) – 統計圖表集

### A Graphic Guide on Hong Kong's Development (1967 – 2002)

備有印刷版及下載版  
每本售價\$38

Available in both hardcopy and softcopy  
at \$38 per copy

- |   |  |
|---|--|
| <ul style="list-style-type: none"> <li>➢ 全書以中、英文對照形式出版，全彩色印刷，分為 16 節，共輯錄了約 140 個統計圖表，記載香港社會在過去 35 年來的變遷，能引發讀者深思香港社會在多個範疇的轉變。</li> <li>✓ 人口及生命事件</li> <li>✓ 勞工</li> <li>✓ 工資及收入</li> <li>✓ 國民收入及國際收支平衡</li> <li>✓ 對外貿易</li> <li>✓ 工商業</li> <li>✓ 政府收支、貨幣、金融</li> <li>✓ 運輸、通訊及旅遊</li> </ul> | <ul style="list-style-type: none"> <li>➢ Collecting some 140 statistical charts presented in bilingual format and grouped into 16 sections, this full-colour Graphic Guide provides a fascinating insight into the many changes in the whole fabric of Hong Kong's society over the past 35 year.</li> <li>✓ Population and Vital Events</li> <li>✓ Labour</li> <li>✓ Wages and Earnings</li> <li>✓ National Income and Balance of Payments</li> <li>✓ External Trade</li> <li>✓ Commerce and Industry</li> <li>✓ Public Accounts, Money and Finance</li> <li>✓ Transport, Communications and Tourism</li> </ul> |
| <ul style="list-style-type: none"> <li>✓ 消費物價及住戶開支</li> <li>✓ 房屋及物業</li> <li>✓ 教育</li> <li>✓ 衛生</li> <li>✓ 社會福利</li> <li>✓ 公共秩序及安全</li> <li>✓ 環境</li> <li>✓ 雜項統計</li> </ul>   | <ul style="list-style-type: none"> <li>✓ Consumer Prices and Household Expenditure</li> <li>✓ Housing and Property</li> <li>✓ Education</li> <li>✓ Health</li> <li>✓ Social Welfare</li> <li>✓ Public Order and Safety</li> <li>✓ The Environment</li> <li>✓ Miscellaneous</li> </ul>  |
- 本書所載統計圖表一覽，上載於 <http://www.info.gov.hk/censtatd/chinese/graphicguide.html>
- For a complete list of charts included, please visit <http://www.info.gov.hk/censtatd/eng/graphicguide.html>



有關這本統計圖表集的銷售途徑，請參閱本刊物內第 A10 頁。郵購表格刊載於第 A11 頁。此外，這本統計圖表集亦於部分郵局出售（查詢熱線：(852) 2921 2222）。如有其他查詢，請致電(852) 2582 4733。

For the purchase channels of this Graphic Guide, please see page A10 of this publication. A mail order form is available on page A12. The Graphic Guide is also put for sale at selected Post Offices (enquiry hotline: (852) 2921 2222). For other enquiries, please call (852) 2582 4733.

# 二零零三年經理級與專業僱員 薪金及僱員福利統計報告

(高層管理人員除外)

## 2003 Report of Salaries and Employee Benefits Statistics Managerial and Professional Employees (Excluding Top Management)

一份有關中層經理級與專業僱員薪金及附帶福利統計數字的詳盡報告，內容包括：

- 私人公司僱員於二零零三年的平均薪金變動
- 五個主要經濟行業類別中各主要職業的薪金指數
- 超過八十個職業的每月薪金資料
- 僱員可享有各種附帶福利的分析

提供有用的參考資料作以下用途：

- 釐定薪金調整幅度
- 評估勞工市場的競爭力
- 擬訂有關薪酬及附帶福利的政策
- 薪酬協商
- 估計勞工成本
- 經濟分析

A comprehensive report on salaries and fringe benefits in respect of middle-level managerial and professional employees covering:

- average rates of salary changes in private companies in 2003
- salary indices for principal occupations in five major economic sectors
- monthly salary statistics of over 80 occupations
- entitlement to various fringe benefits

Useful reference for:

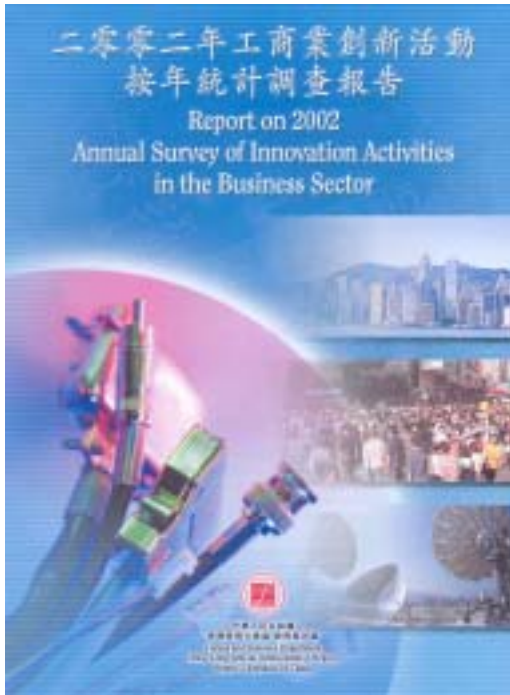
- making salary adjustment
- assessing competitiveness in the labour market
- formulating pay and fringe benefits policies
- pay negotiation
- estimating labour cost
- economic analysis



有關刊物的銷售途徑，請參閱本月刊內第A10頁。此外，刊物的訂閱表格亦刊載於A11頁。  
For the purchase channels of the publication, please see page A10 of this Digest. A subscription form is also available on page A12 for ordering the publication.

## 二零零二年工商業創新活動 按年統計調查報告現已出版

### Report on the 2002 Annual Survey of Innovation Activities in the Business Sector is now published



本報告書刊載二零零二年工商業用於內部研究及發展和創新活動的統計數字，並載有關於創新活動的各項分析，包括：技術創新活動對工商業的影響、進行技術創新活動的資訊來源、阻礙技術創新的因素，及非技術創新活動如重要的策略和架構改變。

This report contains statistics on Research and Development (R&D) and innovation activities in the business sector for 2002. It also contains analyses of the various aspects of innovation activities including the impact of technological innovation on businesses, source of information for undertaking technological innovation activities, barriers to technological innovation and non-technological innovation activities such as important strategic and organizational changes in the organisations.

有關本報告書的銷售途徑，請參閱本月刊內第A10頁。此外，本報告書的郵購表格亦刊載於第A11頁。  
*For the purchase channels of this report, please see page A10 of this Digest. A mail order form is also available on page A12 for ordering this report.*

