

香 港 統 計 月 刊

Hong Kong Monthly Digest of Statistics

二零零七年七月
July 2007

專題文章
Feature Article

一九九七年至二零零六年香港道路交通意外統計

Road Traffic Accident Statistics in Hong Kong, 1997 to 2006

一九九七年至二零零六年香港道路交通意外統計

Road Traffic Accident Statistics in Hong Kong, 1997 to 2006

在二零零六年香港平均每天發生 41 宗道路交通意外，當中涉及 52 名傷亡者及 61 部車輛。根據由香港警務處搜集及由運輸署管理的道路交通意外數據，本文描述在一九九七年至二零零六年期間道路交通意外的趨勢。

On average, there were 41 road traffic accidents each day in Hong Kong in 2006, involving 52 casualties and 61 vehicles. Based on the road traffic accident data collected by the Hong Kong Police Force and maintained by the Transport Department, this article presents the trends of road traffic accidents in the period 1997 to 2006.

如對本文有任何查詢，請致電運輸署統計組（電話：3150 8211）。

If you have any enquiries on this article, please call Statistics Section, Transport Department (Tel.: 3150 8211).

一九九七年至二零零六年香港道路交通意外統計

Road Traffic Accident Statistics in Hong Kong, 1997 to 2006

1. 引言

1.1 香港的道路交通意外數據由香港警務處搜集，而運輸署的道路安全及標準研究部則將資料存於其負責管理的交通意外資料庫內。數據用作確定道路交通意外的趨勢，以便制訂交通安全策略、設計宣傳及教育計劃，及持續檢討道路安全標準及法例條文。數據亦有助找出交通意外黑點及進行交通意外研究。

1.2 本文所指的道路交通意外只包括向警方報案而涉及傷亡的交通事故。換言之，只牽涉損毀物件的交通意外不包括在內。一宗交通意外可視乎傷亡者的受傷程度而劃分為輕微、嚴重及致命意外。致命意外是指在意外中有一位或多位人士於發生意外後的三十日內死亡。在非致命意外中，如意外引致一位或多位受傷人士在醫院逗留超過十二小時，將被劃分為嚴重意外。如意外中所有被涉及人士均不需留院或只留院不超過十二小時，則被劃分為輕微意外。

1.3 每宗交通意外會涉及道路使用者和車輛。道路使用者指行人和車輛使用者（包括駕駛者及乘客）。牽涉車輛包括受傷的駕駛者或乘客所乘坐的車輛、撞倒行人或物件的車輛、或被撞的車輛。

1.4 本文描述在過去十年期間有關道路交通傷亡者和意外數字的趨勢，以及涉及的道路使用者和車輛的特徵。

1. Introduction

1.1 Road traffic accident data in Hong Kong are collected by the Hong Kong Police Force and maintained by the Road Safety and Standards Division of the Transport Department in its Traffic Accident Database System. The data are used to identify traffic accident trends for formulation of road safety strategies, design of publicity and education programmes, and on-going review of road safety standards and legislative provisions. They also support the identification of locations of traffic accident black spots and the traffic accident research work.

1.2 A road traffic accident in this article refers to a traffic incident which is reported to the Police and involves personal injuries. In other words, damage-only traffic accidents are excluded. A traffic accident can be classified into slight, serious and fatal, depending on the degree of injury of the casualties. A fatal accident is one in which one or more persons die within 30 days of the accident. For non-fatal accidents, they are classified as serious accidents if one or more persons are detained in hospitals for more than twelve hours, and as slight accidents if all persons involved are either not detained in hospitals or detained for not more than twelve hours.

1.3 Each traffic accident would involve road users and vehicles. Road users refer to pedestrians and vehicle users (including drivers, riders and passengers). The vehicles involved are vehicles whose drivers or passengers are injured, or which hit a pedestrian or an object, or which are hit by another vehicle.

1.4 This article presents the trends of road traffic casualties and accidents in the past ten years, and the characteristics of road users and vehicles involved.

2. 道路交通傷亡者的趨勢

2.1 自一九九七年起，交通意外死亡人數逐步下降。在交通意外死亡的人數，由一九九七年的 241 人下降至二零零六年的 144 人（即平均每周三人）。這導致死亡率（以每千宗意外的死亡人數計）由一九九七年的 16.3 下降至二零零六年的 9.7，而每一百萬人口中交通意外死亡人數，同期間亦由 37.1 下降至 21.0。重傷者的數目亦由一九九七年的 3 599 人下跌至二零零六年的 2 508 人，然而，輕傷者的數目則在這期間由 15 953 人上升至 16 221 人。（表一及圖一）

2. Trend of Road Traffic Casualties

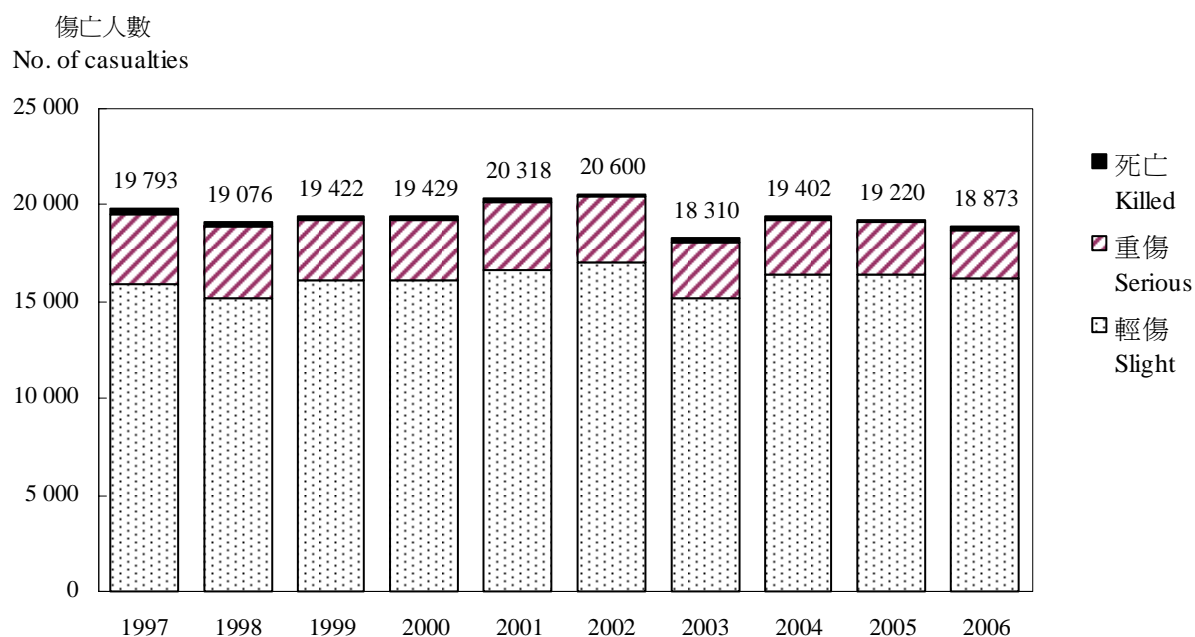
2.1 There was a general downward trend on the number of killed casualties in traffic accidents since 1997. The number of killed casualties dropped from 241 in 1997 to 144 in 2006 (on average three per week), bringing the fatality rate (in terms of the number of killed casualties per 1 000 accidents) down from 16.3 in 1997 to 9.7 in 2006 and the number of killed casualties per one million population from 37.1 to 21.0 during the same period. The number of serious injuries also fell, from 3 599 in 1997 to 2 508 in 2006. However, the number of slight injuries increased from 15 953 to 16 221 over the same period. (Table 1 and Chart 1)

表一 一九九七年至二零零六年按傷勢情況劃分的道路交通意外傷亡者數目、傷亡率及死亡率

Table 1 Road traffic accident casualties by degree of injury, casualty rates and fatality rates, 1997 to 2006

	1997	1998	1999	2000	2001	2002	2003	2004	2005	2006
(A) 傷亡人數 Number of casualties										
(i) 死亡者 Killed	241	221	217	171	173	171	202	166	151	144
(ii) 重傷者 Serious	3 599	3 627	3 116	3 155	3 517	3 426	2 951	2 803	2 688	2 508
(iii) 輕傷者 Slight	15 953	15 228	16 089	16 103	16 628	17 003	15 157	16 433	16 381	16 221
總傷亡人數 Total	19 793	19 076	19 422	19 429	20 318	20 600	18 310	19 402	19 220	18 873
(B) 傷亡率 Casualty rate										
(i) 每宗意外計 per accident	1.34	1.36	1.32	1.30	1.30	1.32	1.27	1.29	1.28	1.27
(ii) 每千名人口計 per 1 000 population	3.05	2.92	2.94	2.92	3.02	3.04	2.69	2.82	2.77	2.75
(iii) 每千部領牌車輛計 per 1 000 licensed vehicles	40.6	37.9	38.9	38.0	38.9	39.2	35.0	36.7	35.8	34.5
(C) 死亡率 Fatality rate										
(i) 每千名傷亡者計 per 1 000 casualties	12.2	11.6	11.2	8.8	8.5	8.3	11.0	8.6	7.9	7.6
(ii) 每千宗意外計 per 1 000 accidents	16.3	15.8	14.7	11.4	11.1	11.0	14.0	11.0	10.0	9.7
(iii) 每一百萬人口計 per 1 000 000 population	37.1	33.8	32.8	25.7	25.7	25.2	29.7	24.1	21.8	21.0
(iv) 每千登記死亡人數計 per 1 000 total registered deaths in HK	7.5	6.8	6.5	5.0	5.2	5.0	5.5	4.4	3.9	3.8
(v) 每千部領牌車輛計 per 1 000 licensed vehicles	0.49	0.44	0.43	0.33	0.33	0.33	0.39	0.31	0.28	0.26

圖一 一九九七年至二零零六年按傷勢情況劃分的道路交通意外傷亡數字
Chart 1 Road traffic accident casualties by degree of injury, 1997 to 2006



2.2 在二零零六年的18 873名交通意外傷亡者中，行人佔22.4%、乘客佔33.4%，司機則佔44.1%。在一九九七年至二零零六年期間，行人傷亡者佔全部交通意外傷亡者的比例有着下降的趨勢。（表二）

2.2 Of the 18 873 traffic accident casualties in 2006, 22.4% were pedestrians, 33.4% were passengers and 44.1% were drivers. The distribution showed that there was a downward trend on the proportion of pedestrian casualties among all traffic accident casualties over the period from 1997 to 2006. (Table 2)

2.3 按年齡組別分析，在二十歲以下的傷亡者中，乘客佔較大比例；而在六十歲及以上的傷亡者中，則以行人佔較大比例。相比之下，在年齡組別二十至三十九歲及四十至五十九歲的傷亡者中，駕駛者佔較大比例。（表二）

2.3 Analysed by age group, for casualties aged under 20, a higher proportion of them were passengers, while for those aged 60 and over, a higher proportion of them were pedestrians. In comparison, in the age groups 20 - 39 and 40 - 59, a higher proportion of casualties were drivers. (Table 2)

表二 一九九七年至二零零六年按年齡組別及道路使用者類別劃分的傷亡者數目
Table 2 Number of road traffic accident casualties by age group by class of road user, 1997 to 2006

年齡組別/道路使用者類別 Age group/class of road user	1997	1998	1999	2000	2001	2002	2003	2004	2005	2006
20歲以下 Under 20										
行人 Pedestrian	1 442 (7.3%)	1 450 (7.6%)	1 257 (6.5%)	1 203 (6.2%)	1 312 (6.5%)	1 189 (5.8%)	1 046 (5.7%)	994 (5.1%)	889 (4.6%)	888 (4.7%)
乘客 Passenger	1 561 (7.9%)	1 502 (7.9%)	1 353 (7.0%)	1 172 (6.0%)	1 277 (6.3%)	1 278 (6.2%)	1 017 (5.6%)	1 068 (5.5%)	1 018 (5.3%)	905 (4.8%)
駕車者 Driver	401 (2.0%)	424 (2.2%)	621 (3.2%)	577 (3.0%)	686 (3.4%)	687 (3.3%)	682 (3.7%)	765 (3.9%)	645 (3.4%)	634 (3.4%)
小計 Sub-total	3 404 (17.2%)	3 376 (17.7%)	3 231 (16.6%)	2 952 (15.2%)	3 275 (16.1%)	3 154 (15.3%)	2 745 (15.0%)	2 827 (14.6%)	2 552 (13.3%)	2 427 (12.9%)
20歲至39歲 20 - 39										
行人 Pedestrian	1 546 (7.8%)	1 330 (7.0%)	1 339 (6.9%)	1 311 (6.7%)	1 409 (6.9%)	1 384 (6.7%)	1 336 (7.3%)	1 369 (7.1%)	1 260 (6.6%)	1 168 (6.2%)
乘客 Passenger	3 576 (18.1%)	3 573 (18.7%)	3 258 (16.8%)	3 202 (16.5%)	3 301 (16.2%)	3 433 (16.7%)	2 678 (14.6%)	2 830 (14.6%)	2 746 (14.3%)	2 717 (14.4%)
駕車者 Driver	4 915 (24.8%)	4 590 (24.1%)	4 734 (24.4%)	4 829 (24.9%)	5 047 (24.8%)	4 996 (24.3%)	4 507 (24.6%)	4 513 (23.3%)	4 454 (23.2%)	4 554 (24.1%)
小計 Sub-total	10 037 (50.7%)	9 493 (49.8%)	9 331 (48.0%)	9 342 (48.1%)	9 757 (48.0%)	9 813 (47.6%)	8 512 (46.5%)	8 712 (44.9%)	8 460 (44.0%)	8 439 (44.7%)
40歲至59歲 40 - 59										
行人 Pedestrian	1 144 (5.8%)	1 030 (5.4%)	1 057 (5.4%)	1 085 (5.6%)	1 224 (6.0%)	1 182 (5.7%)	1 127 (6.2%)	1 209 (6.2%)	1 264 (6.6%)	1 242 (6.6%)
乘客 Passenger	1 470 (7.4%)	1 454 (7.6%)	1 519 (7.8%)	1 478 (7.6%)	1 788 (8.8%)	1 886 (9.2%)	1 597 (8.7%)	1 926 (9.9%)	1 861 (9.7%)	1 821 (9.6%)
駕車者 Driver	1 581 (8.0%)	1 647 (8.6%)	1 857 (9.6%)	2 047 (10.5%)	2 169 (10.7%)	2 399 (11.6%)	2 297 (12.5%)	2 575 (13.3%)	2 888 (15.0%)	2 875 (15.2%)
小計 Sub-total	4 195 (21.2%)	4 131 (21.7%)	4 433 (22.8%)	4 610 (23.7%)	5 181 (25.5%)	5 467 (26.5%)	5 021 (27.4%)	5 710 (29.4%)	6 013 (31.3%)	5 938 (31.5%)
60歲及以上 60 and over										
行人 Pedestrian	1 128 (5.7%)	1 097 (5.8%)	1 039 (5.3%)	1 013 (5.2%)	1 018 (5.0%)	1 031 (5.0%)	986 (5.4%)	960 (4.9%)	980 (5.1%)	917 (4.9%)
乘客 Passenger	719 (3.6%)	720 (3.8%)	773 (4.0%)	809 (4.2%)	825 (4.1%)	827 (4.0%)	748 (4.1%)	848 (4.4%)	926 (4.8%)	853 (4.5%)
駕車者 Driver	185 (0.9%)	198 (1.0%)	180 (0.9%)	190 (1.0%)	191 (0.9%)	234 (1.1%)	201 (1.1%)	243 (1.3%)	269 (1.4%)	263 (1.4%)
小計 Sub-total	2 032 (10.3%)	2 015 (10.6%)	1 992 (10.3%)	2 012 (10.4%)	2 034 (10.0%)	2 092 (10.2%)	1 935 (10.6%)	2 051 (10.6%)	2 175 (11.3%)	2 033 (10.8%)
年齡不詳 Unknown age	125 (0.6%)	61 (0.3%)	435 (2.2%)	513 (2.6%)	71 (0.3%)	74 (0.4%)	88 (0.5%)	102 (0.5%)	20 (0.1%)	36 (0.2%)
全部年齡組別[‡] All ages[‡]										
行人 Pedestrian	5 321 (26.9%)	4 933 (25.9%)	4 830 (24.9%)	4 785 (24.6%)	4 978 (24.5%)	4 805 (23.3%)	4 517 (24.7%)	4 577 (23.6%)	4 404 (22.9%)	4 233 (22.4%)
乘客 Passenger	7 366 (37.2%)	7 280 (38.2%)	7 153 (36.8%)	6 970 (35.9%)	7 244 (35.7%)	7 477 (36.3%)	6 104 (33.3%)	6 723 (34.7%)	6 557 (34.1%)	6 312 (33.4%)
駕車者 Driver	7 106 (35.9%)	6 863 (36.0%)	7 439 (38.3%)	7 674 (39.5%)	8 096 (39.8%)	8 318 (40.4%)	7 689 (42.0%)	8 102 (41.8%)	8 259 (43.0%)	8 328 (44.1%)
總計 Total	19 793 (100.0%)	19 076 (100.0%)	19 422 (100.0%)	19 429 (100.0%)	20 318 (100.0%)	20 600 (100.0%)	18 310 (100.0%)	19 402 (100.0%)	19 220 (100.0%)	18 873 (100.0%)

註釋：‡ 包括年齡不詳的傷亡者。

括號內的數字顯示在個別年齡／道路使用者組別中佔所有傷亡人數的百分比。

Notes : ‡ Including casualties with age unknown.

Figures in brackets represent the percentage share of the total number of casualties in the respective age/class of road user groups.

2.4 傷亡率（即每千名人口的傷亡者數目）隨年齡組別變化。在二零零六年，二十五至二十九歲人士的傷亡率最高，每千人有 4.8 人在交通意外中傷亡。其次是二十至二十四歲人士（4.2）及三十至三十四歲人士（4.0）。在過去十年，二十至二十四歲及二十五至二十九歲兩個年齡組別人士的傷亡率為最高，而二十歲以下人士和六十歲及以上人士的傷亡率則相對較低。（表三及圖二）

2.5 在一九九七年至二零零六年期間，除二十至二十四歲人士外，傷亡率在每個年齡組別均相對穩定。而二十至二十四歲人士的傷亡率，則由一九九七年的每千人有 6.6 人傷亡，持續下降至二零零六年的 4.2。（表三及圖二）

2.4 Casualty rate (i.e. the number of casualties per 1 000 population) varied across age groups. In 2006, persons aged 25 - 29 had the highest casualty rate, at 4.8 casualties per 1 000 population, followed by persons aged 20 - 24 (at 4.2) and those aged 30 - 34 (at 4.0). In the past decade, the highest casualty rates were recorded for persons aged 20 - 24 and 25 - 29, while the rates for those aged below 20 and for those aged 60 and over were relatively low. (Table 3 and Chart 2)

2.5 The casualty rates for almost all age groups were relatively stable during the period 1997 to 2006 except those for aged 20 - 24. It was noted that the casualty rate of persons aged 20 - 24 dropped continuously from 6.6 casualties per 1 000 population in 1997 to 4.2 in 2006. (Table 3 and Chart 2)

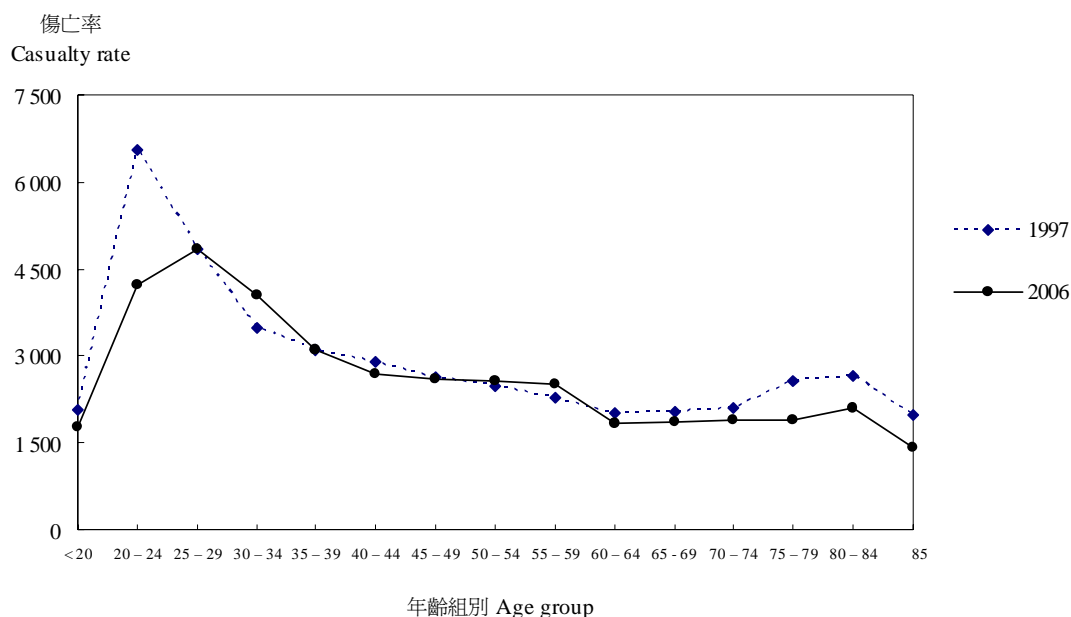
表三 一九九七年至二零零六年按年齡組別劃分的傷亡率⁽¹⁾
Table 3 Casualty rates⁽¹⁾ by age group, 1997 to 2006

年齡組別 Age group	1997	1998	1999	2000	2001	2002	2003	2004	2005	2006
0 - 19	2.1	2.1	2.0	1.9	2.1	2.1	1.9	2.0	1.8	1.8
20 - 24	6.6	6.0	5.9	5.9	5.9	5.7	4.8	4.7	4.4	4.2
25 - 29	4.8	4.6	4.8	4.9	5.2	5.6	5.1	5.3	5.0	4.8
30 - 34	3.5	3.6	3.5	3.4	3.7	3.8	3.4	3.7	3.8	4.0
35 - 39	3.1	2.9	2.9	2.9	3.1	3.2	2.9	3.1	3.1	3.1
40 - 44	2.9	2.7	2.7	2.6	2.8	2.8	2.4	2.7	2.7	2.7
45 - 49	2.6	2.5	2.6	2.7	2.8	2.8	2.6	2.7	2.8	2.6
50 - 54	2.5	2.3	2.5	2.4	2.6	2.7	2.4	2.8	2.7	2.6
55 - 59	2.3	2.1	2.2	2.4	2.5	2.4	2.1	2.2	2.4	2.5
60 - 64	2.0	2.0	1.9	2.0	1.9	1.9	1.9	2.1	1.9	1.8
65 - 69	2.0	2.1	1.9	1.9	1.9	2.0	1.8	1.9	1.9	1.8
70 - 74	2.1	2.0	2.2	2.2	2.2	2.2	2.0	1.8	2.2	1.9
75 - 79	2.6	2.3	2.2	2.2	2.1	2.1	2.1	2.2	2.4	1.9
80 - 84	2.7	2.6	2.7	2.4	2.5	2.4	2.1	2.0	2.0	2.1
≥85	2.0	2.0	1.5	1.5	1.4	1.6	1.2	1.7	1.7	1.4
合計 Overall	3.1	2.9	2.9	2.9	3.0	3.1	2.7	2.9	2.8	2.8

註釋：(1) 傷亡率指按每千名年中人口計算的傷亡者數目。

Note: (1) Casualty rate refers to the number of casualties per 1 000 mid-year population.

圖二 一九九七年及二零零六年按年齡組別劃分的傷亡率
Chart 2 Casualty rates by age group, 1997 and 2006



2.6 整體死亡率(即每百萬人口死亡者數目)由一九九七年的 37.1 下降至二零零六年的 21.0。按年齡組別分析，六十五歲及以上人士的死亡率一般較高。(表四)

2.6 The overall fatality rate (i.e. the number of fatalities per 1 000 000 population) dropped from 37.1 in 1997 to 21.0 in 2006. Analysed by age group, the rate was higher in general for those aged 65 and over. (Table 4)

表四 一九九七年至二零零六年按年齡組別劃分的死亡率⁽¹⁾
Table 4 Fatality rates⁽¹⁾ by age group, 1997 to 2006

年齡組別 Age group	1997	1998	1999	2000	2001	2002	2003	2004	2005	2006
0 - 19	11.0	7.4	11.7	8.8	9.1	9.3	4.8	6.2	5.7	8.7
20 - 24	71.5	55.2	55.4	34.3	40.6	48.4	35.4	19.3	25.5	12.7
25 - 29	33.7	24.3	28.3	22.5	30.5	21.5	36.6	30.9	30.8	31.9
30 - 34	21.9	31.0	18.5	27.3	8.6	15.5	17.4	23.0	10.8	14.6
35 - 39	23.6	21.8	23.1	20.3	19.0	20.9	23.5	16.3	25.4	17.3
40 - 44	24.5	16.5	15.8	7.6	11.8	5.8	20.1	24.3	17.4	13.4
45 - 49	32.0	26.8	33.9	17.5	20.4	28.1	25.0	12.8	4.6	16.7
50 - 54	27.3	24.5	36.3	17.4	20.6	24.1	29.7	24.4	13.7	16.9
55 - 59	43.9	37.4	49.8	41.4	31.7	24.8	38.3	26.0	28.3	23.7
60 - 64	29.7	56.8	57.8	27.2	31.9	33.1	60.4	21.7	17.0	12.3
65 - 69	57.5	76.3	51.5	43.7	40.0	23.8	72.2	40.3	12.2	49.6
70 - 74	70.5	89.2	56.4	79.1	85.6	79.2	95.5	52.7	70.1	48.2
75 - 79	206.5	176.7	124.5	64.6	83.3	85.8	44.6	116.5	106.0	44.8
80 - 84	268.4	151.3	238.4	136.0	173.8	152.8	113.3	106.8	167.1	88.7
≥85	191.5	186.7	39.6	181.8	111.8	73.9	139.1	78.1	36.3	99.2
合計 Overall	37.1	33.8	32.8	25.7	25.8	25.4	30.0	24.5	22.2	21.0

註釋：(1) 死亡率指按每百萬名年中人口計算的死亡者數目。

Note：(1) Fatality rate refers to the number of fatalities per 1 000 000 mid-year population.

3. 道路交通意外的趨勢

3.1 二零零六年有 14 849 宗交通意外（或平均每日 41 宗），與一九九七年的 14 776 宗相近。在過去十年中，交通意外數字相對保持穩定，介乎每年 14 014 宗至 15 631 宗。（表五及圖三）

3.2 雖然交通意外宗數維持在一九九七年的水平，但意外率則出現下降趨勢。以每千名人口計算的交通意外率，由一九九七年的 2.28，下降至二零零六年的 2.17。以其他基數計算的意外率（包括以每千部領牌車輛、以每公里道路及以每百萬車輛行駛公里計算的交通意外率）亦有相似的趨勢。（表五及圖三）

3.3 按交通意外的嚴重程度分析，致命及嚴重意外於過去十年有所下降，分別由一九九七年的 229 宗和 3 154 宗，下降至二零零六年的 135 宗和 2 315 宗。相比之下，輕微意外則由一九九七年的 11 393 上升至二零零六年的 12 399 宗，令致命意外佔全部交通意外的比例由 1.5% 下跌至 0.9%。（表五及圖三）

3. Trend of Road Traffic Accidents

3.1 There were 14 849 traffic accidents (or on average 41 per day) in 2006, more or less the same as that of 14 776 in 1997. During the past decade, the number of traffic accidents remained relatively stable, ranging from 14 014 to 15 631 cases per year. (Table 5 and Chart 3)

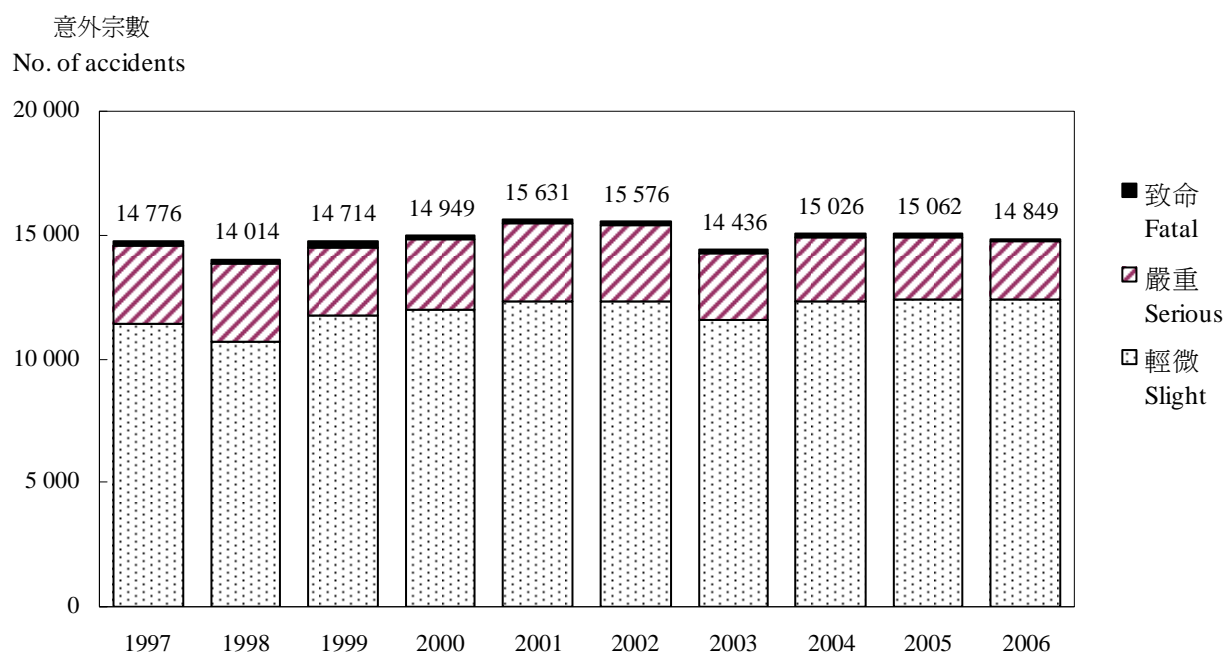
3.2 While the number of traffic accidents was at the same level as 1997, there was a downward trend in accident rate. The number of traffic accidents per 1 000 population dropped from 2.28 in 1997 to 2.17 in 2006. Similar trend was observed in accident rates compiled using other bases (including the number of traffic accidents per 1 000 licensed vehicles, per kilometre of road and per million vehicle-kilometres). (Table 5 and Chart 3)

3.3 Analysed by severity of traffic accident, the number of fatal accidents and the number of serious accidents both dropped in the past decade, from 229 and 3 154 in 1997 to 135 and 2 315 in 2006 respectively. In comparison, the number of slight accidents increased from 11 393 in 1997 to 12 399 in 2006, leading to a decrease in the proportion of fatal accidents among all accidents from 1.5% to 0.9%. (Table 5 and Chart 3)

表五 一九九七年至二零零六年道路交通意外趨勢
Table 5 Trend of road traffic accidents, 1997 to 2006

	1997	1998	1999	2000	2001	2002	2003	2004	2005	2006
(A) 意外宗數 Number of accidents										
(i) 致命 Fatal	229	204	202	162	167	162	173	160	139	135
(ii) 嚴重 Serious	3 154	3 103	2 808	2 838	3 165	3 118	2 674	2 519	2 504	2 315
(iii) 輕微 Slight	11 393	10 707	11 704	11 949	12 299	12 296	11 589	12 347	12 419	12 399
總計 Total	14 776	14 014	14 714	14 949	15 631	15 576	14 436	15 026	15 062	14 849
(B) 意外率 Accident rate										
(i) 以每千名人口計 per 1 000 population	2.28	2.14	2.23	2.24	2.33	2.31	2.14	2.22	2.21	2.17
(ii) 以每千部領牌車輛計 per 1 000 licensed vehicles	30.3	27.9	29.5	29.2	29.9	29.7	27.6	28.4	28.0	27.2
(iii) 以每公里道路計 per kilometre of road	8.1	7.5	7.8	7.9	8.2	8.1	7.5	7.7	7.7	7.5
(iv) 以每百萬車輛行駛公里計 per 1 000 000 vehicle-kilometres	1.30	1.28	1.33	1.28	1.36	1.35	1.29	1.35	1.35	1.29

圖三 一九九七年至二零零六年按嚴重程度劃分的道路交通意外數目
Chart 3 Number of road traffic accidents by severity, 1997 to 2006



3.4 按車輛碰撞類別分析，涉及車撞行人的交通意外由一九九七年的 4 693 宗，下跌了 17.2%至二零零六年的 3 884 宗；而同期涉及車撞車的交通意外亦由 5 825 宗下跌 2.4%至 5 685 宗。至於涉及車撞物的交通意外，則由一九九七年的 1 916 宗下跌 15.1%至二零零六年的 1 627 宗。（表六及圖四）

3.4 Analysed by type of vehicle collision, the number of accidents involving vehicle against pedestrian collision dropped by 17.2% from 4 693 in 1997 to 3 884 in 2006, while the number of accidents involving vehicle against vehicle collision decreased by 2.4% from 5 825 to 5 685. The number of accidents involving vehicle against object collision dropped by 15.1% from 1 916 in 1997 to 1 627 in 2006. (Table 6 and Chart 4)

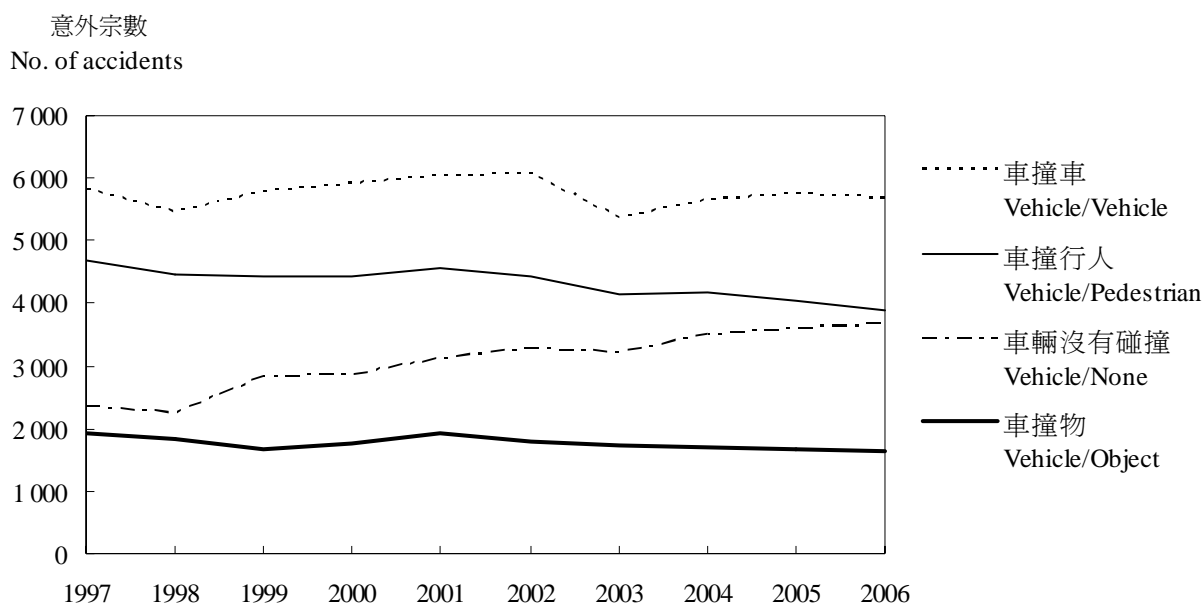
表六 一九九七年至二零零六年按車輛碰撞類別及嚴重程度劃分的道路交通意外數字
Table 6 Road traffic accidents by type of vehicle collision by severity, 1997 to 2006

車輛碰撞類別 Type of vehicle collision		嚴重程度 Severity	1997	1998	1999	2000	2001	2002	2003	2004	2005	2006
車撞行人 Vehicle/ Pedestrian	致命	Fatal	129	107	102	92	93	86	94	91	74	76
	嚴重	Serious	1 301	1 289	1 136	1 140	1 253	1 169	1 011	924	916	855
	輕微	Slight	3 263	3 070	3 200	3 191	3 228	3 168	3 023	3 147	3 063	2 953
	小計	Sub-total	4 693	4 466	4 438	4 423	4 574	4 423	4 128	4 162	4 053	3 884
	每月平均數	Monthly average	391	372	370	369	381	369	344	347	338	324
車撞車 Vehicle/ Vehicle	致命	Fatal	58	55	66	38	39	51	48	46	37	32
	嚴重	Serious	912	887	809	877	897	927	812	797	768	658
	輕微	Slight	4 855	4 522	4 916	4 990	5 102	5 092	4 495	4 819	4 931	4 995
	小計	Sub-total	5 825	5 464	5 791	5 905	6 038	6 070	5 355	5 662	5 736	5 685
	每月平均數	Monthly average	485	455	483	492	503	506	446	472	478	474
車撞物 [‡] Vehicle/ Object [‡]	致命	Fatal	36	38	28	27	32	25	24	16	20	24
	嚴重	Serious	525	513	394	403	479	462	346	315	333	315
	輕微	Slight	1 355	1 295	1 239	1 322	1 409	1 319	1 365	1 384	1 309	1 288
	小計	Sub-total	1 916	1 846	1 661	1 752	1 920	1 806	1 735	1 715	1 662	1 627
	每月平均數	Monthly average	160	154	138	146	160	151	145	143	139	136
車輛沒有碰撞 Vehicle/ None	致命	Fatal	6	4	6	5	3	0	7	7	8	3
	嚴重	Serious	416	414	469	418	536	560	505	483	487	487
	輕微	Slight	1 920	1 820	2 349	2 446	2 560	2 717	2 706	2 997	3 116	3 163
	小計	Sub-total	2 342	2 238	2 824	2 869	3 099	3 277	3 218	3 487	3 611	3 653
	每月平均數	Monthly average	195	187	235	239	258	273	268	291	301	304
所有類別總數 All types	致命	Fatal	229	204	202	162	167	162	173	160	139	135
	嚴重	Serious	3 154	3 103	2 808	2 838	3 165	3 118	2 674	2 519	2 504	2 315
	輕微	Slight	11 393	10 707	11 704	11 949	12 299	12 296	11 589	12 347	12 419	12 399
	總計	Total	14 776	14 014	14 714	14 949	15 631	15 576	14 436	15 026	15 062	14 849
	每月平均數	Monthly average	1 231	1 168	1 226	1 246	1 303	1 298	1 203	1 252	1 255	1 237

註釋：‡ 包括車輛碰撞類別不詳的意外。

Note：‡ Including accidents of unknown type of vehicle collision.

圖四 一九九七年至二零零六年按車輛碰撞類別劃分的交通意外數字
Chart 4 Number of traffic accidents by type of vehicle collision, 1997 to 2006



4. 涉及道路交通意外的車輛

4.1 於二零零六年，總共有 22 384 架車輛涉及交通意外，其中最大部分是私家車，佔 27.7%，其次為的士及輕型貨車，分別佔 16.7% 及 13.0%。（表七）

4.2 就涉及意外率（即每千部領牌車輛中涉及意外車輛數目）而言，於二零零六年，電車的涉及意外率則最高（422.4），其次為公共小巴（245.9）、的士（207.7）及公共巴士（187.0）。與一九九七年比較，除公共小巴、公共巴士及的士外，各類車輛的涉及意外率均見下跌。（表七）

4.3 於二零零六年，有 5 095 宗交通意外涉及私家車，其次為的士（3 320）、電單車（2 741）及輕型貨車（2 605）。（表八）

4.4 在過去十年，涉及單車的交通意外由一九九七年的 782 宗上升至二零零六年的 1 559 宗。此外，同期涉及公共巴士的交通意外亦從 1 672 宗上升至 2 288 宗。（表八）

4. Vehicle Involvements in Road Traffic Accidents

4.1 Among the 22 384 vehicles involved in traffic accidents in 2006, private cars constituted the largest share (27.7%), followed by taxis (16.7%) and light goods vehicles (13.0%). (Table 7)

4.2 In terms of involvement rate (i.e. the number of vehicles involved in accidents per 1 000 licensed vehicles), tram had the highest involvement rate in 2006 (422.4), followed by public light bus (245.9), taxi (207.7) and public bus (187.0). Compared with 1997, all classes of vehicles recorded a decrease in involvement rate except for the public light bus, public bus and taxi. (Table 7)

4.3 In 2006, there were 5 095 accidents involving private cars, followed by taxis (3 320), motor cycles (2 741) and light goods vehicles (2 605). (Table 8)

4.4 During the past decade, accidents involving bicycles increased from 782 in 1997 to 1 559 in 2006. Accidents involving public bus also recorded a rise from 1 672 to 2 288. (Table 8)

表七 一九九七年至二零零六年按車輛類別劃分的涉及意外的車輛數字和涉及意外率⁽¹⁾
Table 7 Vehicle involvements and involvement rates⁽¹⁾ by class of vehicle, 1997 to 2006

車輛種類 Class of vehicle	1997	1998	1999	2000	2001	2002	2003	2004	2005	2006
電單車 Motor cycle	2 718 (117.1)	2 354 (100.9)	2 561 (107.9)	2 724 (110.4)	2 914 (111.2)	2 718 (99.2)	2 736 (93.8)	2 742 (87.7)	2 835 (84.7)	2 791 (80.0)
私家車 Private car	7 460 (24.6)	7 145 (22.4)	7 227 (22.8)	7 461 (22.8)	7 433 (22.0)	7 508 (22.0)	6 282 (18.6)	6 279 (18.4)	6 303 (18.1)	6 211 (17.5)
公共小巴 Public light bus	982 (226.6)	926 (213.4)	1 049 (241.5)	1 055 (243.1)	1 040 (239.6)	1 098 (252.9)	1 008 (232.4)	1 154 (266.5)	1 132 (261.2)	1 069 (245.9)
輕型貨車 Light goods vehicle	3 490 (44.4)	3 075 (39.5)	3 114 (41.7)	3 232 (44.1)	3 041 (42.4)	3 117 (44.5)	2 728 (40.0)	2 822 (41.5)	3 008 (44.1)	2 919 (42.3)
中型貨車 Medium goods vehicle	1 250 (34.6)	1 150 (31.1)	1 151 (31.5)	1 126 (29.2)	1 092 (28.0)	1 123 (29.2)	1 020 (26.5)	1 113 (28.7)	1 095 (27.8)	1 078 (27.5)
重型貨車 Heavy goods vehicle	80 (36.7)	68 (26.3)	84 (31.6)	91 (32.2)	93 (30.0)	126 (38.6)	88 (26.4)	84 (25.1)	85 (26.4)	77 (24.8)
公共巴士 ⁽²⁾ Public bus ⁽²⁾	1 736 (167.4)	1 749 (158.4)	2 265 (196.4)	2 288 (193.3)	2 445 (198.4)	2 380 (187.0)	2 219 (172.3)	2 407 (187.1)	2 379 (185.7)	2 393 (187.0)
的士 Taxi	3 346 (187.7)	3 181 (176.9)	3 101 (172.0)	3 274 (181.9)	3 706 (205.0)	3 617 (200.3)	3 397 (188.8)	3 457 (190.9)	3 752 (208.9)	3 744 (207.7)
電車 Tram	78 (484.5)	91 (565.2)	88 (546.6)	76 (472.0)	85 (528.0)	84 (521.7)	99 (614.9)	100 (621.1)	77 (478.3)	68 (422.4)
輕鐵車輛 Light rail vehicle	17 (171.7)	17 (142.9)	32 (268.9)	25 (210.1)	12 (100.8)	27 (226.9)	21 (176.5)	23 (193.3)	12 (100.8)	19 (159.7)
單車 ⁽³⁾ Bicycle ⁽³⁾	860	911	1 354	1 307	1 576	1 608	1 758	2 035	1 745	1 667
其他 ⁽³⁾ Others ⁽³⁾	701	643	294	276	281	260	217	257	271	348
所有車輛 ⁽³⁾ All vehicles ⁽³⁾	22 718	21 310	22 320	22 935	23 718	23 666	21 573	22 473	22 694	22 384

註釋：(1) 括號內數字顯示個別車輛類別的涉及意外率，即每千部有關類別的領牌車輛中涉及意外的車輛數目。

(2) 公共巴士包括專營巴士及非專營巴士。

(3) 涉及意外率數字不適用。

Notes: (1) Figures in brackets represent the involvement rates of the respective classes of vehicle, i.e. the number of vehicles involved per 1 000 licensed vehicles of the respective classes.

(2) Public buses include franchised buses and non-franchised buses.

(3) Involvement rate is not applicable.

表八 一九九七年至二零零六年按涉及選定車輛類別劃分的道路交通意外數字
Table 8 Road traffic accidents by selected class of vehicle involved, 1997 to 2006

涉及意外的車輛類別 Class of vehicle involved	1997	1998	1999	2000	2001	2002	2003	2004	2005	2006
電單車 Motor cycle	2 676	2 317	2 528	2 674	2 856	2 681	2 671	2 698	2 775	2 741
私家車 Private car	5 995	5 836	5 925	6 053	6 052	6 088	5 165	5 190	5 244	5 095
公共小巴 Public light bus	950	891	995	1 008	992	1 048	958	1 090	1 091	1 027
輕型貨車 Light goods vehicle	3 111	2 776	2 801	2 892	2 762	2 794	2 435	2 528	2 702	2 605
中型貨車 Medium goods vehicle	1 095	969	976	947	957	960	876	945	956	958
重型貨車 Heavy goods vehicle	78	66	84	90	92	124	86	82	83	75
公共巴士 Public bus	1 672	1 688	2 157	2 183	2 341	2 262	2 120	2 315	2 271	2 288
的士 Taxi	3 045	2 865	2 819	2 932	3 323	3 238	3 057	3 083	3 327	3 320
電車 Tram	73	84	83	71	78	73	90	92	74	62
輕鐵車輛 Light rail vehicle	15	16	30	24	11	27	21	22	12	17
所有機動車輛 ⁽¹⁾ All motor vehicles ⁽¹⁾	14 136	13 414	13 796	14 046	14 538	14 434	13 139	13 502	13 795	13 539
單車 Bicycle	782	837	1 260	1 230	1 476	1 528	1 670	1 914	1 646	1 559
所有車輛 ⁽¹⁾ All classes of vehicles ⁽¹⁾	14 776	14 014	14 714	14 949	15 631	15 576	14 436	15 026	15 062	14 849

註釋：(1) 在單一宗意外中，可能涉及多於一種類別的車輛，所以個別車輛類別的意外數字總和會比意外總計為大。

Note : (1) There may be more than one class of vehicle involved in a single accident. Hence, the sum of accidents for individual classes of vehicle will be larger than the overall number of accidents.

二零零七年一月至七月刊載的專題文章目錄

List of Feature Articles Published during January to July 2007

月份	文章題目	Month	Title of Article
1	(i) 對外直接投資統計 (ii) 一九九七至二零零六年中層經理級與專業僱員薪金統計數字	1	(i) External direct investment statistics (ii) Salary statistics of middle-level managerial and professional employees 1997-2006
2	(i) 從事製造業相關活動的貿易公司 (ii) 公屋輪候冊申請人統計調查 (iii) 一九九八至二零零五年工商業的資訊科技開支	2	(i) Trading firms with manufacturing-related activities (ii) The survey on waiting list applicants for public rental housing (iii) Expenditure on information technology in the business sector, 1998-2005
3	(i) 消費物價指數及其在一九九七至二零零六年間的變動情況 (ii) 香港的金融服務行業 (iii) 編製居住或長期逗留在內地的香港居民統計數字的改良方法 (iv) 二零零一至二零零五年工商業的創新活動統計數字 (v) 香港經濟四個主要行業在二零零五年的情況	3	(i) Consumer Price Index and its movements during 1997 – 2006 (ii) The financial services sector in Hong Kong (iii) Enhanced method for compiling statistics on Hong Kong residents having resided / having stayed substantially in the Mainland (iv) Statistics on innovation activities in the business sector, 2001 - 2005 (v) The situation of the four key industries in the Hong Kong Economy in 2005
4	(i) 香港出口貿易分析 (ii) 二零零六年中期人口統計主要結果 (iii) 香港的批發、零售、進出口貿易、飲食及酒店業 (iv) 香港的資產管理業	4	(i) An analysis of Hong Kong's exports (ii) Key findings of the 2006 Population By-census (iii) The wholesale, retail and import and export trades, restaurants and hotels sectors in Hong Kong (iv) The asset management industry in Hong Kong
5	(i) 二零零六年本港居民到中國內地旅行的消費開支 (ii) 二零零一至二零零五年香港研究及發展的統計數字 (iii) 電子產品及電子行業統計數字 (iv) 二零零六年失業率的走勢	5	(i) Consumption expenditure of Hong Kong residents travelling to the mainland of China, 2006 (ii) Statistics on research and development of Hong Kong, 2001-2005 (iii) Statistics on electronic products and the electronics industry (iv) The movement of the unemployment rate in 2006
6	(i) 二零零六年就業綜合估計數字 (ii) 二零零六年到中國內地作私人旅行的本港居民的社會經濟特徵 (iii) 二零零六年香港的中醫藥業 (iv) 二零零一年至二零零六年貨櫃統計 (v) 行業集中度統計數字	6	(i) Composite employment estimates 2006 (ii) Socio-economic characteristics of Hong Kong residents making personal travel to the mainland of China, 2006 (iii) The Chinese medicine sector in Hong Kong, 2006 (iv) Container statistics, 2001-2006 (v) Statistics on sectoral concentration
7	(i) 一九九六年至二零零六年綜合社會保障援助計劃的統計數字 (ii) 一九九七年至二零零六年香港道路交通意外統計 (iii) 香港的零售業	7	(i) Statistics on Comprehensive Social Security Assistance Scheme, 1996 to 2006 (ii) Road traffic accident statistics in Hong Kong, 1997 to 2006 (iii) Retail sector in Hong Kong

**二零零七年八月至十一月
政府統計處定期性統計數據發布日期一覽表**

**Schedule for Issuing Regular Releases of Statistical Data by
the Census and Statistics Department, August – November 2007**

每年九月底，本處會向傳媒公布翌年定期性統計數據新聞發布的詳細時間表。本附錄載列未來四個月的發布日期。數據於發布日期下午四時十五分向傳媒公布。有關的新聞公布於稍後時間載列於政府統計處的網站上 (www.censtatd.gov.hk)。發布日期下午四時十五分後致電本處，亦可查詢有關統計數據。

The date schedule for issuing regular press releases of statistical data in the ensuing year is issued to the mass media in end September of each year. This Annex gives the schedule for the coming four months. Data are issued to the media at 4:15 p.m. on the date of release. The press releases are posted shortly afterwards on the Department's website (www.censtatd.gov.hk). Telephone enquiries may also be made to the Department after 4:15 p.m. on the release date.

統計數據 Statistical Data		發布日期 (日/月/年) Release Date (DD/MM/YYYY)
人口統計 Population Statistics		
1. 二零零七年年中人口數字 <i>查詢電話 Enquiry Telephone Number</i> 2716 8044	Mid-year Population for 2007	14.08.2007
勞工統計 Labour Statistics		
1. 失業及就業不足統計數字 二零零七年五月至七月 二零零七年六月至八月 二零零七年七月至九月 二零零七年八月至十月 <i>查詢電話 Enquiry Telephone Number</i> 2887 5506	Unemployment and Underemployment Statistics May - July 2007 June - August 2007 July - September 2007 August - October 2007	20.08.2007 18.09.2007 16.10.2007 19.11.2007
2. 就業及空缺統計 二零零七年六月 <i>查詢電話 Enquiry Telephone Number</i> 2582 4751	Employment and Vacancies Statistics June 2007	21.09.2007
3. 薪金總額及工資統計 二零零七年第二季 <i>查詢電話 Enquiry Telephone Number</i> 2887 5584	Payroll and Wage Statistics 2nd Quarter 2007	27.09.2007
4. 經理級與專業顧員薪金指數 二零零七年六月 <i>查詢電話 Enquiry Telephone Number</i> 2887 5584	Salary Indices for Managerial and Professional Employees June 2007	30.10.2007
對外貿易統計 External Trade Statistics		
1. 對外商品貿易統計 二零零七年七月 二零零七年八月 二零零七年九月 二零零七年十月 <i>查詢電話 Enquiry Telephone Number</i> 2582 4914	External Merchandise Trade Statistics July 2007 August 2007 September 2007 October 2007	27.08.2007 27.09.2007 25.10.2007 26.11.2007

對外貿易統計 (續)

External Trade Statistics (Cont'd.)

2.	對外商品貿易貨量及價格統計	Volume and Price Statistics of External Merchandise Trade	
	二零零七年六月	June 2007	13.08.2007
	二零零七年七月	July 2007	14.09.2007
	二零零七年八月	August 2007	16.10.2007
	二零零七年九月	September 2007	12.11.2007
	查詢電話 Enquiry Telephone Number 2582 4914		
3.	按產品所屬工業劃分的本港製造業產品出口統計	Domestic Export Statistics Classified by Industrial Origin	
	二零零七年第二季	2nd Quarter 2007	07.08.2007
	二零零七年第三季	3rd Quarter 2007	06.11.2007
	查詢電話 Enquiry Telephone Number 2805 6641		
4.	船隻、港口貨物及貨櫃統計	Statistics on Vessels, Port Cargo and Containers	
	二零零七年第二季	2nd Quarter 2007	07.09.2007
	查詢電話 Enquiry Telephone Number 2582 4889		
5.	涉及外發中國內地加工貿易統計	Statistics on Trade Involving Outward Processing in the Mainland of China	
	二零零七年第二季	2nd Quarter 2007	20.09.2007
	查詢電話 Enquiry Telephone Number 2582 5255		

物價統計

Price Statistics

1.	消費物價指數	Consumer Price Index	
	二零零七年七月	July 2007	21.08.2007
	二零零七年八月	August 2007	20.09.2007
	二零零七年九月	September 2007	22.10.2007
	二零零七年十月	October 2007	22.11.2007
	查詢電話 Enquiry Telephone Number 2805 6401		

國民收入及國際收支平衡統計

National Income and Balance of Payments Statistics

1.	本地生產總值	Gross Domestic Product	
	二零零七年第二季 ⁽¹⁾	2nd Quarter 2007 ⁽¹⁾	17.08.2007
	二零零七年第三季 ⁽²⁾	3rd Quarter 2007 ⁽²⁾	16.11.2007
	查詢電話 Enquiry Telephone Number 2582 4787		

- 註： (1) 財政司司長辦公室轄下的經濟分析及方便營商處的經濟分析部發布有關二零零七年半年經濟報告及二零零七年全年本地生產總值暨物價預測第二次修訂的新聞稿時，二零零七年第二季本地生產總值亦於該新聞稿中發布。政府統計處不會在當日就二零零七年第二季的本地生產總值另發新聞稿。
- (2) 財政司司長辦公室轄下的經濟分析及方便營商處的經濟分析部發布有關二零零七年第三季經濟報告及二零零七年全年本地生產總值暨物價預測最後修訂的新聞稿時，二零零七年第三季本地生產總值亦於該新聞稿中發布。政府統計處不會在當日就二零零七年第三季的本地生產總值另發新聞稿。

- Notes : (1) The Economic Analysis Division of the Economic Analysis and Business Facilitation Unit under the Financial Secretary's Office will issue a press release on the Half-yearly Economic Report 2007 and second update of GDP and prices forecasts for 2007 as a whole. The GDP for the second quarter of 2007 will also be released there. No separate press release on the GDP for the second quarter of 2007 will be issued by the Census and Statistics Department on that day.
- (2) The Economic Analysis Division of the Economic Analysis and Business Facilitation Unit under the Financial Secretary's Office will issue a press release on the Third Quarter Economic Report 2007 and final update of GDP and prices forecasts for 2007 as a whole. The GDP for the third quarter of 2007 will also be released there. No separate press release on the GDP for the third quarter of 2007 will be issued by the Census and Statistics Department on that day.

國民收入及國際收支平衡統計 (續)

National Income and Balance of Payments Statistics (Cont'd.)

2.	以固定價格計算按經濟活動劃分的 按季本地生產總值 二零零七年第二季 <i>查詢電話 Enquiry Telephone Number</i> 2116 5188	Quarterly Constant Price Gross Domestic Product by Economic Activity 2nd Quarter 2007	21.09.2007
3.	本地居民生產總值及對外要素收益 流動數字 二零零七年第二季 <i>查詢電話 Enquiry Telephone Number</i> 2116 5101	Gross National Product and External Factor Income Flows 2nd Quarter 2007	14.09.2007
4.	國際收支平衡統計 二零零七年第二季 <i>查詢電話 Enquiry Telephone Number</i> 2116 8660	Balance of Payments Statistics 2nd Quarter 2007	24.09.2007

其他各類統計

Various Other Types of Statistics

1.	零售業銷貨額統計 二零零七年七月 二零零七年八月 二零零七年九月 <i>查詢電話 Enquiry Telephone Number</i> 2802 1367	Retail Sales Statistics July 2007 August 2007 September 2007	03.09.2007 02.10.2007 01.11.2007
2.	工業生產指數和製造業生產者 價格指數 二零零七年第二季 <i>查詢電話 Enquiry Telephone Number</i> 2805 6641	Quarterly Index of Industrial Production and Quarterly Producer Price Indices for Manufacturing Industries 2nd Quarter 2007	14.09.2007
3.	建造工程完成量統計 二零零七年第二季 <i>查詢電話 Enquiry Telephone Number</i> 2805 6424	Construction Output Statistics 2nd Quarter 2007	12.09.2007
4.	食肆的收入及購貨額統計 二零零七年第二季 二零零七年第三季 <i>查詢電話 Enquiry Telephone Number</i> 2802 1367	Restaurant Receipts and Purchases Statistics 2nd Quarter 2007 3rd Quarter 2007	10.08.2007 09.11.2007
5.	服務行業按季業務收益指數 二零零七年第二季 <i>查詢電話 Enquiry Telephone Number</i> 2802 1269	Quarterly Business Receipts Indices for Service Industries 2nd Quarter 2007	10.09.2007
6.	按季業務展望統計調查結果 二零零七年第四季 <i>查詢電話 Enquiry Telephone Number</i> 2805 6112	Results of the Quarterly Business Tendency Survey 4th Quarter 2007	25.10.2007

政府統計處刊物一覽 (截至二零零七年七月一日)

List of Publications of the Census and Statistics Department (as at 1.7.2007)

名稱	Title	最新期號##	印刷版售價(港元) Price of Print Version (HK\$)	
			不包括 郵費 Not Including Postage	連本地 郵費 Including Local Postage
綜合性統計刊物	General Statistical Digests			
香港經濟趨勢 (半月刊)	Hong Kong Economic Trends (half-monthly)	29/6/2007	18.0	21.0
香港統計月刊 §	Hong Kong Monthly Digest of Statistics §	6/2007	100.0	116.5
香港統計年刊 §	Hong Kong Annual Digest of Statistics §	2006	122.0	150.0
香港社會及經濟趨勢 (雙年刊) §	Hong Kong Social and Economic Trends (biennial) §	2005	110.0	126.4
香港的發展(1967 - 2002) - 統計圖表集 (特刊) §	A Graphic Guide on Hong Kong's Development (1967 - 2002) (ad hoc) §	-	38.0	54.4
香港統計數字一覽 (年刊) ++	Hong Kong in Figures (annual) ++	2007	<-----免費 Free ----->	
對外貿易	External Trade			
商品貿易統計	Merchandise Trade Statistics			
香港商品貿易統計：	Hong Kong Merchandise Trade Statistics：			
進口 (月刊)	Imports (monthly)	4/2007	363.0	391.0
港產品出口及轉口 (月刊)	Domestic Exports and Re-exports (monthly)	4/2007	363.0	391.0
周年附刊，按國家及貨品劃分：	Annual Supplement, Country by Commodity：			
- 進口	- Imports	2006	278.0	306.0
- 港產品出口及轉口	- Domestic Exports and Re-exports	2006	278.0	325.0
香港對外商品貿易 (月刊)	Hong Kong External Merchandise Trade (monthly)	4/2007	92.0	108.5
香港對外商品貿易回顧 (年刊)	Annual Review of Hong Kong External Merchandise Trade (annual)	2006	86.0	94.2
香港商品貿易指數 (月刊)	Hong Kong Merchandise Trade Index Numbers (monthly)	4/2007	26.0	30.0
對外商品貿易數字 (月刊)	External Merchandise Trade Figures (monthly)	5/2007	<-----免費 Free ----->	
按產品所屬工業劃分的港產品出口統計數字 (季刊)	Domestic Exports Statistics Classified by Industrial Origin (quarterly)	Q1/2007	<-----免費 Free ----->	
船務統計	Shipping Statistics			
香港船務統計 (季刊)	Hong Kong Shipping Statistics (quarterly)	1-3/2007	60.0	68.5
服務貿易統計	Trade in Services Statistics			
香港服務貿易統計報告 (年刊)	Report on Hong Kong Trade in Services Statistics (annual)	2005	74.0	82.2
國民收入	National Income			
本地生產總值 (季刊)	Gross Domestic Product (quarterly)	Q1/2007	47.0	51.5
本地生產總值 (年刊) ++	Gross Domestic Product (annual) ++	2006	56.0	64.2
本地生產總值特刊，二零零二年八月 (特刊)	Special Report on Gross Domestic Product, August 2002 (ad hoc)	-	46.0	54.2
國際收支平衡	Balance of Payments			
香港國際收支平衡統計 一九九七年至一九九九年 (特刊)	Balance of Payments Statistics of Hong Kong 1997 to 1999 (ad hoc)	-	14.0	18.0
香港國際收支平衡統計 (季刊)	Balance of Payments Statistics of Hong Kong (quarterly)	Q1/2007	33.0	37.5
香港對外直接投資統計 (年刊)	External Direct Investment Statistics of Hong Kong (annual)	2005	42.0	46.0
勞工	Labour			
勞動人口、就業及空缺統計	Labour Force, Employment and Vacancy Statistics			
綜合住戶統計調查按季統計報告書	Quarterly Report on General Household Survey	1-3/2007	56.0	64.5
就業及空缺按季統計報告	Quarterly Report of Employment and Vacancies Statistics	3/2007	33.0	37.5
建築地盤就業及空缺按季統計報告	Quarterly Report of Employment and Vacancies at Construction Sites	3/2007	28.0	32.0
就業及空缺統計 (詳細統計表) (年刊)：	Employment and Vacancies Statistics (Detailed Tables) (annual)：			
甲系列 (服務業)	Series A (Service Sectors)	2005	64.0	80.4
乙系列 (批發、零售、飲食及酒店業)	Series B (Wholesale and Retail Trades, Restaurants and Hotels)	2005	52.0	56.4
丙系列 (工業)	Series C (Industrial Sectors)	2005	92.0	108.4
丁系列 (進出口貿易業)	Series D (Import/Export Trades)	2005	45.0	49.0

政府統計處刊物一覽（截至二零零七年七月一日）（續）

List of Publications of the Census and Statistics Department (as at 1.7.2007) (Cont'd.)

名稱	Title	最新期號##	印刷版售價(港元)	
			Price of Print Version (HK\$)	
			不包括 郵費 Not Including Postage	連本地 郵費 Including Local Postage
勞工（續）	Labour (Cont'd.)			
工資及勞工收入統計	Wages and Labour Earnings Statistics			
工資及薪金總額按季統計報告	Quarterly Report of Wage and Payroll Statistics	3/2007	49.0	57.5
經理級與專業僱員薪金及僱員福利統計 報告（高層管理人員除外）（ <i>年刊</i> ）§	Report of Salaries and Employee Benefits Statistics Managerial and Professional Employees (Excluding Top Management) (<i>annual</i>) §	2006	24.0	28.4
從事公營建築工程的工人每日平均工資 （ <i>月刊</i> ）	Average Daily Wages of Workers Engaged in Public Sector Construction Projects (<i>monthly</i>)	4/2007	<-----免費 Free ----->	
人力統計	Manpower Statistics			
二零零二年人力培訓及工作技能需求機構 單位統計調查報告（ <i>特刊</i> ）	Report on 2002 Establishment Survey on Manpower Training and Job Skills Requirements (<i>ad hoc</i>)	-	48.0	56.2
消費物價及住戶開支	Consumer Prices and Household Expenditure			
消費物價指數月報	Monthly Report on the Consumer Price Index	5/2007	49.0	53.5
消費物價指數年報	Annual Report on the Consumer Price Index	2006	76.0	84.2
二零零四至零五年住戶開支統計調查及 重訂消費物價指數基期（ <i>特刊</i> ）	2004/05 Household Expenditure Survey and the Rebasing of the Consumer Price Indices (<i>ad hoc</i>)	-	47.0	55.2
工商業	Commerce and Industry			
工業生產	Industrial Production			
工業生產按年統計調查報告	Report on Annual Survey of Industrial Production	2005	80.0	84.0
工業生產按季指數	Quarterly Index of Industrial Production	Q1/2007	8.0	11.0
製造業按季生產者價格指數	Quarterly Producer Price Indices for Manufacturing Industries	Q1/2007	8.0	11.0
紡織業生產按季統計數字	Quarterly Textile Production Statistics	Q4/2006	5.0	8.0
經銷及服務業	Distribution and Services			
批發、零售、進口與出口貿易、食肆及 酒店按年統計調查報告	Report on Annual Survey of Wholesale, Retail and Import and Export Trades, Restaurants and Hotels	2005	96.0	100.4
食肆的收入及購貨額按季統計調查報告	Report on Quarterly Survey of Restaurant Receipts and Purchases	Q1/2007	6.0	9.0
零售業銷貨額按月統計調查報告	Report on Monthly Survey of Retail Sales	4/2007	9.0	12.0
運輸及有關服務按年統計調查報告	Report on Annual Survey of Transport and Related Services	2005	79.0	83.0
倉庫業、通訊業、銀行業、財務業、保險業 及商用服務業按年統計調查報告	Report on Annual Surveys of Storage, Communication, Banking, Financing, Insurance and Business Services	2005	108.0	116.2
服務行業按季業務收益指數	Quarterly Business Receipts Indices for Service Industries	Q1/2007	11.0	14.0
服務業統計摘要（ <i>年刊</i> ）	Statistical Digest of the Services Sector (<i>annual</i>)	2006	162.0	178.4
服務業統計摘要按季補充資料	Quarterly Supplement to Statistical Digest of the Services Sector	Q3/2006	44.0	53.0
屋宇建築及建造	Building and Construction			
屋宇建築、建造及地產業按年統計調查 報告	Report on Annual Survey of Building, Construction and Real Estate Sectors	2005	90.0	94.0
建造工程完成量按季統計調查報告	Report on the Quarterly Survey of Construction Output	Q1/2007	25.0	29.0
特選建築材料平均批發價格（ <i>月刊</i> ）	Average Wholesale Prices of Selected Building Materials (<i>monthly</i>)	3/2007	<-----免費 Free ----->	
公營建築工程的工資及材料成本指數 （1995年6月=100）（ <i>月刊</i> ）	Index Numbers of the Costs of Labour and Materials Used in Public Sector Construction Projects (June 1995=100) (<i>monthly</i>)	3/2007	<-----免費 Free ----->	
公營建築工程的工資及材料成本指數 （2003年4月=100）（ <i>月刊</i> ）	Index Numbers of the Costs of Labour and Materials Used in Public Sector Construction Projects (April 2003=100) (<i>monthly</i>)	4/2007	<-----免費 Free ----->	
能源	Energy			
香港能源統計（ <i>季刊</i> ）	Hong Kong Energy Statistics (<i>quarterly</i>)	Q3/2006	20.0	24.0
香港能源統計（ <i>年刊</i> ）	Hong Kong Energy Statistics (<i>annual</i>)	2006	67.0	71.0
其他經濟及工商業統計	Other Economic and Business Statistics			
業務展望按季統計調查報告	Report on Quarterly Business Tendency Survey	Q2/2007	26.0	30.0
手頭訂單按月統計調查	Monthly Survey of Orders-on-hand	10/2003	8.0	11.0
代表香港境外母公司的駐港公司 按年統計調查報告	Report on Annual Survey of Companies in Hong Kong Representing Parent Companies Located outside Hong Kong	2006	32.0	36.4

政府統計處刊物一覽 (截至二零零七年七月一日) (續)

List of Publications of the Census and Statistics Department (as at 1.7.2007) (Cont'd.)

名稱	Title	最新期號##	印刷版售價(港元)	
			Price of Print Version (HK\$)	
			不包括郵費	連本地郵費
			Not Including Postage	Including Local Postage
工商業 (續)	Commerce and Industry (Cont'd.)			
其他經濟及工商業統計 (續)	Other Economic and Business Statistics (Cont'd)			
資訊科技在工商業的使用情況 和普及程度按年統計調查報告	Report on Annual Survey on Information Technology Usage and Penetration in the Business Sector	2006	45.0	61.4
工商業創新活動按年統計調查 報告	Report on Annual Survey of Innovation Activities in the Business Sector	2005	45.0	53.2
香港 - 資訊社會 (年刊)	Hong Kong as an Information Society (annual)	2006	58.0	66.2
香港 - 知識型經濟統計透視 (特刊)	Hong Kong as a Knowledge-based Economy - A Statistical Perspective (ad hoc)	-	47.0	55.2
人口	Population			
香港二零零六年中期人口統計	Hong Kong 2006 Population By-census			
二零零六年中期人口統計 (特刊)	2006 Population By-census (ad hoc)			
簡要報告	Summary Results	-	41.0	49.2
有關各區議會分區的基本統計表	Basic Tables for District Council Districts	-	50.0	58.2
有關香港島各選區的基本統計表	Basic Tables for Constituency Areas : Hong Kong Island	-	84.0	100.4
有關九龍各選區的基本統計表	Basic Tables for Constituency Areas : Kowloon	-	112.0	128.4
有關新界各選區的基本統計表	Basic Tables for Constituency Areas : New Territories	-	180.0	208.0
區議會分區及選區統計表的附件 - 區域分界地圖	Boundary Maps Complementary to Tables for District Council Districts and Constituency Areas	-	134.0	162.0
有關各小規劃統計區的基本統計表	Basic Tables for Tertiary Planning Units	-	274.0	302.0
小規劃統計區統計表的附件 - 區域 分界地圖	Boundary Maps Complementary to Tables for Tertiary Planning Units	-	80.0	88.2
主題性報告 - 香港的住戶收入分布	Thematic Report - Household Income Distribution in Hong Kong	-	114.0	122.2
香港二零零一年人口普查	Hong Kong 2001 Population Census			
二零零一年人口普查 (特刊)	2001 Population Census (ad hoc)			
主要報告 - 第一冊	Main Report - Volume I	-	84.0	100.4
主要報告 - 第二冊	Main Report - Volume II	-	66.0	82.4
主要統計表	Main Tables	-	70.0	86.4
統計圖解	Graphic Guide	-	30.0	38.2
主題性報告 - 青年	Thematic Report - Youths	-	36.0	44.2
主題性報告 - 女性及男性	Thematic Report - Women and Men	-	40.0	48.2
主題性報告 - 長者	Thematic Report - Older Persons	-	36.0	44.2
主題性報告 - 少數族裔人士	Thematic Report - Ethnic Minorities	-	44.0	52.2
主題性報告 - 內地來港定居未足七年 人士	Thematic Report - Persons from the Mainland Having Resided in Hong Kong for Less Than 7 Years	-	38.0	46.2
主題性報告 - 單親人士	Thematic Report - Single Parents	-	36.0	44.2
其他與人口有關的刊物	Other Publications relating to Population			
香港人口推算 2004-2033 (特刊)	Hong Kong Population Projections 2004-2033 (ad hoc)	-	28.0	36.2
香港人口生命表 1998-2033 (特刊)	Hong Kong Life Tables 1998-2033 (ad hoc)	-	28.0	32.4
香港人口趨勢 1981-2001 (特刊)	Demographic Trends in Hong Kong 1981-2001 (ad hoc)	-	28.0	36.2
社會資料	Social Data			
從綜合住戶統計調查搜集所得的社會資料	Social Data Collected via the General Household Survey			
第四 四號專題報告書 (特刊) : 就業人士轉工情況	Special Topics Report No. 44 (ad hoc) : Job-changing of employed persons	-	50.0	54.4
主題性住戶統計調查第二 九號報告書 (特刊) : 公眾對教育改革的意見	Thematic Household Survey Report No. 29 (ad hoc) : Public Views on Education Reform	-	100.0	104.4
執行贍養費命令的情況	Enforcement of Maintenance Order			

政府統計處刊物一覽（截至二零零七年七月一日）（續）

List of Publications of the Census and Statistics Department (as at 1.7.2007) (Cont'd.)

名稱	Title	最新期號##	印刷版售價(港元)	
			Price of Print Version (HK\$)	
			不包括郵費 Not Including Postage	連本地郵費 Including Local Postage
社會資料 (續)	Social Data (Cont'd.)			
按區議會分區劃分的人口及住戶統計資料 (<i>年刊</i>)	Population and Household Statistics Analysed by District Council District (<i>annual</i>)	2006	18.0	21.7
一九九八年在香港發生的罪案及罪案事主 (<i>特刊</i>)	Crime and Its Victims in Hong Kong in 1998 (<i>ad hoc</i>)	-	38.0	54.4
香港的女性及男性 - 主要統計數字 (<i>年刊</i>)	Women and Men in Hong Kong - Key Statistics (<i>annual</i>)	2006	65.0	73.2
統計分類表	Classification Lists			
香港進出口貨物分類表（協調制度）， 二零零七年版 (<i>特刊</i>)	Hong Kong Imports and Exports Classification List (Harmonized System), 2007 Edition (<i>ad hoc</i>)			
第一冊：第一至第 類貨物	Volume One: Commodity Section I – X	-	24.0	40.4
第二冊：第 一至第二 二類貨物	Volume Two: Commodity Section XI – XXII	-	28.0	44.4
香港商品貿易統計分類表，二零零二年版 (<i>特刊</i>)	Hong Kong Merchandise Trade Statistics Classification, 2002 Edition (<i>ad hoc</i>)	-	62.0	78.4
香港標準行業分類（第一冊）(<i>特刊</i>)++	Hong Kong Standard Industrial Classification (Volume One) (<i>ad hoc</i>)++	-	135.0	163.0
統計發展報告	Report on Statistical Development			
統計發展概要 (<i>年刊</i>)	An Outline of Statistical Development (<i>annual</i>)	2007	84.0	92.2

註釋：除另有註明外，所有刊物均以中、英文對照形式出版。獲取刊物的方法載於第 A10 頁。

用戶可以在政府統計處的網站 (www.censtatd.gov.hk/products_and_services/products/publications/index_tc.jsp) 免費下載政府統計處的刊物和統計表。

Q1、Q2、Q3、Q4代表第一、第二、第三和第四季。

++ 分別備有中文版和英文版。

§ 本刊物的印刷版亦於部分郵局出售 (查詢熱線：(852) 2921 2222)。

所列售價及郵費日後或有修訂。外地郵費將於收到訂購要求後另行通知。

有關政府統計處刊物及其他統計產品的最新資料，請瀏覽本處網站內「產品及服務」一節 (www.censtatd.gov.hk/products_and_services/index_tc.jsp) 或致電刊物出版組查詢 (電話：(852) 2582 3025)。

Notes: Unless otherwise specified, all publications are published in bilingual format. Means of obtaining the publications are given in page A10.

Users can download publications and statistical tables of the Census and Statistics Department free of charge at the website of the Census and Statistics Department (www.censtatd.gov.hk/products_and_services/products/publications/index.jsp).

Q1, Q2, Q3 and Q4 represent respectively the first, second, third and fourth quarter.

++ Available in separate Chinese and English versions.

§ Print version of this publication is also put for sale at selected Post Offices (enquiry hotline: (852) 2921 2222).

All quoted prices and postages are subject to revision. Postage for external mailings will be advised upon receipt of orders.

For up-to-date information of the publications and other statistical products of the Census and Statistics Department, please visit the "Products & Services" section on the website of the department (www.censtatd.gov.hk/products_and_services/index.jsp) or call the Publications Unit of the department at (852) 2582 3025.

政府統計處唯讀光碟產品一覽 (截至二零零七年七月一日)

List of CD-ROM Products of the Census and Statistics Department (as at 1.7.2007)

		售價不包括 郵費(港元) Price Not Including Postage (HK\$)	售價連本地 郵費(港元) Price Including Local Postage (HK\$)
二零零一年人口普查			
- 統計表唯讀光碟 (不定期) ++ 載有372個常用統計表。有關統計表涉及的主題廣泛, 包括人口、住戶、教育、經濟、房屋 內部遷移及人口分組等本港住戶及人口特徵。選定統計表亦載列按區議會分區 / 選區及規劃統計小區 / 街段劃分的統計數字。	- TAB on CD-ROM (ad hoc) ++ Contains 372 commonly used statistical tables. The tables cover a wide range of topics including demographic, household, education, economic, housing, internal migration and home moving, and population sub-group characteristics of the households and population in Hong Kong. There are also geographical breakdown of the statistics by District Council District/Constituency Area and Tertiary Planning Unit/Street Block in selected tables.	1,690.0	1,711.2
- 地圖唯讀光碟 (不定期) 以常用的格式提供一套數碼化的香港地圖, 內載的地域分界數碼地圖包括香港海岸線、區議會分區 / 選區分界、規劃統計小區 (及其合併組) 分界、街段 - 小合併組分界及新市鎮分界。配合適當的電腦軟件, 這套數碼地圖可把載於《二零零一年人口普查 - 統計表唯讀光碟》內的統計數據作地理顯示之用。	- MAP on CD-ROM (ad hoc) Contains a set of digital maps of Hong Kong in commonly used formats. The digital maps for geographical delineation included therein are Coastline of Hong Kong, District Council District/Constituency Area Boundary, Tertiary Planning Unit (and Groupings) Boundary, Small Street Block Group Boundary and New Town Boundary. When used with suitable computer software, the digital maps can be used for geographical presentation of the statistical data contained in the <i>2001 Population Census - TAB on CD-ROM</i> .	840.0	857.0
關於購買以上兩套光碟事宜, 請致電人口統計組 (電話: (852) 2716 8025)。		Please call the Demographic Statistics Section at (852) 2716 8025 for matters relating to the purchase of the above two sets of CD-ROM.	
- 普查易2001 (不定期) 普查易2001人口普查光碟套裝是一套功能強大的知識為本產品, 它能幫助使用者有效地進行客戶資訊分析和客戶關係管理的工作。普查易2001光碟內載有超過400個由政府統計處提供的香港二零零一年人口普查統計表, 分區數碼地圖及功能超卓的地理訊息系統, 當中包含了全香港居民的人口特徵、經濟、教育、住戶、房屋等統計數據, 使用者可以透過簡單和容易使用的功能介面, 來選擇和提取資料。	- Hong Kong CensusPro 2001 (ad hoc) CensusPro 2001 GIS CD-ROM Package is a powerful knowledge-based product that enables users to perform customer profiling and Customer Relationship Management (CRM) easily and efficiently. CensusPro 2001 includes over 400 statistical tables of the Hong Kong 2001 Population Census provided by the Census and Statistics Department, digital boundary maps, and the superb Geographical Information System (GIS) functions and features. Statistical data on the demographic, economic, education, household and housing characteristics of the population are included and can be easily selected and retrieved through intuitive and easy-to-use application interface.) 這光碟產品由 Info Mapping (Hong Kong) Limited 生產及銷售。有關查詢及訂購, 請直接與該公司聯絡。 (電話: (852) 2779 6088)。) This CD-ROM is produced and marketed by the Info Mapping (Hong Kong) Limited. For enquiries and purchase, please contact the company direct at (852) 2779 6088.	
普查易2001共有4種資料輸出模式: 主題性地圖、預設格式報表、統計圖表、及檔案匯出(支援數據庫/試算表/純文字等格式)。普查易2001光碟可應用於規劃業務策略、直接市場推廣或宣傳、客戶資料分析、以及作其他的商業性分析等。		CensusPro 2001 provides output in mainly 4 ways : thematic maps, formatted reports, bar/pie charts, and export files in dbf/Excel files/text files. CensusPro 2001 can be used in areas like strategic business/service planning, direct marketing and promotion, customer analysis and profiling, and many other business analysis purposes and applications.	
- SUPERMAP Hong Kong 2001 (不定期) • 涵蓋全面的人口普查數據, 配合最新數碼地圖作介面 • 採用具世界領導地位之地理信息系統進行處理及分析 • 可作多重圖像化分析人口普查數據 • 有助機構進行深入的市場及客戶資訊分析	- SUPERMAP Hong Kong 2001 (ad hoc) • Covers comprehensive population census datasets with the use of the latest digital maps as interface • Manipulates and analyses through employing world leading Geographical Information System (GIS) technology • Provides multiple views of population census data • Helps organisations with in-depth market analysis or customer profiling through data linkage) 這些光碟產品由益百利香港有限公司生產及銷售。有關查詢及訂購, 請直接與該公司聯絡。 (電話: (852) 2839 5388)。) These CD-ROMs are produced and marketed by Experian Hong Kong Limited. For enquiries and purchase, please contact the company direct at (852) 2839 5388.)))	

政府統計處唯讀光碟產品一覽 (截至二零零七年七月一日) (續)

List of CD-ROM Products of the Census and Statistics Department (as at 1.7.2007) (Cont'd.)

		售價不包括 郵費(港元) Price Not Including Postage (HK\$)	售價連本地 郵費(港元) Price Including Local Postage (HK\$)
對外商品貿易	External Merchandise Trade		
- 香港對外商品貿易唯讀光碟	- Hong Kong External Merchandise Trade CD-ROM		這些光碟產品由益百利香港有 限公司生產及銷售。有關查詢 及訂購，請直接與該公司聯絡 (電話：(852) 2839 5388)。
列載過去二 五個月的按月貿易統計數字 及過往 年的按年貿易統計數字(按年數字 只載於周年報)，並包括按貨品類別 (《標 準國際貿易分類 (第三次修訂版)》或《協 調制度》)、國家/地區及運輸方式劃分的詳 細貿易統計數字。	Contains monthly trade data for past 25 months and annual trade data for past 10 years (annual figures are only available in the annual edition). Detailed statistics classified by commodity (using the “Standard International Trade Classification (Revision 3)” or the “Harmonized System”), by country/territory and by mode of transport are also included.) These CD-ROMs are produced) and marketed by Experian Hong) Kong Limited. For enquiries) and purchase, please contact the) company direct at (852)) 2839 5388.
- 香港船務統計唯讀光碟 (按季產品)	- Hong Kong Shipping Statistics CD-ROM (quarterly)		
列載自一九九三年以來，按運輸方式、裝運 種類、裝貨 / 卸貨國家 / 地區及港口、貨 品、貨物種類、貨物裝卸地點及與中國內地 有關的轉運劃分的貨物及載貨貨櫃吞吐量 統計數字。	Contains data back-dated to 1993 on cargo and laden container throughput statistics analysed by mode of transport, shipment type, country/territory and port of loading/discharge, commodity cargo type, cargo handling location and transshipment related to the mainland of China.)

註釋：++ 分別備有中文版和英文版。

所列售價及郵費日後或有修訂。外地郵費將於收到訂購要求
後另行通知。

有關政府統計處刊物及其他統計產品的最新資料，請瀏覽本
處網站內「產品及服務」一節 (www.censtatd.gov.hk/products_and_services/index_tc.jsp) 或致電刊物出版組查詢 (電話：
(852) 2582 3025)。

Notes：++ Available in separate Chinese and English versions.

All quoted prices and postages are subject to revision. Postage for
external mailings will be advised upon receipt of orders.

For up-to-date information of the publications and other statistical
products of the Census and Statistics Department, please visit the
“Products & Services” section on the website of the department
(www.censtatd.gov.hk/products_and_services/index.jsp) or call the
Publications Unit of the department at (852) 2582 3025.

獲取政府統計處刊物及其他統計產品的方法

Means of Obtaining Publications and Other Statistical Products of the Census and Statistics Department

網站

用戶可以在政府統計處網站 (www.censtatd.gov.hk/products_and_services/products/publications/index_tc.jsp) 免費下載統計刊物。

政府統計處刊物的印刷版於統計處的香港統計數據書店 (www.statisticalbookstore.gov.hk) 和政府新聞處的政府書店 (www.bookstore.gov.hk) 網站有售。在網上購買印刷版的統計刊物，可享有原價八五折優惠。統計處的唯一讀光碟產品也於香港統計數據書店網站有售。

郵購服務

本處大部分的刊物均附有郵購表格，供訂購或按期訂閱刊物的印刷版。請填妥郵購表格，連同所需費用和郵費的支票或匯票寄回辦理。郵購表格亦可在政府統計處網站下載 (www.censtatd.gov.hk/products_and_services/other_services/provision_of_stat/mail_ordering_of_publications/index_tc.jsp)。

銷售中心

市民可親臨政府統計處刊物出版組購買刊物的印刷版和唯一讀光碟產品，並即時提取。刊物出版組的地址是：

香港灣仔港灣道十二號
灣仔政府大樓十九樓

電話：(852) 2582 3025
圖文傳真：(852) 2827 1708

該組並設有閱讀區，讓使用者翻閱陳列的統計處各類的刊物。閱讀區也備有統計處編製的宣傳／教育單張和小冊子，歡迎索閱。

Website

Users may download statistical publications free of charge from the website of the Census and Statistics Department (www.censtatd.gov.hk/products_and_services/products/publications/index.jsp).

Print versions of publications of the Census and Statistics Department are available for sale online at the Statistical Bookstore of the Department (www.statisticalbookstore.gov.hk) and the Government Bookstore of the Information Services Department (www.bookstore.gov.hk). Print versions if purchased online are offered a discount, at 85% of their original prices. The Statistical Bookstore also offers for sale CD-ROM products of the Department.

Mail Order Service

A mail order form for ordering or subscribing to print versions of publications is available in most of the Department's publications. Completed form should be sent back together with a cheque or bank draft covering all necessary cost and postage. The order form is also available for downloading from the website of the Department (www.censtatd.gov.hk/products_and_services/other_services/provision_of_stat/mail_ordering_of_publications/index.jsp).

Sales Centre

Print versions of publications and CD-ROM products are available for purchase and collection on the spot at the Publications Unit of the Census and Statistics Department at the following address :

19/F Wanchai Tower
12 Harbour Road, Wan Chai, Hong Kong.

Tel. : (852) 2582 3025
Fax : (852) 2827 1708

The Unit also provides a reading area where users may browse through various publications of the Department on display. Publicity/educational leaflets and pamphlets of the Department are also available for collection.

郵購表格 (只適用於印刷版)

致：香港花園道 美利大廈4樓 政府新聞處 刊物銷售小組 電話：(852) 2842 8844 或 (852) 2842 8845 圖文傳真：(852) 2598 7482	售價			請註明 刊期(月份/季/ 期號及年份)		合計 所需的 期數 (b)	總計 (港元) (a) x (b)
	每本 (港元) (1)	本地 郵費 (2) 及 (3) (港元)	合計 (港元) (a)	由	至		
1. 香港統計月刊 (二零零七年期刊) (J470007 B0)	100.0	16.5	116.5	/2007	12/2007		
2. 香港經濟趨勢 (二零零七年期刊) (半月刊) (J410007 B0)	18.0	3.0	21.0	/2007	24/2007		
3. 香港統計年刊 (二零零六年版) (J47010600B0)	122.0	28.0	150.0	-	-		
4. 香港社會及經濟趨勢 (二零零五年版) (雙年刊) (J57290500B0)	110.0	16.4	126.4	-	-		
5. 統計發展概要 (二零零七年版) (年刊) (J33110700B0)	84.0	8.2	92.2	-	-		
6. 香港的發展 (1967-2002) - 統計圖表集 (J69090300B0)	38.0	16.4	54.4	-	-		
7.							
8.							
9.							
10.							

本人現付上支票 (編號：) 港幣 元，購買上述刊物。
(註：支票應予劃線，並註明支付「香港特別行政區政府」。)

姓名： 職銜：
 機構名稱： 地址：
 電話： 圖文傳真：
 日期：

- 註： (1) 此為印刷版的售價。在政府統計處的香港統計數據書店網站 (www.statisticalbookstore.gov.hk) 或政府新聞處的政府書店網站 (www.bookstore.gov.hk) 購買印刷版，可享有原價八五折優惠。
 (2) 外地的訂戶暫時無須付上支票，所需郵費將於收到訂購表格後另行通知。
 (3) 訂購超過一本相同名稱的年刊或特刊，請向政府新聞處查詢所需的本地郵費 (電話：(852) 2842 8844 或 (852) 2842 8845，圖文傳真：(852) 2598 7482)。

你在表格上提供的資料，只會用作辦理書刊訂購事宜，不會向任何和訂購無關的人士透露。如欲查看或更改所填報的資料，請與政府新聞處刊物銷售小組聯絡。地址：香港花園道美利大廈4樓。



Mail Order Form (Applicable to print versions only)

To : Publications Sales Unit Information Services Department 4/F Murray Building Garden Road Hong Kong Tel. : (852) 2842 8844 or (852) 2842 8845 Fax : (852) 2598 7482	Price			Please indicate Month/Quarter/ Issue no. and Year		Total no. of issue(s) required (b)	Total amount (HK\$) (a) x (b)
	Per copy (HK\$) (1)	Local postage (2) & (3) (HK\$)	Total (HK\$) (a)	From	To		
1. Hong Kong Monthly Digest of Statistics 2007 issues (J470007 B0)	100.0	16.5	116.5	/2007	12/2007		
2. Hong Kong Economic Trends 2007 issues (half-monthly) (J410007 B0)	18.0	3.0	21.0	/2007	24/2007		
3. Hong Kong Annual Digest of Statistics 2006 edition (J47010600B0)	122.0	28.0	150.0	-	-		
4. Hong Kong Social and Economic Trends 2005 edition (biennial) (J57290500B0)	110.0	16.4	126.4	-	-		
5. An Outline of Statistical Development 2007 edition (annual) (J33110700B0)	84.0	8.2	92.2	-	-		
6. A Graphic Guide on Hong Kong's Development (1967-2002) (J69090300B0)	38.0	16.4	54.4	-	-		
7.							
8.							
9.							
10.							

I enclose a cheque (No. _____) of HK\$ _____ for the payment of the above order. (Note : The cheque should be crossed and made payable to "The Government of the Hong Kong Special Administrative Region" or "The Government of the HKSAR".)

Name : _____ Title of post : _____

Name of organisation : _____ Address : _____

Tel. : _____ Fax : _____

Date : _____

- Notes :
- (1) These refer to the price of the print version of publications. Print versions if purchased online at the Statistical Bookstore of the Census and Statistics Department (www.statisticalbookstore.gov.hk) or the Government Bookstore of the Information Services Department (www.bookstore.gov.hk) are offered a discount, at 85% of their original prices.
 - (2) For mailings to addresses outside Hong Kong, please do not send in a cheque now. The required postage will be advised upon receipt of order.
 - (3) For an order of multiple copies of an annual or ad hoc publication with the same title, please consult the Information Services Department about the required local postage. (Tel. : (852) 2842 8844 or (852) 2842 8845, Fax : (852) 2598 7482).

The information provided herein will only be used for processing your order of publications and will not be disclosed to parties which are not involved in the processing. You may seek access to or correction of the information by addressing your request to the Publications Sales Unit, Information Services Department, 4/F Murray Building, Garden Road, Hong Kong .





訂閱表格 (只適用於印刷版)
香港統計月刊 二零零七年期刊

Subscription Form (Applicable to print versions only)
Hong Kong Monthly Digest of Statistics 2007 Issues

致：香港灣仔港灣道 二號
灣仔政府大樓 九樓
政府統計處綜合統計組 (一) 乙
電話：(852)2582 3025 圖文傳真：(852)2827 1708

To：General Statistics Section (1) B
Census and Statistics Department
19/F Wanchai Tower
12 Harbour Road, Wan Chai, Hong Kong
Tel. : (852) 2582 3025 Fax : (852) 2827 1708

請在適當空格 () 內加上 (✓) 號。Please tick (✓) the appropriate box ().

(港元 HK\$)

刊物名稱 Title of Publication	每本 售價 Price per copy (1)	每本 本地郵費 Local postage (2) & (3)	每本 合計 Total price (a)	期數 No. of issues (b)	總計 Total amount (a) x (b)
<input type="checkbox"/> 香港統計月刊 二零零七年期刊一月至 二月 (共 二期) Hong Kong Monthly Digest of Statistics January to December 2007 (total 12 issues)	100.0	16.5	116.5	12	1,398.0
<input type="checkbox"/> 香港統計月刊 二零零七年期刊____月至十二月 (共____期) Hong Kong Monthly Digest of Statistics _____ to December 2007 (total _____ issues)	100.0	16.5	116.5		
<input type="checkbox"/>					
合計 Total					

本人現付上支票 (編號：) 港幣 元，購買上述刊物。
I enclose a cheque (No.) of HK\$ for the payment of the above order.

註：支票應予劃線，並註明支付「香港特別行政區政府」。

Note: Cheque should be crossed and made payable to "The Government of the Hong Kong Special Administrative Region" or "The Government of the HKSAR".

訂戶資料 **Subscriber's Information**

姓名 Name : 機構名稱 Name of organisation :
職銜 Title of post : 地址 Address :
部門 Department :
電話 Tel. :
圖文傳真 Fax : 日期 Date :

機構主要業務類別 **Major line of business of organisation :**

- ☐ 進口與出口貿易業 Import and export trade ☐ 建造業 Construction
☐ 零售貿易業 Retail trade ☐ 金融、保險及地產業 Financing, insurance and real estate
☐ 製造業 Manufacturing ☐ 商用服務業 Business services
☐ 教育機構 Educational institution ☐ 社區、社會及個人服務業 Community, social and personal services
☐ 其他，請註明 Others, please specify

讀者類別 (可選多項) **Readership (more than one choice allowed) :**

- ☐ 經理 Manager ☐ 市場、推廣部人員 Marketing / promotional personnel
☐ 分析員、研究員 Analyst / researcher ☐ 教師、大專院校講師 Teaching staff / lecturer
☐ 學生 Student ☐ 其他，請註明 Others, please specify

訂戶類別 **Type of subscriber :**

- ☐ 機構 Organisation ☐ 私人 Individual

你是否願意收到本處其他刊物的推廣資料？Do you want to receive promotional materials of other publications of this department?

☐ 是 Yes ☐ 否 No HKMDS

註：(1) 此為印刷版的售價。在政府統計處的香港統計數據書店網站 (www.statisticalbookstore.gov.hk) 或政府新聞處的政府書店網站 (www.bookstore.gov.hk) 購買印刷版，可享有原價八五折優惠。

Notes: This refers to the price of the print version of the publication. Print versions if purchased online at the Statistical Bookstore of the Census and Statistics Department (www.statisticalbookstore.gov.hk) or the Government Bookstore of the Information Services Department (www.bookstore.gov.hk) are offered a discount, at 85% of their original prices.

(2) 外地的訂戶暫時無須付上支票，所需郵費將於收到訂購表格後另行通知。

For mailings to addresses outside Hong Kong, please do not send in a cheque now. The required postage will be advised upon receipt of order.

(3) 訂閱超過一本相同名稱及期號的刊物，請向政府新聞處查詢所需的本地郵費 (電話：(852) 2842 8844 或 (852) 2842 8845，圖文傳真：(852) 2598 7482)。

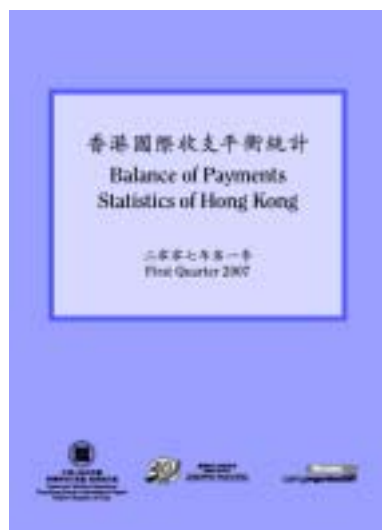
For subscription to multiple copies per issue with the same title, please consult the Information Services Department about the required local postage. (Tel. : (852) 2842 8844 or (852) 2842 8845, Fax : (852) 2598 7482).

你在表格上提供的資料，只會用作辦理書刊訂購事宜，不會向任何和訂購無關的人士透露。如欲查看或更改所填報的資料，請與政府統計處的資料管理人員聯絡。地址：香港灣仔港灣道 二號灣仔政府大樓二 一樓。

The information provided herein will only be used for processing your order of publications and will not be disclosed to parties which are not involved in the subscription of these publications. You may seek access to or correction of the information by addressing your request to the Data Controlling Officer, Census and Statistics Department, 21/F Wanchai Tower, 12 Harbour Road, Wan Chai, Hong Kong.

香港國際收支平衡統計 (二零零七年期刊)

Balance of Payments Statistics of Hong Kong (2007 Issues)



二零零七年系列現可訂購
2007 Series Now for
Subscription

本季刊載錄最新國際收支平衡及有關統計數字，包括對外債務及國際投資頭寸數字：

- ✧ 概念及定義
- ✧ 資料來源
- ✧ 有關統計數字的闡釋
- ✧ 詳細的統計表及統計圖

This quarterly publication contains the latest Balance of Payments (BoP) and related statistics, including External Debt (ED) and International Investment Position (IIP) :

- ✧ Concepts and definitions
- ✧ Data sources
- ✧ Interpretation of relevant statistics
- ✧ Detailed statistical tables and charts

有關獲取本刊物的方法，請參閱第 A10 頁。此外，本刊物的訂閱表格亦刊載於下頁。

Please refer to page A10 for the means of obtaining this publication. A subscription form is also available on the following page.



訂閱表格 (只適用於印刷版)
香港國際收支平衡統計 (二零零七年期刊)
Subscription Form (Applicable to print versions only)
Balance of Payments Statistics of Hong Kong (2007 Issues)

致：香港九龍新蒲崗太子道東 698 號
寶光商業中心 6 樓 602-606 室
政府統計處國際收支平衡統計組 (一) —
電話：(852)2116 8678 圖文傳真：(852)2116 0278

To: Balance of Payments Section (1)1,
Census and Statistics Department,
Unit 602-606, 6/F, Stelux House,
698 Prince Edward Road East,
San Po Kong, Kowloon, Hong Kong.
Tel.: (852) 2116 8678 Fax: (852) 2116 0278

請在適當空格 () 內加上 (✓) 號。Please tick (✓) in the appropriate box ().

(港元 HK\$)

刊期 Issue	刊物出版日期 To be published	每本售價 Price per copy (1)	每本 本地郵費 Local postage (2) & (3)	每本 合計 Total price (a)	本數 No. of copies (b)	總計 Total amount (a) x (b)
<input type="checkbox"/> 二零零七年第一季 First Quarter 2007 (J69000701B0)	二零零七年六月 June 2007	33.0	4.5	37.5		
<input type="checkbox"/> 二零零七年第二季 Second Quarter 2007 (J69000702B0)	二零零七年九月 September 2007	33.0	4.5	37.5		
<input type="checkbox"/> 二零零七年第三季 Third Quarter 2007 (J69000703B0)	二零零七年 二月 December 2007	33.0	4.5	37.5		
<input type="checkbox"/> 二零零七年第四季 Fourth Quarter 2007 (J69000704B0)	二零零八年三月 March 2008	33.0	4.5	37.5		
合計 Total:						

本人現附上支票 (編號: _____) 港幣 _____ 元, 購買上述刊物。(註: 支票應予劃線, 並註明支付「香港特別行政區政府」。))
I enclose a cheque (No. _____) of HK\$ _____ for the payment of the above order.
(Cheque should be crossed and made payable to "The Government of the Hong Kong Special Administrative Region" or "The Government of the HKSAR".)

訂戶資料 Subscriber's Information

姓名 Name: _____ 機構名稱 Name of organisation: _____
職銜 Title of post: _____ 地址 Address: _____
部門 Department: _____
電話 Tel.: _____
圖文傳真 Fax: _____ 日期 Date: _____

機構主要業務類別 Major line of business of organisation:

- | | | |
|--|---|---|
| <input type="checkbox"/> 進出口貿易業 Import/export trade | <input type="checkbox"/> 建造業 Construction | <input type="checkbox"/> 零售貿易業 Retail trade |
| <input type="checkbox"/> 教育機構 Educational institution | <input type="checkbox"/> 製造業 Manufacturing | <input type="checkbox"/> 商用服務業 Business services |
| <input type="checkbox"/> 金融、保險及地產業
Financing, insurance and real estate | <input type="checkbox"/> 社區、社會及個人服務業
Community, social and personal services | <input type="checkbox"/> 其他, 請註明 Others, please specify _____ |

讀者類別 (可選多項) Readership (more than one choice allowed):

- | | | |
|-------------------------------------|--|---|
| <input type="checkbox"/> 經理 Manager | <input type="checkbox"/> 分析員、研究員 Analyst / researcher | <input type="checkbox"/> 市場、推廣部人員 Marketing / promotional personnel |
| <input type="checkbox"/> 學生 Student | <input type="checkbox"/> 教師、大專院校講師 Teaching staff / lecturer | <input type="checkbox"/> 其他, 請註明 Others, please specify _____ |

訂戶類別 Type of subscriber:

- ☐ 機構 Organisation ☐ 私人 Individual

你是否願意收到本處其他刊物的推廣資料? Do you want to receive promotional materials of other publications of this department?

☐ 是 Yes ☐ 否 No BoP1

註: (1) 此為印刷版的售價。在政府統計處的香港統計數據書店網站 (www.statisticalbookstore.gov.hk) 或政府新聞處的政府書店網站 (www.bookstore.gov.hk) 購買印刷版, 可享有原價八五折優惠。

This refers to the price of the print version of the publication. Print versions if purchased online at the Statistical Bookstore of the Census and Statistics Department (www.statisticalbookstore.gov.hk) or the Government Bookstore of the Information Services Department (www.bookstore.gov.hk) are offered a discount, at 85% of their original prices.

(2) 外地的訂戶暫時無須付上支票, 所需郵費將於收到訂購表格後另行通知。

For mailings to addresses outside Hong Kong, please do not send in a cheque now. The required postage will be advised upon receipt of order.

(3) 訂閱超過一本相同名稱及期號的刊物, 請向政府新聞處查詢所需的本地郵費 (電話: (852) 2842 8844 或 (852) 2842 8845, 圖文傳真: (852) 2598 7482)。

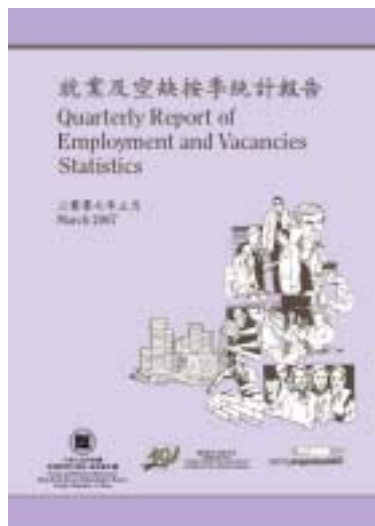
For subscription to multiple copies per issue with the same title, please consult the Information Services Department about the required local postage. (Tel.: (852) 2842 8844 or (852) 2842 8845, Fax: (852) 2598 7482).

你在表格上提供的資料, 只會用作辦理書刊訂購事宜, 不會向任何和訂購無關的人士透露。如欲查看或更改所填報的資料, 請與政府統計處的資料管理人員聯絡。地址: 香港灣仔港灣道二號灣仔政府大樓二一樓。

The information provided herein will only be used for processing your order of publications and will not be disclosed to parties which are not involved in the subscription of these publications. You may seek access to or correction of the information by addressing your request to the Data Controlling Officer, Census and Statistics Department, 21/F, Wanchai Tower, 12 Harbour Road, Wan Chai, Hong Kong.

二零零七年系列現可訂購 2007 Series Now for Subscription

就業及空缺按季統計報告 Quarterly Report of Employment and Vacancies Statistics



本季刊載列各行業類別最新及近期的統計數字，包括：

- 就業人數
- 職位空缺數目
- 機構單位數目

統計資料顯示各主要行業組別的就業模式及就業機會，有助分析勞工市場的情況。

本季刊以中英文對照版印行，並於三、六、九及十二月第三個星期出版。

This quarterly report contains the latest and the recent statistics on:

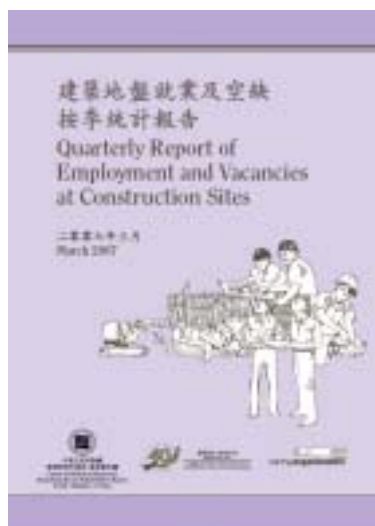
- number of persons engaged
- number of job vacancies
- number of establishments

by industry sectors.

The statistics are useful for indicating employment patterns and job opportunities in major industries/trades, and for labour market analysis.

This quarterly report is published in bilingual form and is available in the third week of March, June, September and December.

建築地盤就業及空缺按季統計報告 Quarterly Report of Employment and Vacancies at Construction Sites



本季刊載列建築地盤最新及近期的統計數字，包括：

- 地盤工人人數
- 地盤工人職位空缺數目
- 建築地盤數目

統計資料顯示建築地盤的就業模式及就業機會，有助分析勞工市場的情況。

本季刊以中英文對照版印行，並於三、六、九及十二月第三個星期出版。

This quarterly report contains the latest and the recent statistics on:

- number of manual workers engaged at construction sites
- number of vacancies of manual workers
- number of construction sites

The statistics are useful for indicating employment patterns and job opportunities at construction sites, and for labour market analysis.

This quarterly report is published in bilingual form and is available in the third week of March, June, September and December.

有關獲取本刊物的方法，請參閱第A10頁。此外，刊物的訂閱表格亦刊載於下頁。

Please refer to page A10 for the means of obtaining this publication. A subscription form is also available on the following page for ordering the publication.



訂閱表格 (只適用於印刷版) 二零零七年期刊
Subscription Form (Applicable to print versions only) 2007 Issues

致：香港灣仔港灣道十二號灣仔政府大樓二十樓
 政府統計處 就業統計組

To: Employment Statistics Section,
 Census and Statistics Department,
 20/F Wanchai Tower, 12 Harbour Road,
 Wan Chai, Hong Kong.

電話 Tel.: (852) 2582 5076

圖文傳真 Fax: (852) 2827 2296

	每本售價 (港元) Price per copy (HK\$) (1)	每本 本地 郵費 (港元) Local postage (HK\$) (2) & (3)	每本 合計 (港元) Total price (HK\$) (a)	請註明 刊期 (月份) Please indicate month		合計所需 的期數 Total no. of issue(s) required (b)	總計 (港元) Total amount (HK\$) (a) x (b)
				由 From	至 To		
就業及空缺按季統計報告 Quarterly Report of Employment and Vacancies Statistics (J510107 B0 - J51010704B0)	33.0	4.5	37.5	/2007	12/2007		
建築地盤就業及空缺按季統計報告 Quarterly Report of Employment and Vacancies at Construction Sites (J650007 B0 - J65000704B0)	28.0	4.0	32.0	/2007	12/2007		
合計 TOTAL							

本人現付上支票 (編號: _____) 港幣 _____ 元, 購買上述刊物。(註: 支票應予劃線, 並註明支
 付「香港特別行政區政府」)

I enclose a cheque (No. _____) of HK\$ _____ for the payment of the above order. (Note: Cheque
 should be crossed and made payable to "The Government of the Hong Kong Special Administrative Region" or "The Government of the
 HKSAR".)

訂戶資料 Subscriber's Information

姓名 Name: _____

地址 Address: _____

職銜 Title of post: _____

部門 Department: _____

機構名稱 Name of organisation: _____

電話 Tel.: _____ 圖文傳真 Fax: _____

日期 Date: _____

請在適當空格 (□) 內加上 (√) 號。Please tick (√) the appropriate box (□).

機構主要業務類別 Major line of business of organisation:

- | | |
|---|--|
| <input type="checkbox"/> 製造業 Manufacturing | <input type="checkbox"/> 進口與出口貿易業 Import and export trade |
| <input type="checkbox"/> 建造業 Construction | <input type="checkbox"/> 零售貿易業 Retail trade |
| <input type="checkbox"/> 商用服務業 Business services | <input type="checkbox"/> 金融、保險及地產業 Financing, insurance and real estate |
| <input type="checkbox"/> 教育機構 Educational institution | <input type="checkbox"/> 社區、社會及個人服務業 Community, social and personal services |
| <input type="checkbox"/> 其他, 請註明 Others, please specify _____ | |

讀者類別 (可選多項) Readership (more than one choice allowed):

- | | |
|---|---|
| <input type="checkbox"/> 經理 Manager | <input type="checkbox"/> 教師、大專院校講師 Teaching staff / lecturer |
| <input type="checkbox"/> 市場、推廣部人員 Marketing / promotional personnel | <input type="checkbox"/> 學生 Student |
| <input type="checkbox"/> 分析員、研究員 Analyst / researcher | <input type="checkbox"/> 其他, 請註明 Others, please specify _____ |

訂戶類別 Type of subscriber:

- ☐ 機構 Organisation ☐ 私人 Individual

你是否願意收到本處其他刊物的推廣資料? Do you want to receive promotional materials of other publications of this department?

- ☐ 是 Yes ☐ 否 No

註: (1) 此為印刷版的售價。在政府統計處的香港統計數據書店網站 (www.statisticalbookstore.gov.hk) 或政府新聞處的政府書店網站
 Notes: (www.bookstore.gov.hk) 購買印刷版, 可享有原價八五折優惠。

These refer to the price of the print version of publications. Print versions if purchased online at the Statistical Bookstore of the Census and Statistics
 Department (www.statisticalbookstore.gov.hk) or the Government Bookstore of the Information Services Department (www.bookstore.gov.hk) are offered
 a discount, at 85% of their original prices.

(2) 外地的訂戶暫時無須付上支票, 所需郵費將於收到訂購表格後另行通知。

For mailings to addresses outside Hong Kong, please do not send in a cheque now. The required postage will be advised upon receipt of order.

(3) 訂閱超過一本相同名稱及期號的刊物, 請向政府新聞處查詢所需的本地郵費 (電話: (852) 2842 8844 或 (852) 2842 8845, 圖文傳真:
 (852) 2598 7482)。

For subscription to multiple copies per issue with the same title, please consult the Information Services Department about the required local postage.
 (Tel.: (852) 2842 8844 or (852) 2842 8845, Fax: (852) 2598 7482).

你在表格上提供的資料, 只會用作辦理書刊訂購事宜, 不會向任何和訂購無關的人士透露。如欲查看或更改所填報的資料, 請與政府統計
 處的資料管理人員聯絡。地址: 香港灣仔港灣道十二號灣仔政府大樓二十一樓。

The information provided herein will only be used for processing your order of publications and will not be disclosed to parties which are not involved
 in the subscription of these publications. You may seek access to or correction of the information by addressing your request to the Data Controlling
 Officer, Census and Statistics Department, 21/F Wanchai Tower, 12 Harbour Road, Wan Chai, Hong Kong.

專業統計 服務市民

The screenshot displays the official website of the Government Statistics Department of Hong Kong. The header includes the department's logo, name in Chinese and English, and navigation links for 'Government Information Centre', 'Simplified Text', 'Traditional Text', and 'English'. A search bar and links for 'Website Guide' and 'Email' are also present.

The main content area is divided into several sections:

- 重點提要 (Highlights):** Features three main news items:
 - 二零零五年十一月份的零售業總銷貨額臨時統計數字**: Reports a temporary estimate for November 2005 retail sales of 158 billion, up 4.2% from the previous year.
 - 《主題性住戶統計調查第二十四號報告書》出版**: Announces the publication of the 24th report on the thematic household survey, covering results from November 2004 to January 2005.
 - 二零零五年九月工資及薪金總額統計數字**: Reports that the average wage rate in September 2005 was 0.8% higher than the previous year, and the total wage and salary index was 3.2% higher.
- 香港統計資料 (Hong Kong Statistical Data):** A list of various data categories including population, labor, trade, industry, commerce, technology, land, construction, housing, transport, government revenue, prices, education, health, social welfare, governance, culture, environment, energy, and national income.
- RSS 按此獲取以RSS形式發放的最新提要**: A link to receive the latest highlights via RSS.
- 人口、住戶及機構統計數字 (Population, Housing and Institutions Statistics)**: Includes a map of Hong Kong and a link to view it.
- 主要統計指標 (Main Statistical Indicators)**: Features a line graph showing the '主要經濟及社會統計指標' (Main Economic and Social Statistical Indicators) and a link to view more data.

On the left sidebar, there are links to 'Home', 'Latest News', 'About Us', 'Main Planning, Projects and Development', 'Hong Kong Statistical Data', 'Newspapers and Press Conferences', 'Products and Services', 'Media Specials', 'Survey of Interviewers', 'Trade News Specials', 'Statistics and Student Specials', 'Related Websites', and 'Service Platform'.

At the bottom left, there are links to '二零零六年中期人口統計' (2006 Mid-year Population Census), '香港統計數據書店' (Hong Kong Statistical Data Bookstore), and '查閱貨物分類編號' (Check Goods Classification Codes).

新增功能

- 按主題搜尋資料
- 地圖上的分區統計資料
- 查閱貿易貨物分類編號
- 以電子郵件及Really Simple Syndication (RSS)方式通知最新統計資訊
- 為學生、傳媒工作者、統計調查受訪者及進出口人士而設的專區

有關政府統計處網站

- 最新的經濟及社會統計資料及圖表
- 於新聞稿發布當天在網站查閱有關統計數據
- 香港官方統計資料的入門網站

請瀏覽政府統計處網頁
www.censtatd.gov.hk

Quality Statistics to Serve the Community

Census and Statistics Department
The Government of the Hong Kong Special Administrative Region

Government Information Centre TEXT ONLY 繁體版 简体版 SEARCH SITE MAP

- Home
- What's New
- About Us
- Major Projects, Events and Developments
- Hong Kong Statistics
- Press Releases & Press Conferences
- Products and Services
- Media Workers' Corner
- Survey Respondents' Corner
- Corner on Trade Matters
- Statistical Literacy and Students' Corner
- Links
- Service Desk

Highlights

Provisional Statistics of Retail Sales for November 2005
The value of total retail sales in November 2005, provisionally estimated at \$15.8 billion, increased by 4.2% over a year earlier.
[More ..](#)

Wage and Payroll Statistics for September 2005
The average wage rate, as measured by the wage index, rose by 0.8% in nominal terms in September 2005 over a year earlier. As for payroll, the index of payroll per person engaged increased by 3.2% in nominal terms in the third quarter of 2005 over a year earlier.
[More ..](#)

Report on "External Direct Investment Statistics of Hong Kong 2004" now available on sale
The report contains detailed statistics including inward direct investment by investor country/territory; outward direct investment by recipient country/territory; opinions of direct investors on investment environment of Hong Kong and more detailed information on external direct investment in Hong Kong.
[More ..](#)

RSS To get future highlights in RSS format
[About RSS](#)

2006 Population By-census

Statistical Bookstore

Searching Commodity Codes

Population, Household and Establishment Statistics
[About Viewing this Map](#)

Key Indicators
Key Economic & Social Indicators
[More..](#)

Hong Kong Statistics

- Population and Vital Events
- Labour
- External Trade
- Industrial Production
- Commerce
- Science and Technology
- Land, Building, Construction and Real Estate
- Housing and Property
- Transport, Communications and Tourism
- Public Accounts, Money and Finance
- Prices
- Education
- Health
- Social Welfare
- Law and Order
- Culture, Entertainment and Recreation
- Environment, Climate and Geography
- Energy
- National Income and Balance of Payments
- Others

Four Key Industries in HK Economy

Social Topics Studies

New Features

- Information searching by theme
- District statistics on maps
- Trade commodity code searching
- Notification of latest statistics through e-mail and Really Simple Syndication (RSS) tool
- Dedicated corners for students, media workers, survey respondents and importers/exporters

About C&SD Website

- Latest economic and social statistics and charts
- Press releases available on day of release
- Portal site for Hong Kong official statistics

Please visit
www.censtatd.gov.hk