

# 2018 年有香港境外母公司的 駐港公司按年統計調查報告

## Report on 2018 Annual Survey of Companies in Hong Kong with Parent Companies Located outside Hong Kong



香港特別行政區 政府統計處  
Census and Statistics Department  
Hong Kong Special Administrative Region



# 2018 年有香港境外母公司的 駐港公司按年統計調查報告

## Report on 2018 Annual Survey of Companies in Hong Kong with Parent Companies Located outside Hong Kong

有關本刊物的查詢，請聯絡：

政府統計處 業務展望統計組

地址：香港九龍協調道 3 號工業貿易大樓 11 樓

電話：(852) 3903 7263 圖文傳真：(852) 2123 1053

電郵：regional-offices@censtatd.gov.hk

Enquiries about this publication can be directed to :

**Business Expectation Statistics Section**

**Census and Statistics Department**

Address : 11/F Trade and Industry Tower, 3 Concorde Road,

Kowloon, Hong Kong.

Tel. : (852) 3903 7263 Fax : (852) 2123 1053

E-mail : regional-offices@censtatd.gov.hk

政府統計處網站 Website of the Census and Statistics Department

[www.censtatd.gov.hk](http://www.censtatd.gov.hk)

2018 年 10 月出版

Published in October 2018

本刊物只備有下載版

This publication is available in download version only

目錄	Contents	頁數 Page
摘要	<b>Executive Summary</b>	<b>1</b>
1. 引言	<b>1. Introduction</b>	<b>4</b>
2. 地區總部	<b>2. Regional headquarters</b>	<b>11</b>
3. 地區辦事處	<b>3. Regional offices</b>	<b>15</b>
4. 當地辦事處	<b>4. Local offices</b>	<b>19</b>
5. 地區總部／地區辦事處／當地辦事處的意見	<b>5. Views of regional headquarters/regional offices/local offices</b>	<b>22</b>
<i>以香港作為設立地區總部／地區辦事處／當地辦事處地點的吸引力</i>	<i>Attractiveness of Hong Kong as a location for setting up regional headquarters/regional offices/local offices</i>	
<i>未來三年內的業務計劃</i>	<i>Business plans in the coming three years</i>	
<i>地區總部／地區辦事處／當地辦事處所提出香港特別行政區政府應關注的具體事項</i>	<i>Specific issues which regional headquarters/regional offices/local offices had raised for the attention of the Hong Kong Special Administrative Region Government</i>	
<i>對投資推廣署的認識</i>	<i>Knowledge about Invest Hong Kong</i>	
統計表	<b>Statistical Tables</b>	
1. 統計調查結果摘要	1. Summary results of the Survey	
1.1 2014年至2018年地區總部、地區辦事處及當地辦事處數目	1.1 Number of regional headquarters, regional offices and local offices, 2014 to 2018	26
1.2 2014年至2018年就業於地區總部、地區辦事處及當地辦事處的人數	1.2 Number of persons engaged by regional headquarters, regional offices and local offices, 2014 to 2018	27
1.3 2014年至2018年按母公司所在的選定國家／地區劃分的地區總部／地區辦事處／當地辦事處總數	1.3 Total number of regional headquarters/regional offices/local offices by selected country/territory where the parent company was located, 2014 to 2018	28
1.4 2018年按公司規模劃分的地區總部／地區辦事處／當地辦事處總數及就業人數	1.4 Total number of regional headquarters/regional offices/local offices and number of persons engaged by size of company, 2018	29
1.5 2018年按在香港的主要業務範圍劃分的地區總部／地區辦事處／當地辦事處總數	1.5 Total number of regional headquarters/regional offices/local offices by major line of business in Hong Kong, 2018	30
1.6 2018年按母公司的主要業務範圍劃分的地區總部／地區辦事處／當地辦事處總數	1.6 Total number of regional headquarters/regional offices/local offices by major line of business of the parent company, 2018	31

2. 地區總部	2. Regional headquarters	
2.1 2014年至2018年按母公司所在的選定國家／地區劃分的地區總部數目	2.1 Number of regional headquarters by selected country/territory where the parent company was located, 2014 to 2018	32
2.2 2018年按公司規模劃分的地區總部數目及就業人數	2.2 Number of regional headquarters and number of persons engaged by size of company, 2018	33
2.3 2018年按在香港的主要業務範圍劃分的地區總部數目	2.3 Number of regional headquarters by major line of business in Hong Kong, 2018	34
2.4 2018年按母公司的主要業務範圍劃分的地區總部數目	2.4 Number of regional headquarters by major line of business of the parent company, 2018	35
2.5 2014年至2018年按區內選定地域責任 (香港除外) 劃分的地區總部數目	2.5 Number of regional headquarters by selected geographical responsibility in the region (other than Hong Kong), 2014 to 2018	36
3. 地區辦事處	3. Regional offices	
3.1 2014年至2018年按母公司所在的選定國家／地區劃分的地區辦事處數目	3.1 Number of regional offices by selected country/territory where the parent company was located, 2014 to 2018	37
3.2 2018年按公司規模劃分的地區辦事處數目及就業人數	3.2 Number of regional offices and number of persons engaged by size of company, 2018	38
3.3 2018年按在香港的主要業務範圍劃分的地區辦事處數目	3.3 Number of regional offices by major line of business in Hong Kong, 2018	39
3.4 2018年按母公司的主要業務範圍劃分的地區辦事處數目	3.4 Number of regional offices by major line of business of the parent company, 2018	40
3.5 2014年至2018年按區內選定地域責任 (香港除外) 劃分的地區辦事處數目	3.5 Number of regional offices by selected geographical responsibility in the region (other than Hong Kong), 2014 to 2018	41
4. 當地辦事處	4. Local offices	
4.1 2014年至2018年按母公司所在的選定國家／地區劃分的當地辦事處數目	4.1 Number of local offices by selected country/territory where the parent company was located, 2014 to 2018	42
4.2 2018年按公司規模劃分的當地辦事處數目及就業人數	4.2 Number of local offices and number of persons engaged by size of company, 2018	43
4.3 2018年按在香港的主要業務範圍劃分的當地辦事處數目	4.3 Number of local offices by major line of business in Hong Kong, 2018	44
4.4 2018年按母公司的主要業務範圍劃分的當地辦事處數目	4.4 Number of local offices by major line of business of the parent company, 2018	45

5. 地區總部／地區辦事處／當地辦事處的意見	5. Views of regional headquarters/regional offices/local offices	
5.1 2018年有關選擇設立地區總部／地區辦事處／當地辦事處地點的因素的重要程度及香港就這些因素的有利程度的意見	5.1 Views on the importance of factors affecting the choice of a location for setting up regional headquarters/regional offices/local offices and Hong Kong's favourableness in respect of these factors, 2018	46
5.2 2014年至2018年地區總部／地區辦事處／當地辦事處於未來三年內在香港的業務計劃	5.2 Business plans in Hong Kong in the coming three years of regional headquarters/ regional offices/local offices, 2014 to 2018	47
5.3 2014年至2018年地區總部／地區辦事處／當地辦事處所提出香港特別行政區政府應關注的具體事項	5.3 Specific issues which regional headquarters/regional offices/local offices had raised for the attention of the Hong Kong Special Administrative Region Government, 2014 to 2018	48
5.4 2014年至2018年地區總部／地區辦事處／當地辦事處對投資推廣署的認識	5.4 Knowledge of regional headquarters/ regional offices/local offices about Invest Hong Kong, 2014 to 2018	49

## 摘要

### 引言

因應投資推廣署的要求，政府統計處進行了「2018年有香港境外母公司的駐港公司按年統計調查」，以研究有香港境外母公司的駐港地區總部、地區辦事處及當地辦事處的情況。

2. 這項統計調查以2018年6月1日作為統計日期，點算了有香港境外母公司的1 530間駐港地區總部、2 425間地區辦事處及4 799間當地辦事處。(表1.1)

### 地區總部

3. 美國駐港的地區總部數目最多(290間)，其次是日本(244)及中國內地(197)。(表2.1)

### 地區辦事處

4. 美國駐港的地區辦事處數目最多(434間)，其次是日本(421)及中國內地(255)。(表3.1)

### 當地辦事處

5. 中國內地駐港的當地辦事處數目最多(1 139間)，其次是日本(728)及美國(627)。(表4.1)

## Executive Summary

### Introduction

At the request of Invest Hong Kong, the Census and Statistics Department conducted the 2018 Annual Survey of Companies in Hong Kong with Parent Companies Located outside Hong Kong to study the profiles of regional headquarters (RHQs), regional offices (ROs) and local offices (LOs) in Hong Kong with their parent companies located outside Hong Kong.

2. The Survey enumerated, as at the reference date of 1 June 2018, 1 530 RHQs, 2 425 ROs and 4 799 LOs in Hong Kong with their parent companies located outside Hong Kong. (Table 1.1)

### Regional headquarters

3. The United States of America had the largest number of RHQs in Hong Kong (290 companies), followed by Japan (244) and the mainland of China (197). (Table 2.1)

### Regional offices

4. The United States of America had the largest number of ROs in Hong Kong (434 companies), followed by Japan (421) and the mainland of China (255). (Table 3.1)

### Local offices

5. The mainland of China had the largest number of LOs in Hong Kong (1 139 companies), followed by Japan (728) and the United States of America (627). (Table 4.1)

## 地區總部、地區辦事處及當地辦事處的主要業務範圍

6. 駐港的地區總部、地區辦事處及當地辦事處的主要業務範圍大致相同，它們主要從事進出口貿易、批發及零售業；金融及銀行業；專業、商用及教育服務業；以及運輸、倉庫及速遞服務業。(表2.3、3.3及4.3)

## 地區總部／地區辦事處／當地辦事處的意見

7. 這項統計調查從點算的駐港地區總部、地區辦事處及當地辦事處搜集其對以香港作為設立地區總部／地區辦事處／當地辦事處地點的意見。

8. 在各項可影響選擇於某一地點設立地區總部／地區辦事處／當地辦事處的因素中，簡單稅制及低稅率獲評為最重要的因素。其他重要因素，按其重要性由高至低排列，包括資訊的自由流通性；廉潔的政府；員工的生產力；以及法治及司法獨立性。事實上，上述的各重要因素分別獲50%至67%的地區總部／地區辦事處／當地辦事處評為香港的有利因素。(表5.1)

9. 大部分(67%)的地區總部／地區辦事處／當地辦事處認為簡單稅制及低稅率是香港的有利因素。按香港獲評的有利程度由高至低排列的其他有利因素，包括資訊的自由流通性(62%)；自由港地位(59%)；以及地理位置(59%)。(表5.1)

## Major lines of business of RHQs, ROs and LOs

6. The major lines of business were broadly the same for RHQs, ROs and LOs. They were mainly engaged in import/export trade, wholesale and retail; financing and banking; professional, business and education services; and transportation, storage and courier services. (Tables 2.3, 3.3 and 4.3)

## Views of RHQs/ROs/LOs

7. The Survey collected views on Hong Kong as a location for setting up RHQs/ROs/LOs from the RHQs, ROs and LOs enumerated in the Survey.

8. Among the factors affecting the choice of a location for setting up RHQs/ROs/LOs, simple tax system and low tax rate was considered to be the most important factor. Other important factors, in descending order of importance, included free flow of information; corruption-free government; productivity of staff and rule of law and independent judiciary. In fact, each of the important factors mentioned above was rated respectively by 50% to 67% of the RHQs/ROs/LOs to be favourable factors for Hong Kong. (Table 5.1)

9. Simple tax system and low tax rate was regarded by the majority of the RHQs/ROs/LOs (67%) as a favourable factor for Hong Kong. Other favourable factors, in descending order of Hong Kong's favourableness rating, included free flow of information (62%); free port status (59%); and geographical location (59%). (Table 5.1)

10. 另一方面，分別有43%及40%受訪的地區總部／地區辦事處／當地辦事處表示居所的供應及費用與工商業樓宇的供應及費用是香港的不利因素，但亦有11%及14%的公司分別認為居所的供應及費用與工商業樓宇的供應及費用是香港的有利因素。(表5.1)

11. 52%受訪的地區總部／地區辦事處／當地辦事處表示其在港的業務計劃於未來三年內維持不變，而21%表示計劃擴充在港業務。此外，19%則表示未能肯定其業務計劃，但2%的公司則計劃把部分或全部在香港的業務逐步終止或遷離香港。(表5.2)

10. On the other hand, 43% and 40% respectively of the RHQs/ROs/LOs surveyed expressed that the availability and cost of residential accommodation and availability and cost of business accommodation were unfavourable factors for Hong Kong, while 11% and 14% of them respectively regarded the availability and cost of residential accommodation and availability and cost of business accommodation as favourable factors. (Table 5.1)

11. 52% of the RHQs/ROs/LOs surveyed indicated that their business plans in Hong Kong would remain unchanged in the coming three years, while 21% indicated that they planned to expand their business in Hong Kong. Separately, 19% were uncertain about their business plans, while 2% planned to phase out/relocate outside Hong Kong part or all of their business in Hong Kong. (Table 5.2)



# 1. 引言

## 背景

1.1 自1990年代初，有關公司為代表香港境外母公司的駐港地區總部及地區辦事處的資料，由前工業署進行按年統計調查搜集。前工業署於2000年7月改組後，政府統計處便應投資推廣署的要求進行「海外公司駐香港的地區代表按年統計調查」，以搜集該些資料。

1.2 自2001年起，有關統計調查的涵蓋範圍擴展至包括公司為代表香港境外母公司的駐港當地辦事處。該統計調查自2006年起改稱為「代表香港境外母公司的駐港公司按年統計調查」。

1.3 參考國際標準，有關統計調查的涵蓋範圍已於2018年擴闊至有香港境外母公司但並不代表其母公司的駐港公司。因此，該統計調查於2018年改稱為「有香港境外母公司的駐港公司按年統計調查」。

## 統計調查目的

1.4 這項統計調查的目的是：

- (a) 點算有香港境外母公司的駐港地區總部、地區辦事處及當地辦事處；

# 1. Introduction

## Background

1.1 Starting from the early 1990s, information on companies in Hong Kong that were regional headquarters (RHQs) and regional offices (ROs) representing their parent companies located outside Hong Kong had been collected through an annual survey conducted by the ex-Industry Department. Since the disestablishment of the ex-Industry Department in July 2000, the Census and Statistics Department (C&SD) has been conducting the Annual Survey of Regional Offices Representing Overseas Companies in Hong Kong to collect such information, at the request of Invest Hong Kong.

1.2 As from 2001, the survey coverage has been extended to include companies in Hong Kong that are local offices (LOs) representing their parent companies located outside Hong Kong. The Survey has been renamed as the Annual Survey of Companies in Hong Kong Representing Parent Companies Located outside Hong Kong with effect from 2006.

1.3 With reference to international standard, the scope of the survey has been expanded in 2018 to cover companies with parent companies located outside Hong Kong but not representing their parent companies. As a result, the Survey has been renamed as the Annual Survey of Companies in Hong Kong with Parent Companies Located outside Hong Kong.

## Survey objectives

1.4 The objectives of the Survey are :

- (a) to enumerate RHQs, ROs and LOs in Hong Kong with their parent companies located outside Hong Kong;

- (b) 搜集這些公司的基本資料（如就業人數、主要業務範圍、母公司所在的國家／地區）；及
- (c) 向這些公司徵詢以香港作為設立地區總部／地區辦事處／當地辦事處地點的吸引力的意見。

- (b) to obtain basic information (e.g. the number of persons engaged, major line of business, country/territory where the parent company is located) of these companies; and
- (c) to seek views from these companies on the attractiveness of Hong Kong as a location for setting up RHQs/ROs/LOs.

## 有關法例

1.5 這項統計調查是根據《普查及統計條例》(第316章) 第IIIA部進行，屬自願性質，並在香港特別行政區政府憲報於2018年4月27日所刊登的第2816號政府公告宣布進行。該條例規定，所有搜集得來可分辨個別公司的資料必予嚴加保密，不得把該等資料給予任何未獲授權的人士。

## Legislation

1.5 The Survey was conducted under Part IIIA of the Census and Statistics Ordinance (Chapter 316) and notified in the Government Notice No. 2816 in the Government of the Hong Kong Special Administrative Region Gazette of 27 April 2018 as a voluntary statistical survey. The said Ordinance stipulates that all collected information which may enable identification of individual companies should be kept in strict confidence and not be released to any unauthorised parties.

## 用語及定義

1.6 就這項統計調查而言：

- (a) **地區總部** 是指有香港境外母公司，並對區內（即香港及另一個或多個地方）各辦事處及／或運作擁有管理權的一家辦事處；
- (b) **地區辦事處** 是指有香港境外母公司，並負責協調區內（即香港及另一個或多個地方）各辦事處及／或運作的一家辦事處；
- (c) **當地辦事處** 是指有香港境外母公司，而只負責香港（但不負責任何其他地方）業務的一家辦事處；及

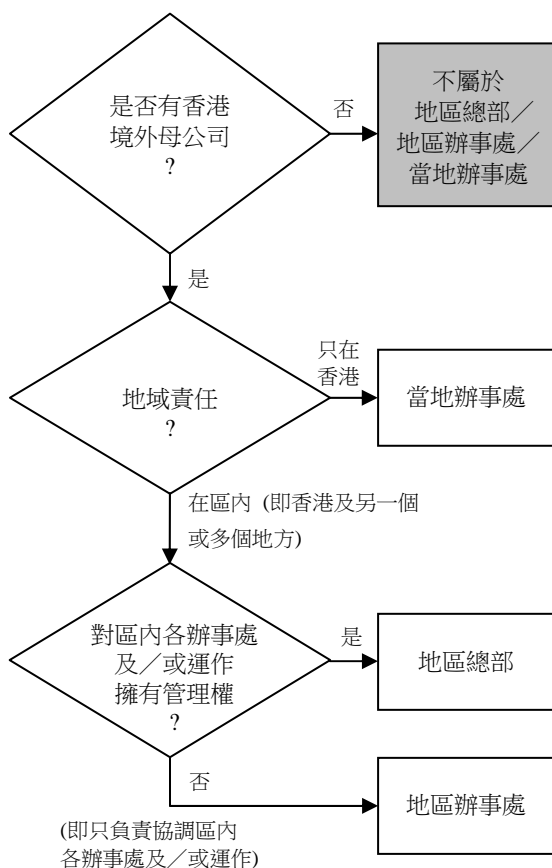
## Terms and definitions

1.6 For the purpose of the Survey :

- (a) a **regional headquarters (RHQ)** is an office with parent company located outside Hong Kong which has managerial control over offices and/or operations in the region (i.e. Hong Kong plus one other place or more);
- (b) a **regional office (RO)** is an office with parent company located outside Hong Kong which co-ordinates offices and/or operations in the region (i.e. Hong Kong plus one other place or more);
- (c) a **local office (LO)** is an office with parent company located outside Hong Kong which only takes charge of the business in Hong Kong (and nowhere else); and

- (d) **香港境外的母公司** 是指對其轄下駐港辦事處的運作擁有最終管理權的香港境外公司或組織。

1.7 下圖展示如何把一間公司分類為地區總部、地區辦事處或當地辦事處。



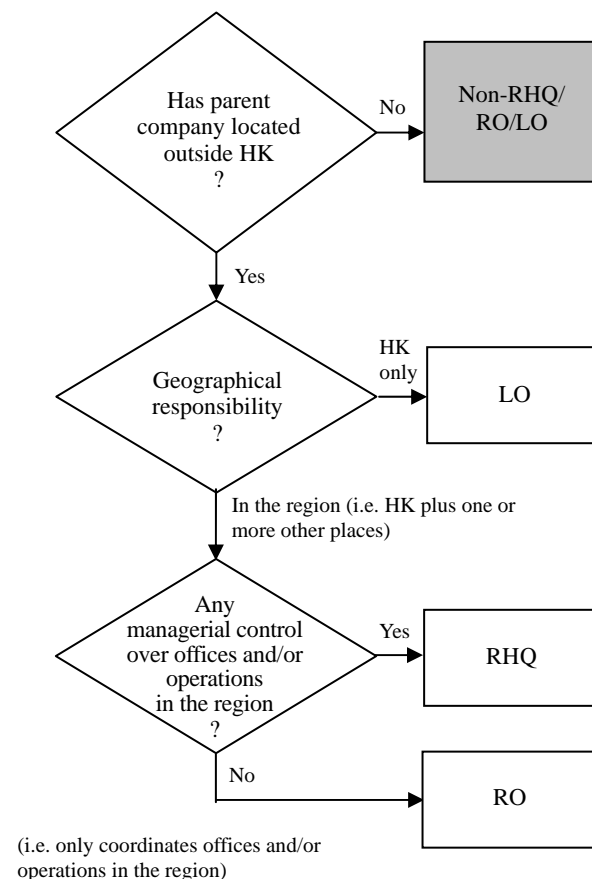
## 統計調查範圍

1.8 這項統計調查只涵蓋那些有香港境外母公司，並負責管理／協調在香港或區內業務的公司。它並不包括下列類別的公司：

- (a) 其母公司亦在香港；或
- (b) 其控股公司雖然是在香港境外地方，但實質上是無經營業務的公司；或

- (d) a **parent company located outside Hong Kong** is a company or an organisation operating outside Hong Kong that has final management control over that office in Hong Kong.

1.7 A schematic diagram illustrating the classification of a company as an RHQ, RO or LO is given below.



## Survey coverage

1.8 The Survey only covers companies which have parent companies located outside Hong Kong and are responsible for managing/ co-ordinating the business in Hong Kong or in the region. It does not cover the following categories of companies :

- (a) companies whose parent companies are also in Hong Kong; or
- (b) companies whose holding companies, though located outside Hong Kong, are actually non-operating companies; or

- (c) 有接受香港境外地方投入資本的公司，但有關投資實質上是來自香港的資本。

1.9 基於上述原因，駐港的地區總部／地區辦事處／當地辦事處的總數，並不等於所有涉及香港境外資本的公司。此外，駐港的地區總部及地區辦事處的總數，亦不代表所有涉及地區運作（即管理在香港及另一個或多個地方的業務）的公司，因為涉及地區運作的本地公司並不包括在內。

1.10 香港沒有法令規定某一公司須通知政府它是否地區總部／地區辦事處／當地辦事處。因此，這項統計調查並沒有一個最新、完整、準確而又載有所有受訪單位（即這項統計調查應涵蓋的公司）的抽樣框。

1.11 載有這項統計調查所涵蓋的公司的抽樣框是根據以下資料編製而成：

- (a) 在2017年這項統計調查中受訪的地區總部／地區辦事處／當地辦事處；
- (b) 駐港的領事館、外國商務專員公署及商會；
- (c) 商業指南、傳媒報道及投資推廣署的工作接觸；
- (d) 公司註冊處的最新資料；及
- (e) 其他資料（例如：從政府統計處所得的相關資料）。

- (c) companies which are funded by investment from outside Hong Kong, but the investment is actually originated from Hong Kong.

1.9 For the above reasons, the total number of RHQs/ROs/LOs in Hong Kong does not represent all companies with investment from outside Hong Kong. Besides, the total number of RHQs and ROs in Hong Kong does not represent all companies with regional operations (i.e. managing the business in Hong Kong plus one or more other places), as local companies with regional operations are not included.

1.10 In Hong Kong, there is no statutory requirement for a company to notify the Government whether it is an RHQ/RO/LO. Thus an up-to-date, complete and accurate sampling frame of all units of enquiry (i.e. companies to be covered in the Survey) is not readily available for the Survey.

1.11 The sampling frame containing companies covered in the Survey is derived from the following sources:

- (a) RHQs/ROs/LOs enumerated in the 2017 round of the Survey;
- (b) consulates, trade commissions and chambers of commerce of overseas countries in Hong Kong;
- (c) business directories, media reports and working contacts of Invest Hong Kong;
- (d) up-to-date information from the Companies Registry; and
- (e) other sources (e.g. relevant information available from C&SD).

1.12 具體來說，2018年統計調查的抽樣框已根據從公司註冊處、領事館及外國商會取得的額外資料，作出改善。

## 抽選樣本

1.13 上文1.11段所述抽樣框內的所有公司均被抽選參與這項統計調查，以辨識及點算當中的地區總部／地區辦事處／當地辦事處。該些從1.11段資料來源 (b) 至 (e) 識別出的地區總部／地區辦事處／當地辦事處均被問及這項統計調查的全部問題，包括該些公司的基本資料及對香港作為設立其公司地點的吸引力的意見（以下簡稱為「有關香港的吸引力的意見」）等問題。

1.14 至於從1.11段資料來源 (a) 識別出的地區總部／地區辦事處／當地辦事處，所有這些公司會被問及其基本資料等問題。但為了減輕這些公司提供資料的負擔，而可同時保持統計調查結果的可靠性，只有從資料來源 (a) 識別出的地區辦事處／當地辦事處中以科學方法抽選的樣本才須提供有關香港的吸引力的意見。另一方面，鑑於地區總部的相對重要性，所有從資料來源 (a) 識別出的地區總部仍會被問及有關香港的吸引力的意見。樣本內的地區辦事處／當地辦事處的意見會被適當地倍大，並與地區總部的意見合計，以代表所有從資料來源 (a) 識別出的地區總部／地區辦事處／當地辦事處的意見。上述減輕受訪公司負擔的措施由2011年開始推行。

## 統計日期

1.15 2018年統計調查所搜集的數據，是以2018年6月1日為統計日期。

1.12 Specifically, the sampling frame for the 2018 Survey has been enriched by including additional information obtained from the Companies Registry, consulates and chambers of commerce of overseas countries in Hong Kong.

## Sample selection

1.13 All companies listed in the sampling frame as mentioned in paragraph 1.11 above were selected to participate in the Survey with a view to identifying and enumerating all RHQs/ROs/LOs amongst them. Those RHQs/ROs/LOs identified from sources (b) to (e) in paragraph 1.11 were asked all questions in the Survey, including questions on their basic information and their views on the attractiveness of Hong Kong as a location for setting up their companies here [referred to as “views on HK’s attractiveness” below for simplicity].

1.14 As regards RHQs/ROs/LOs identified from source (a) in paragraph 1.11, all were asked questions on their basic information in the Survey. However, in order to reduce the reporting burden of these companies while maintaining the reliability of the survey findings, only a scientifically selected sample of ROs/LOs identified from source (a) was required to give their views on HK’s attractiveness. On the other hand, all RHQs identified from source (a) were still asked to provide their views on HK’s attractiveness in view of the relative importance of RHQs. The views of the sampled ROs/LOs were then appropriately grossed up and aggregated with those of RHQs to represent the views of all RHQs/ROs/LOs identified from source (a). The measure mentioned above for reducing respondent burden has been introduced since 2011.

## Survey reference date

1.15 Data collected in the 2018 Survey refer to the position as at 1 June 2018.

## 數據搜集

1.16 2018年統計調查的問卷於2018年6月初寄給所有被抽選的公司。此外，亦製備問卷的電子版本，供公司填報及以電郵方式提交。一批大學生於暑假期間受僱以電話聯絡及協助有關公司填寫問卷，以及核實所收回問卷內的數據。此外，亦採用面談訪問的方式就那些對郵寄問卷或電話訪問不回應的公司作出跟進。這有助提高統計調查的回應率，以編製較準確的統計調查結果，並為建立之後年度統計調查所涵蓋的公司的抽樣框提供更堅實的基礎。

1.17 截至2018年10月初，2018年統計調查成功訪問的公司有8 754間，而未有回應的公司有275間。

## 數據處理

1.18 填妥交回的問卷經人手及電腦審核後，方進行製表工作。審核程序包括查核填報的數據是否完整無缺、前後一致以及確實可信。遇有含糊或前後不一致的數據，政府統計處職員會致電或到訪有關公司求證。

## 主要業務範圍的分類

1.19 這項統計調查採用「香港標準行業分類2.0版」，劃分受訪公司的主要業務範圍。「香港標準行業分類」是以聯合國的「國際標準行業分類」為藍本，配合本地情況作出編訂，從而反映本港的經濟結構。

## Data collection

1.16 Questionnaires of the 2018 Survey were mailed out in early June 2018 to all selected companies. An electronic template of the questionnaire was also available upon request to facilitate completion and submission by email. University students were employed during the summer vacation to make initial telephone contacts to assist the companies concerned in completing the questionnaires and verify the data in the returned questionnaires. Face-to-face interviews were also arranged to follow up with those companies not responding to postal or telephone enumeration. This helped improve the survey response rate, leading to more accurate survey results and a more solid foundation for constructing the sampling frame of companies for future survey rounds.

1.17 By early October 2018, 8 754 companies were successfully enumerated in the 2018 Survey, while 275 failed to respond.

## Data processing

1.18 Completed questionnaires were subject to manual and computerised validation before tabulation. Such checking covered completeness of entries, consistency among data items and credibility of reported data. For dubious entries or inconsistent data, clarifications were made with the companies concerned by phone or by field visits.

## Classification of major line of business

1.19 The Hong Kong Standard Industrial Classification (HSIC) Version 2.0 is adopted for classifying the major line of business of the companies in the Survey. The HSIC is devised by using the United Nations' International Standard Industrial Classification as the framework, with local adaptation to reflect the structure of the Hong Kong economy.

## 母公司所在的國家／地區的分類

1.20 於1997年7月1日，香港成為中華人民共和國的特別行政區。在本報告中，「香港」是指香港特別行政區。按照「一國兩制」的原則，香港是一個獨立的經濟領域。因此，這項統計調查亦涵蓋中國內地的母公司駐港的地區總部、地區辦事處及當地辦事處。

## 注意事項

1.21 由於缺乏一個載有這項統計調查所涵蓋的公司的完整抽樣框，每年度統計調查所點算的地區總部、地區辦事處及當地辦事處數目只代表進行統計調查時的最佳點算。加上這項統計調查屬自願性質，不同年份之間的地區總部、地區辦事處及當地辦事處數目的變動可能會受抽樣框的持續改善以及回應率所影響。具體來說，2018年統計調查的抽樣框已根據從公司註冊處、領使館及外國商會取得的額外資料，作出改善。統計調查的涵蓋範圍亦已擴闊至有香港境外母公司但並不代表其母公司的駐港公司；惟此變動對統計調查結果所造成的影響不大。此外，有關公司在不同年份之間的總就業人數的變動亦可能受到不同就業人數的公司的回應情況所影響。因應上述的局限，在闡釋統計調查結果時須特別小心。

## 數字的捨入

1.22 由於四捨五入關係，統計表內個別項目的數字加起來可能與總數略有出入。

## Classification of country/territory where the parent company was located

1.20 On 1 July 1997, Hong Kong became a Special Administrative Region of the People's Republic of China. In this report, "Hong Kong" stands for the Hong Kong Special Administrative Region. Under the principle of "One Country, Two Systems", Hong Kong is a separate economic territory. Hence, the Survey also covers RHQs, ROs and LOs in Hong Kong set up by their parent companies in the mainland of China.

## Cautionary remarks

1.21 Owing to the lack of a complete sampling frame of companies covered in the Survey, the number of RHQs, ROs and LOs enumerated in each survey round represents only the best snapshot that could be taken at the time of the Survey. Coupled with the voluntary nature of the Survey, changes between years in the number of RHQs, ROs and LOs may be affected by the continuous improvement in the sampling frame of companies and response rate. Specifically, the sampling frame for the 2018 Survey has been enriched by including additional information obtained from the Companies Registry, consulates and chambers of commerce of overseas countries in Hong Kong. The scope of the Survey has also been expanded in the 2018 Survey to cover companies with parent companies located outside Hong Kong but not representing their parent companies, although the effect of such change on the survey results is relatively insignificant. Furthermore, changes between years in the total number of persons engaged by these companies may also be affected by the response pattern of companies of different employment sizes. With all the limitations mentioned above, the survey results should be interpreted with some caution.

## Rounding of figures

1.22 There may be a slight discrepancy between the sum of individual items and the total as shown in the tables owing to rounding.

## 2. 地區總部

### 概覽

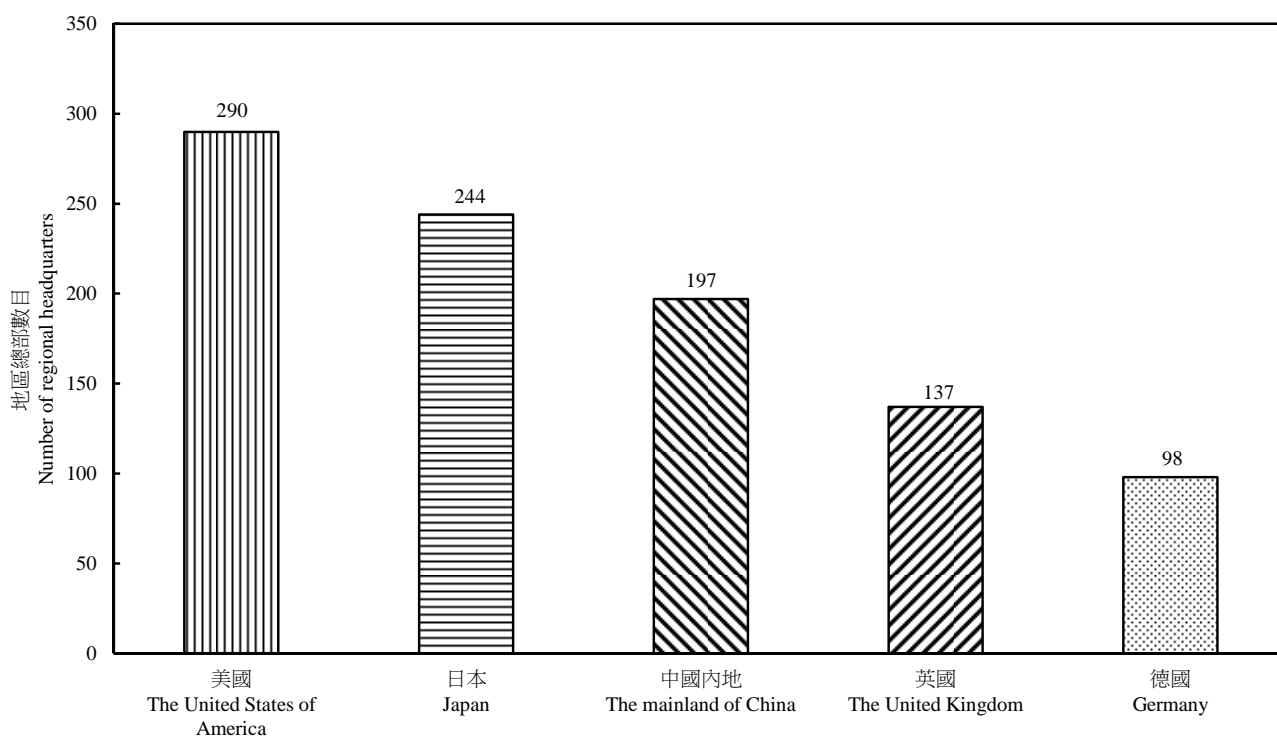
2.1 香港作為設立地區總部地點的角色，歷史相當悠久，但直至1980年代才開始顯得重要。這項統計調查以2018年6月1日作為統計日期，點算了1 530間有香港境外母公司的駐港地區總部。2017年6月1日的相應數目為1 413。(表1.1)

### 母公司所在的國家／地區

2.2 按母公司所在的國家／地區分析，美國駐港的地區總部數目最多(290間)，其次是日本(244)、中國內地(197)、英國(137)及德國(98)。(圖1及表2.1)

圖 1 2018 年按母公司所在的國家／地區劃分的地區總部數目

Chart 1 Number of regional headquarters by country/territory where the parent company was located, 2018



母公司所在的國家／地區 (只顯示首5位)  
Country/Territory where the parent company was located (Only the top 5 are shown)

## 2. Regional headquarters

### Overview

2.1 Hong Kong's role as a location for setting up RHQs has a long history, but it began to assume significance only from the 1980s. The Survey enumerated, as at the reference date of 1 June 2018, 1 530 RHQs in Hong Kong with their parent companies located outside Hong Kong. The corresponding number as at 1 June 2017 was 1 413. (Table 1.1)

### Country/Territory where the parent company was located

2.2 Analysed by the country/territory where the parent company was located, **the United States of America** had the largest number of RHQs in Hong Kong (290 companies), followed by **Japan** (244), **the mainland of China** (197), **the United Kingdom** (137) and **Germany** (98). (Chart 1 and Table 2.1)



## 公司規模 (按就業人數計算)

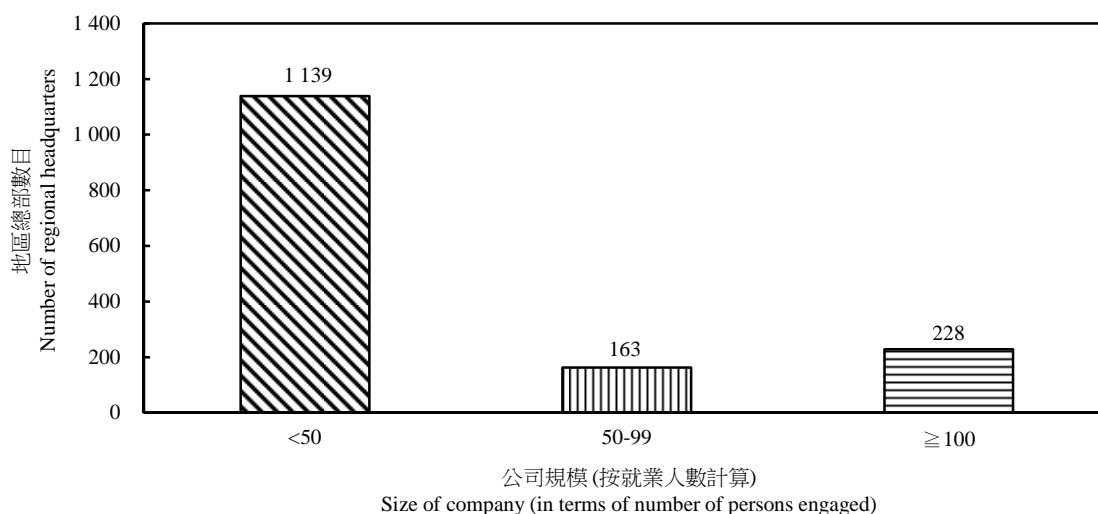
2.3 這1 530間地區總部的總就業人數約為196 000人，平均每間的就業人數約為128人。約85%的地區總部每間的就業人數少於100人，而餘下15%的較大規模地區總部的就業人數則佔駐港地區總部的總就業人數的87%。(圖2及表2.2)

## Size of company (in terms of employment)

2.3 The total number of persons engaged by the 1 530 RHQs was about 196 000, with each RHQ engaging around 128 persons on average. While some 85% of the RHQs engaged less than 100 persons each, the remaining 15%, being larger RHQs, accounted for 87% of the total number of persons engaged by the RHQs in Hong Kong. (Chart 2 and Table 2.2)

圖 2 2018 年按公司規模劃分的地區總部數目

Chart 2 Number of regional headquarters by size of company, 2018



## 主要業務範圍

2.4 按在香港的主要業務範圍分析，760間地區總部從事進出口貿易、批發及零售業，其次是金融及銀行業 (262間)；專業、商用及教育服務業 (225)；以及運輸、倉庫及速遞服務業 (116)。(圖3及表2.3)

## Major line of business

2.4 Analysed by the major line of business in Hong Kong, 760 RHQs were engaged in **import/export trade, wholesale and retail**. This was followed by **financing and banking** (262 companies); **professional, business and education services** (225); and **transportation, storage and courier services** (116). (Chart 3 and Table 2.3)

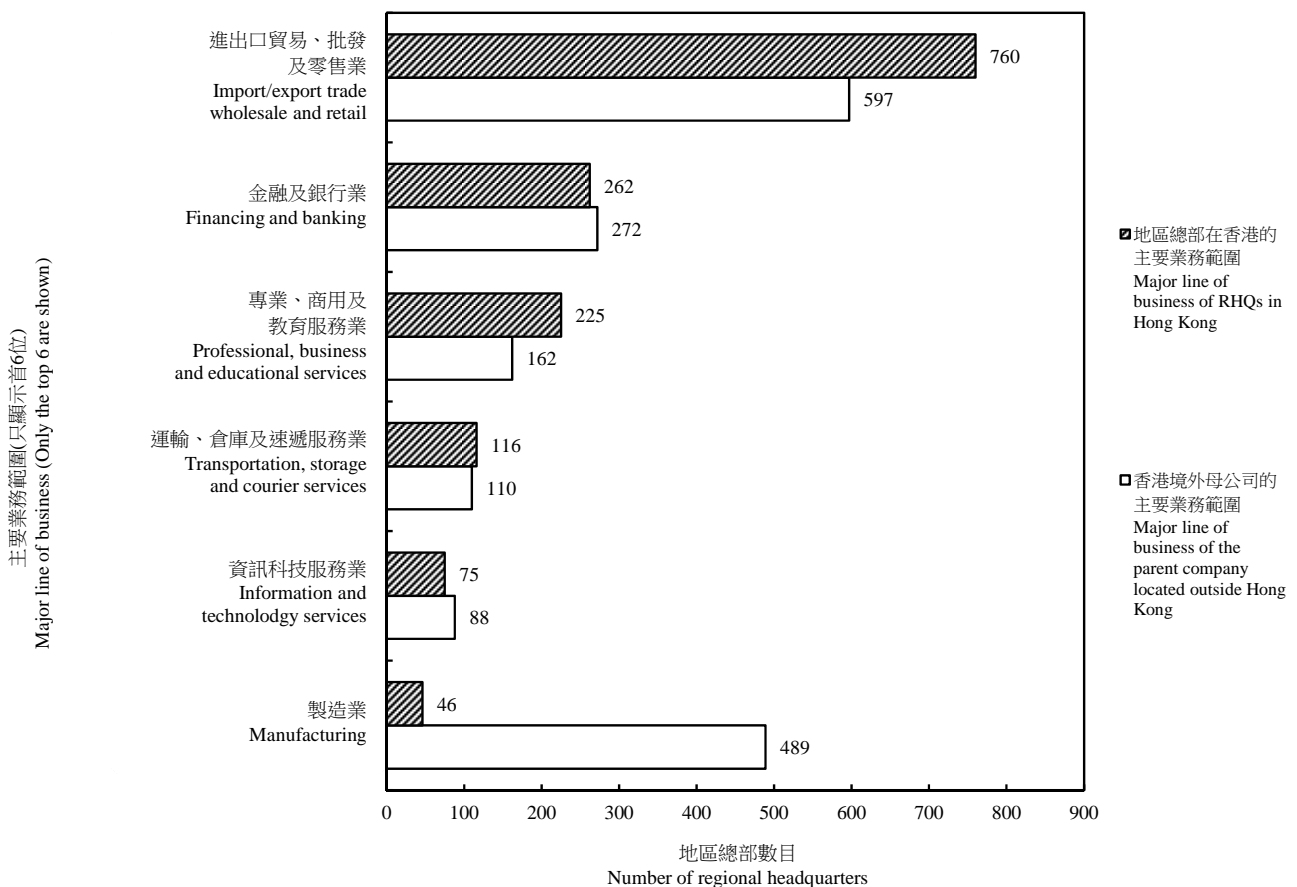
2.5 至於香港境外母公司的主要業務範圍，597間地區總部表示其母公司從事**進出口貿易、批發及零售業**。母公司所從事的其他主要業務範圍包括**製造業** (489間)；**金融及銀行業** (272)；**專業、商用及教育服務業** (162)；以及**運輸、倉庫及速遞服務業** (110)。(圖3及表2.4)

2.6 一般而言，地區總部的主要業務範圍通常與其母公司的主要業務範圍屬同一類別。但值得注意的是，母公司從事**製造業**的地區總部數目(489)，遠超於本身在香港的主要業務範圍為**製造業**的地區總部數目(46)。這主要是由於有不少從事**進出口貿易、批發及零售業**的駐港地區總部，實際上負責為其境外母公司製造的產品提供銷售及相關服務。(圖3)

2.5 On the major line of business of the parent companies located outside Hong Kong, 597 RHQs reported that their parent companies were engaged in **import/export trade, wholesale and retail**. Other major lines of business of the parent companies included **manufacturing** (489 companies); **financing and banking** (272); **professional, business and education services** (162); and **transportation, storage and courier services** (110). (Chart 3 and Table 2.4)

2.6 Generally speaking, the major line of business of an RHQ was usually in the same category as that of its parent company. But it should be noted that the number of RHQs with parent companies engaged in **manufacturing** (489) far exceeded the number of RHQs with their own major line of business in Hong Kong being manufacturing (46). This was mainly because quite a number of RHQs which were engaged in **import/export trade, wholesale and retail** in Hong Kong were in fact responsible for providing sales and related services for products manufactured by their parent companies outside Hong Kong. (Chart 3)

**圖 3 2018 年按主要業務範圍劃分的地區總部數目**  
**Chart 3 Number of regional headquarters by major line of business, 2018**



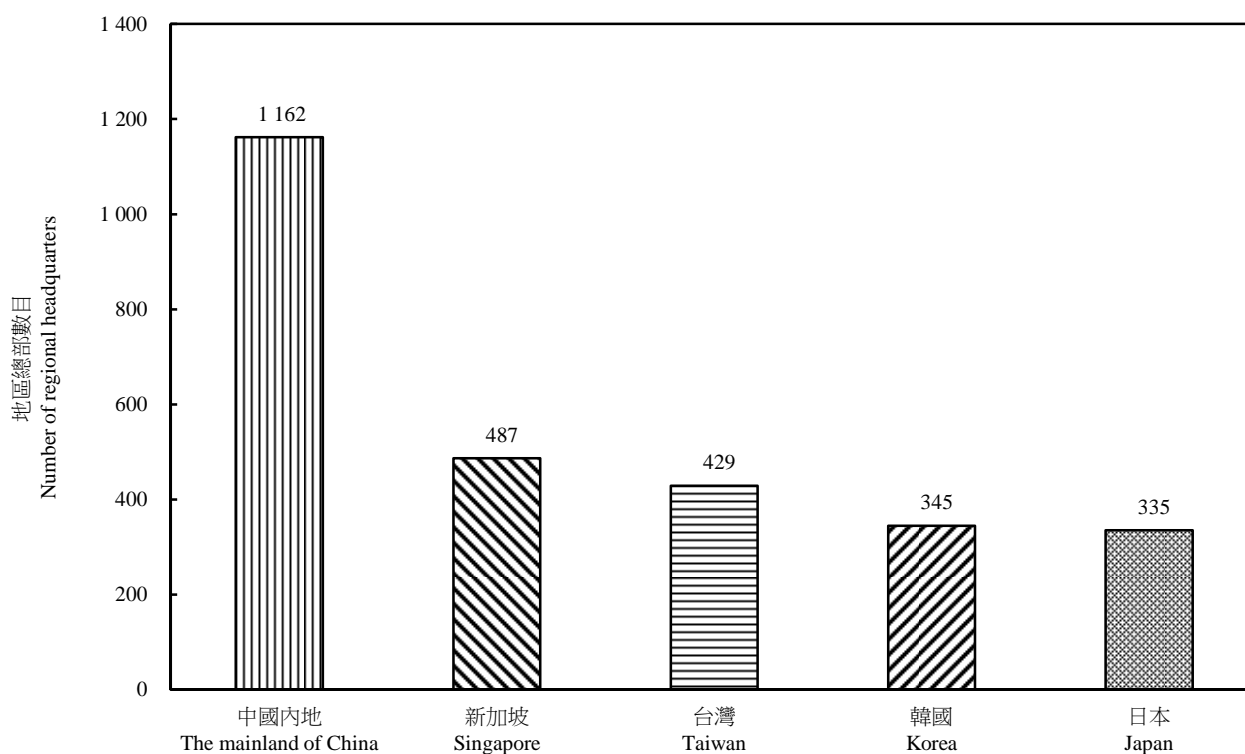
## 區內地域責任

2.7 1 162間地區總部除負責香港的業務／運作外，亦負責中國內地的業務／運作。地區總部的地域責任為新加坡的有487間，其次是台灣 (429間)、韓國 (345) 及日本 (335)。(圖4及表2.5)

## Geographical responsibility in the region

2.7 1 162 RHQs were responsible for the business/operations in **the mainland of China** in addition to those in Hong Kong. RHQs with **Singapore** under their geographical responsibility stood at 487, followed by **Taiwan** (429 companies), **Korea** (345), and **Japan** (335). (Chart 4 and Table 2.5)

圖 4 2018 年按區內地域責任 (香港除外) 劃分的地區總部數目  
Chart 4 Number of regional headquarters by geographical responsibility in the region (other than Hong Kong), 2018



區內地域責任 (香港除外) (只顯示首5位)  
Geographical responsibility in the region (other than Hong Kong) (Only the top 5 are shown)

### 3. 地區辦事處

#### 概覽

3.1 這項統計調查以2018年6月1日作為統計日期，點算了2 425間有香港境外母公司的駐港地區辦事處。2017年6月1日的相應數目為2 339。(表1.1)

#### 母公司所在的國家／地區

3.2 按母公司所在的國家／地區分析，美國駐港的地區辦事處數目最多(434間)，其次是日本(421)、中國內地(255)、英國(219)、德國(139)及法國(119)。(圖5及表3.1)

### 3. Regional offices

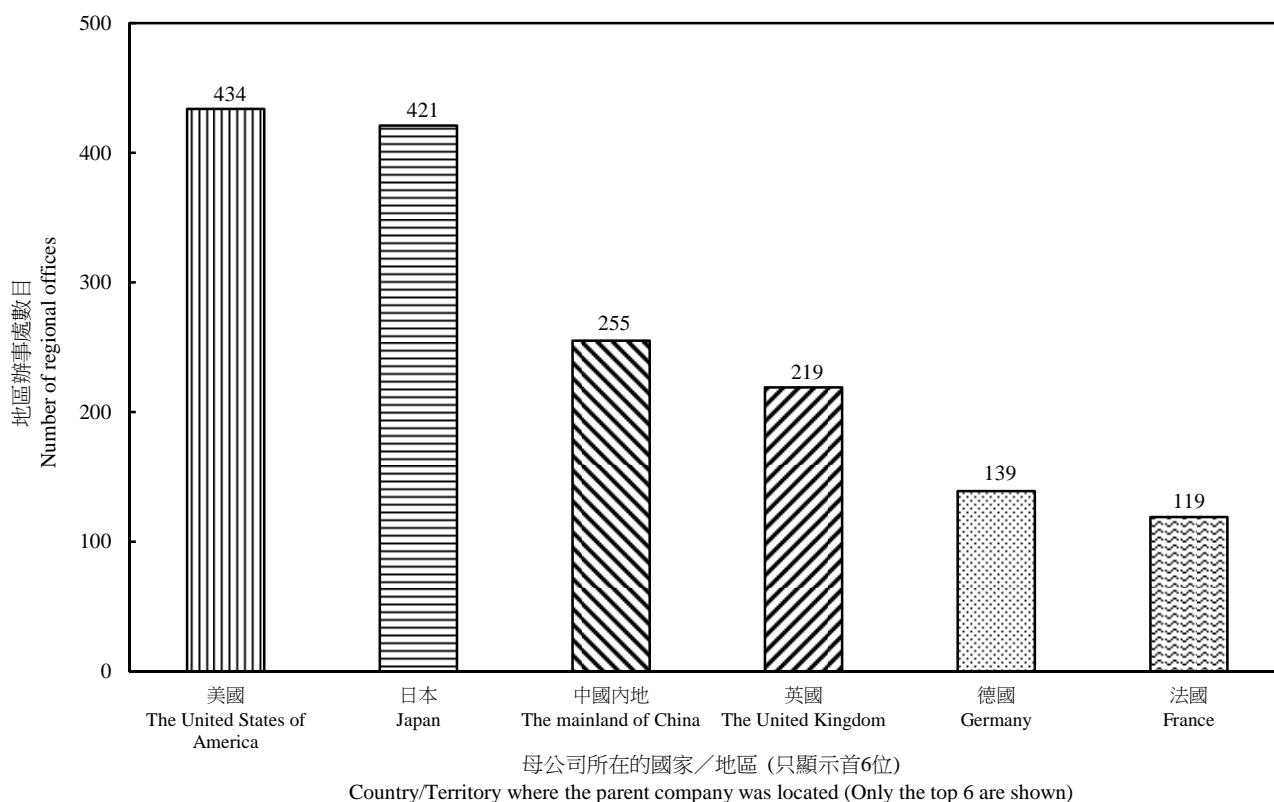
#### Overview

3.1 The Survey enumerated, as at the reference date of 1 June 2018, 2 425 ROs in Hong Kong with their parent companies located outside Hong Kong. The corresponding number as at 1 June 2017 was 2 339. (Table 1.1)

#### Country/Territory where the parent company was located

3.2 Analysed by the country/territory where the parent company was located, the **United States of America** had the largest number of ROs in Hong Kong (434 companies), followed by **Japan** (421), **the mainland of China** (255), **the United Kingdom** (219), **Germany** (139) and **France** (119). (Chart 5 and Table 3.1)

圖 5 2018 年按母公司所在的國家／地區劃分的地區辦事處數目  
Chart 5 Number of regional offices by country/territory where the parent company was located, 2018



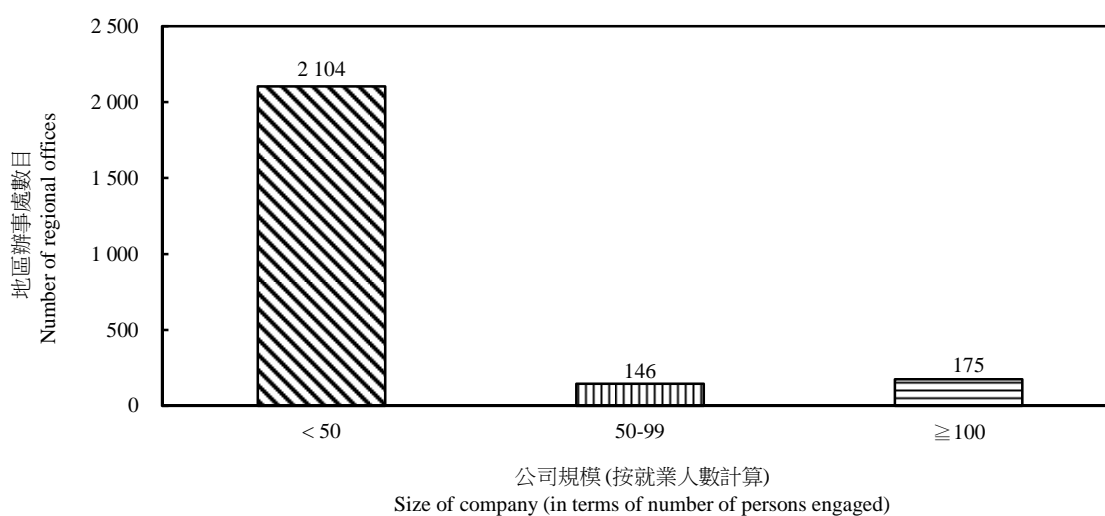
## 公司規模 (按就業人數計算)

3.3 這2 425間地區辦事處的總就業人數約為88 000人，平均每間的就業人數約為36人。約87%的地區辦事處每間的就業人數少於50人，而餘下13%的較大規模地區辦事處的就業人數則佔駐港地區辦事處的總就業人數的77%。(圖6及表3.2)

## Size of company (in terms of employment)

3.3 The total number of persons engaged by the 2 425 ROs was about 88 000, with each RO engaging around 36 persons on average. While some 87% of the ROs engaged less than 50 persons each, the remaining 13%, being larger ROs, accounted for 77% of the total number of persons engaged by the ROs in Hong Kong. (Chart 6 and Table 3.2)

圖 6 2018 年按公司規模劃分的地區辦事處數目  
Chart 6 Number of regional offices by size of company, 2018



## 主要業務範圍

3.4 按在香港的主要業務範圍分析，1 283間地區辦事處從事進出口貿易、批發及零售業，其次是專業、商用及教育服務業 (386間)；金融及銀行業 (326)；運輸、倉庫及速遞服務業 (166)；以及資訊科技服務業(110)。(圖7及表3.3)

## Major line of business

3.4 Analysed by the major line of business in Hong Kong, 1 283 ROs were engaged in **import/export trade, wholesale and retail**. This was followed by **professional, business and education services** (386 companies); **financing and banking** (326); **transportation, storage and courier services** (166); and **information technology services** (110). (Chart 7 and Table 3.3)

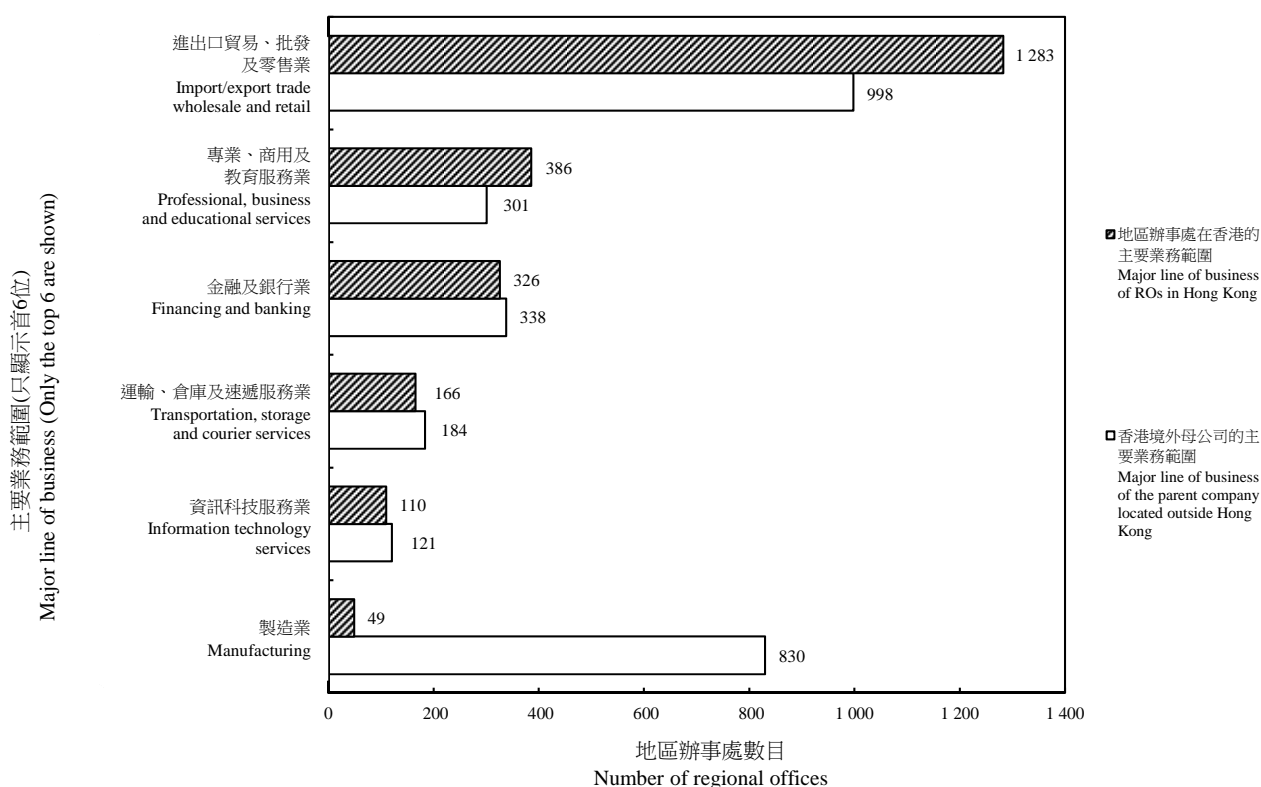
3.5 至於香港境外母公司的主要業務範圍，998間地區辦事處表示其母公司從事**進出口貿易、批發及零售業**。母公司所從事的其他主要業務範圍包括**製造業**（830間）；**金融及銀行業**（338）；**專業、商用及教育服務業**（301）；**運輸、倉庫及速遞服務業**（184）；以及**資訊科技服務業**（121）。（圖7及表3.4）

3.6 一般而言，地區辦事處的主要業務範圍通常與其母公司的主要業務範圍屬同一類別。但值得注意的是，母公司從事**製造業**的地區辦事處數目（830），遠超於本身在香港的主要業務範圍為**製造業**的地區辦事處數目（49）。這主要是由於有不少從事**進出口貿易、批發及零售業**的駐港地區辦事處，實際上負責為其境外母公司製造的產品提供銷售及相關服務。（圖7）

3.5 On the major line of business of the parent companies located outside Hong Kong, 998 ROs reported that their parent companies were engaged in **import/export trade, wholesale and retail**. Other major lines of business of the parent companies included **manufacturing** (830 companies); **financing and banking** (338); **professional, business and education services** (301); **transportation, storage and courier services** (184); and **information technology services** (121). (Chart 7 and Table 3.4)

3.6 Generally speaking, the major line of business of an RO was usually in the same category as that of its parent company. But it should be noted that the number of ROs with parent companies engaged in **manufacturing** (830) far exceeded the number of ROs with their own major line of business in Hong Kong being manufacturing (49). This was mainly because quite a number of ROs which were engaged in **import/export trade, wholesale and retail** in Hong Kong were in fact responsible for providing sales and related services for products manufactured by their parent companies outside Hong Kong. (Chart 7)

圖 7 2018 年按主要業務範圍劃分的地區辦事處數目  
Chart 7 Number of regional offices by major line of business, 2018



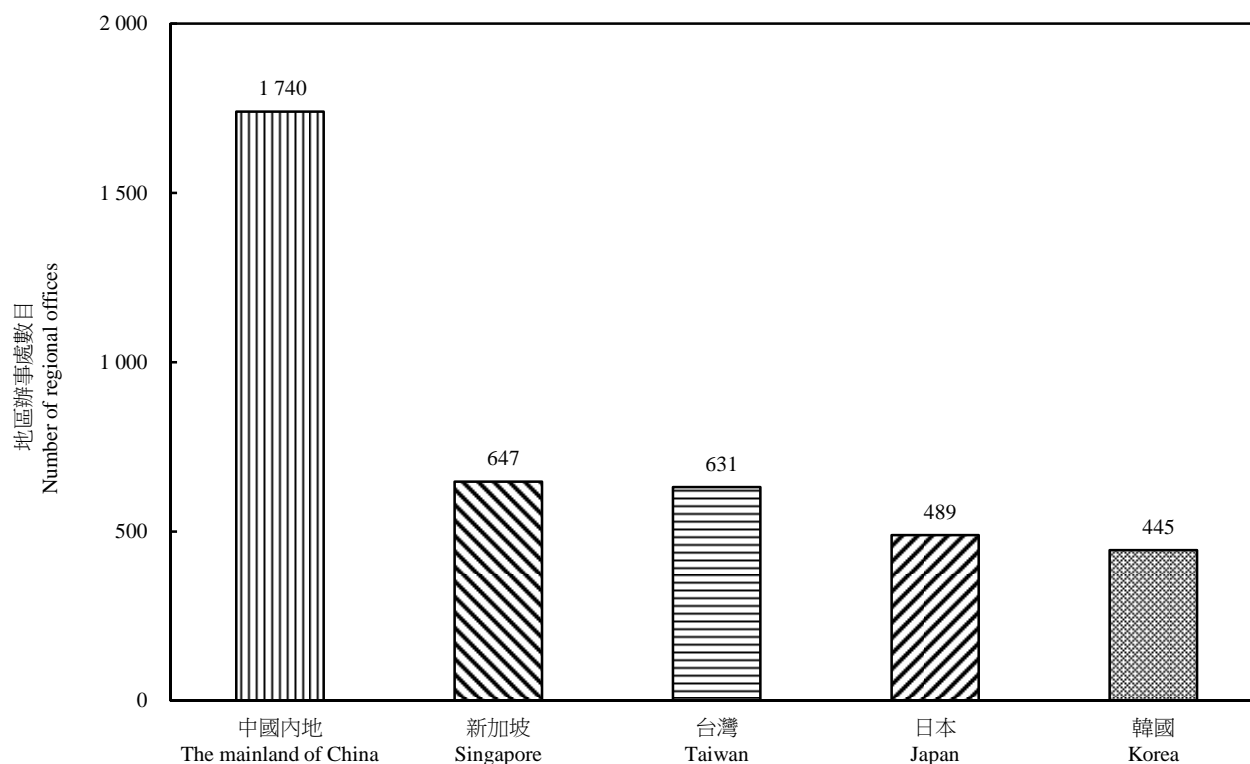
## 區內地域責任

3.7 1 740間地區辦事處除負責香港的業務／運作外，亦負責中國內地的業務／運作。地區辦事處的地域責任為新加坡的有647間，其次是台灣（631間）、日本（489）及韓國（445）。（圖8及表3.5）

## Geographical responsibility in the region

3.7 1 740 ROs were responsible for the business/operations in **the mainland of China** in addition to those in Hong Kong. ROs with **Singapore** under their geographical responsibility stood at 647, followed by **Taiwan** (631 companies), **Japan** (489), and **Korea** (445). (Chart 8 and Table 3.5)

圖 8 2018 年按區內地域責任（香港除外）劃分的地區辦事處數目  
Chart 8 Number of regional offices by geographical responsibility in the region (other than Hong Kong), 2018



區內地域責任（香港除外）（只顯示首5位）  
Geographical responsibility in the region (other than Hong Kong) (Only the top 5 are shown)

## 4. 當地辦事處

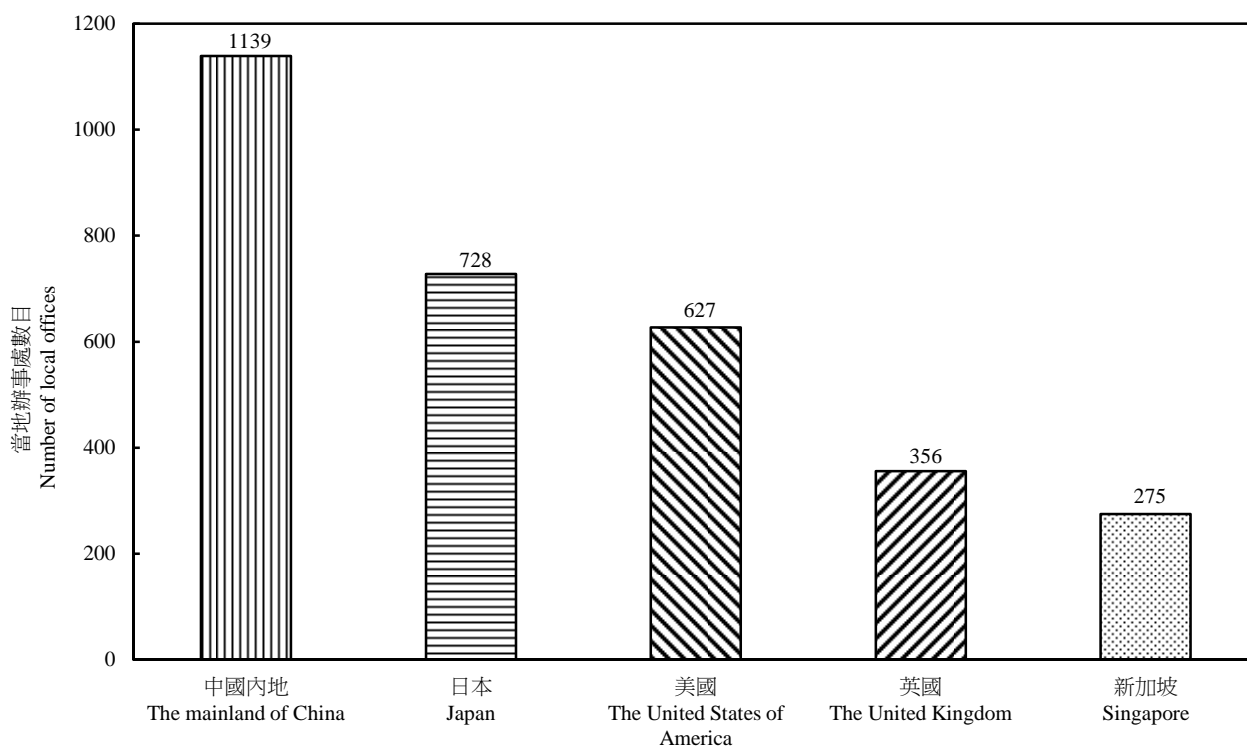
### 概覽

4.1 這項統計調查以2018年6月1日作為統計日期，點算了4 799間有香港境外母公司的駐港當地辦事處。2017年6月1日的相應數目為4 473。(表1.1)

### 母公司所在的國家／地區

4.2 按母公司所在的國家／地區分析，中國內地駐港的當地辦事處數目最多 (1 139間)，其次是日本 (728)、美國 (627)、英國 (356) 及新加坡 (275)。(圖9及表4.1)

圖9 2018年按母公司所在的國家／地區劃分的當地辦事處數目  
Chart 9 Number of local offices by country/territory where the parent company was located, 2018



母公司所在的國家／地區 (只顯示首5位)  
Country/Territory where the parent company was located (Only the top 5 are shown)

## 4. Local offices

### Overview

4.1 The Survey enumerated, as at the reference date of 1 June 2018, 4 799 LOs in Hong Kong with their parent companies located outside Hong Kong. The corresponding number as at 1 June 2017 was 4 473. (Table 1.1)

### Country/Territory where the parent company was located

4.2 Analysed by the country/territory where the parent company was located, **the mainland of China** had the largest number of LOs in Hong Kong (1 139 companies), followed by **Japan** (728), **the United States of America** (627), **the United Kingdom** (356) and **Singapore** (275). (Chart 9 and Table 4.1)



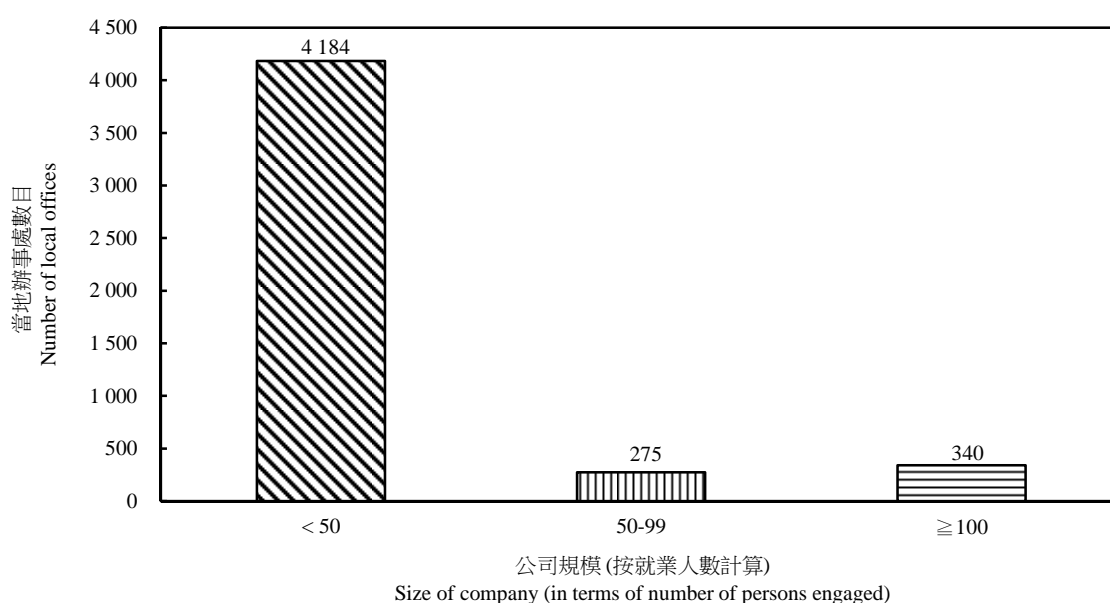
## 公司規模 (按就業人數計算)

4.3 這4 799間當地辦事處的總就業人數約為201 000人，平均每間的就業人數約為42人。約87%的當地辦事處每間的就業人數少於50人，而餘下13%的較大規模當地辦事處的就業人數則佔駐港當地辦事處的總就業人數的82%。(圖10及表4.2)

## Size of company (in terms of employment)

4.3 The total number of persons engaged by the 4 799 LOs was about 201 000, with each LO engaging around 42 persons on average. While some 87% of the LOs engaged less than 50 persons each, the remaining 13%, being larger LOs, accounted for 82% of the total number of persons engaged by the LOs in Hong Kong. (Chart 10 and Table 4.2)

圖 10 2018 年按公司規模劃分的當地辦事處數目  
Chart 10 Number of local offices by size of company, 2018



## 主要業務範圍

4.4 按在香港的主要業務範圍分析，1 907間當地辦事處從事進出口貿易、批發及零售業，其次是金融及銀行業 (1 218間)；專業、商用及教育服務業 (651)；運輸、倉庫及速遞服務業 (322)；資訊科技服務業 (220)；以及建造業 (121)。(圖11及表4.3)

## Major line of business

4.4 Analysed by the major line of business in Hong Kong, 1 907 LOs were engaged in **import/export trade, wholesale and retail**. This was followed by **financing and banking** (1 218 companies); **professional, business and education services** (651); **transportation, storage and courier services** (322); **information technology services** (220); and **construction** (121). (Chart 11 and Table 4.3)

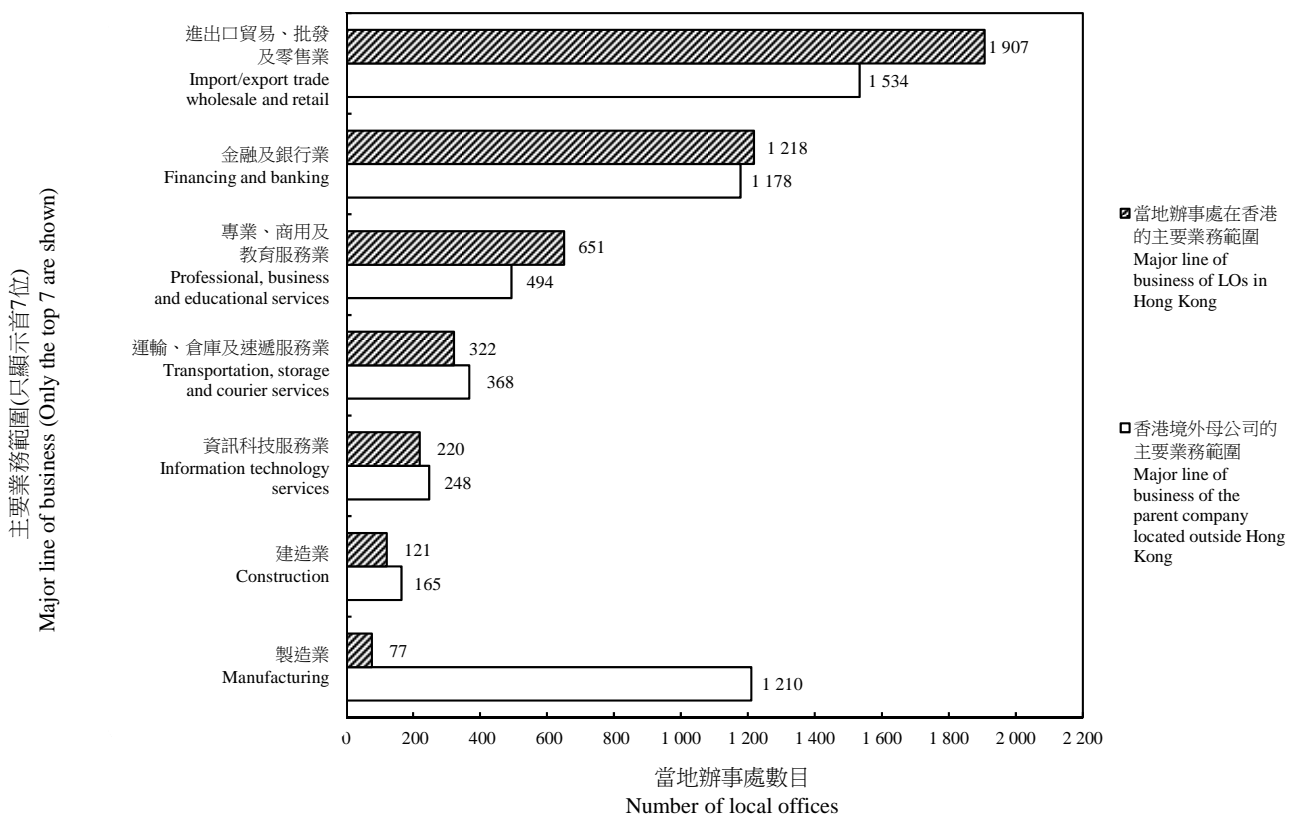
4.5 至於香港境外母公司的主要業務範圍，1 534間當地辦事處表示其母公司從事**進出口貿易、批發及零售業**。母公司所從事的其他主要業務範圍包括**製造業** (1 210間)；**金融及銀行業** (1 178)；**專業、商用及教育服務業** (494)；**運輸、倉庫及速遞服務業** (368)；**資訊科技服務業** (248)；以及**建造業**(165)。(圖11及表4.4)

4.6 一般而言，當地辦事處的主要業務範圍通常與其母公司的主要業務範圍屬同一類別。但值得注意的是，母公司從事**製造業**的當地辦事處數目 (1 210)，遠超於本身在香港的主要業務範圍為**製造業**的當地辦事處數目 (77)。這主要是由於有不少從事**進出口貿易、批發及零售業**的駐港當地辦事處，實際上負責為其境外母公司製造的產品提供銷售及相關服務。(圖11)

4.5 On the major line of business of the parent companies located outside Hong Kong, 1 534 LOs reported that their parent companies were engaged in **import/export trade, wholesale and retail**. Other major lines of business of the parent companies included **manufacturing** (1 210 companies); **financing and banking** (1 178); **professional, business and education services** (494); **transportation, storage and courier services** (368); **information technology services** (248); and **construction** (165). (Chart 11 and Table 4.4)

4.6 Generally speaking, the major line of business of an LO was usually in the same category as that of its parent company. But it should be noted that the number of LOs with parent companies engaged in **manufacturing** (1 210) far exceeded the number of LOs with their own major line of business in Hong Kong being manufacturing (77). This was mainly because quite a number of LOs which were engaged in **import/export trade, wholesale and retail** in Hong Kong were in fact responsible for providing sales and related services for products manufactured by their parent companies outside Hong Kong. (Chart 11)

圖 11 2018 年按主要業務範圍劃分的當地辦事處數目  
Chart 11 Number of local offices by major line of business, 2018



## 5. 地區總部／地區辦事處／當地辦事處的意見

### 以香港作為設立地區總部／地區辦事處／當地辦事處地點的吸引力

5.1 就這項統計調查向被抽選的地區總部／地區辦事處／當地辦事處所發出的問卷內，列出了15項可能影響他們選擇設立地區總部／地區辦事處／當地辦事處地點的因素。這些因素包括有關地點的基本設施、營商成本，以及地理位置等。被抽選的公司（見上文1.13段）須評定每項因素對其選擇設立地區總部／地區辦事處／當地辦事處地點的重要程度，及其認為香港就有關因素的有利程度。

5.2 在15項指定的因素中，**簡單稅制及低稅率**獲評為選擇設立地區總部／地區辦事處／當地辦事處地點的最重要因素。其他重要因素，按其重要性由高至低排列，包括**資訊的自由流通性；廉潔的政府；員工的生產力；以及法治及司法獨立性**。事實上，上述的各重要因素分別獲50%至67%的地區總部／地區辦事處／當地辦事處評為香港的有利因素。（圖12及表5.1）

## 5. Views of regional headquarters/ regional offices/local offices

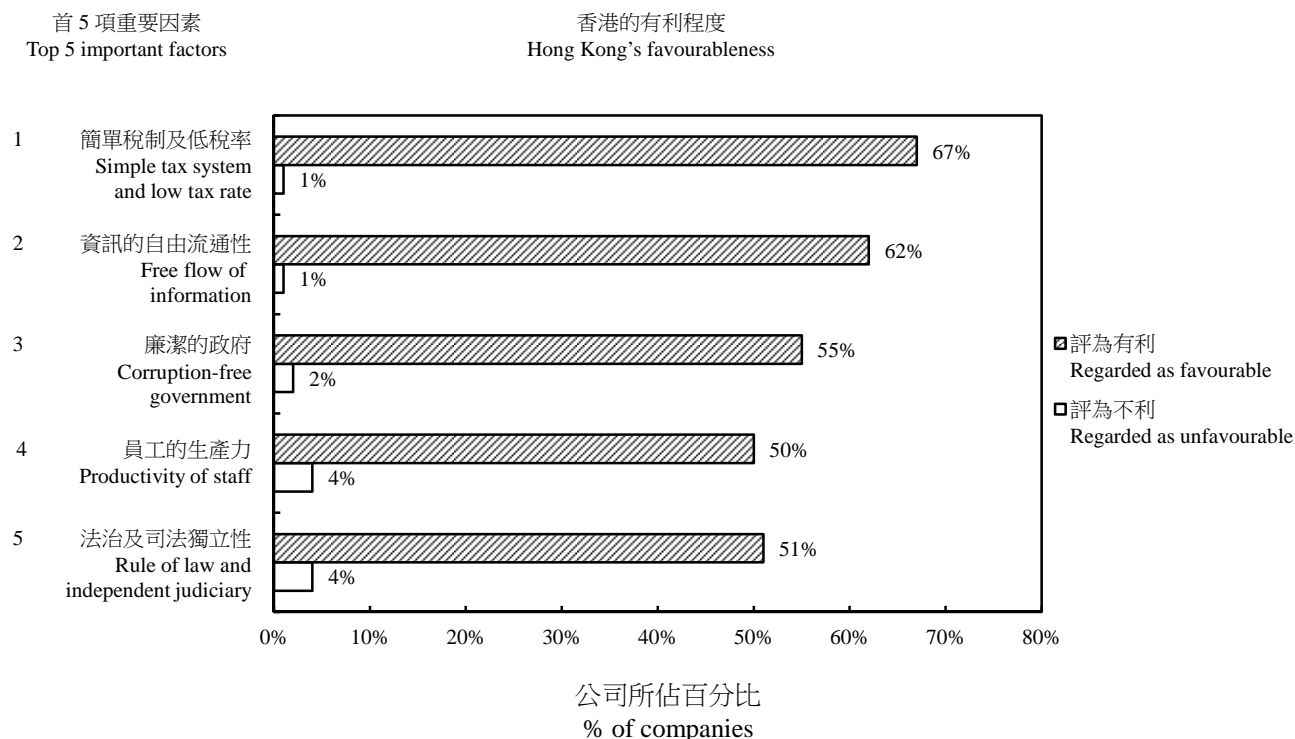
### Attractiveness of Hong Kong as a location for setting up regional headquarters/ regional offices/local offices

5.1 In the questionnaires issued to the selected RHQs/ROs/LOs, a list of 15 factors that might influence their choice of a location for setting up RHQs/ROs/LOs was provided. The factors included a location's infrastructure, cost of business operation, geographical location, etc. Selected companies (see paragraph 1.13) were asked to rate the importance of each factor to their choice of a location for setting up RHQs/ROs/LOs, and their perception of Hong Kong's favourableness in respect of the factor concerned.

5.2 Among the 15 specified factors, **simple tax system and low tax rate** was considered to be the most important factor for the choice of a location for setting up RHQs/ROs/LOs. Other important factors, in descending order of importance, included **free flow of information; corruption-free government; productivity of staff; and rule of law and independent judiciary**. In fact, each of the important factors mentioned above was rated respectively by 50% to 67% of the RHQs/ROs/LOs to be favourable factors for Hong Kong. (Chart 12 and Table 5.1)

圖 12 2018 年有關選擇設立地區總部／地區辦事處／當地辦事處地點的因素的重要程度及香港就這些因素的有利程度的意見

Chart 12 Views on the importance of factors affecting the choice of a location for setting up regional headquarters/regional offices/local offices and Hong Kong's favourableness in respect of these factors, 2018



5.3 大部分 (67%) 的地區總部／地區辦事處／當地辦事處認為**簡單稅制及低稅率**是香港的有利因素。按香港獲評的有利程度由高至低排列的其他有利因素，包括**資訊的自由流通性** (62%)；**自由港地位** (59%)；以及**地理位置** (59%)。(表5.1)

5.3 **Simple tax system and low tax rate** was regarded by the majority of the RHQs/ROs/LOs (67%) as a favourable factor for Hong Kong. Other favourable factors, in descending order of Hong Kong's favourableness rating, included **free flow of information** (62%); **free port status** (59%); and **geographical location** (59%). (Table 5.1)

5.4 另一方面，分別有43%及40%受訪的地區總部／地區辦事處／當地辦事處表示**居所的供應及費用**與**工商業樓宇的供應及費用**是香港的不利因素，但亦有11%及14%的公司分別認為居所的供應及費用與工商業樓宇的供應及費用是香港的有利因素。(表5.1)

5.4 On the other hand, 43% and 40% respectively of the RHQs/ROs/LOs surveyed expressed that the **availability and cost of residential accommodation** and **availability and cost of business accommodation** were unfavourable factors for Hong Kong, while 11% and 14% of them respectively regarded the availability and cost of residential accommodation and availability and cost of business accommodation as favourable factors. (Table 5.1)

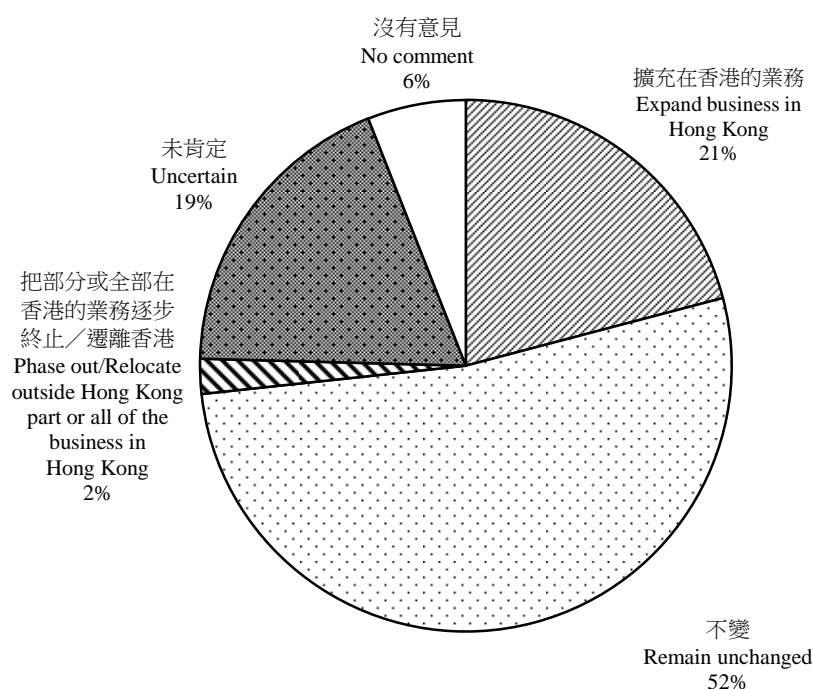
## 未來三年內的業務計劃

5.5 受訪公司亦被問及在未來三年內有關香港的業務計劃。52%受訪的地區總部／地區辦事處／當地辦事處表示其在港的業務計劃於未來三年內維持不變，而21%表示計劃擴充在港業務。此外，19%則表示未能肯定其業務計劃，但2%的公司則計劃把部分或全部在香港的業務逐步終止或遷離香港。(圖13及表5.2)

## Business plans in the coming three years

5.5 Respondents were also asked about their business plans in Hong Kong in the coming three years. 52% of the RHQs/ROs/LOs surveyed indicated that their business plans in Hong Kong would remain unchanged in the coming three years, while 21% indicated that they planned to expand their business in Hong Kong. Separately, 19% were uncertain about their business plans, but 2% planned to phase out/relocate outside Hong Kong part or all of their business in Hong Kong. (Chart 13 and Table 5.2)

**圖 13** 2018 年地區總部／地區辦事處／當地辦事處於未來三年內在香港的業務計劃  
**Chart 13** Business plans in Hong Kong in the coming three years of regional headquarters/regional offices/local offices, 2018



5.6 在該些有計劃擴充業務的公司中，73%的公司表示會增聘員工，而分別有48%及36%的公司表示會擴大現有商業功能的範疇及發展新的商業功能。

5.6 Amongst those companies which planned to expand their business, 73% indicated that they would recruit more staff, whereas 48% and 36% would expand their scope of existing business functions and develop new business functions respectively.

5.7 有計劃擴充業務的公司的平均每間公司就業人數為82人，而計劃把在港業務逐步終止或遷離香港的公司的平均每間公司就業人數為14人。

### 地區總部／地區辦事處／當地辦事處所提出香港特別行政區政府應關注的具體事項

5.8 在受訪的地區總部／地區辦事處／當地辦事處中，8%就有關境外公司來港投資的課題提出希望香港特別行政區政府應關注的事項。這些公司提出的主要事項包括**員工及租金成本**（有39%的公司提出）、**政府的支援**（12%）及**政治問題**（8%）。(表5.3)

### 對投資推廣署的認識

5.9 受訪公司亦被問及在這項統計調查之前，有否從其他途徑而對投資推廣署已有所聞。50%受訪的地區總部／地區辦事處／當地辦事處表示之前對投資推廣署已有所聞，而最普遍的途徑是傳播媒介（佔該些公司的62%）。另一方面，44%的公司表示之前對投資推廣署未有所聞。(表5.4)

5.7 Companies which planned to expand their business had engaged 82 persons per company on average, whereas those which planned to phase out/relocate outside Hong Kong had engaged 14 persons per company on average.

### Specific issues which regional headquarters/regional offices/local offices had raised for the attention of the Hong Kong Special Administrative Region Government

5.8 8% of the RHQs/ROs/LOs surveyed had raised specific issues relating to foreign investment in Hong Kong that they wanted to bring to the attention of the Hong Kong Special Administrative Region Government. Major issues raised by these companies included **staff and rental costs** (raised by 39% of these companies), **government support** (12%) and **political problems** (8%). (Table 5.3)

### Knowledge about Invest Hong Kong

5.9 Respondents were also asked whether they had heard of Invest Hong Kong through other channels prior to this Survey. 50% of the RHQs/ROs/LOs surveyed indicated that they had heard of Invest Hong Kong before, and the most common channel was from media (accounting for 62% of those companies). On the other hand, 44% of the companies indicated that they had not heard of Invest Hong Kong before. (Table 5.4)

**表 1.1 2014 年至 2018 年地區總部、地區辦事處及當地辦事處數目**  
**Table 1.1 Number of regional headquarters, regional offices and local offices, 2014 to 2018**

	公司數目 Number of companies				
	2014	2015	2016	2017	2018
地區總部 Regional headquarters	1 389	1 401	1 379	1 413	1 530
地區辦事處 Regional offices	2 395	2 397	2 352	2 339	2 425
當地辦事處 Local offices	3 801	4 106	4 255	4 473	4 799
<b>總計 Total</b>	<b>7 585</b>	<b>7 904</b>	<b>7 986</b>	<b>8 225</b>	<b>8 754</b>

**表 1.2 2014 年至 2018 年就業於地區總部、地區辦事處及當地辦事處的人數**  
**Table 1.2 Number of persons engaged by regional headquarters, regional offices and local offices, 2014 to 2018**

	就業人數 <sup>#</sup>				
	Number of persons engaged <sup>#</sup>				
	2014	2015	2016	2017	2018
地區總部 Regional headquarters	154 000	163 000	164 000	172 000	196 000
地區辦事處 Regional offices	93 000	94 000	93 000	86 000	88 000
當地辦事處 Local offices	158 000	165 000	178 000	185 000	201 000
<b>總計 Total</b>	<b>405 000</b>	<b>422 000</b>	<b>435 000</b>	<b>443 000</b>	<b>485 000</b>

註釋：# 數字是四捨五入至最接近的千位數。

Note：# Figures are rounded to the nearest thousand.



**表 1.3 2014 年至 2018 年按母公司所在的選定國家／地區劃分的地區總部／地區辦事處／當地辦事處總數**

**Table 1.3 Total number of regional headquarters/regional offices/local offices by selected country/territory where the parent company was located, 2014 to 2018**

母公司所在的 國家／地區 Country/Territory where the parent company was located	公司數目 Number of companies									
	2014		2015		2016		2017		2018	
中國內地 The mainland of China	957	(12.6%)	1 091	(13.8%)	1 123	(14.1%)	1 264	(15.4%)	1 591	(18.2%)
日本 Japan	1 388	(18.3%)	1 358	(17.2%)	1 376	(17.2%)	1 378	(16.8%)	1 393	(15.9%)
美國 United States of America	1 331	(17.5%)	1 368	(17.3%)	1 353	(16.9%)	1 313	(16.0%)	1 351	(15.4%)
英國 United Kingdom	584	(7.7%)	631	(8.0%)	656	(8.2%)	675	(8.2%)	712	(8.1%)
新加坡 Singapore	343	(4.5%)	357	(4.5%)	382	(4.8%)	408	(5.0%)	427	(4.9%)
德國 Germany	335	(4.4%)	340	(4.3%)	357	(4.5%)	382	(4.6%)	396	(4.5%)
法國 France	311	(4.1%)	315	(4.0%)	334	(4.2%)	343	(4.2%)	373	(4.3%)
台灣 Taiwan	426	(5.6%)	413	(5.2%)	387	(4.8%)	381	(4.6%)	371	(4.2%)
瑞士 Switzerland	242	(3.2%)	252	(3.2%)	244	(3.1%)	238	(2.9%)	235	(2.7%)
荷蘭 Netherlands	187	(2.5%)	190	(2.4%)	190	(2.4%)	178	(2.2%)	180	(2.1%)
澳大利亞 Australia	173	(2.3%)	182	(2.3%)	179	(2.2%)	174	(2.1%)	172	(2.0%)
意大利 Italy	152	(2.0%)	159	(2.0%)	160	(2.0%)	160	(1.9%)	164	(1.9%)
韓國 Korea	136	(1.8%)	144	(1.8%)	135	(1.7%)	148	(1.8%)	145	(1.7%)
加拿大 Canada	97	(1.3%)	110	(1.4%)	110	(1.4%)	106	(1.3%)	113	(1.3%)
瑞典 Sweden	84	(1.1%)	92	(1.2%)	91	(1.1%)	90	(1.1%)	95	(1.1%)

註釋：如地區總部／地區辦事處／當地辦事處屬聯營機構，其母公司所在的國家／地區可多於一個。括號內的數字指在地區總部／地區辦事處／當地辦事處總計中所佔的百分比。

Notes: In the case of a joint-venture regional headquarters/regional office/local office, there may be more than one country/territory where its parent companies are located. Figures in brackets denote the percentages in respect of the total number of regional headquarters/regional offices/local offices.

**表 1.4 2018 年按公司規模劃分的地區總部／地區辦事處／當地辦事處總數及就業人數**

**Table 1.4 Total number of regional headquarters/regional offices/local offices and number of persons engaged by size of company, 2018**

公司規模 (按就業人數計算) Size of company (in terms of number of persons engaged)	公司數目 Number of companies		就業人數 <sup>#</sup> Number of persons engaged <sup>#</sup>	
< 20	6 172	(70.5%)	33 000	(6.8%)
20 - 49	1 255	(14.3%)	38 000	(7.8%)
50 - 99	584	(6.7%)	40 000	(8.3%)
100 - 199	370	(4.2%)	50 000	(10.2%)
200 - 499	226	(2.6%)	68 000	(14.1%)
500 - 999	83	(0.9%)	57 000	(11.8%)
1 000 +	64	(0.7%)	198 000	(40.9%)
<b>總計 Total</b>	<b>8 754</b>	<b>(100.0%)</b>	<b>485 000</b>	<b>(100.0%)</b>

註釋：# 有關就業人數的數字是四捨五入至最接近的千位數，而相應的百分比是由未經四捨五入的數字計算出來。

Note：# Figures on persons engaged are rounded to the nearest thousand and the corresponding percentages are derived from unrounded figures.

**表 1.5 2018 年按在香港的主要業務範圍劃分的地區總部／地區辦事處／當地辦事處總數**

**Table 1.5 Total number of regional headquarters/regional offices/local offices by major line of business in Hong Kong, 2018**

在香港的主要業務範圍 Major line of business in Hong Kong	公司數目 Number of companies	
進出口貿易、批發及零售業 Import/export trade, wholesale and retail	3 950	(45.1%)
金融及銀行業 Financing and banking	1 806	(20.6%)
專業、商用及教育服務業 Professional, business and education services	1 262	(14.4%)
運輸、倉庫及速遞服務業 Transportation, storage and courier services	604	(6.9%)
資訊科技服務業 Information technology services	405	(4.6%)
建造業 Construction	193	(2.2%)
製造業 Manufacturing	172	(2.0%)
出版、傳播媒介及多媒體活動 <sup>#</sup> Publishing, media and multi-media activities <sup>#</sup>	172	(2.0%)
保險業 Insurance	160	(1.8%)
地產業 Real estate	138	(1.6%)
電訊業 Telecommunications	105	(1.2%)
食肆及酒店業 Restaurants and hotels	96	(1.1%)
人類保健活動 <sup>@</sup> 及自然科學的研究及發展 Human health activities <sup>@</sup> and research and development on natural sciences	96	(1.1%)
創作、表演藝術及專門設計活動 Creative, performing arts and specialised design activities	62	(0.7%)

註釋：地區總部／地區辦事處／當地辦事處可從事多於一項主要業務範圍。

括號內的數字指在地區總部／地區辦事處／當地辦事處總計（8 754 間）中所佔的百分比。

<sup>#</sup> 包括出版活動；電影、錄像及電視節目製作活動、錄音及音樂出版活動；以及節目編製及廣播活動。

<sup>@</sup> 包括保健及醫療服務。

Notes: A regional headquarters/regional office/local office may be engaged in more than one major line of business.

Figures in brackets denote the percentages in respect of the total number of regional headquarters/regional offices/local offices (8 754 companies).

<sup>#</sup> Including publishing activities; motion picture, video and television programme production, sound recording and music publishing activities; and programming and broadcasting activities.

<sup>@</sup> Including healthcare and medical services.

**表 1.6 2018 年按母公司的主要業務範圍劃分的地區總部／地區辦事處／當地辦事處總數**

**Table 1.6 Total number of regional headquarters/regional offices/local offices by major line of business of the parent company, 2018**

母公司的主要業務範圍 Major line of business of the parent company	公司數目 Number of companies	
進出口貿易、批發及零售業 Import/export trade, wholesale and retail	3 129	(35.7%)
製造業 Manufacturing	2 529	(28.9%)
金融及銀行業 Financing and banking	1 788	(20.4%)
專業、商用及教育服務業 Professional, business and education services	957	(10.9%)
運輸、倉庫及速遞服務業 Transportation, storage and courier services	662	(7.6%)
資訊科技服務業 Information technology services	457	(5.2%)
建造業 Construction	267	(3.1%)
保險業 Insurance	222	(2.5%)
地產業 Real estate	207	(2.4%)
出版、傳播媒介及多媒體活動 <sup>#</sup> Publishing, media and multi-media activities <sup>#</sup>	191	(2.2%)
食肆及酒店業 Restaurants and hotels	163	(1.9%)
人類保健活動 <sup>@</sup> 及自然科學的研究及發展 Human health activities <sup>@</sup> and research and development on natural sciences	153	(1.7%)
電訊業 Telecommunications	124	(1.4%)
創作、表演藝術及專門設計活動 Creative, performing arts and specialised design activities	75	(0.9%)

註釋：地區總部／地區辦事處／當地辦事處可能有多於一間母公司。此外，每間母公司可從事多於一項主要業務範圍。括號內的數字指在地區總部／地區辦事處／當地辦事處總計（8 754 間）中所佔的百分比。  
# 包括出版活動；電影、錄像及電視節目製作活動、錄音及音樂出版活動；以及節目編製及廣播活動。  
@ 包括保健及醫療服務。

Notes: A regional headquarters/regional office/local office may have more than one parent company. Besides, each parent company may be engaged in more than one major line of business. Figures in brackets denote the percentages in respect of the total number of regional headquarters/regional offices/local offices (8 754 companies).  
# Including publishing activities; motion picture, video and television programme production, sound recording and music publishing activities; and programming and broadcasting activities.  
@ Including healthcare and medical services.

**表 2.1 2014 年至 2018 年按母公司所在的選定國家／地區劃分的地區總部數目**

**Table 2.1 Number of regional headquarters by selected country/territory where the parent company was located, 2014 to 2018**

母公司所在的 國家／地區 Country/Territory where the parent company was located	地區總部數目 Number of regional headquarters									
	2014		2015		2016		2017		2018	
美國 United States of America	310	(22.3%)	307	(21.9%)	286	(20.7%)	283	(20.0%)	290	(19.0%)
日本 Japan	240	(17.3%)	238	(17.0%)	239	(17.3%)	233	(16.5%)	244	(15.9%)
中國內地 The mainland of China	119	(8.6%)	133	(9.5%)	137	(9.9%)	154	(10.9%)	197	(12.9%)
英國 United Kingdom	120	(8.6%)	126	(9.0%)	124	(9.0%)	122	(8.6%)	137	(9.0%)
德國 Germany	91	(6.6%)	87	(6.2%)	85	(6.2%)	87	(6.2%)	98	(6.4%)
法國 France	68	(4.9%)	67	(4.8%)	73	(5.3%)	81	(5.7%)	92	(6.0%)
瑞士 Switzerland	45	(3.2%)	43	(3.1%)	51	(3.7%)	55	(3.9%)	54	(3.5%)
新加坡 Singapore	43	(3.1%)	42	(3.0%)	40	(2.9%)	45	(3.2%)	46	(3.0%)
意大利 Italy	43	(3.1%)	40	(2.9%)	36	(2.6%)	39	(2.8%)	39	(2.5%)
澳大利亞 Australia	37	(2.7%)	40	(2.9%)	37	(2.7%)	35	(2.5%)	35	(2.3%)
瑞典 Sweden	28	(2.0%)	28	(2.0%)	30	(2.2%)	27	(1.9%)	29	(1.9%)
荷蘭 Netherlands	43	(3.1%)	36	(2.6%)	29	(2.1%)	27	(1.9%)	28	(1.8%)
台灣 Taiwan	31	(2.2%)	26	(1.9%)	25	(1.8%)	19	(1.3%)	22	(1.4%)
加拿大 Canada	16	(1.2%)	18	(1.3%)	17	(1.2%)	19	(1.3%)	21	(1.4%)
比利時 Belgium	14	(1.0%)	18	(1.3%)	20	(1.5%)	21	(1.5%)	21	(1.4%)

註釋：如地區總部屬聯營機構，其母公司所在的國家／地區可多於一個。  
括號內的數字指在地區總部總計中所佔的百分比。

Notes : In the case of a joint-venture regional headquarters, there may be more than one country/territory where its parent companies are located.  
Figures in brackets denote the percentages in respect of the total number of regional headquarters.

**表 2.2 2018 年按公司規模劃分的地區總部數目及就業人數**  
**Table 2.2 Number of regional headquarters and number of persons engaged by size of company, 2018**

公司規模 (按就業人數計算) Size of company (in terms of number of persons engaged)	地區總部數目 Number of regional headquarters		就業人數 <sup>#</sup> Number of persons engaged <sup>#</sup>	
< 20	847	(55.4%)	6 000	(3.1%)
20 - 49	292	(19.1%)	9 000	(4.6%)
50 - 99	163	(10.7%)	11 000	(5.8%)
100 - 199	106	(6.9%)	14 000	(7.3%)
200 - 499	68	(4.4%)	21 000	(11.0%)
500 - 999	25	(1.6%)	16 000	(8.1%)
1 000 +	29	(1.9%)	118 000	(60.2%)
<b>總計 Total</b>	<b>1 530</b>	<b>(100.0%)</b>	<b>196 000</b>	<b>(100.0%)</b>

註釋：# 有關就業人數的數字是四捨五入至最接近的千位數，而相應的百分比是由未經四捨五入的數字計算出來。

Note：# Figures on persons engaged are rounded to the nearest thousand and the corresponding percentages are derived from unrounded figures.

**表 2.3 2018 年按在香港的主要業務範圍劃分的地區總部數目**  
**Table 2.3 Number of regional headquarters by major line of business in Hong Kong, 2018**

在香港的主要業務範圍 Major line of business in Hong Kong	地區總部數目 Number of regional headquarters	
進出口貿易、批發及零售業 Import/export trade, wholesale and retail	760	(49.7%)
金融及銀行業 Financing and banking	262	(17.1%)
專業、商用及教育服務業 Professional, business and education services	225	(14.7%)
運輸、倉庫及速遞服務業 Transportation, storage and courier services	116	(7.6%)
資訊科技服務業 Information technology services	75	(4.9%)
製造業 Manufacturing	46	(3.0%)
出版、傳播媒介及多媒體活動 <sup>#</sup> Publishing, media and multi-media activities <sup>#</sup>	36	(2.4%)
建造業 Construction	32	(2.1%)
電訊業 Telecommunications	24	(1.6%)
保險業 Insurance	22	(1.4%)
地產業 Real estate	19	(1.2%)
人類保健活動 <sup>@</sup> 及自然科學的研究及發展 Human health activities <sup>@</sup> and research and development on natural sciences	14	(0.9%)
食肆及酒店業 Restaurants and hotels	11	(0.7%)
創作、表演藝術及專門設計活動 Creative, performing arts and specialised design activities	8	(0.5%)

註釋：地區總部可從事多於一項主要業務範圍。

括號內的數字指在地區總部總計（1 530 間）中所佔的百分比。

<sup>#</sup> 包括出版活動；電影、錄像及電視節目製作活動、錄音及音樂出版活動；以及節目編製及廣播活動。

<sup>@</sup> 包括保健及醫療服務。

Notes: A regional headquarters may be engaged in more than one major line of business.

Figures in brackets denote the percentages in respect of the total number of regional headquarters (1 530 companies).

<sup>#</sup> Including publishing activities; motion picture, video and television programme production, sound recording and music publishing activities; and programming and broadcasting activities.

<sup>@</sup> Including healthcare and medical services.

**表 2.4 2018 年按母公司的主要業務範圍劃分的地區總部數目**  
**Table 2.4 Number of regional headquarters by major line of business of the parent company, 2018**

母公司的主要業務範圍 Major line of business of the parent company	地區總部數目 Number of regional headquarters	
進出口貿易、批發及零售業 Import/export trade, wholesale and retail	597	(39.0%)
製造業 Manufacturing	489	(32.0%)
金融及銀行業 Financing and banking	272	(17.8%)
專業、商用及教育服務業 Professional, business and education services	162	(10.6%)
運輸、倉庫及速遞服務業 Transportation, storage and courier services	110	(7.2%)
資訊科技服務業 Information technology services	88	(5.8%)
出版、傳播媒介及多媒體活動 <sup>#</sup> Publishing, media and multi-media activities <sup>#</sup>	43	(2.8%)
建造業 Construction	42	(2.7%)
地產業 Real estate	34	(2.2%)
保險業 Insurance	33	(2.2%)
人類保健活動 <sup>@</sup> 及自然科學的研究及發展 Human health activities <sup>@</sup> and research and development on natural sciences	26	(1.7%)
電訊業 Telecommunications	26	(1.7%)
食肆及酒店業 Restaurants and hotels	16	(1.0%)
創作、表演藝術及專門設計活動 Creative, performing arts and specialised design activities	13	(0.8%)

註釋：地區總部可能有多於一間母公司。此外，每間母公司可從事多於一項主要業務範圍。

括號內的數字指在地區總部總計（1 530 間）中所佔的百分比。

<sup>#</sup> 包括出版活動；電影、錄像及電視節目製作活動、錄音及音樂出版活動；以及節目編製及廣播活動。

<sup>@</sup> 包括保健及醫療服務。

Notes: A regional headquarters may have more than one parent company. Besides, each parent company may be engaged in more than one major line of business.

Figures in brackets denote the percentages in respect of the total number of regional headquarters (1 530 companies).

<sup>#</sup> Including publishing activities; motion picture, video and television programme production, sound recording and music publishing activities; and programming and broadcasting activities.

<sup>@</sup> Including healthcare and medical services.



**表 2.5 2014 年至 2018 年按區內選定地域責任 (香港除外) 劃分的地區總部數目**

**Table 2.5 Number of regional headquarters by selected geographical responsibility in the region (other than Hong Kong), 2014 to 2018**

區內地域責任 (香港除外) Geographical responsibility in the region (other than Hong Kong)	地區總部數目 Number of regional headquarters									
	2014		2015		2016		2017		2018	
中國內地 The mainland of China	1 138	(81.9%)	1 137	(81.2%)	1 121	(81.3%)	1 116	(79.0%)	1 162	(75.9%)
— 僅廣東省 Guangdong Province only	356	(25.6%)	358	(25.6%)	343	(24.9%)	301	(21.3%)	342	(22.4%)
— 僅廣東省以外地區 Places other than Guangdong Province only	319	(23.0%)	347	(24.8%)	338	(24.5%)	345	(24.4%)	349	(22.8%)
— 廣東省及其他地區 Guangdong Province and other places	463	(33.3%)	432	(30.8%)	440	(31.9%)	470	(33.3%)	471	(30.8%)
新加坡 Singapore	460	(33.1%)	447	(31.9%)	442	(32.1%)	453	(32.1%)	487	(31.8%)
台灣 Taiwan	427	(30.7%)	413	(29.5%)	400	(29.0%)	422	(29.9%)	429	(28.0%)
韓國 Korea	319	(23.0%)	314	(22.4%)	304	(22.0%)	311	(22.0%)	345	(22.5%)
日本 Japan	310	(22.3%)	310	(22.1%)	309	(22.4%)	317	(22.4%)	335	(21.9%)
馬來西亞 Malaysia	296	(21.3%)	287	(20.5%)	276	(20.0%)	282	(20.0%)	296	(19.3%)
澳門 Macao	217	(15.6%)	211	(15.1%)	225	(16.3%)	264	(18.7%)	292	(19.1%)
泰國 Thailand	292	(21.0%)	281	(20.1%)	269	(19.5%)	280	(19.8%)	291	(19.0%)
越南 Vietnam	237	(17.1%)	230	(16.4%)	236	(17.1%)	252	(17.8%)	279	(18.2%)
印度 India	276	(19.9%)	281	(20.1%)	269	(19.5%)	270	(19.1%)	269	(17.6%)
印度尼西亞 Indonesia	253	(18.2%)	238	(17.0%)	241	(17.5%)	245	(17.3%)	257	(16.8%)
菲律賓 Philippines	226	(16.3%)	214	(15.3%)	211	(15.3%)	230	(16.3%)	237	(15.5%)
澳大利亞 Australia	201	(14.5%)	199	(14.2%)	181	(13.1%)	200	(14.2%)	206	(13.5%)

註釋：地區總部可能負責多於一個地方的業務／運作。  
括號內的數字指在地區總部總計中所佔的百分比。

Notes: A regional headquarters may be responsible for the business/operations in more than one place.  
Figures in brackets denote the percentages in respect of the total number of regional headquarters.

**表 3.1 2014 年至 2018 年按母公司所在的選定國家／地區劃分的地區辦事處數目**

**Table 3.1 Number of regional offices by selected country/territory where the parent company was located, 2014 to 2018**

母公司所在的 國家／地區 Country/Territory where the parent company was located	地區辦事處數目 Number of regional offices									
	2014		2015		2016		2017		2018	
美國 United States of America	490	(20.5%)	505	(21.1%)	480	(20.4%)	443	(18.9%)	434	(17.9%)
日本 Japan	465	(19.4%)	447	(18.6%)	420	(17.9%)	428	(18.3%)	421	(17.4%)
中國內地 The mainland of China	160	(6.7%)	186	(7.8%)	174	(7.4%)	196	(8.4%)	255	(10.5%)
英國 United Kingdom	204	(8.5%)	220	(9.2%)	223	(9.5%)	221	(9.4%)	219	(9.0%)
德國 Germany	125	(5.2%)	121	(5.0%)	131	(5.6%)	140	(6.0%)	139	(5.7%)
法國 France	110	(4.6%)	105	(4.4%)	109	(4.6%)	101	(4.3%)	119	(4.9%)
新加坡 Singapore	90	(3.8%)	93	(3.9%)	102	(4.3%)	106	(4.5%)	106	(4.4%)
台灣 Taiwan	144	(6.0%)	122	(5.1%)	115	(4.9%)	109	(4.7%)	97	(4.0%)
瑞士 Switzerland	84	(3.5%)	82	(3.4%)	80	(3.4%)	84	(3.6%)	83	(3.4%)
意大利 Italy	61	(2.5%)	61	(2.5%)	64	(2.7%)	54	(2.3%)	62	(2.6%)
荷蘭 Netherlands	65	(2.7%)	62	(2.6%)	63	(2.7%)	56	(2.4%)	52	(2.1%)
澳大利亞 Australia	47	(2.0%)	48	(2.0%)	54	(2.3%)	48	(2.1%)	50	(2.1%)
韓國 Korea	40	(1.7%)	44	(1.8%)	41	(1.7%)	47	(2.0%)	47	(1.9%)
加拿大 Canada	29	(1.2%)	31	(1.3%)	32	(1.4%)	30	(1.3%)	33	(1.4%)
瑞典 Sweden	28	(1.2%)	28	(1.2%)	29	(1.2%)	29	(1.2%)	30	(1.2%)

註釋：如地區辦事處屬聯營機構，其母公司所在的國家／地區可多於一個。  
括號內的數字指在地區辦事處總計中所佔的百分比。

Notes: In the case of a joint-venture regional office, there may be more than one country/territory where its parent companies are located.  
Figures in brackets denote the percentages in respect of the total number of regional offices.

**表 3.2 2018 年按公司規模劃分的地區辦事處數目及就業人數**  
**Table 3.2 Number of regional offices and number of persons engaged by size of company, 2018**

公司規模 (按就業人數計算) Size of company (in terms of number of persons engaged)	地區辦事處數目 Number of regional offices		就業人數 <sup>#</sup> Number of persons engaged <sup>#</sup>	
< 20	1 740	(71.8%)	10 000	(10.9%)
20 - 49	364	(15.0%)	11 000	(12.4%)
50 - 99	146	(6.0%)	10 000	(11.6%)
100 - 199	87	(3.6%)	11 000	(13.0%)
200 - 499	61	(2.5%)	18 000	(20.9%)
500 - 999	19	(0.8%)	13 000	(15.1%)
1 000 +	8	(0.3%)	14 000	(16.2%)
<b>總計 Total</b>	<b>2 425</b>	<b>(100.0%)</b>	<b>88 000</b>	<b>(100.0%)</b>

註釋：# 有關就業人數的數字是四捨五入至最接近的千位數，而相應的百分比是由未經四捨五入的數字計算出來。

Note：# Figures on persons engaged are rounded to the nearest thousand and the corresponding percentages are derived from unrounded figures.

**表 3.3 2018 年按在香港的主要業務範圍劃分的地區辦事處數目**  
**Table 3.3 Number of regional offices by major line of business in Hong Kong, 2018**

在香港的主要業務範圍 Major line of business in Hong Kong	地區辦事處數目 Number of regional offices	
進出口貿易、批發及零售業 Import/export trade, wholesale and retail	1 283	(52.9%)
專業、商用及教育服務業 Professional, business and education services	386	(15.9%)
金融及銀行業 Financing and banking	326	(13.4%)
運輸、倉庫及速遞服務業 Transportation, storage and courier services	166	(6.8%)
資訊科技服務業 Information technology services	110	(4.5%)
製造業 Manufacturing	49	(2.0%)
出版、傳播媒介及多媒體活動 <sup>#</sup> Publishing, media and multi-media activities <sup>#</sup>	48	(2.0%)
保險業 Insurance	45	(1.9%)
建造業 Construction	40	(1.6%)
電訊業 Telecommunications	28	(1.2%)
創作、表演藝術及專門設計活動 Creative, performing arts and specialised design activities	27	(1.1%)
人類保健活動 <sup>@</sup> 及自然科學的研究及發展 Human health activities <sup>@</sup> and research and development on natural sciences	23	(0.9%)
地產業 Real estate	22	(0.9%)
食肆及酒店業 Restaurants and hotels	20	(0.8%)

註釋：地區辦事處可從事多於一項主要業務範圍。  
 括號內的數字指在地區辦事處總計 (2 425 間) 中所佔的百分比。  
<sup>#</sup> 包括出版活動；電影、錄像及電視節目製作活動、錄音及音樂出版活動；以及節目編製及廣播活動。  
<sup>@</sup> 包括保健及醫療服務。

Notes: A regional office may be engaged in more than one major line of business.  
 Figures in brackets denote the percentages in respect of the total number of regional offices (2 425 companies).  
<sup>#</sup> Including publishing activities; motion picture, video and television programme production, sound recording and music publishing activities; and programming and broadcasting activities.  
<sup>@</sup> Including healthcare and medical services.

**表 3.4 2018 年按母公司的主要業務範圍劃分的地區辦事處數目**  
**Table 3.4 Number of regional offices by major line of business of the parent company, 2018**

母公司的主要業務範圍 Major line of business of the parent company	地區辦事處數目 Number of regional offices	
進出口貿易、批發及零售業 Import/export trade, wholesale and retail	998	(41.2%)
製造業 Manufacturing	830	(34.2%)
金融及銀行業 Financing and banking	338	(13.9%)
專業、商用及教育服務業 Professional, business and education services	301	(12.4%)
運輸、倉庫及速遞服務業 Transportation, storage and courier services	184	(7.6%)
資訊科技服務業 Information technology services	121	(5.0%)
建造業 Construction	60	(2.5%)
保險業 Insurance	55	(2.3%)
出版、傳播媒介及多媒體活動 <sup>#</sup> Publishing, media and multi-media activities <sup>#</sup>	47	(1.9%)
地產業 Real estate	38	(1.6%)
電訊業 Telecommunications	36	(1.5%)
食肆及酒店業 Restaurants and hotels	33	(1.4%)
創作、表演藝術及專門設計活動 Creative, performing arts and specialised design activities	32	(1.3%)
人類保健活動 <sup>@</sup> 及自然科學的研究及發展 Human health activities <sup>@</sup> and research and development on natural sciences	31	(1.3%)

註釋：地區辦事處可能有多於一間母公司。此外，每間母公司可從事多於一項主要業務範圍。

括號內的數字指在地區辦事處總計（2 425 間）中所佔的百分比。

<sup>#</sup> 包括出版活動；電影、錄像及電視節目製作活動、錄音及音樂出版活動；以及節目編製及廣播活動。

<sup>@</sup> 包括保健及醫療服務。

Notes: A regional office may have more than one parent company. Besides, each parent company may be engaged in more than one major line of business.

Figures in brackets denote the percentages in respect of the total number of regional offices (2 425 companies).

<sup>#</sup> Including publishing activities; motion picture, video and television programme production, sound recording and music publishing activities; and programming and broadcasting activities.

<sup>@</sup> Including healthcare and medical services.

**表 3.5 2014 年至 2018 年按區內選定地域責任（香港除外）劃分的地區辦事處數目**

**Table 3.5 Number of regional offices by selected geographical responsibility in the region (other than Hong Kong), 2014 to 2018**

區內地域責任（香港除外） Geographical responsibility in the region (other than Hong Kong)	地區辦事處數目 Number of regional offices									
	2014		2015		2016		2017		2018	
中國內地 The mainland of China	1 855	(77.5%)	1 800	(75.1%)	1 750	(74.4%)	1 741	(74.4%)	1 740	(71.8%)
— 僅廣東省 Guangdong Province only	649	(27.1%)	649	(27.1%)	639	(27.2%)	630	(26.9%)	602	(24.8%)
— 僅廣東省以外地區 Places other than Guangdong Province only	484	(20.2%)	493	(20.6%)	482	(20.5%)	475	(20.3%)	469	(19.3%)
— 廣東省及其他地區 Guangdong Province and other places	722	(30.1%)	658	(27.5%)	629	(26.7%)	636	(27.2%)	669	(27.6%)
新加坡 Singapore	646	(27.0%)	634	(26.4%)	661	(28.1%)	645	(27.6%)	647	(26.7%)
台灣 Taiwan	663	(27.7%)	635	(26.5%)	643	(27.3%)	617	(26.4%)	631	(26.0%)
日本 Japan	479	(20.0%)	473	(19.7%)	500	(21.3%)	486	(20.8%)	489	(20.2%)
韓國 Korea	484	(20.2%)	460	(19.2%)	483	(20.5%)	445	(19.0%)	445	(18.4%)
泰國 Thailand	420	(17.5%)	405	(16.9%)	432	(18.4%)	409	(17.5%)	405	(16.7%)
澳門 Macao	384	(16.0%)	363	(15.1%)	376	(16.0%)	342	(14.6%)	390	(16.1%)
馬來西亞 Malaysia	425	(17.7%)	416	(17.4%)	424	(18.0%)	393	(16.8%)	390	(16.1%)
越南 Vietnam	376	(15.7%)	372	(15.5%)	393	(16.7%)	364	(15.6%)	374	(15.4%)
菲律賓 Philippines	353	(14.7%)	340	(14.2%)	349	(14.8%)	327	(14.0%)	340	(14.0%)
印度 India	323	(13.5%)	334	(13.9%)	353	(15.0%)	323	(13.8%)	329	(13.6%)
印度尼西亞 Indonesia	335	(14.0%)	321	(13.4%)	339	(14.4%)	319	(13.6%)	327	(13.5%)
澳大利亞 Australia	272	(11.4%)	257	(10.7%)	249	(10.6%)	264	(11.3%)	253	(10.4%)

註釋：地區辦事處可能負責多於一個地方的業務／運作。  
括號內的數字指在地區辦事處總計中所佔的百分比。

Notes: A regional office may be responsible for the business/operations in more than one place.  
Figures in brackets denote the percentages in respect of the total number of regional offices.

**表 4.1 2014 年至 2018 年按母公司所在的選定國家／地區劃分的當地辦事處數目**

**Table 4.1 Number of local offices by selected country/territory where the parent company was located, 2014 to 2018**

母公司所在的 國家／地區 Country/Territory where the parent company was located	當地辦事處數目 Number of local offices									
	2014		2015		2016		2017		2018	
中國內地 The mainland of China	678	(17.8%)	772	(18.8%)	812	(19.1%)	914	(20.4%)	1 139	(23.7%)
日本 Japan	683	(18.0%)	673	(16.4%)	717	(16.9%)	717	(16.0%)	728	(15.2%)
美國 United States of America	531	(14.0%)	556	(13.5%)	587	(13.8%)	587	(13.1%)	627	(13.1%)
英國 United Kingdom	260	(6.8%)	285	(6.9%)	309	(7.3%)	332	(7.4%)	356	(7.4%)
新加坡 Singapore	210	(5.5%)	222	(5.4%)	240	(5.6%)	257	(5.7%)	275	(5.7%)
台灣 Taiwan	251	(6.6%)	265	(6.5%)	247	(5.8%)	253	(5.7%)	252	(5.3%)
法國 France	133	(3.5%)	143	(3.5%)	152	(3.6%)	161	(3.6%)	162	(3.4%)
德國 Germany	119	(3.1%)	132	(3.2%)	141	(3.3%)	155	(3.5%)	159	(3.3%)
荷蘭 Netherlands	79	(2.1%)	92	(2.2%)	98	(2.3%)	95	(2.1%)	100	(2.1%)
瑞士 Switzerland	113	(3.0%)	127	(3.1%)	113	(2.7%)	99	(2.2%)	98	(2.0%)
韓國 Korea	83	(2.2%)	86	(2.1%)	82	(1.9%)	94	(2.1%)	90	(1.9%)
澳大利亞 Australia	89	(2.3%)	94	(2.3%)	88	(2.1%)	91	(2.0%)	87	(1.8%)
意大利 Italy	48	(1.3%)	58	(1.4%)	60	(1.4%)	67	(1.5%)	63	(1.3%)
加拿大 Canada	52	(1.4%)	61	(1.5%)	61	(1.4%)	57	(1.3%)	59	(1.2%)
馬來西亞 Malaysia	35	(0.9%)	35	(0.9%)	38	(0.9%)	52	(1.2%)	43	(0.9%)

註釋：如當地辦事處屬聯營機構，其母公司所在的國家／地區可多於一個。  
括號內的數字指在當地辦事處總計中所佔的百分比。

Notes: In the case of a joint-venture local office, there may be more than one country/territory where its parent companies are located.  
Figures in brackets denote the percentages in respect of the total number of local offices.

**表 4.2 2018 年按公司規模劃分的當地辦事處數目及就業人數**  
**Table 4.2 Number of local offices and number of persons engaged by size of company, 2018**

公司規模 (按就業人數計算) Size of company (in terms of number of persons engaged)	當地辦事處數目 Number of local offices		就業人數 <sup>#</sup> Number of persons engaged <sup>#</sup>	
< 20	3 585	(74.7%)	17 000	(8.6%)
20 - 49	599	(12.5%)	18 000	(8.9%)
50 - 99	275	(5.7%)	19 000	(9.3%)
100 - 199	177	(3.7%)	24 000	(11.9%)
200 - 499	97	(2.0%)	29 000	(14.2%)
500 - 999	39	(0.8%)	28 000	(13.9%)
1 000 +	27	(0.6%)	67 000	(33.1%)
<b>總計 Total</b>	<b>4 799</b>	<b>(100.0%)</b>	<b>201 000</b>	<b>(100.0%)</b>

註釋：# 有關就業人數的數字是四捨五入至最接近的千位數，而相應的百分比是由未經四捨五入的數字計算出來。

Note：# Figures on persons engaged are rounded to the nearest thousand and the corresponding percentages are derived from unrounded figures.



**表 4.3 2018 年按在香港的主要業務範圍劃分的當地辦事處數目**  
**Table 4.3 Number of local offices by major line of business in Hong Kong, 2018**

在香港的主要業務範圍 Major line of business in Hong Kong	當地辦事處數目 Number of local offices	
進出口貿易、批發及零售業 Import/export trade, wholesale and retail	1 907	(39.7%)
金融及銀行業 Financing and banking	1 218	(25.4%)
專業、商用及教育服務業 Professional, business and education services	651	(13.6%)
運輸、倉庫及速遞服務業 Transportation, storage and courier services	322	(6.7%)
資訊科技服務業 Information technology services	220	(4.6%)
建造業 Construction	121	(2.5%)
地產業 Real estate	97	(2.0%)
保險業 Insurance	93	(1.9%)
出版、傳播媒介及多媒體活動 <sup>#</sup> Publishing, media and multi-media activities <sup>#</sup>	88	(1.8%)
製造業 Manufacturing	77	(1.6%)
食肆及酒店業 Restaurants and hotels	65	(1.4%)
人類保健活動 <sup>@</sup> 及自然科學的研究及發展 Human health activities <sup>@</sup> and research and development on natural sciences	59	(1.2%)
電訊業 Telecommunications	53	(1.1%)
創作、表演藝術及專門設計活動 Creative, performing arts and specialised design activities	27	(0.6%)

註釋： 當地辦事處可從事多於一項主要業務範圍。  
 括號內的數字指在當地辦事處總計（4 799 間）中所佔的百分比。  
<sup>#</sup> 包括出版活動；電影、錄像及電視節目製作活動、錄音及音樂出版活動；以及節目編製及廣播活動。  
<sup>@</sup> 包括保健及醫療服務。

Notes : A local office may be engaged in more than one major line of business.  
 Figures in brackets denote the percentages in respect of the total number of local offices (4 799 companies).  
<sup>#</sup> Including publishing activities; motion picture, video and television programme production, sound recording and music publishing activities; and programming and broadcasting activities.  
<sup>@</sup> Including healthcare and medical services.

**表 4.4 2018 年按母公司的主要業務範圍劃分的當地辦事處數目**  
**Table 4.4 Number of local offices by major line of business of the parent company, 2018**

母公司的主要業務範圍 Major line of business of the parent company	當地辦事處數目 Number of local offices	
進出口貿易、批發及零售業 Import/export trade, wholesale and retail	1 534	(32.0%)
製造業 Manufacturing	1 210	(25.2%)
金融及銀行業 Financing and banking	1 178	(24.5%)
專業、商用及教育服務業 Professional, business and education services	494	(10.3%)
運輸、倉庫及速遞服務業 Transportation, storage and courier services	368	(7.7%)
資訊科技服務業 Information technology services	248	(5.2%)
建造業 Construction	165	(3.4%)
地產業 Real estate	135	(2.8%)
保險業 Insurance	134	(2.8%)
食肆及酒店業 Restaurants and hotels	114	(2.4%)
出版、傳播媒介及多媒體活動 <sup>#</sup> Publishing, media and multi-media activities <sup>#</sup>	101	(2.1%)
人類保健活動 <sup>@</sup> 及自然科學的研究及發展 Human health activities <sup>@</sup> and research and development on natural sciences	96	(2.0%)
電訊業 Telecommunications	62	(1.3%)
創作、表演藝術及專門設計活動 Creative, performing arts and specialised design activities	30	(0.6%)

註釋： 當地辦事處可能有多於一間母公司。此外，每間母公司可從事多於一項主要業務範圍。

括號內的數字指在當地辦事處總計（4 799 間）中所佔的百分比。

<sup>#</sup> 包括出版活動；電影、錄像及電視節目製作活動、錄音及音樂出版活動；以及節目編製及廣播活動。

<sup>@</sup> 包括保健及醫療服務。

Notes : A local office may have more than one parent company. Besides, each parent company may be engaged in more than one major line of business.

Figures in brackets denote the percentages in respect of the total number of local offices (4 799 companies).

<sup>#</sup> Including publishing activities; motion picture, video and television programme production, sound recording and music publishing activities; and programming and broadcasting activities.

<sup>@</sup> Including healthcare and medical services.

**表 5.1 2018年有關選擇設立地區總部／地區辦事處／當地辦事處地點的因素的重要程度及香港就這些因素的有利程度的意見**

**Table 5.1 Views on the importance of factors affecting the choice of a location for setting up regional headquarters/regional offices/local offices and Hong Kong's favourableness in respect of these factors, 2018**

因素 Factor	重要性次序 # Ranking of importance #	香港的有利程度 Hong Kong's favourableness			
		有利 Favourable	中立 Neutral	不利 Unfavourable	沒有意見 No comment
		(公司所佔百分比) (% of companies)			
簡單稅制及低稅率 Simple tax system and low tax rate	1	67%	21%	1%	11%
資訊的自由流通性 Free flow of information	2	62%	26%	1%	11%
廉潔的政府 Corruption-free government	3	55%	32%	2%	11%
員工的生產力 Productivity of staff	4	50%	35%	4%	11%
法治及司法獨立性 Rule of law and independent judiciary	5	51%	35%	4%	11%
自由港地位 Free port status	6	59%	29%	1%	11%
政治穩定及安全性 Political stability and security	7	44%	40%	5%	11%
地理位置 Geographical location	8	59%	29%	1%	11%
員工的供應及成本 Availability and cost of staff	9	28%	46%	16%	11%
通訊、運輸及其他基本設施 Communication, transport and other infrastructure	10	54%	32%	3%	11%
工商業樓宇的供應及費用 Availability and cost of business accommodation	11	14%	36%	40%	11%
中國內地的商機 Business opportunity in the mainland of China	12	52%	35%	3%	11%
環境的素質 Environmental quality	13	31%	48%	11%	11%
居所的供應及費用 Availability and cost of residential accommodation	14	11%	35%	43%	11%
國際學校學位的供應 Availability of international school places	15	18%	61%	9%	11%

註釋：# 每間作出回應的公司須就上述 15 項因素的重要性評分，而每項因素的整體次序是根據公司的評分計算得來。

Notes: # Each responded company was asked to rate the importance of the above 15 factors and such information was then used to produce an overall ranking for each factor.

**表 5.2 2014 年至2018 年地區總部／地區辦事處／當地辦事處於未來三年內  
在香港的業務計劃**

**Table 5.2 Business plans in Hong Kong in the coming three years of regional  
headquarters/regional offices/local offices, 2014 to 2018**

於未來三年內在香港的業務計劃 Business plans in Hong Kong in the coming three years	公司所佔百分比 % of companies				
	2014	2015	2016	2017	2018
擴充在香港的業務 Expand business in Hong Kong	21%	18%	17%	20%	21%
不變 Remain unchanged	45%	46%	57%	57%	52%
把部分或全部在香港的業務 逐步終止／遷離香港 Phase out/Relocate outside Hong Kong part or all of the business in Hong Kong	3%	3%	3%	3%	2%
未肯定 Uncertain	22%	23%	19%	16%	19%
沒有意見 No comment	8%	10%	5%	4%	6%

**表 5.3 2014 年至 2018 年地區總部／地區辦事處／當地辦事處所提出香港特別行政區政府應關注的具體事項**

**Table 5.3 Specific issues which regional headquarters/regional offices/local offices had raised for the attention of the Hong Kong Special Administrative Region Government, 2014 to 2018**

有否提出具體事項 Whether had raised specific issues	公司所佔百分比 % of companies				
	2014	2015	2016	2017	2018
有提出具體事項 Having raised specific issues	10%	9%	7%	8%	8%
<i>所提出的具體事項</i> <i>Specific issues raised</i>					
員工及租金成本 <i>Staff and rental costs</i>	(38%)	(40%)	(36%)	(32%)	(39%)
政府的支援 <i>Government support</i>	(19%)	(19%)	(20%)	(21%)	(12%)
政治問題 <i>Political problems</i>	(18%)	(17%)	(15%)	(9%)	(8%)
其他 <i>Others</i>	(52%)	(47%)	(53%)	(58%)	(58%)
沒有意見 No comment	90%	91%	93%	92%	92%

註釋：地區總部／地區辦事處／當地辦事處可能提出多於一項具體事項。  
括號內的數字指有提出具體事項公司中所佔的百分比。

Notes: A regional headquarters/regional office/local office may raise more than one specific issue.  
Figures in brackets denote the percentages in respect of the companies having raised specific issues.

**表 5.4 2014 年至 2018 年地區總部／地區辦事處／當地辦事處對投資推廣署的認識**

**Table 5.4 Knowledge of regional headquarters/regional offices/local offices about Invest Hong Kong, 2014 to 2018**

對投資推廣署的認識 Knowledge about Invest Hong Kong	公司所佔百分比 % of companies				
	2014	2015	2016	2017	2018
有所聞 Heard before	57%	57%	57%	56%	50%
未有所聞 Not heard before	36%	35%	38%	40%	44%
沒有意見 No comment	6%	8%	5%	4%	6%

## 獲取政府統計處刊物的方法 Means of Obtaining Publications of the Census and Statistics Department

### 網站

用戶可以在政府統計處網站 ([www.censtatd.gov.hk/hkstat/quicklink/index\\_tc.jsp](http://www.censtatd.gov.hk/hkstat/quicklink/index_tc.jsp)) 免費下載統計刊物。

### 政府統計處刊物出版組

政府統計處有少數特刊備有印刷版，市民可親臨政府統計處刊物出版組購買。有關備有印刷版的特刊資料，市民可瀏覽政府新聞處的政府書店網站 ([www.bookstore.gov.hk](http://www.bookstore.gov.hk)) 或聯絡政府統計處刊物出版組。

政府統計處刊物出版組亦設有閱讀區，陳列政府統計處各類刊物的最新期號，供讀者查閱。

刊物出版組的地址是：  
香港灣仔港灣道 12 號  
灣仔政府大樓 19 樓  
電話：(852) 2582 3025  
圖文傳真：(852) 2827 1708

### 訂購服務

政府統計處有少數特刊備有印刷版，於政府新聞處的政府書店網站 ([www.bookstore.gov.hk](http://www.bookstore.gov.hk)) 有售。市民亦可在政府統計處網站 ([www.censtatd.gov.hk/service\\_desk/list/mail/index\\_tc.jsp](http://www.censtatd.gov.hk/service_desk/list/mail/index_tc.jsp)) 下載郵購表格，並將填妥的郵購表格，連同所需費用的支票或匯票寄回辦理。

### Website

Users may download statistical publications free of charge from the Census and Statistics Department (C&SD) website ([www.censtatd.gov.hk/hkstat/quicklink/index.jsp](http://www.censtatd.gov.hk/hkstat/quicklink/index.jsp)).

### Publications Unit of C&SD

A few ad hoc publications of C&SD are available in print versions. These print versions are available for purchase at the Publications Unit of C&SD. Regarding the details of the ad hoc publications with print versions, users may browse through the Government Bookstore of the Information Services Department ([www.bookstore.gov.hk](http://www.bookstore.gov.hk)) or contact the Publications Unit of C&SD.

The Publications Unit of C&SD also provides a reading area where users may browse through the latest issue of various publications of the department on display.

The address of the Publications Unit is :  
19/F, Wanchai Tower,  
12 Harbour Road, Wan Chai, Hong Kong.  
Tel. : (852) 2582 3025  
Fax : (852) 2827 1708

### Order service

A few ad hoc publications of C&SD are available in print versions and are offered for sale online at the Government Bookstore of the Information Services Department ([www.bookstore.gov.hk](http://www.bookstore.gov.hk)). A mail order form for ordering print versions of publications is also available for downloading on the website of the department ([www.censtatd.gov.hk/service\\_desk/list/mail/index.jsp](http://www.censtatd.gov.hk/service_desk/list/mail/index.jsp)). Completed form should be sent back together with a cheque or bank draft covering all necessary cost.